



Field Installation Lamps-Out Indicator Signature Series Sign

Document No. ALN115

Issued: April 22, 2005
Rev. A: April 22, 2005

ADB Airfield Solutions

P.O. Box 30829
977 Gahanna Parkway
Columbus, OH 43230

Tel: (614) 861-1304
Fax: (614) 864-2069

Copyright © 2005 by ADB Airfield Solutions, LLC All rights reserved.

ADB Airfield Solutions

*The innovative
approach™*

Filed Installation of Lamps-Out Indicator

1. Introduction

This service bulletin provides instructions to install the Lamps-out Indicator in the signature series signs.

2. Special Tools and Equipment Required

Refer to Tables 1 and 2 for the tools and equipment required to install light base beveled spacer rings. Retrofit kit provides all necessary parts to install one Lamps-Out Indicator.

Table 1 Required Equipment Supplied

Description	Part Number	Quantity
Service Bulletin	ALN115	1
Retrofit Kit	94A0373	AR

Table 2. Required Equipment Not Supplied

Description	Part Number	Quantity
7/8 dia drill bit or hole saw	N/A	1
9/64 dia drill bit	N/A	3
Drill, electric or air	N/A	1
Wire Ties	N/A	AR

WARNING: Read and understand the following instructions before attempting to order and installing the arrestor assembly into the field circuit.



WARNING: Danger High Voltage. Disconnect sign from power source. Failure to observe this warning may result in personal injury, death, or equipment damage.

3. Installation Instructions

Field installation of the lamps out indicator requires that the sign lid(s) be removed to have access to the inside of the sign. The kit has two indicator lights. One or both of the indicator lights can be installed. One lamp assembly has a short wiring harness used when the indicator lamp is mounted near the active ballast board. The second indicator lamp assembly as a long wiring harness so that the lamp can be mounted at the far end of the sign. When the lamps out indicator lamps are factory installed both lamps are mounted so that airport maintenance can decide which end of the sign will be used to view the lamps- out indicator. It may not be necessary to mount both lights when the lamps out option is added in the field.

NOTE: As noted in sign manual 96A0286, Section 3, Optional Lamps-Out Indicator Mounting, only one of the lamps-out indicators can be operational at a time. When installing these devices in the field, consult with airport maintenance to determine which end of the sign (the active ballast end or at the far end) the indicator should be installed.

1. Drill holes for the indicator and the flasher PCB, as shown on the Flasher Kit and wiring diagram, at the end of the sign that has been selected. See Figure 1.
2. After installing the first lamps-out indicator alter the other end of the sign to install the second indicator light assembly. If it has been decided to install both indicators. See Figure 1.
3. Connect leads from the indicator to the Lamps-Out LED Flasher PCB terminal J2. Connect the flasher PCB to the main Sign Active Ballast PCB per the wiring schematic. See Figure 2.
4. Dress new indicator wiring with wire ties against the upper sign structures back to the PCB. Touch up any paint that was damaged during the drilling of the holes.

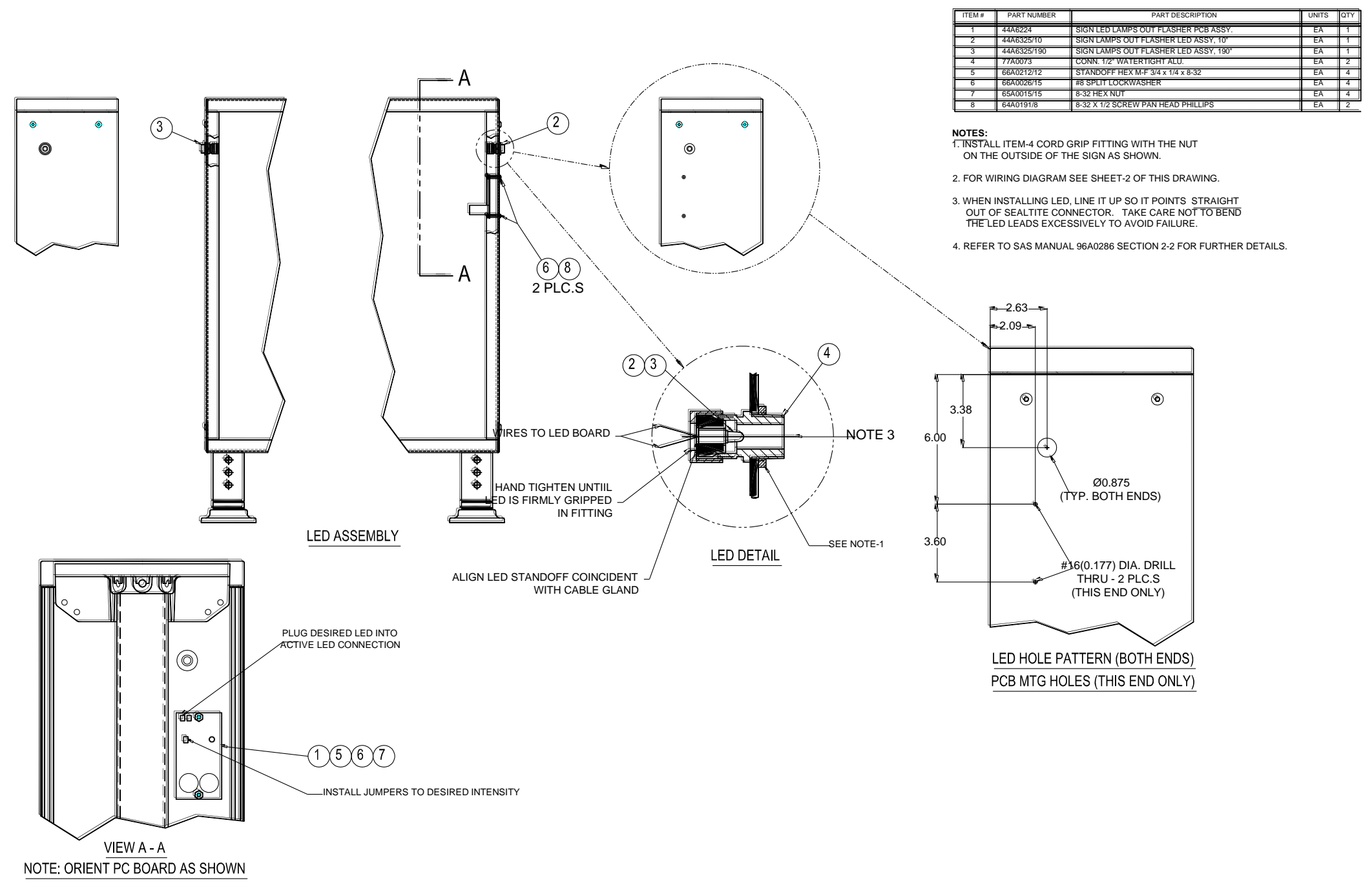


Figure 1 Lamps- Out Assembly Drilling Template and component Location Diagram

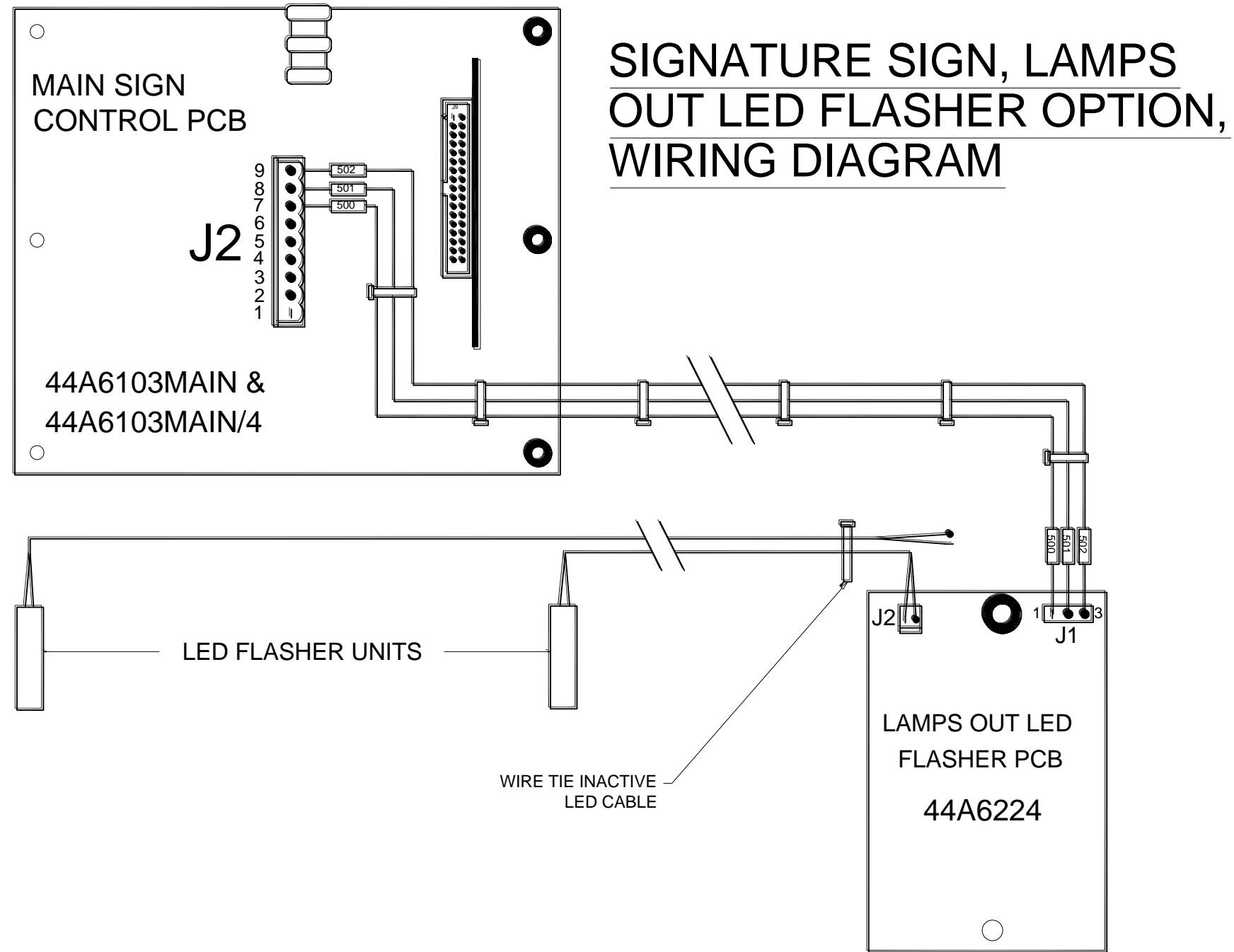


Figure 2 Lamps out Flasher Kit Wiring Diagram