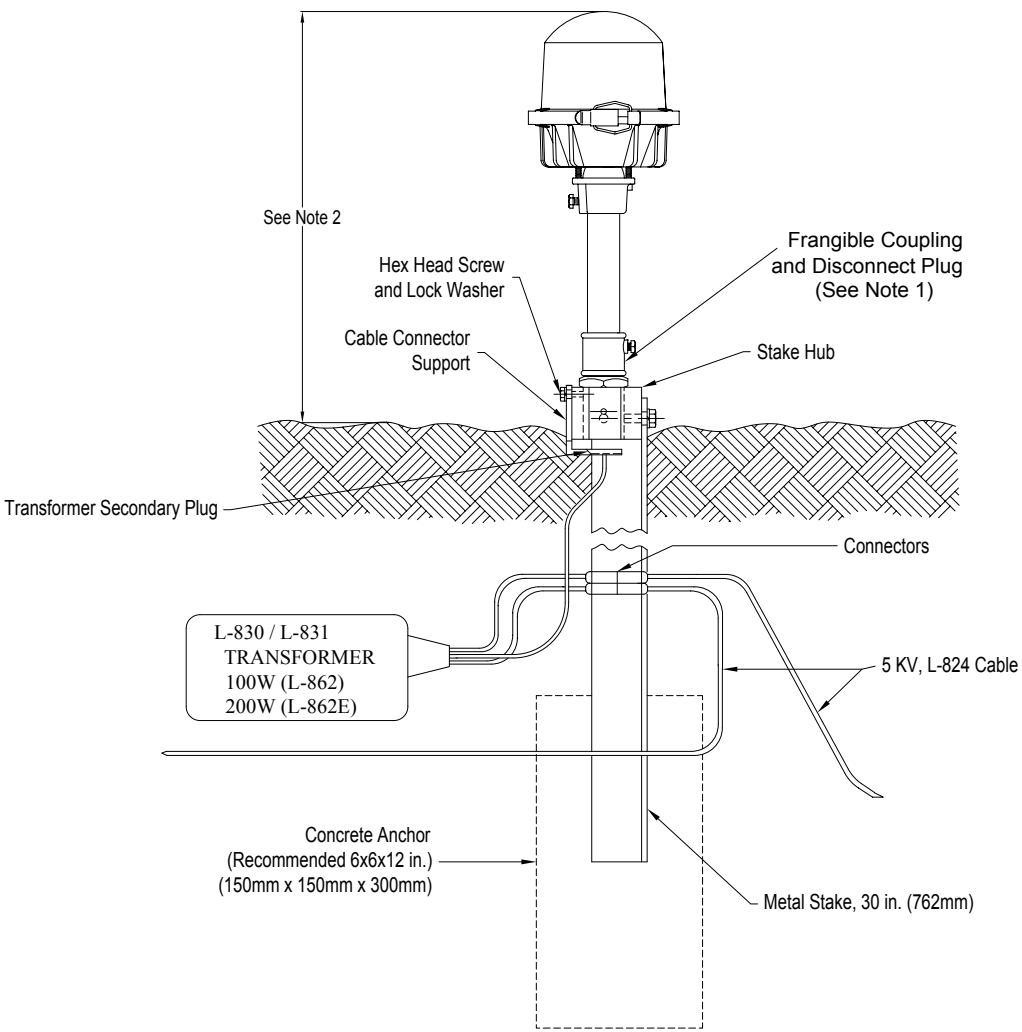


EXAMPLE OF BASE MOUNTED L-862 FIXTURE INSTALLATION
IN EXISTING SHOULDER SECTION

NOTES:

1. APPLY ANTI-SIEZE COMPOUND TO THREADS OF FRANGIBLE COUPLING WHEN INSTALLING NEW OR REPLACING EXISTING L-862 STANDARD.
2. AVAILABLE IN HEIGHTS OF 14, 24, AND 30 INCHES.
3. ADB AIRFIELD SOLUTIONS PART 44A2071/XXXX 115W & 120W QUARTZ RUNWAY AND 200W QUARTZ L862E OR EQUAL.

CAUTION:
THIS DRAWING IS ONLY INTENDED FOR USE AS GENERAL AIRFIELD SYSTEM DESIGN GUIDANCE. THE DESIGNER MUST VERIFY DESIGN WITH LOCAL CODES AND VARYING CHARACTERISTICS FOR EACH UNIQUE AIRFIELD APPLICATION.



EXAMPLE OF STAKE MOUNTED L-862 FIXTURE INSTALLATION

				CONTROLLED COPY			
				Unauthorized duplication of this document in whole or part is prohibited. Initialed in RED ink below indicates authorized copy.			
				INITIAL & DATE:			
				ADB			
				ADB Airfield Solutions P.O. Box 30829 Tel: (614) 861-1304 977 Gahanna Parkway Fax: (614) 864-2069 Columbus, OH 43230			
				DRAWING TITLE: L-862 QUARTZ/INCANDESCENT BASE AND STAKE MOUNT INSTALLATION			
C	3709	REPAIR TITLE BLOCK	DTR	14AUG12			
B	----	REPAIR TRANF NOTATIONS	DTR	24OCT06			
A	----		LWH	25MAR04			
REV	ECO	REVISION DESCRIPTION		DRAWN	REV		
LEVEL	NUMBER			BY	DATE		
ASSOCIATED DRAWINGS:		DRAWN BY: LWH		DRAWN DATE: 25MAR04			
Information contained on this drawing is to be used expressly in accord with purpose for which it was submitted. Any disclosure of this information is strictly prohibited except as ADB Airfield Solutions, Inc. may otherwise agree in writing. Copyright © 2011 ADB Airfield Solutions.							
					SCALE: N/A		SHEET NUMBER: 1 of 1
					DRAWING NUMBER: 117A0009		REV: C