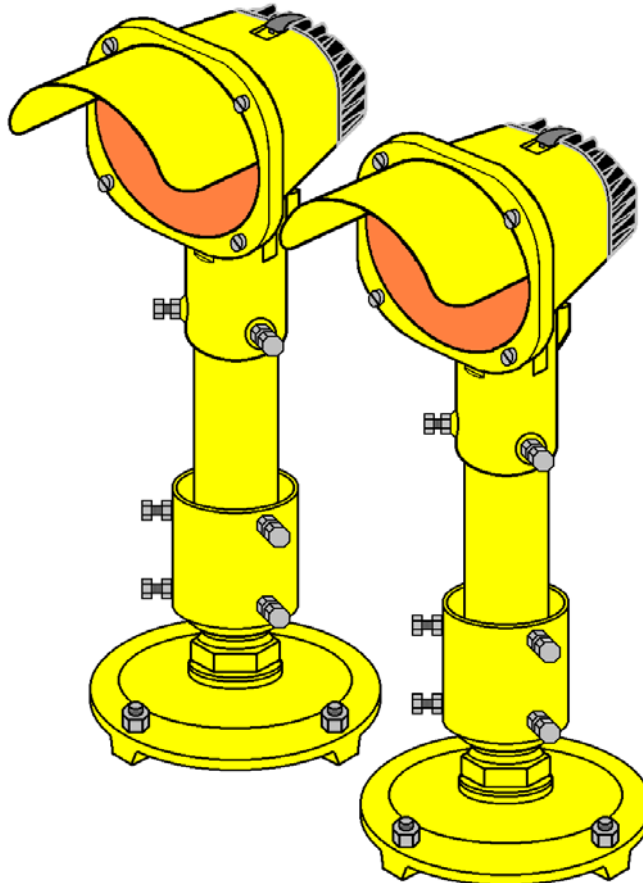


## MAINTENANCE DOCUMENTATION for EL-RGL

**DOC 3305.E**



# THORN

Airfield Lighting

[www.thornairfield.com](http://www.thornairfield.com)

**THORN EUROPHANE**  
156 bd Haussmann  
75379 Paris  
Cedex 08  
FRANCE  
Tel : +33 (0) 1 49 53 62 62  
Fax : +33 (0) 1 49 53 62 89

[thornairfield@thorn.fr](mailto:thornairfield@thorn.fr)

**Thorn DNT Airfield Lighting**  
7-9 Newcastle Road  
Bayswater Victoria 3153  
AUSTRALIA  
Tel : +61 (0) 3 97 20 32 33  
Fax : +61 (0) 3 97 20 82 33

[enquiries@thornairfield.com](mailto:enquiries@thornairfield.com)

**THORN LIGHTING**  
3 King George Close  
Eastern Avenue West  
Romford, Essex RM7 7PP  
UNITED KINGDOM  
Tel : +44 (0) 1708 776 289  
Fax : +44 (0) 1708 742 322

[airfield@thornlight.com](mailto:airfield@thornlight.com)

**THORN CLK Airfield lighting**  
19/F Jardine Engineering House  
260 King's Road  
North point – HONG KONG  
Tel : +852 (0) 2988 4128  
Fax : +852 (0) 2988 4139

[adminhk@thornclkaf.com.hk](mailto:adminhk@thornclkaf.com.hk)

**RECORD of CHANGE Documentation 3305.E**

Revision	Designation	Editor	Checked	Date
1	First issue	JMD		August 2004

## TABLE OF CONTENTS

<b>1</b>	<b>INTRODUCTION .....</b>	<b>4</b>
1.1	USE RESTRICTION NOTICE AND WARRANTY .....	4
1.1.1	Use of the Document .....	4
1.1.2	Warranty .....	4
1.2	SAFETY INSTRUCTIONS .....	5
1.3	REFERENCE DOCUMENTS .....	5
1.4	TOOLS REQUIRED.....	5
<b>2</b>	<b>GENERAL INFORMATION .....</b>	<b>6</b>
2.1	DESCRIPTION OF THE SYSTEM.....	6
2.2	DESIGN OF THE EL-ATG FITTING .....	7
2.3	DESIGN OF THE FL45-500 CONTROL BOX.....	7
<b>3</b>	<b>MAINTENANCE.....</b>	<b>8</b>
3.1	REPLACEMENT OF THE FL45-500 CONTROL BOX.....	8
3.2	MAINTENANCE OF THE EL-ATG FITTINGS.....	8

## 1 Introduction

This document lists the different steps to follow in order to successfully maintenance operations on a system of elevated fittings **EL-RGL**.

You will find in this document two main paragraphs:

"General Information and Requirements": This chapter gives general description and use of the fitting covered by this document.

"Maintenance of the Fitting" : This chapter describes how to maintain the equipment covered by this document.

### 1.1 Use restriction notice and warranty

#### 1.1.1 Use of the Document

This documentation is the property of

**THORN Airfield Lighting**  
**156 bd. Haussmann**  
**75379 Paris Cedex 08**  
**France**

This documentation or any parts of this documentation may not be reproduced, stored in a retrieval system or transmitted in any form or by any means (mechanical, photocopying, recording, electronic,...) without THORN's prior consent.

#### 1.1.2 Warranty

**THORN Airfield Lighting** guarantees that the performance of the elevated lights described in this document, when sold by THORN Airfield Lighting or its licensed representatives, meets the requirements of ICAO Annex 14 volume 1 and FAA specifications.

Any defect in design, material or workmanship, which may occur during proper and normal use over a period covered by the warranty stipulate in the contract, will be replaced by THORN Airfield Lighting free of charge, ex works.

Operational failure resulting from lamp burnt out, improper installation and damage due to airport maintenance equipment is not considered a result of proper use and is beyond the scope of the warranty.

The above constitutes the limits of THORN Airfield Lighting 's liabilities concerning the equipment covered by this document.

## 1.2 Safety instructions

**WARNING:** Prior to the commencement of work all electrical services MUST be isolated from the supply and connected to earth. Full details of the work involved must be given to the Authorise Person responsible for the electrical engineering services at the airport with regard to the duration of the work, etc.. It is recommended that prior to starting any cutting work the nature and location of services such as cable ducts, etc... should be identified. It is a prerequisite of this type of installation that the work should be carried out by trained and experienced personnel.

## 1.3 Reference documents

This paper refers to following documents:

- THORN Commercial Documentation General Brochure Doc 1001.E,
- THORN EL-RGL Commercial Documentation Doc 1305.E,
- THORN EL-AT Installation Documentation Doc 2101.E,
- THORN EL-RGL Installation Documentation Doc 2305.E,
- THORN Installation Documentation for Ground Fixations of Elevated Light Fittings Doc 2401.E,
- THORN FL45-500 Installation Documentation Doc 2509.E,
- THORN EL-AT Maintenance Documentation Doc 3101.E,
- Last Edition of ICAO Annex 14,
- Last Edition of FAA Advisory Circular AC.

## 1.4 Tools required

- Box spanners 7, 13 and 16 mm or 17 mm
- Open end spanners 10, 13 and 50
- Allen keys no.3
- Screwdrivers
- Crimping tool
- One brush or cloth
- Methylated alcohol

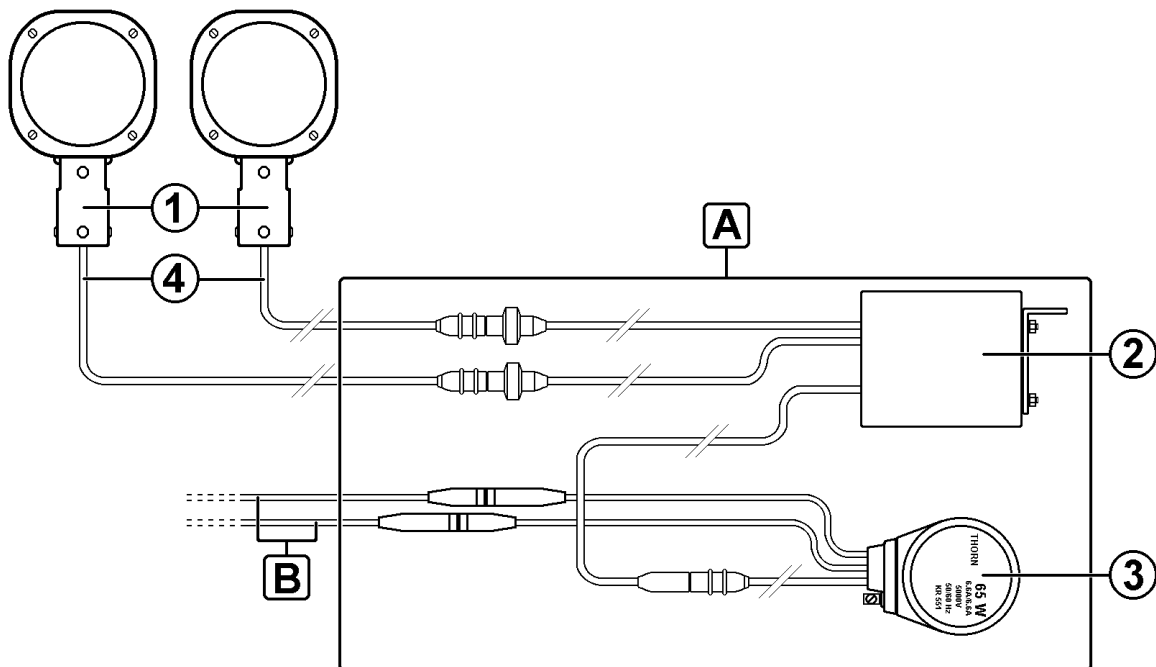
## 2 General information

### 2.1 Description of the system

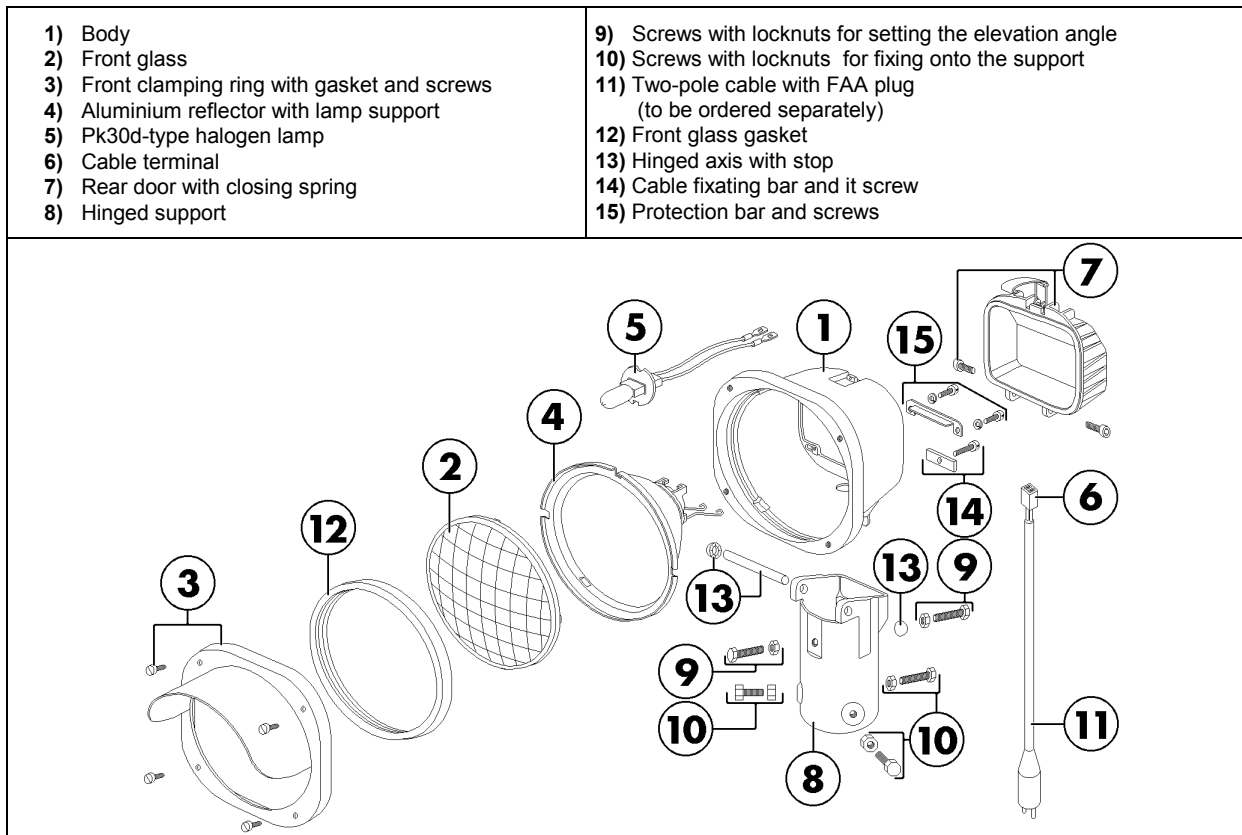
The EL-RGL System of Blinking lights comprise the following components :

- 1) Two Elevated **EL-ATG** fitting, each fitting is equipped with a 45 Watts lamp and mounted on standard supports : Tripod Stands, Conduit Elbows, Base Plate, Frangible Collar, Frangible Coupling, 60 mm Tube (See DOC 1401.F).
- 2) One FL45-500 Control Box (See DOC 1509.E).
- 3) One 65 VA Isolating Transformer (See DOC 1501.E).
- 4) Two Secondary Cables (See DOC 1511.E).

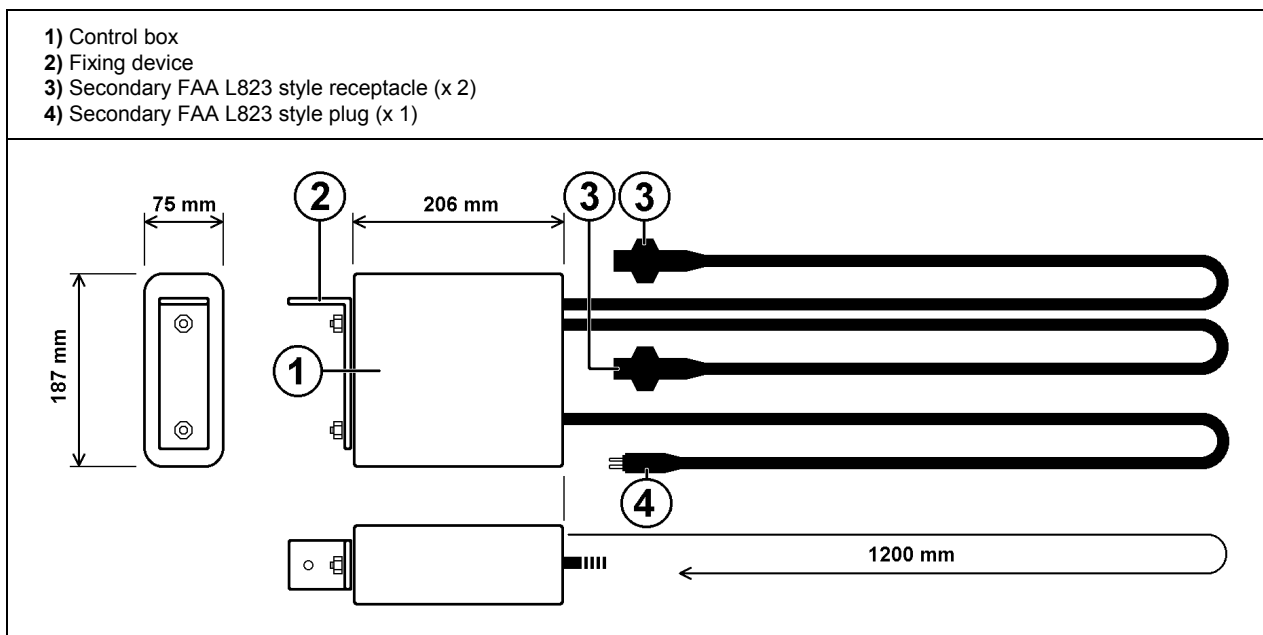
**Note :** **A)** = Manhole or Deep Base, **B)** = Primary Circuit



## 2.2 Design of the EL-ATG fitting



## 2.3 Design of the FL45-500 control box



### **3 Maintenance**

The maintenance operations possible on a EL-RGL system are :

- 1) Replacement of a defective FL45-500 control box.
- 2) all maintenance operations possible on the two EL-ATG light fittings.

#### **3.1 Replacement of the FL45-500 control box**

For the replacement of the FL45-500, please see the “Installation Documentation” for control box for runway guard lights FL45-500 Doc 2509.E

#### **3.2 Maintenance of the EL-ATG fittings**

For the maintenance of the two EL-ATG fittings, please see the “Maintenance Documentation” for EL-AT range fitting Doc 3101.E



## COMMENTS

Last page left blank for user comments.