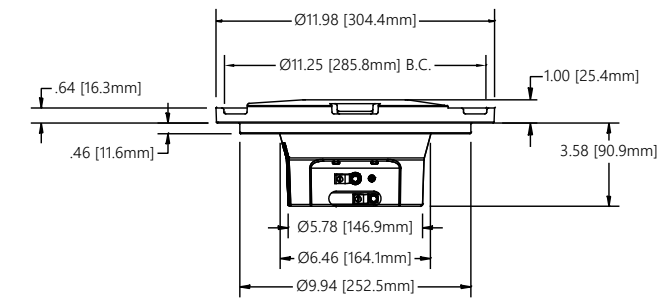


**1 PIECE BASE INSTALLATION
L-852N**



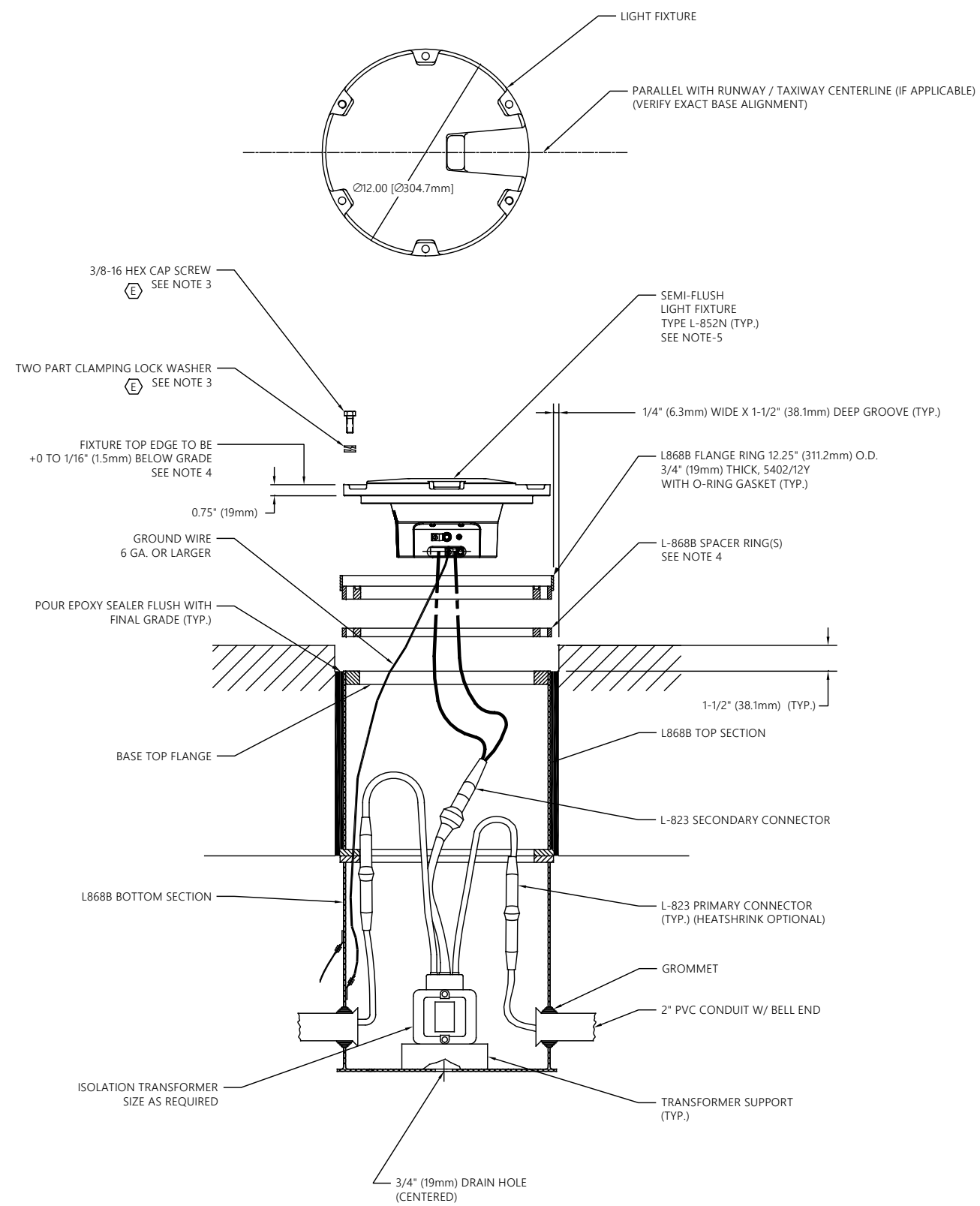
REFERENCE DIMENSIONS

LIGHT DETAIL NOTES:

1. LIGHT BASES SHALL BE INSTALLED WITH CARE TO ASSURE VERTICAL & AZIMUTH ALIGNMENT OF FIXTURE.
2. PROVIDE 2'-3' (600-900mm) CABLE SLACK WITHIN LIGHT BASE TO ALLOW TRANSFORMER SERVICING.
- Ⓔ 3. REFER TO FAA ENGINEERING BRIEF 83 (LATEST EDITION) FOR RECOMMENDED INSTALLATION REQUIREMENTS INCLUDING BOLT, WASHER, AND TORQUE GUIDANCE.
4. AS REQUIRED TO MAINTAIN +0/-1/16" (1.5mm) BELOW GRADE FAA INSTALLATION TOLERANCE. A MAXIMUM OF THREE SPACER RINGS MAY BE STACKED TOGETHER, INCLUDING FLANGE RING..
5. ADB SAFEGATE PART {44A6578/XXXX} OR EQUAL, STYLE 3 LOW PROFILE.

CAUTION:
THIS DRAWING IS ONLY INTENDED FOR USE AS GENERAL AIRFIELD SYSTEM DESIGN GUIDANCE. THE DESIGNER MUST VERIFY DESIGN WITH LOCAL CODES AND VARYING CHARACTERISTICS FOR EACH UNIQUE AIRFIELD APPLICATION.

CONTROLLED COPY			
Unauthorized duplication of this document in whole or part is prohibited. Initialed in RED ink below indicates authorized copy.			
INITIAL & DATE:			
ADB SAFEGATE			
P.O. Box 30829		Tel: (614) 861-1304	
977 Gahanna Parkway		Fax: (614) 864-2069	
Columbus, OH 43230			
DRAWING TITLE: SIGNATURE SERIES LED UNI-DIRECTIONAL L-852N IN-PAVEMENT FIXTURE INSTALLATION			
REV LEVEL	ECO NUMBER	REVISION DESCRIPTION	DRAWN BY REV DATE
E	270	REFER EB 83	JEG 12JUN19
D	4228	MODIFY TORQUE VALUE	DLR 2MAR16
C	3588	SEE ECO-ADD GROUND INSIDE	DTR 13MAR12
B	3015	ADD REF DIM VIEW	JLC 15DEC10
A	----	INITIAL RELEASE	GAM 22OCT07
ASSOCIATED DRAWINGS:		DRAWN BY: 22OCT07	
Information contained on this drawing is to be used expressly in accord with purpose for which it was submitted. Any disclosure of this information is strictly prohibited except as ADB SAFEGATE, Inc. may otherwise agree in writing. Copyright © 2010 ADB SAFEGATE.			
DRAWING NUMBER: 117A0045		SCALE: N/A	SHEET NUMBER: 1 OF 2
			REV: E



2 PIECE BASE INSTALLATION
L-852N

CAUTION:
THIS DRAWING IS ONLY INTENDED FOR USE AS GENERAL AIRFIELD SYSTEM DESIGN GUIDANCE. THE DESIGNER MUST VERIFY DESIGN WITH LOCAL CODES AND VARYING CHARACTERISTICS FOR EACH UNIQUE AIRFIELD APPLICATION.

LIGHT DETAIL NOTES:

1. LIGHT BASES SHALL BE INSTALLED WITH CARE TO ASSURE VERTICAL & AZIMUTH ALIGNMENT OF FIXTURE.
2. PROVIDE 2'-3' (600-900mm) CABLE SLACK WITHIN LIGHT BASE TO ALLOW TRANSFORMER SERVICING.
- Ⓔ 3. REFER TO FAA ENGINEERING BRIEF 83 (LATEST REVISION) FOR RECOMMENDED INSTALLATION REQUIREMENTS INCLUDING BOLT, WASHER, AND TORQUE GUIDANCE.
4. AS REQUIRED TO MAINTAIN +0/-1/16" (1.5mm) BELOW GRADE FAA INSTALLATION TOLERANCE. A MAXIMUM OF THREE SPACER RINGS MAY BE STACKED TOGETHER, INCLUDING FLANGE RING.
5. ADB SAFEGATE PART {44A6578/XXXX} OR EQUAL, STYLE 3 LOW PROFILE.

"EXAMPLE" SEQUENCE OF WORK:

STEP 1
ELECTRICAL CONTRACTOR LOCATES NEW LIGHT BASES AND INTERCONNECTING CONDUIT TRENCH, AND EXCAVATES FOR LIGHT BASE BOTTOM SECTION BY SAW CUTTING OR CORE DRILLING. ELECTRICAL CONTRACTOR PREPARES SUBGRADE AND STONE SUBBASE, SETS BOTTOM SECTION WITH REBAR, RIGID STEEL CONDUIT STUBS AND DRAIN, AND POURS HIGH EARLY STRENGTH CONCRETE-ENCASEMENT EXCAVATION. ELECTRICAL CONTRACTOR SHALL RECORD CAN LOCATIONS AND ELEVATIONS OF MUD PLATE AFTER CONCRETE-ENCASEMENT.

ELECTRICAL CONTRACTOR EXCAVATES CONDUIT TRENCH, INSTALLS RIGID STEEL AND FITTINGS, BACKFILLS CONDUIT TRENCH WITH HIGH EARLY STRENGTH CONCRETE.

STEP 2
GENERAL CONTRACTOR PREPARES AND INSTALLS CONCRETE PAVEMENT. ELECTRICAL CONTRACTOR MAKES A PILOT CORE TO FIND MUD PLATE CENTER POINT INDENT BEFORE FINAL CORE-DRILLING.

STEP 3
ELECTRICAL CONTRACTOR CORE-DRILLS CONCRETE PAVEMENT. ELECTRICAL CONTRACTOR INSTALLS TOP SECTION, Y-FLANGE RING, SPACE AND LIGHTING FIXTURE, AND POURS EPOXY JOINT SEALER. PROVIDE SPACE FOR ADJUSTMENT WITH SPACERS, MAXIMUM NUMBER OF SPACERS SHALL BE 3.

CONTROLLED COPY			
Unauthorized duplication of this document in whole or part is prohibited. Initialed in RED ink below indicates authorized copy.			
INITIAL & DATE:			
ADB SAFEGATE			
P.O. Box 30829		Tel: (614) 861-1304	
977 Gahanna Parkway		Fax: (614) 864-2069	
Columbus, OH 43230			
E	270	REFER EB 83	JEG 12JUN19
D	4228	MODIFY TORQUE VALUE	DLR 2MAR16
C	3588	SEE ECO-ADD GROUND INSIDE	DTR 13MAR12
B	3015	ADD REF DIM VIEW	J.L.C. 15DEC10
A	----	INITIAL RELEASE	GAM 22OCT07
REV LEVEL	ECO NUMBER	REVISION DESCRIPTION	DRAWN BY REV DATE
ASSOCIATED DRAWINGS:		DRAWN BY:	DATE:
		22OCT07	
Information contained on this drawing is to be used expressly in accord with purpose for which it was submitted. Any disclosure of this information is strictly prohibited except as ADB SAFEGATE, Inc. may otherwise agree in writing. Copyright © 2010 ADB SAFEGATE.			
DRAWING NUMBER:		SCALE:	SHEET NUMBER:
117A0045		N/A	2 OF 2
			REV: E