

Airfield Lighting

Spare Part List

SafeLED and SafeLED IO Elevated Light
(SL-RE-E-B, SL-RE-E-O)

- Runway Edge

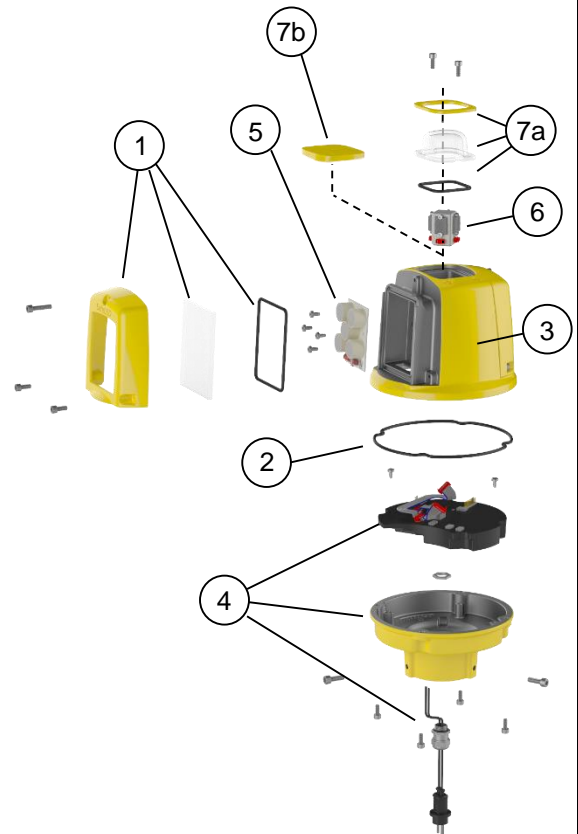


Note: *This page is blank for convenient double-sided printing.*

**SPARE PART LIST
SAFELED AND SAFELED IQ ELEVATED LIGHT
(SL-RE-E-B, SL-RE-E-O)**

Note: Contact Safegate Group for assistance with ordering spare parts.

Description	Quantity per		Order Code
	fitting	order	
1 Window frame, front glass and window gasket*	2	10	18408
2 Housing o-ring gasket	1	10	17116
3 Housing top cover	1	1	18409
4a Housing bottom cover* (including SafeLED electronics)	1	1	18410
4b Housing bottom cover* (including SafeLED IQ0 electronics)	1	1	18411
5a LED board 5 LEDs* (White for precision approach version, including cables)	1-2	2	18412
5b LED board 4 LEDs* (Yellow for precision approach version, including cables)	1	2	18413
5c LED board 4 LEDs* (Red for precision approach version, including cables)	1	2	18414
5d LED board 5 LEDs* (White for circular guidance version, including cables)	1-2	2	18470
5e LED board 4 LEDs* (Yellow for circular guidance version, including cables)	1	2	18471
5f LED board 4 LEDs* (Red for circular guidance version, including cables)	1	2	18472
6a Circular guidance module* (White-White, including cables)	1	1	18415
6b Circular guidance module* (White-Yellow, including cables)	1	1	18416
6c Circular guidance module* (White-Red, including cables)	1	1	18417
6d Circular guidance module* (Yellow-Red, including cables)	1	1	18432
7a Glass dome* (including top plate and gasket, for circular guidance version)	1	10	18418
7b Top plate * (including gasket, for precision approach version)	1	10	18419



***All screws for fastening are included.**

Note: Component availability or design may be subject to change due to unforeseen circumstances. This document is subject to change or new information from Safegate Group, as and when available or if required, with reservation for error or price changes.

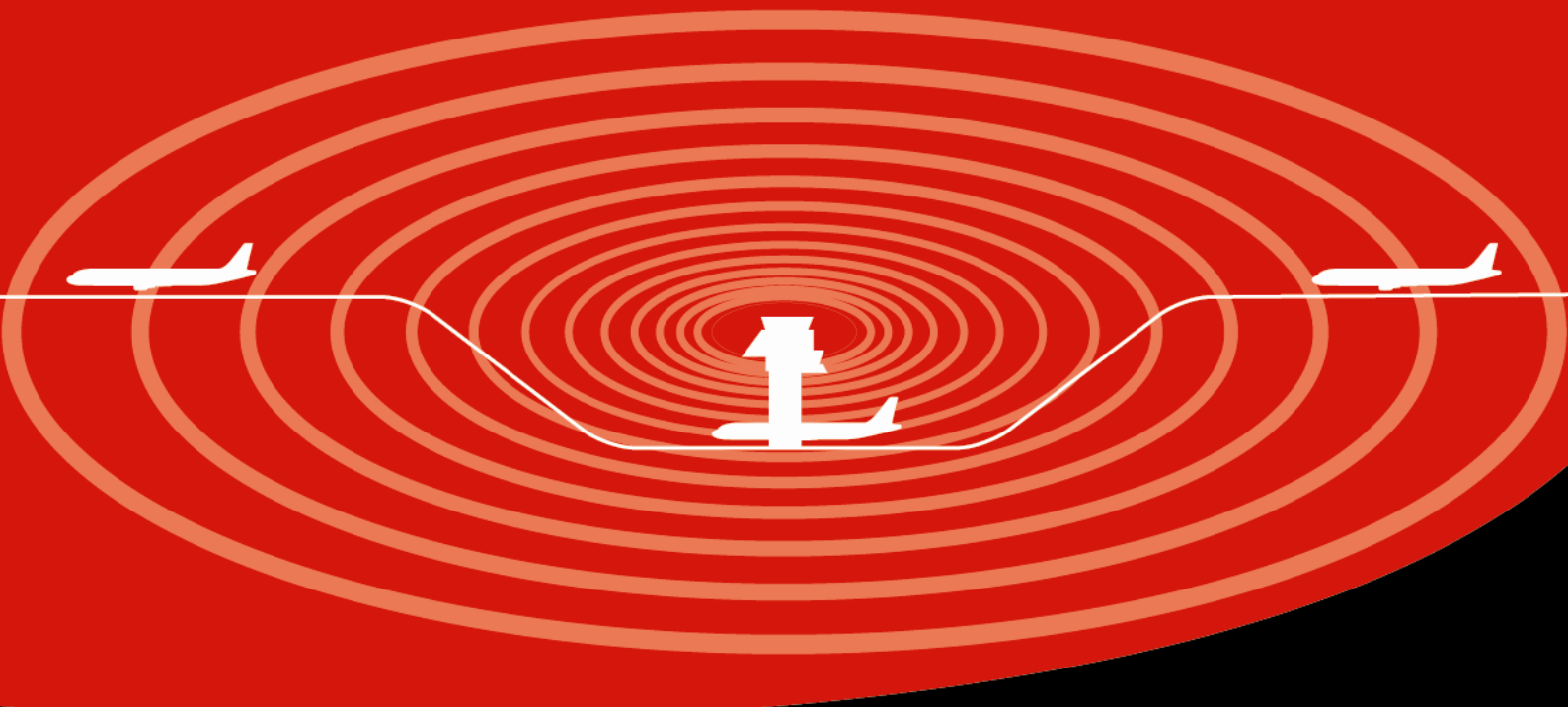
For more information, contact Safegate Group or see www.safegate.com.

Check in to the future

How many aircraft can your airport handle today? Can this number be increased without adverse effects on the airport's safety level? It is a known fact that traffic volume will rise in the foreseeable future. More movements will demand monitoring of the entire airport. Requirements will be sharpened and the development of an integrated system

controlling not only ground movements but also air traffic close to the airport is of the highest interest. The International Civil Aviation Organization (ICAO) already describes A-SMGCS, Advanced Surface Movement Guidance and Control System, as the answer to the future modern airport need to control the entire airport space in one superior system.

To a larger extent than today's systems, A-SMGCS will rely on automated processes to give both pilots and traffic controllers exact information about positions and directions. Safegate Group delivers complete A-SMGCS solutions already, as well as all vital parts relating to it. Safegate Group can check your airport into the future – today!



Safegate Group HQ
Djurhagegatan 19
SE-213 76 Malmö, Sweden
Phone: +46 (0)40 699 17 00
Fax: +46 (0)40 699 17 30
E-mail: market@safegate.com

Australia
australia@safegate.com
+61 (0)3 9720-3233

Austria
office@avibit.com
+43 316 429961

Brazil
brazil@safegate.com
+55 11 2137 4405

China
china@safegate.com
+8610-85275297

Dubai
dubai@safegate.com
+971 4 452 75 75

Finland
finland@safegate.com
+358 (0)20754 7700

France
france@safegate.com
+33 (0)1 42 99 60 40

Germany
germany@safegate.com
+49 (0)4121 464 303

India
india@safegate.com
+91 11 4106 1545

Malaysia
malaysia@safegate.com
+60 32 011 3522

Qatar
qatar@safegate.com
+974 436 9628

Russia
russia@safegate.com
+7 495 917 4614

Singapore
singapore@safegate.com
+65 6289 6893

Spain
spain@safegate.com
+34 917 157 598

UK
uk@safegate.com
+44 (0)208 573 0384

USA
usa@safegate.com
+1 763 535 92 99

SAFEGATE
GROUP 

Safegate Group offers solutions for increased safety, efficiency and environmental benefits to airports worldwide. The company was founded in 1973 and has its headquarters in Malmö, Sweden. Safegate Group has more than 70 partners around the globe in order to be close to its customers. Earlier members of Safegate Group include Thorn AFL and Idman, who both have over 40 years of experience in airfield lighting solutions for airports and heliports. The latest member of Safegate Group is Avibit, a leading provider of next generation software applications and integration of efficient air traffic control systems. Safegate Group's complete range of products and services, a "one-stop shop", provides solutions to customers and airborne travellers around the globe.

www.safegate.com