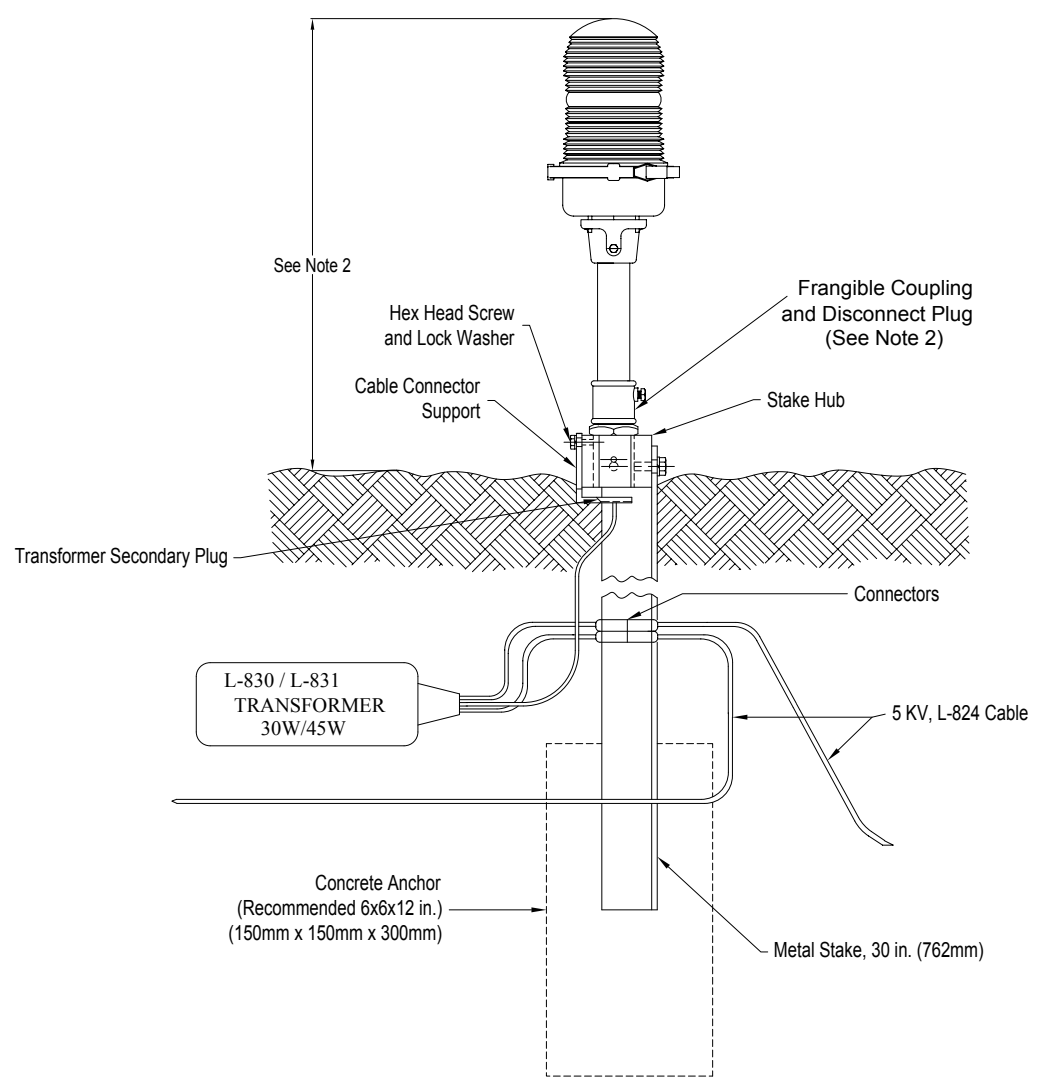


EXAMPLE OF BASE MOUNTED L-861 FIXTURE INSTALLATION IN EXISTING SHOULDER SECTION



EXAMPLE OF STAKE MOUNTED L-861 FIXTURE INSTALLATION

NOTES:

1. APPLY ANTI-SIEZE COMPOUND TO THREADS OF FRANGIBLE COUPLING WHEN INSTALLING NEW OR REPLACING EXISTING L-861.
2. AVAILABLE IN STANDARD HEIGHTS OF 14, 24, AND 30 INCHES.
3. ADB AIRFIELD SOLUTIONS PART 44C1081/XXXX WITH QUARTZ & INCANDESCENT LAMP, 30W TAXIWAY AND 45W RUNWAY OR EQUAL.

CAUTION:
THIS DRAWING IS ONLY INTENDED FOR USE AS GENERAL AIRFIELD SYSTEM DESIGN GUIDANCE. THE DESIGNER MUST VERIFY DESIGN WITH LOCAL CODES AND VARYING CHARACTERISTICS FOR EACH UNIQUE AIRFIELD APPLICATION.

				CONTROLLED COPY	
				Unauthorized duplication of this document in whole or part is prohibited. Initialed in RED ink below indicates authorized copy.	
				INITIAL & DATE:	
				ADB	
				ADB Airfield Solutions P.O. Box 30829 Tel: (614) 861-1304 977 Gahanna Parkway Fax: (614) 864-2069 Columbus, OH 43230	
				DRAWING TITLE: L-861 QUARTZ/INCANDESCENT BASE AND STAKE MOUNT INSTALLATION	
B	3709	UPDATE TITLE BLOCK	DTR	14AUG12	
A	----		LWH	25MAR04	
REV LEVEL	ECD NUMBER	REVISION DESCRIPTION	DRAWN BY	REV DATE	
			LWH	25MAT04	
Information contained on this drawing is to be used expressly in accord with purpose for which it was submitted. Any disclosure of this information is strictly prohibited except as ADB Airfield Solutions, Inc. may otherwise agree in writing. Copyright © 2011 ADB Airfield Solutions.					
				SCALE:	N/A
				SHEET NUMBER:	1 of 1
				DRAWING NUMBER:	117A0008
					B