

RUNWAY LIGHTING

INL-RT

8" Unidirectional Runway Inset Light
HIGH-INTENSITY



Compliance with Standards

ICAO: Annex 14 Volume I Paragraphs 5.3.11, 5.3.12 and 5.3.13 for use in CAT I, II and III.

NATO: STANAG 3316

CAA: CAP 168

BSI: BS 3224

Uses

INL-RT is a 8" unidirectional high-intensity inset light.

- Runway Touchdown Zone
- Runway End
- Runway Centerline

Features & Benefits

- Low power consumption: only 45 Watts for runway touchdown zone
- Lamp life greater than 1,000 hours at 6.6 Amps
- low projection: 12.7 mm (1/2")
- Small diameter: 203 mm (8")
- Shallow depth: installation in 100 mm shallow base (shallow cover version).
- Excellent photometric performances obtained by the use of reflector lamp:
 - Improved luminous efficacy
 - Identical lamp performance: Reflector being an integral part of the lamp, hence each time the lamp is changed there will be a new reflector
 - High optical stability: no internal adjustment needed since the pre-focused lamp is always correctly positioned inside the lamp reflector
- Very easy and high-speed maintenance: small quantity of components so lights can be easily dismantled
- Non-sealed prism easy to replace
- Valve for water-tightness test
- Many parts common with other lights in the same model range
- Easy handling and transport due to small size and low weight

Technical Data

Component	Description
Lamp:	45 or 105 Watts 6.6 Amps pre-focused halogen lamp with an integral dichroic-coated reflector. Lamp life at 6.6 Amps greater than 1,500 hours for 45 W and 1,000 hours for 105 W
Power Supply:	The fitting is delivered equipped of one two-pole secondary FAA plug to connect it to an isolating transformer
Photometry:	Distribution and homogeneity comply with Appendix 2 of ICAO Annex 14 Volume I and with FAA L-850B
Color:	Red dichroic filter. Chromaticity complies with Appendix 1 of ICAO Annex 14. Volume I
Finish:	All external parts are made of anodised tempered aluminium alloy casting. All fixings and fastenings are stainless steel
Fixing on support:	By two M10 studs and nuts (supplied with the base or the adapter ring)
Projection:	12.7 mm (1/2")
External diameter:	203 mm (8")
Net Weight:	2.8 kg

Installation

Options

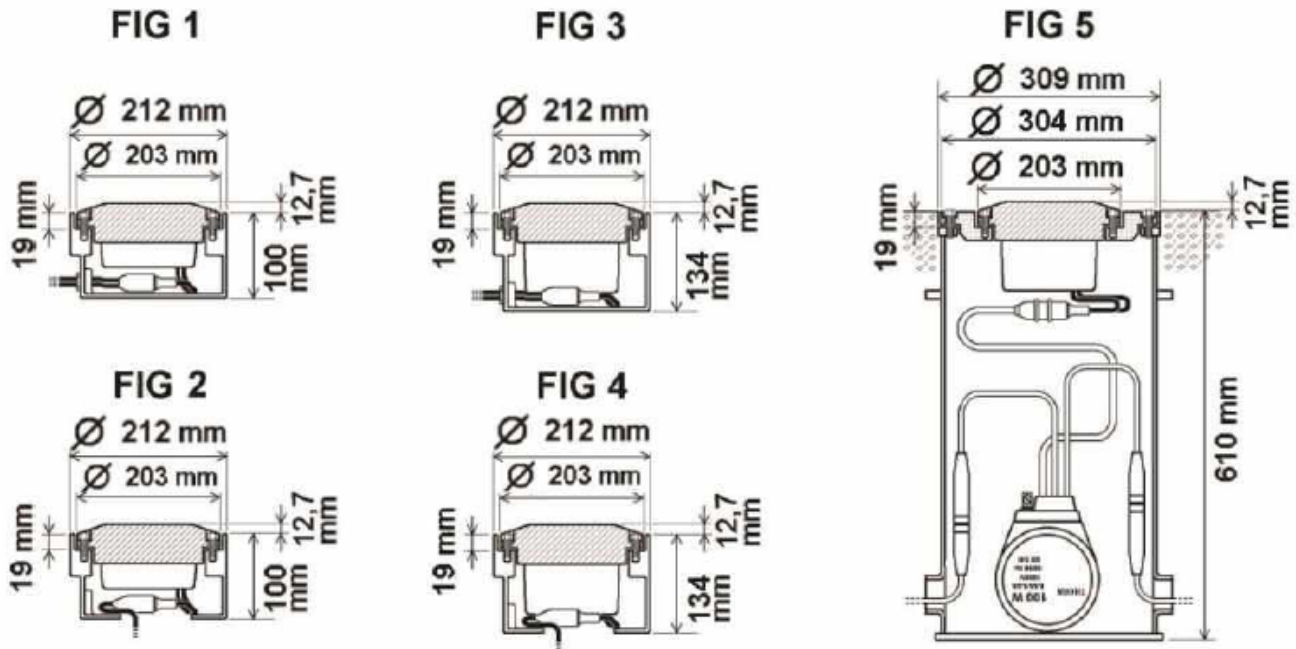
- On 8" shallow base 100 mm deep with side access (FIG 1) or with bottom access (FIG 2). Shallow Cover.
- On 8" shallow base 134 mm deep with side access (FIG 3) or with bottom access (FIG 4). Long Cover.
- On FAA L-868B deep base by means of 12"/ 8" adapter ring (FIG 5).
- On SR8 seating ring by means of SR8/8" adapter ring.

Note: When the fitting is equipped with a cut-out device (relay or film disk), a long cover must be used and the minimum depth of the base must be 134 mm. For more information, see the Design section.

RUNWAY LIGHTING

INL-RT

Installation Diagrams



Photometric Data

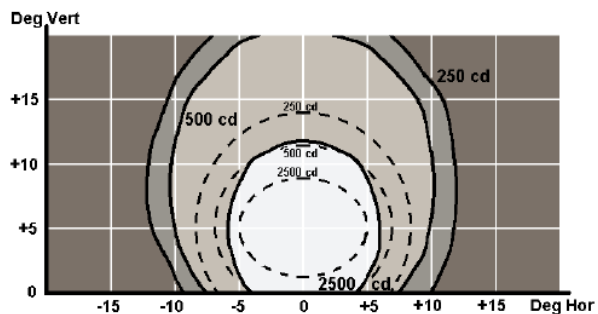
This section includes photometric examples of different light configurations.

Runway Touchdown Zone, Runway Centerline

INL-RT (1 × 45 Watts) - Unidirectional White Light

I average : 7,200 cd

I max / I min : 2.70

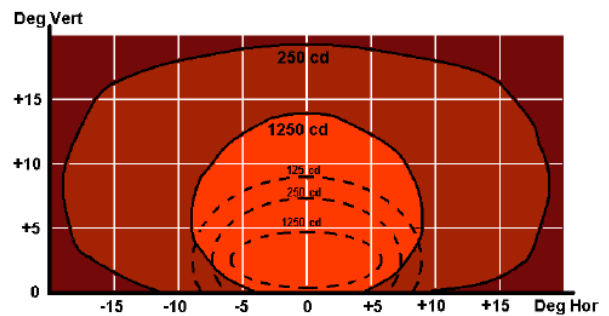


Runway End

INL-RT (1 × 105 Watts) - Unidirectional Red Light

I average : 2,550 cd

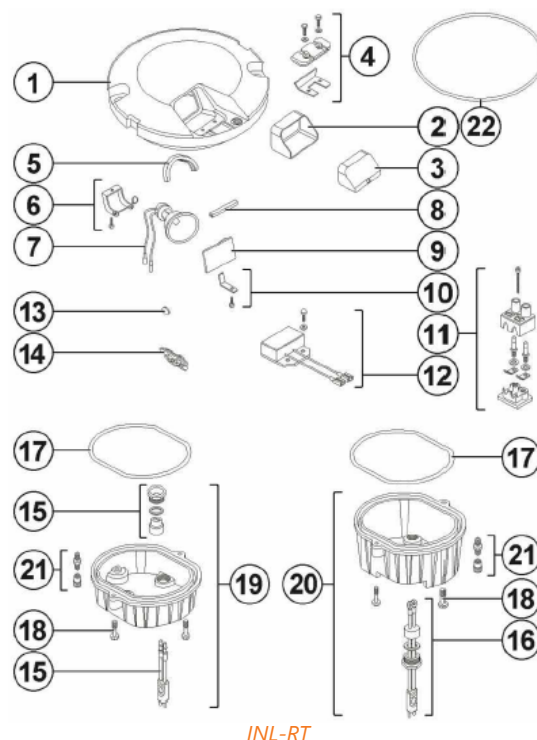
I max / I min : 1.90



Construction

Components

1. Body
2. Silicone prism gasket
3. Non-sealed prism
4. Prism clamp with accessories
5. Lamp support
6. Lamp fixing spring and screw
7. Pre-focused halogen dichroic reflector lamp 45 or 105 Watts (*) at 6.6 Amps Diameter 50 mm
8. Deviator / filter protection gasket
9. Deviator / filter
10. Deviator / filter fixing spring its screw
11. Cable terminal
12. Cut out relay (*)
13. Film disk cut out (*)
14. Film disk cut out holder (*)
15. Cable subassembly for short cover
16. Cable subassembly for long cover
17. Cover gasket
18. Cover screw
19. Equipped short cover
20. Equipped long cover (*)
21. Valve for water tightness tests
22. O-ring gasket for THORN 8" shallow base.



Note: * The complete fitting is delivered with water tightness O-ring gasket for a ADB Safegate (THORN) AFL 8" shallow base.

Packaging

Designation	Volume m ³	Dimensions mm	Weight kg
INL-RG Fitting with short cover	0,007	220 x 220 x 145	2.9
ILP-T Fitting with long cover	0,007	220 x 220 x 145	3.0

RUNWAY LIGHTING

INL-RT

Ordering Code

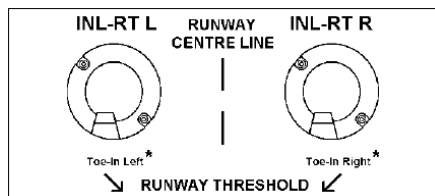
The table below is a guide to order codes for a fitting with available component parts.

Description	Components	INL-RTL	45 W	W	SC	FD
Toe-in (Touchdown zone)*						
Toe-in Right	R					
Toe-in Left	L					
No toe-in	S					
Lamp						
Touchdown zone, Runway centre line	45W					
Runway End	105W					
Colour						
White (Touchdown zone)	W					
Red filter (Runway End)	R					
Cover size						
Short Cover	SC					
Long Cover	LC					
Cut out device (option)						
One cut out relay	RL					
One film disk cut out	FD					
Additional 8" shallow base and Adapter ring For more information, contact ADB Safegate or see www.adbsafegate.com .						

Specification

- The runway touchdown zone inset light shall be unidirectional high intensity complying with ICAO recommendations in Annex 14, Volume I, paragraphs 5.3.11 and 5.3.13, with FAA L-850B standards, and STANAG 3316 standards, CAP168 and British Standards BS 3224.
- It shall be fitted with one 6.6 Amps halogen pre-focused dichroic reflector lamp not exceeding 45 or 105 Watts. Lamp life shall be at full intensity greater than 1,500 hours for 45 W and 1,000 hours for 105 W.
- All external parts shall be made of anodised tempered aluminium alloy casting. All fixings and fastenings shall be stainless steel.
- It shall have a maximum outer diameter of 203 mm (8") and its projection shall not exceed 12.7 mm (1/2").
- It must be able to be installed directly on an 8" shallow base, or by means of adapter on a FAA L-868B deep base or a seating ring.
- Fitting installation shall be always parallel to runway centre line axis even if this light needs a toe-in.
- It will be design to allow easy maintenance.
- The prism shall not be sealed.
- The filter shall be dichroic.
- The fittings in this model range share many of the same components.
- No internal adjustment shall be needed.
- The weight of the fitting shall be lower than 2.8 kg.

Note: All descriptions and photometric characteristics in this publication present only general particulars and shall not form part of any contract. The right is reserved to change them without prior notification.



www.adbsafegate.com

Product specifications may be subject to change, and specifications listed here are not binding. Confirm current specifications at time of order.