

Airfield Lighting

Spare Part List

EL-AT

THORN
Airfield Lighting

Uni-directional (high/medium intensity) elevated light

- Approach
 - Centre line
 - Crossbar
 - Side row
- Barrettes
 - Runway Edge
 - Runway Threshold
 - Runway End
- Wing Bar
- Stop Bar



Note: *This page is blank for convenient double-sided printing.*

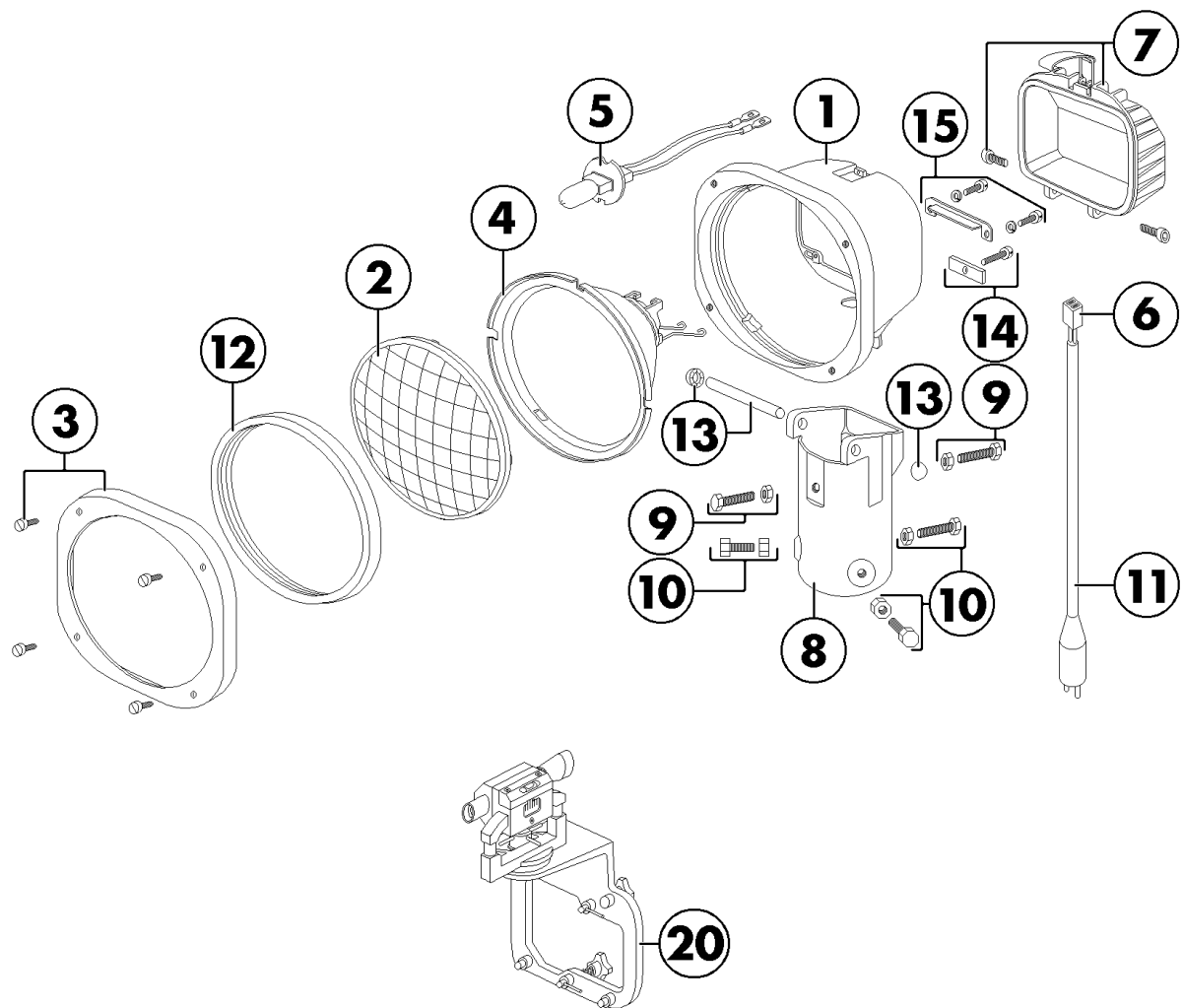
EL-AT SPARE PART LIST

The following is a list of spare parts and a view on the next page for EL-AT fittings.

Note: Contact Safegate Group for assistance with ordering spare parts.

Item	Description	Quantity per		New Code	Old code
		fitting	code		
1	Body	1		Not for Sale	Not for Sale
2	Front glass	1	1		
	- White			12809	500781
	- Red			12810	500782
	- Green			12811	500783
	- Green dichroic			12670	500211
	- Yellow			12812	500784
3	Front clamping ring with fixing screw	1	1	12601	48644
4	Reflector with lamp support	1	1	12547	47771
5	PK30d lamp 200W 6.6A	1	1	11990	23226
	PK30d lamp 1500W 6.6A	1	1	11989	47149
	PK30d lamp 100W 6.6A	1	1	11988	23227
	PK30d lamp 45W 6.6A	1	1	11991	24085
6	Cable terminal	1	1	12667	500205
7	Rear door for access to lamp with closing spring and fixing screws	1	1	12563	48266
8	Hinged support	1	1	Not for Sale	Not for Sale
6/11	Two-pole cable with FAA secondary plug	1	1	12814	500786
12	Front glass gasket	1	1	12813	500785
9/ 10/ 13/	Lock tight screw for elevation angle locking + Lock tight screw for fixing on the support + Hinged axis with stop	1 Batch	1	13198	502016
14/ 15	Cable fixating bar and it screw + Protection bar and screws	1 Batch	1	13197	502015
20	Setting tool for EL-AT		1	13264	400996
<p>Note: Component availability or design may be subject to change due to unforeseen circumstances. This document is subject to change or new information from Safegate Group, as and when available or if required, with reservation for error or price changes.</p> <p>* Contact Safegate Group for assistance with ordering spare parts.</p>					

EL-AT view



Note: *This page is blank for convenient double-sided printing.*

Check in to the future

How many aircraft can your airport handle today?
Can this number be increased without adverse effects on the airport's safety level?
It is a known fact that traffic volume will rise in the foreseeable future. More movements will demand monitoring of the entire airport. Requirements will be sharpened and the development of an integrated system

controlling not only ground movements but also air traffic close to the airport is of the highest interest.
The International Civil Aviation Organization (ICAO) already describes A-SMGCS, Advanced Surface Movement Guidance and Control System, as the answer to the future modern airport need to control the entire airport space in one superior system.

To a larger extent than today's systems, A-SMGCS will rely on automated processes to give both pilots and traffic controllers exact information about positions and directions. Safegate Group delivers complete A-SMGCS solutions already, as well as all vital parts relating to it. Safegate Group can check your airport into the future – today!



Safegate Group HQ
Djurhagegatan 19
SE-213 76 Malmö, Sweden
Phone: +46 (0)40 699 17 00
Fax: +46 (0)40 699 17 30
E-mail: market@safegate.com

Australia
australia@safegate.com
+61 (0)3 9720-3233

Brazil
brazil@safegate.com
+55 11 2137 4405

China
china@safegate.com
+8610-85275297

Dubai
dubai@safegate.com
+971 4 452 75 75

Finland
finland@safegate.com
+358 (0)20754 7700

France
france@safegate.com
+33 (0)1 49 53 62 62

Germany
germany@safegate.com
+49 (0)231 9776754

India
india@safegate.com
+91 11 4106 1545

Malaysia
malaysia@safegate.com
+60 16 551 7126

Qatar
qatar@safegate.com
+974 436 9628

Russia
russia@safegate.com
+7 495 917 4614

Singapore
singapore@safegate.com
+65 6289 6893

Spain
spain@safegate.com
+34 917 157 598

UK
uk@safegate.com
+44 (0)208 573 0384

USA
usa@safegate.com
+1 763 535 92 99

THORN **IDMAN**
Airfield Lighting

SAFEGATE
GROUP 

Safegate Group offers solutions for increased safety, efficiency and environmental benefits to airports around the world. The company was founded in 1973 and has its headquarters in Malmö, Sweden. Safegate Group has over 70 partners around the globe in order to be close to its customers. The latest members of Safegate Group, Thorn AFL and Idman, have both over 40 years of experience in airfield lighting solutions for airports and heliports worldwide. Safegate Group's complete range of products and services, a "one-stop shop", provides solutions to customers and airborne travellers around the globe.

For more contact information and details:
www.safegate.com