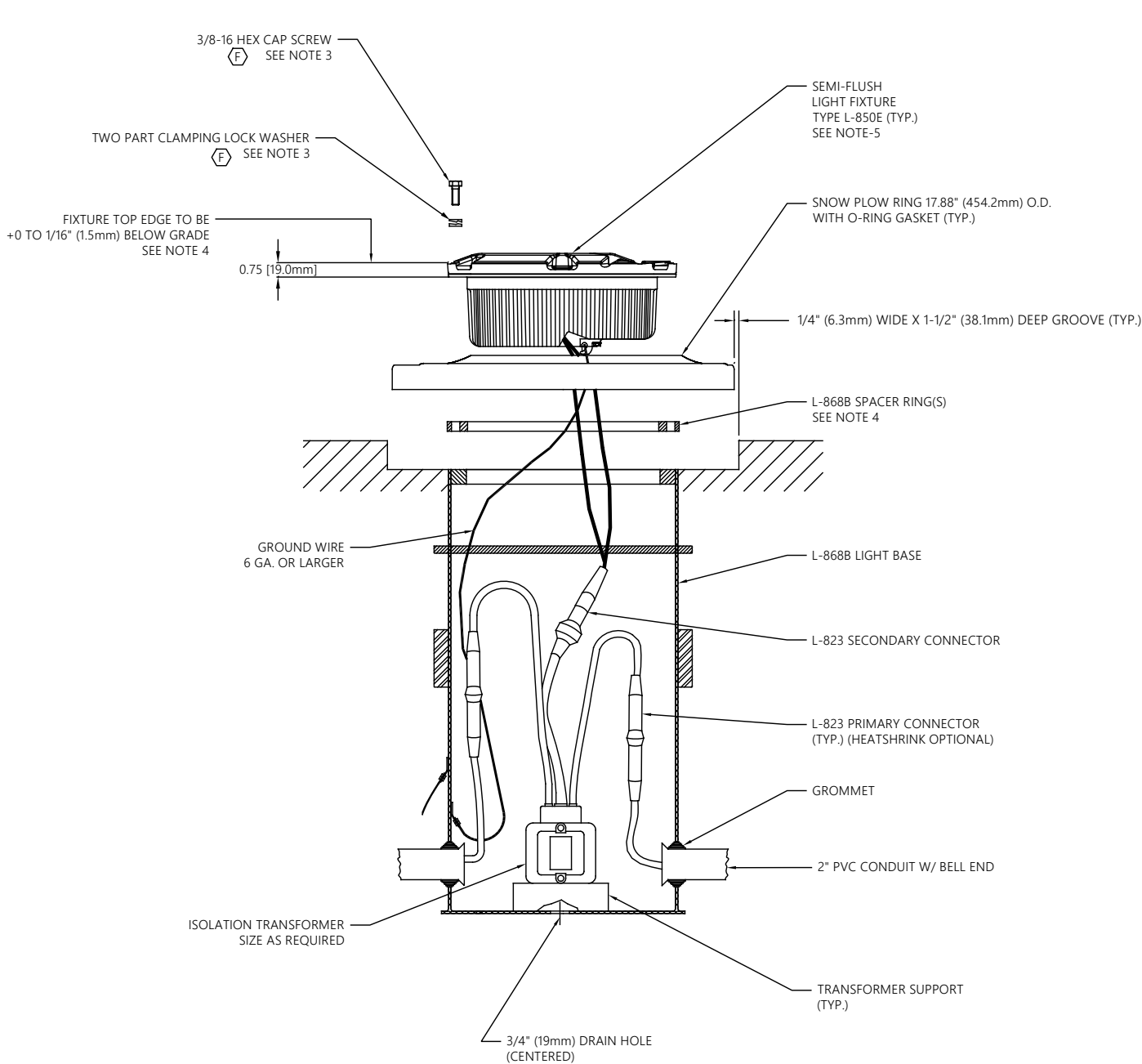




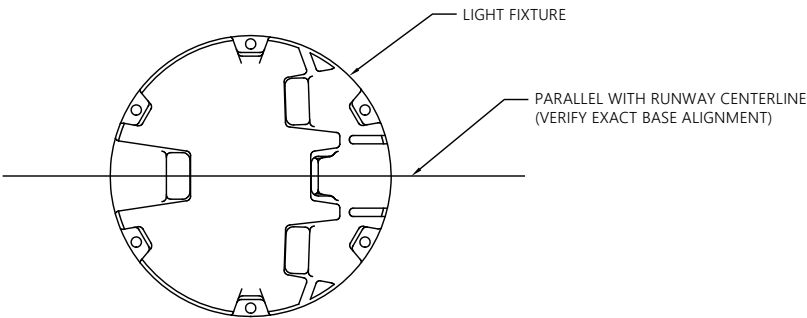
1. LIGHT BASES SHALL BE INSTALLED WITH CARE TO ASSURE VERTICAL & AZIMUTH ALIGNMENT OF FIXTURE.
2. PROVIDE 2'-3" (600-900mm) CABLE SLACK WITHIN LIGHT BASE TO ALLOW TRANSFORMER SERVICING.
3. REFER TO FAA ENGINEERING BRIEF 83 (LATEST REVISION) FOR RECOMMENDED INSTALLATION REQUIREMENTS INCLUDING BOLT, WASHER, AND TORQUE GUIDANCE.
4. AS REQUIRED TO MAINTAIN FAA INSTALLATION TOLERANCE OF  $\pm \frac{.10}{.176}$  (1.5mm). A MAXIMUM OF THREE SPACER RINGS MAY BE STACKED TOGETHER, INCLUDING FLANGE RING.
5. ADB SAFEGATE PART (44A6248/XXX0) OR EQUAL.
6. FOR 20A SERIES CIRCUITS, ISOLATION TRANSFORMER SHALL BE 200W, 20A/6.6A, ADB SAFEGATE PART # 35C0083 OR EQUAL. FOR 6.6A SERIES CIRCUITS, ISOLATION TRANSFORMER SHALL BE 200W, 6.6A, ADB PART # 35C0082 OR EQUAL.

						<h1 style="text-align: center;">CONTROLLED COPY</h1> <p>Unauthorized duplication of this document in whole or part is prohibited. Initialed in RED ink below indicates authorized copy.</p> <p>INITIAL &amp; DATE:</p>	
							
F	270	REFER EB 83	JEG	12JUN19	P.O. Box 30829      Tel: (614) 861-1304 977 Gahanna Parkway      Fax: (614) 864-2069 Columbus, OH 43230		
E	4228	MODIFY TORQUE VALUE	DLR	1MAR16	DRAWING TITLE: SIGNATURE SERIES F-RANGE IN-PAVEMENT FIXTURE INSTALLATION L-850E RUNWAY APPROACH AND THRESHOLD		
D	3588	SEE ECO-ADD INTERNAL GROUND	DTR	14MAR12			
C	3015	ADD REF DIM VIEW	JLC	15DEC10			
B	----	CHNG .78" DIM TO .75"	DTR	10MAY06			
A	----		JEG	29MAR05			
REV LEVEL	ECO NUMBER	REVISION DESCRIPTION	DRAWN BY	REV DATE			
ASSOCIATED DRAWINGS:		DRAWN BY: JEG	DRAWN DATE: 29MAR05				
Information contained on this drawing is to be used expressly in accord with purpose for which it was submitted. Any disclosure of this information is strictly prohibited except as ADB SAFEGATE may otherwise agree in writing. Copyright © 2010 ADB SAFEGATE.					SCALE: N/A		SHEET NUMBER: 1 OF 2
					DRAWING NUMBER: 117A00024		REV. F

**CAUTION:**  
THIS DRAWING IS ONLY INTENDED FOR USE AS GENERAL AIRFIELD SYSTEM DESIGN GUIDANCE. THE DESIGNER MUST VERIFY DESIGN WITH LOCAL CODES AND VARYING CHARACTERISTICS FOR EACH UNIQUE AIRFIELD APPLICATION.



1 PIECE BASE INSTALLATION



LIGHT DETAIL NOTES:

1. LIGHT BASES SHALL BE INSTALLED WITH CARE TO ASSURE VERTICAL & AZIMUTH ALIGNMENT OF FIXTURE.
2. PROVIDE 2'-3' CABLE SLACK WITHIN LIGHT BASE TO ALLOW TRANSFORMER SERVICING.
3. REFER TO FAA ENGINEERING BRIEF 83 (LATEST REVISION) FOR RECOMMENDED INSTALLATION REQUIREMENTS INCLUDING BOLT, WASHER, AND TORQUE GUIDANCE.
4. AS REQUIRED TO MAINTAIN FAA INSTALLATION TOLERANCE OF  $\pm 0.0075$ ". A MAXIMUM OF THREE SPACER RINGS MAY BE STACKED TOGETHER, INCLUDING FLANGE RING.
5. ADB SAFEGATE PART (44A6148/XXX0) OR EQUAL.
6. FOR 20A SERIES CIRCUITS, ISOLATION TRANSFORMER SHALL BE 200W, 20A/6.6A, ADB SAFEGATE PART # 35C0083 OR EQUAL. FOR 6.6A SERIES CIRCUITS, ISOLATION TRANSFORMER SHALL BE 200W, 6.6A, ADB PART # 35C0082 OR EQUAL.

**CAUTION:**  
THIS DRAWING IS ONLY INTENDED FOR USE AS GENERAL AIRFIELD SYSTEM DESIGN GUIDANCE. THE DESIGNER MUST VERIFY DESIGN WITH LOCAL CODES AND VARYING CHARACTERISTICS FOR EACH UNIQUE AIRFIELD APPLICATION.

					CONTROLLED COPY	
					Unauthorized duplication of this document in whole or part is prohibited. Initialed in RED ink below indicates authorized copy.	
					INITIAL & DATE: _____	
					<div><div><div><div>ADB</div><div>SAFEGATE</div></div><div><div>P.O. Box 30829</div><div>977 Gahanna Parkway</div><div>Columbus, OH 43230</div></div><div><div>Tel: (614) 861-1304</div><div>Fax: (614) 864-2069</div></div></div></div>	
F	270	REFER EB 83	JEG	12JUN19	DRAWING TITLE: SIGNATURE SERIES F-RANGE IN-PAVEMENT FIXTURE INSTALLATION L-850E RUNWAY APPROACH AND THRESHOLD	
E	4228	MODIFY TORQUE VALUE	DLR	1MAR16		
D	3588	SEE ECO-ADD INTERNAL GROUND	DTR	14MAR12		
C	3015	ADD REF DIM VIEW	JLC	15DEC10		
B	----	CHNG .78" DIM TO .75"	DTR	10MAY06		
A	----		JEG	29MAR05		
REV LEVEL	ECO NUMBER	REVISION DESCRIPTION		DRAWN BY	REV DATE	
ASSOCIATED DRAWINGS:		DRAWN BY: JEG		DRAWN DATE: 29MAR05		
Information contained on this drawing is to be used expressly in accord with purpose for which it was submitted. Any disclosure of this information is strictly prohibited except as ADB SAFEGATE may otherwise agree in writing. Copyright © 2010 ADB SAFEGATE.						
					SCALE: N/A	SHEET NUMBER: 2 OF 2
					DRAWING NUMBER: 117A0024	REV: F