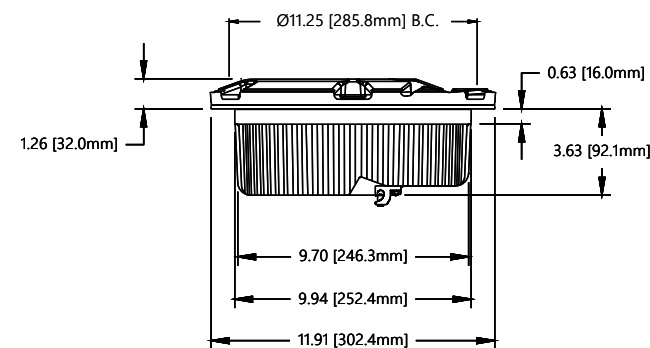
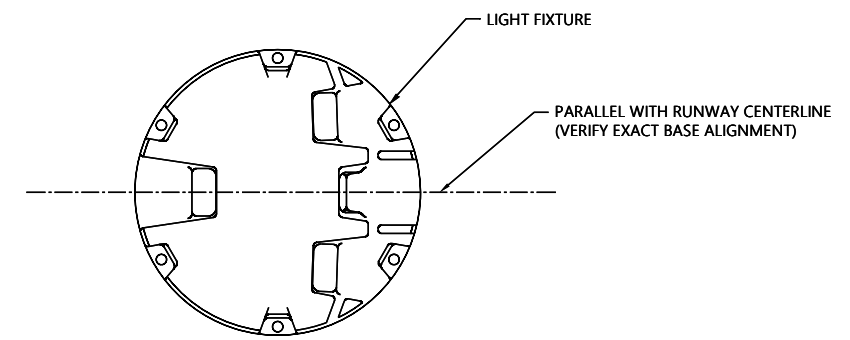


1 PIECE BASE INSTALLATION



REFERENCE DIMENSIONS

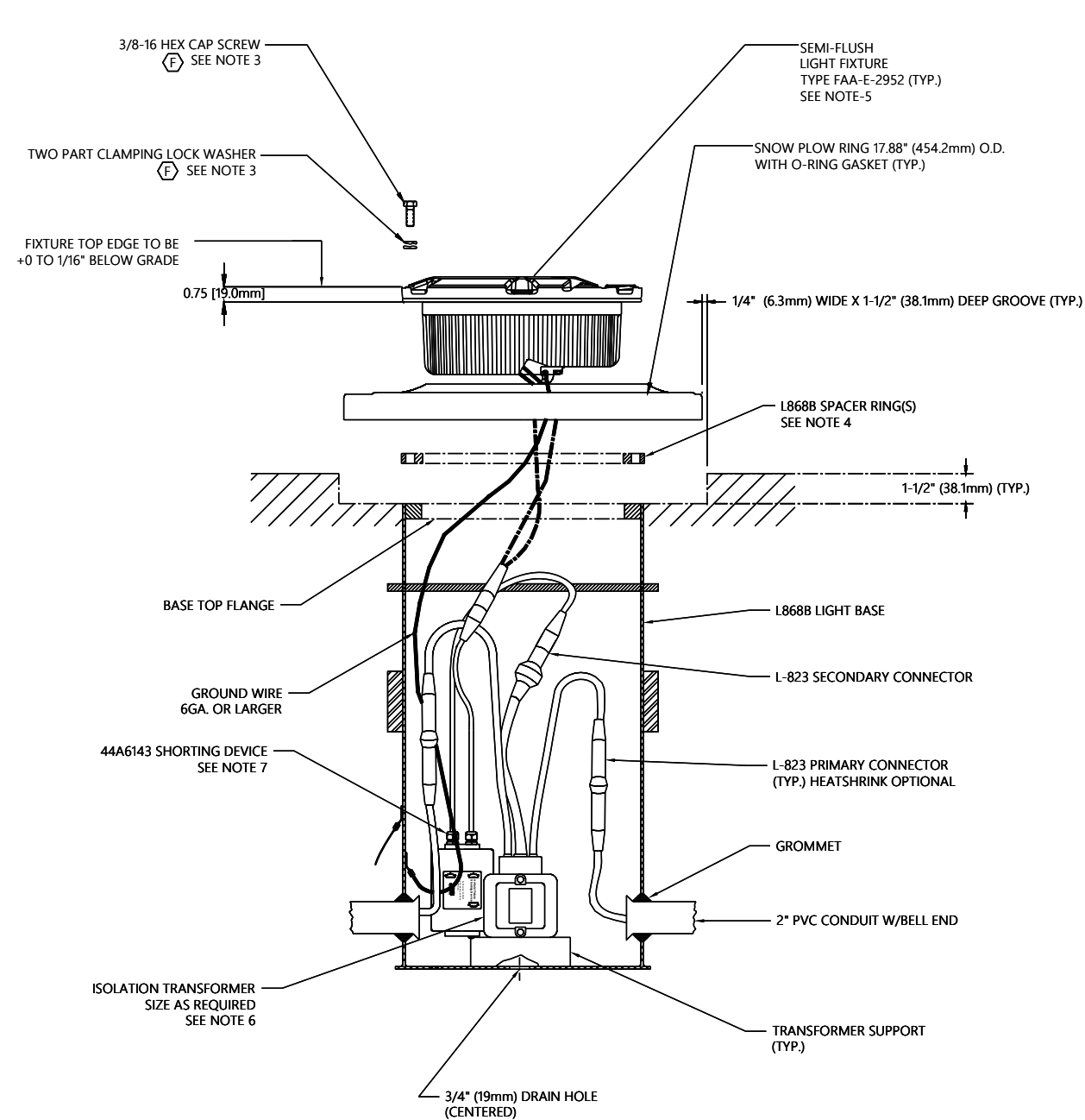


LIGHT DETAIL NOTES:

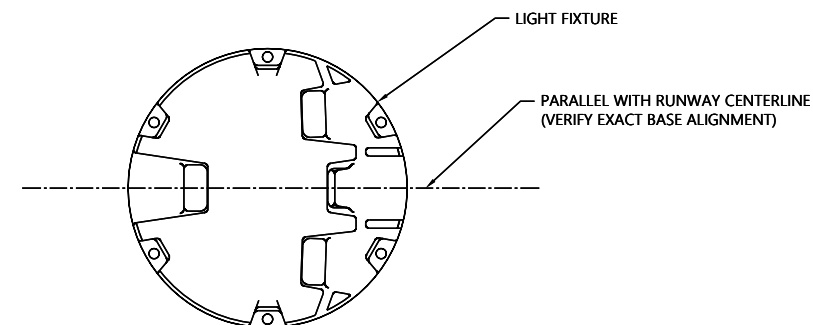
1. LIGHT BASES SHALL BE INSTALLED WITH CARE TO ASSURE VERTICAL & AZIMUTH ALIGNMENT OF FIXTURE.
2. PROVIDE 2'-3' (600-900MM) CABLE SLACK WITHIN LIGHT BASE TO ALLOW TRANSFORMER SERVICING.
- Ⓡ 3. REFER TO FAA ENGINEERING BRIEF 83 (LATEST REVISION) FOR RECOMMENDED INSTALLATION REQUIREMENTS INCLUDING BOLT, WASHER, AND TORQUE GUIDANCE.
4. AS REQUIRED TO MAINTAIN FAA INSTALLATION TOLERANCE OF ± 0 TO $-1/16$ " (1.5MM). A MAXIMUM OF THREE SPACER RINGS MAY BE STACKED TOGETHER, INCLUDING FLANGE RING.
5. ADB SAFEGATE PART {44A6148/X000} OR EQUAL.
6. FOR 20A SERIES CIRCUITS, ISOLATION TRANSFORMER SHALL BE 300W, 20A/6.6A, ADB SAFEGATE PART # 35C0087 OR EQUAL.
7. FOR THE AIRFLO / GODFREY ALSF-2 MONITORING SYSTEM, ADD ADB SAFEGATE PART NUMBER 44A6143 SHORTING DEVICE. FOR NBP MONITORING SYSTEM, USE LAMP MONITORING DEVICE SUPPLIED BY NBP.

CAUTION:
THIS DRAWING IS ONLY INTENDED FOR USE AS GENERAL AIRFIELD SYSTEM DESIGN GUIDANCE. THE DESIGNER MUST VERIFY DESIGN WITH LOCAL CODES AND VARYING CHARACTERISTICS FOR EACH UNIQUE AIRFIELD APPLICATION.

CONTROLLED COPY			
Unauthorized duplication of this document in whole or part is prohibited. Initialed in RED ink below indicates authorized copy.			
INITIAL & DATE: _____			
ADB SAFEGATE			
P.O. Box 30829		Tel: (614) 861-1304	
977 Gahanna Parkway		Fax: (614) 864-2069	
Columbus, OH 43230			
DRAWING TITLE: SIGNATURE SERIES F-RANGE IN-PAVEMENT FIXTURE INSTALLATION ALSF RUNWAY APPROACH CENTERLINE, CROSSBAR, AND SIDE ROW BARRETTES			
F	270	REFER EB 83	JEG 12JUN19
E	4228	MODIFY TORQUE VALUE & BOLT	DLR 2MAR16
D	3588	SEE ECO-ADD INTERNAL GROUND	DTR 14MAR12
C	3015	ADD REF DIM VIEW	JLC 14DEC10
B	----	CHNG .78" TO .75"	DTR 10MAY06
A	----		JEG 22MAR05
REV LEVEL	ECO NUMBER	REVISION DESCRIPTION	DRAWN BY / REV DATE
ASSOCIATED DRAWINGS:		DRAWN BY: JEG	DRAWN DATE: 29MAR05
Information contained on this drawing is to be used expressly in accord with purpose for which it was submitted. Any disclosure of this information is strictly prohibited except as ADB SAFEGATE may otherwise agree in writing. Copyright © 2010 ADB SAFEGATE.		SCALE: N/A	SHEET NUMBER: 1 OF 2
DRAWING NUMBER: 117A0021			REV: F



1 PIECE BASE INSTALLATION



LIGHT DETAIL NOTES:

1. LIGHT BASES SHALL BE INSTALLED WITH CARE TO ASSURE VERTICAL & AZIMUTH ALIGNMENT OF FIXTURE.
2. PROVIDE 2'-3' (600-900mm) CABLE SLACK WITHIN LIGHT BASE TO ALLOW TRANSFORMER SERVICING.
3. REFER TO FAA ENGINEERING BRIEF 83 (LATEST REVISION) FOR RECOMMENDED INSTALLATION REQUIREMENTS INCLUDING BOLT, WASHER, AND TORQUE GUIDANCE.
4. AS REQUIRED TO MAINTAIN FAA INSTALLATION TOLERANCE OF ± 0.015 (1.5mm). A MAXIMUM OF THREE SPACER RINGS MAY BE STACKED TOGETHER, INCLUDING FLANGE RING.
5. ADB SAFEGATE PART (44A6148/X000) OR EQUAL.
6. FOR 20A SERIES CIRCUITS, ISOLATION TRANSFORMER SHALL BE 300W, 20A/6.6A, ADB SAFEGATE PART # 35C0087 OR EQUAL.
7. FOR THE AIRFLO / GODFREY ALSF-2 MONITORING SYSTEM, ADD ADB SAFEGATE PART NUMBER 44A6143 SHORTING DEVICE. FOR NBP MONITORING SYSTEM, USE LAMP MONITORING DEVICE SUPPLIED BY NBP.

CAUTION:
THIS DRAWING IS ONLY INTENDED FOR USE AS GENERAL AIRFIELD SYSTEM DESIGN GUIDANCE. THE DESIGNER MUST VERIFY DESIGN WITH LOCAL CODES AND VARYING CHARACTERISTICS FOR EACH UNIQUE AIRFIELD APPLICATION.

CONTROLLED COPY			
Unauthorized duplication of this document in whole or part is prohibited. Initialed in RED ink below indicates authorized copy.			
INITIAL & DATE:			
ADB SAFEGATE			
P.O. Box 30829		Tel: (614) 861-1304	
977 Gahanna Parkway		Fax: (614) 864-2069	
Columbus, OH 43230			
DRAWING TITLE: SIGNATURE SERIES F-RANGE L-850 D IN-PAVEMENT FIXTURE INSTALLATION ALSF RUNWAY APPROACH CENTERLINE, CROSSBAR AND SIDE ROW BARRETTES (WITH SNOW PLOW RING)			
REV	ECO	REVISION DESCRIPTION	DRAWN BY
LEVEL	NUMBER		DATE
F	270	REFER EB 83	JEG 12JUN19
E	4228	MODIFY TORQUE VALUE & BOLT	DLR 2MAR16
D	3588	SEE ECO-ADD INTERNAL GROUND	DTR 14MAR12
C	3015	ADD REF DIM VIEW	JLC 14DEC10
B	----	CHNG .78" TO .75"	DTR 10MAY06
A	----		JEG 22MAR05
ASSOCIATED DRAWINGS:		DRAWN BY:	DRAWN DATE:
		JIM GAFFNEY	22MAR05
Information contained on this drawing is to be used expressly in accord with purpose for which it was submitted. Any disclosure of this information is strictly prohibited except as ADB SAFEGATE may otherwise agree in writing. Copyright © 2010 ADB SAFEGATE.			
DRAWING NUMBER:		SCALE:	SHEET NUMBER:
117A0021		N/A	2 OF 2
REV			F