



LED REIL Runway End Identifier Light  
Voltage/Current, Style C

## Spare Parts

SP\_2086\_C, Rev. A, 2020/09/03

  
**ADB  
SAFEGATE**



## A.0 Disclaimer / Standard Warranty

### CE certification

The equipment listed as CE certified means that the product complies with the essential requirements concerning safety and hygiene. The European directives that have been taken into consideration in the design are available on written request to ADB SAFEGATE.

### ETL certification

The equipment listed as ETL certified means that the product complies with the essential requirements concerning safety and FAA Airfield regulations. The FAA directives that have been taken into consideration in the design are available on written request to ADB SAFEGATE.

### All Products Guarantee

ADB SAFEGATE will correct by repair or replacement per the applicable guarantee above, at its option, equipment or parts which fail because of mechanical, electrical or physical defects, provided that the goods have been properly handled and stored prior to installation, properly installed and properly operated after installation, and provided further that Buyer gives ADB SAFEGATE written notice of such defects after delivery of the goods to Buyer. Refer to the Safety section for more information on Material Handling Precautions and Storage precautions that must be followed.

ADB SAFEGATE reserves the right to examine goods upon which a claim is made. Said goods must be presented in the same condition as when the defect therein was discovered. ADB SAFEGATE further reserves the right to require the return of such goods to establish any claim.

ADB SAFEGATE's obligation under this guarantee is limited to making repair or replacement within a reasonable time after receipt of such written notice and does not include any other costs such as the cost of removal of defective part, installation of repaired product, labor or consequential damages of any kind, the exclusive remedy being to require such new parts to be furnished.

ADB SAFEGATE's liability under no circumstances will exceed the contract price of goods claimed to be defective. Any returns under this guarantee are to be on a transportation charges prepaid basis. For products not manufactured by, but sold by ADB SAFEGATE, warranty is limited to that extended by the original manufacturer. This is ADB SAFEGATE's sole guarantee and warranty with respect to the goods; there are no express warranties or warranties of fitness for any particular purpose or any implied warranties of fitness for any particular purpose or any implied warranties other than those made expressly herein. All such warranties being expressly disclaimed.

### Standard Products Guarantee

Products of ADB SAFEGATE manufacture are guaranteed against mechanical, electrical, and physical defects (excluding lamps) which may occur during proper and normal use for a period of two years from the date of ex-works delivery, and are guaranteed to be merchantable and fit for the ordinary purposes for which such products are made.



#### Note

See your sales order contract for a complete warranty description.

### FAA Certified product installed in the United States and purchased or funded with monies through the Airport Improvement Program (AIP) installations guarantee

ADB SAFEGATE L858 Airfield Guidance Signs are warranted against mechanical and physical defects in design or manufacture for a period of 2 years from date of installation, per FAA AC 150/5345-44 (applicable edition).

ADB SAFEGATE L858(L) Airfield Guidance Signs are warranted against electrical defects in design or manufacture of the LED or LED specific circuitry for a period of 4 years from date of installation, per FAA EB67 (applicable edition).

ADB SAFEGATE LED light fixtures (with the exception of obstruction lighting) are warranted against electrical defects in design or manufacture of the LED or LED specific circuitry for a period of 4 years from date of installation, per FAA EB67 (applicable edition).



## Note

See your sales order contract for a complete warranty description.

---

## Liability

---



### WARNING

Use of the equipment in ways other than described in the catalog leaflet and the manual may result in personal injury, death, or property and equipment damage. Use this equipment only as described in the manual.

---

ADB SAFEGATE cannot be held responsible for injuries or damages resulting from non-standard, unintended uses of its equipment. The equipment is designed and intended only for the purpose described in the manual. Uses not described in the manual are considered unintended uses and may result in serious personal injury, death or property damage.

Unintended uses, includes the following actions:

- Making changes to equipment that have not been recommended or described in this manual or using parts that are not genuine ADB SAFEGATE replacement parts or accessories.
- Failing to make sure that auxiliary equipment complies with approval agency requirements, local codes, and all applicable safety standards if not in contradiction with the general rules.
- Using materials or auxiliary equipment that are inappropriate or incompatible with your ADB SAFEGATE equipment.
- Allowing unskilled personnel to perform any task on or with the equipment.

## © ADB SAFEGATE BV

This manual or parts thereof may not be reproduced, stored in a retrieval system, or transmitted, in any form or by any means, electronic, mechanical, photocopying, recording, nor otherwise, without ADB SAFEGATE BV's prior written consent.

This manual could contain technical inaccuracies or typographical errors. ADB SAFEGATE BV reserves the right to revise this manual from time to time in the contents thereof without obligation of ADB SAFEGATE BV to notify any person of such revision or change. Details and values given in this manual are average values and have been compiled with care. They are not binding, however, and ADB SAFEGATE BV disclaims any liability for damages or detriments suffered as a result of reliance on the information given herein or the use of products, processes or equipment to which this manual refers. No warranty is made that the use of the information or of the products, processes or equipment to which this manual refers will not infringe any third party's patents or rights. The information given does not release the buyer from making their own experiments and tests.

# TABLE OF CONTENTS

<b>1.0 Introduction .....</b>	<b>1</b>
1.1 Runway End Identification Light .....	1
<b>2.0 REIL-C Parts .....</b>	<b>3</b>
2.1 Control Panel Assembly Part Numbers and Ordering Codes .....	4
2.1.1 Light Head Assembly Part Numbers .....	8
2.2 Spare Parts .....	8
<b>A.0 SUPPORT .....</b>	<b>11</b>
A.1 ADB SAFEGATE Website .....	11
A.2 Recycling .....	11
A.2.1 Local Authority Recycling .....	11
A.2.2 ADB SAFEGATE Recycling .....	12



# 1.0 Introduction

The LED REIL is a Runway End Identifier Light with LED array flashing light system that provides a visual indication of the runway threshold to pilots during an approach for landing. The system is composed of two sequenced flashers that operate simultaneously to produce short duration flashes twice a second. Each REIL assembly is composed of a separate LED optical flash head assembly and an individual control cabinet.

The LED REIL system may be operated either by local or remote control. The REIL flash system (style C) operates at low intensity. The system can be powered by a 120/240 Vac power supply or by a 6.6 A or 20 A series circuit.

The LED REIL systems electronic package housed in the control cabinet is the same for both REIL units with some minor variations due to primary/secondary unit design.

## 1.1 Runway End Identification Light

### Compliance with Standards

FAA:	L-849(L) Style A, C or E AC 150/5345-51 (Current Edition) and the FAA Engineering Brief No. 67. ETL Certified.
ICAO:	Annex 14, Vol. 1, para. 5.3.8

### Uses

LED REIL provides a visual indication to pilots of the runway threshold during an approach.

- L-849(L) Style A**
  - Unidirectional, high intensity / one brightness step
- L-849(L) Style C**
  - Unidirectional, low intensity, one brightness step
- L-849(L) Style E**
  - Unidirectional, three brightness steps

### Operating Conditions

Temperature:	-40 °F to +131 °F (-40 °C to +55 °C)
Humidity:	0 to 100% (including conditions where condensation takes place in the form of water or frost)
Altitude:	0 to 10,000 ft (3,000 m)
Wind:	Velocities up to 150 knots
Exposure:	Withstands windblown rain, sand, dust particles, and a salt-laden atmosphere

### Power Supply

The LED REIL system operates from a 240 VAC (2-wire) or 120/240 VAC (3-wire),  $\pm 10\%$ , 50/60 Hz power supply. The system can also operate from a series lighting circuit using a 6.6 A/6.6 A or 20 A/ 6.6 A L-830/L-831 isolation transformer at each unit.

#### Maximum Power Requirements

Style	Each Unit	Total
Voltage-driven		
A/E	171 VA	342 VA
C	45 VA	90 VA
Current-driven		

Maximum Power Requirements		
Style	Each Unit	Total
A/E	108 VA <sup>1</sup>	216 VA <sup>2</sup>
C <sup>3</sup>	53 VA <sup>4</sup>	106 VA <sup>2</sup>
C <sup>5</sup>	86 VA <sup>6</sup>	172 VA <sup>2</sup>

Notes

- <sup>1</sup> Use 200 W isolation transformer each unit
- <sup>2</sup> This is total CCR load and includes isolation transformer losses.
- <sup>3</sup> Without current sensing
- <sup>4</sup> Use 30/45 W isolation transformer each unit
- <sup>5</sup> With current sensing
- <sup>6</sup> Use 100 W isolation transformer each unit



## 2.0 REIL-C Parts

To order parts, call ADB Safegate Customer Service or your local representative. Use the parts lists, and the accompanying illustration, to describe and locate parts correctly.

### Ordering Code

REIL / X X X X 0 X X

#### Style

A = High-intensity, one brightness step  
C = Low-intensity, one brightness step  
E = Three brightness steps

#### Input Power

1 = Current-driven<sup>1</sup>  
2 = Voltage-driven

#### Current Sensing Option<sup>2</sup>

0 = Without current sensing<sup>3</sup>  
1 = With current sensing

#### Flash Head Mounting

0 = Integrated with enclosure (Style A, C, or E)  
1 = Separate mounting on a 2" EMT (Style C only)

#### Enclosure Mounting

1 = Single leg  
2 = Two legs

0

#### Enclosure Type

1 = Steel (Painted Aviation Orange)  
2 = Stainless Steel (Not ETL Certified)

#### LED Configuration

0 = Style C  
1 = Style A/E (48 LEDs)

#### Note:

- <sup>1</sup> The current-driven REIL is only available with the current-sensing option. A current-driven REIL cannot be ordered without current sensing.
- <sup>2</sup> The current sensing option provides ON/OFF control for Style A, Style C or 3-step intensity control for Style E of the REIL system depending on the current level in the series lighting circuit. The current-driven (powered by a CCR) doesn't require a separate isolation transformer – The input current from the isolation transformer that powers the Primary cabinet is also used for current sensing control. The current sensing input of a voltage-driven REIL can be connected to 6.6 A or 20 A series circuits with an appropriate 6.6/6.6 A or 20/6.6 A isolation transformer.
- <sup>3</sup> The without current sensing option is only available with the voltage driven REIL.

## 2.1 Control Panel Assembly Part Numbers and Ordering Codes

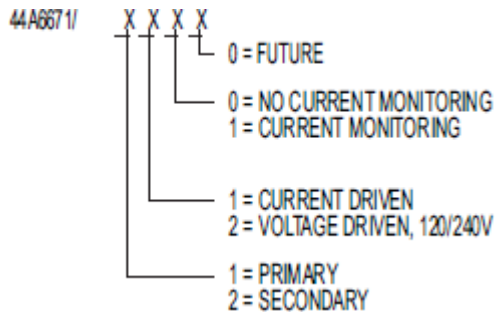


Figure 1: REIL Assembly

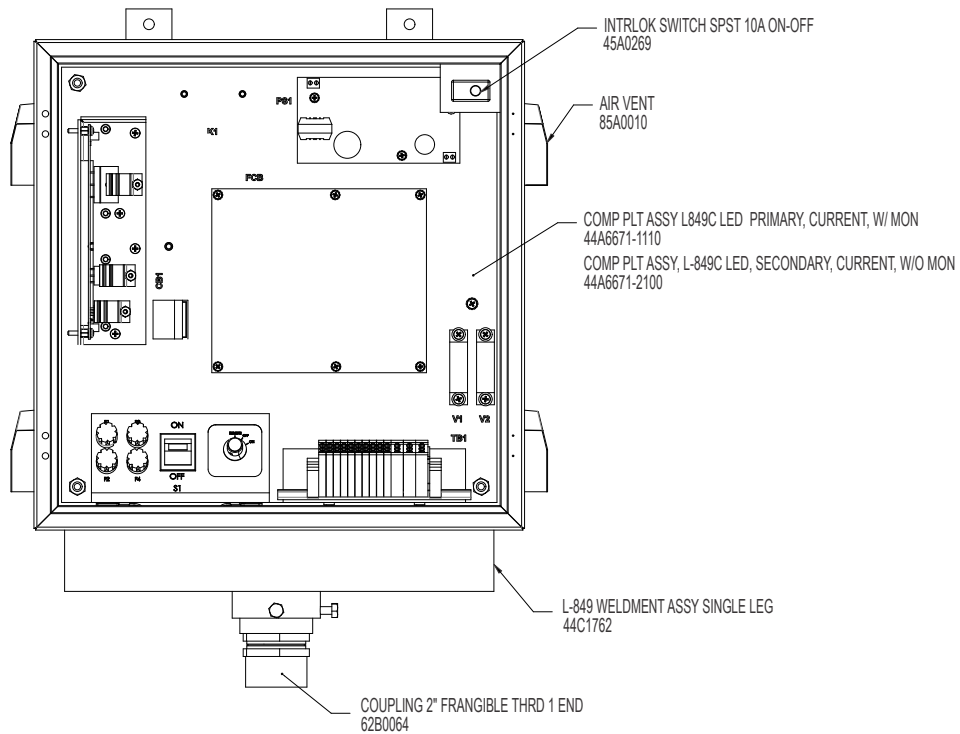


Figure 2: REIL Assembly 2-pole

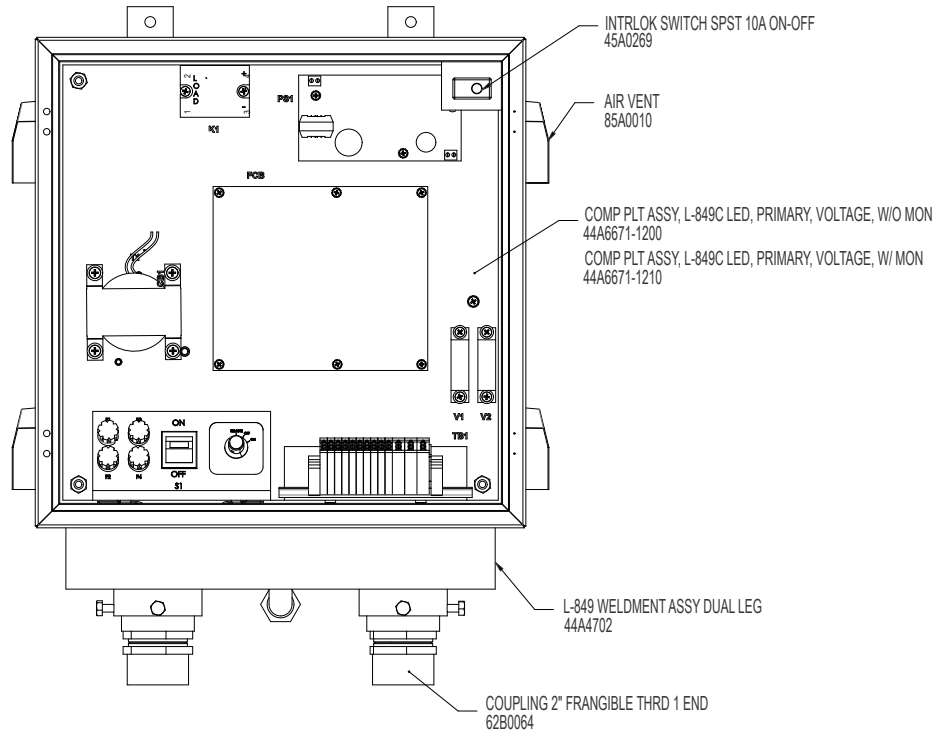
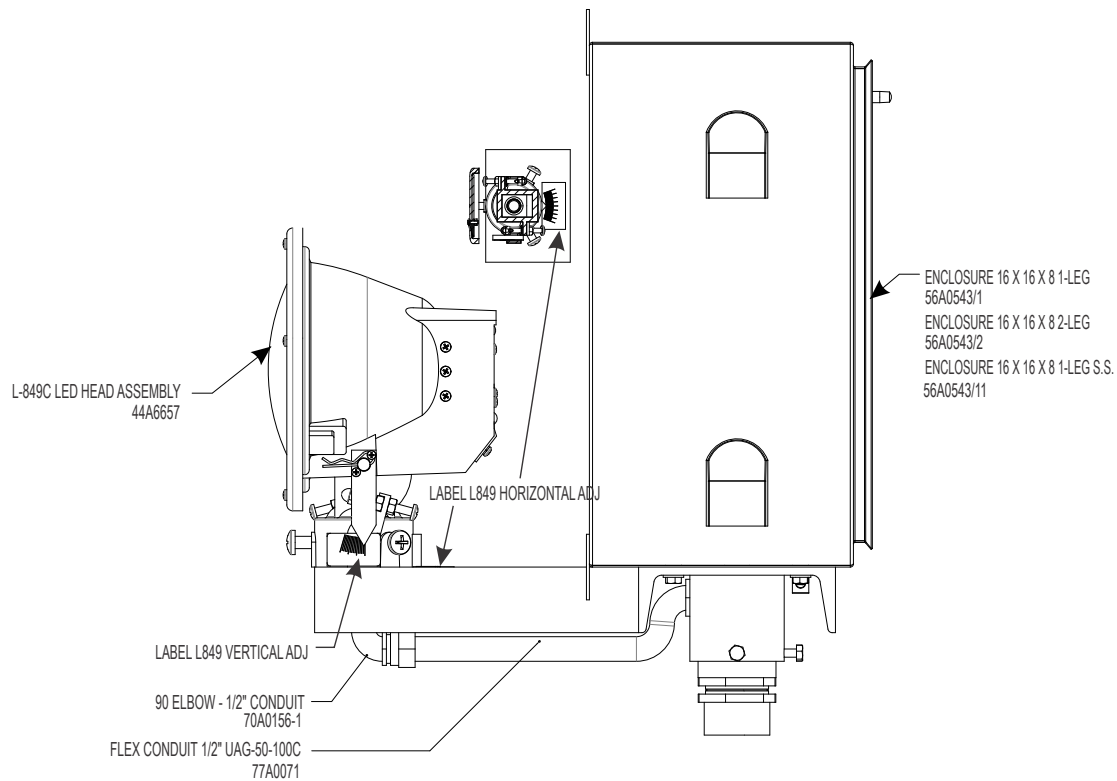


Figure 3: REIL Side View



**Note**  
The same control panel is used in each individual control cabinet.

Figure 4: Component Panel (current)

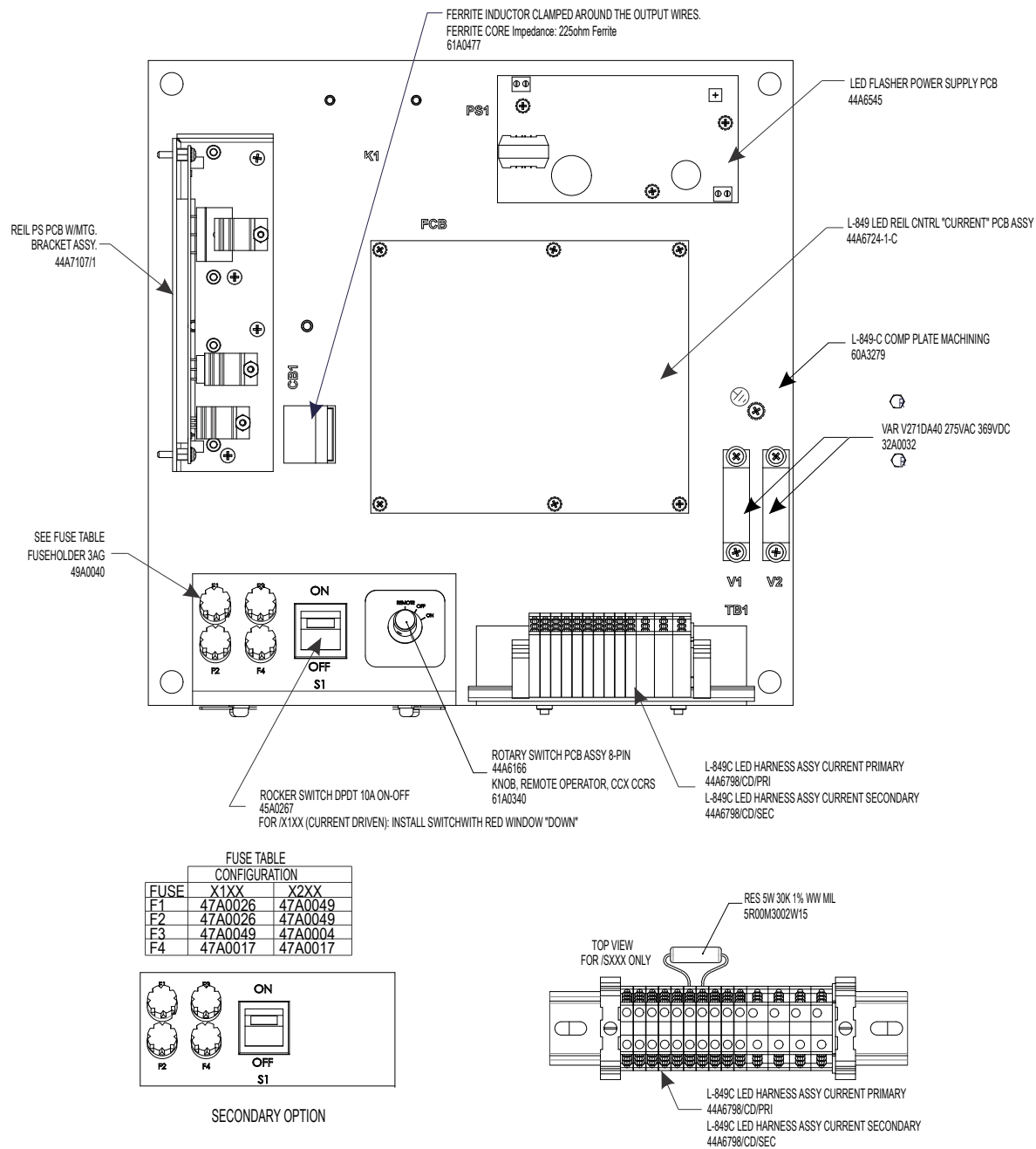
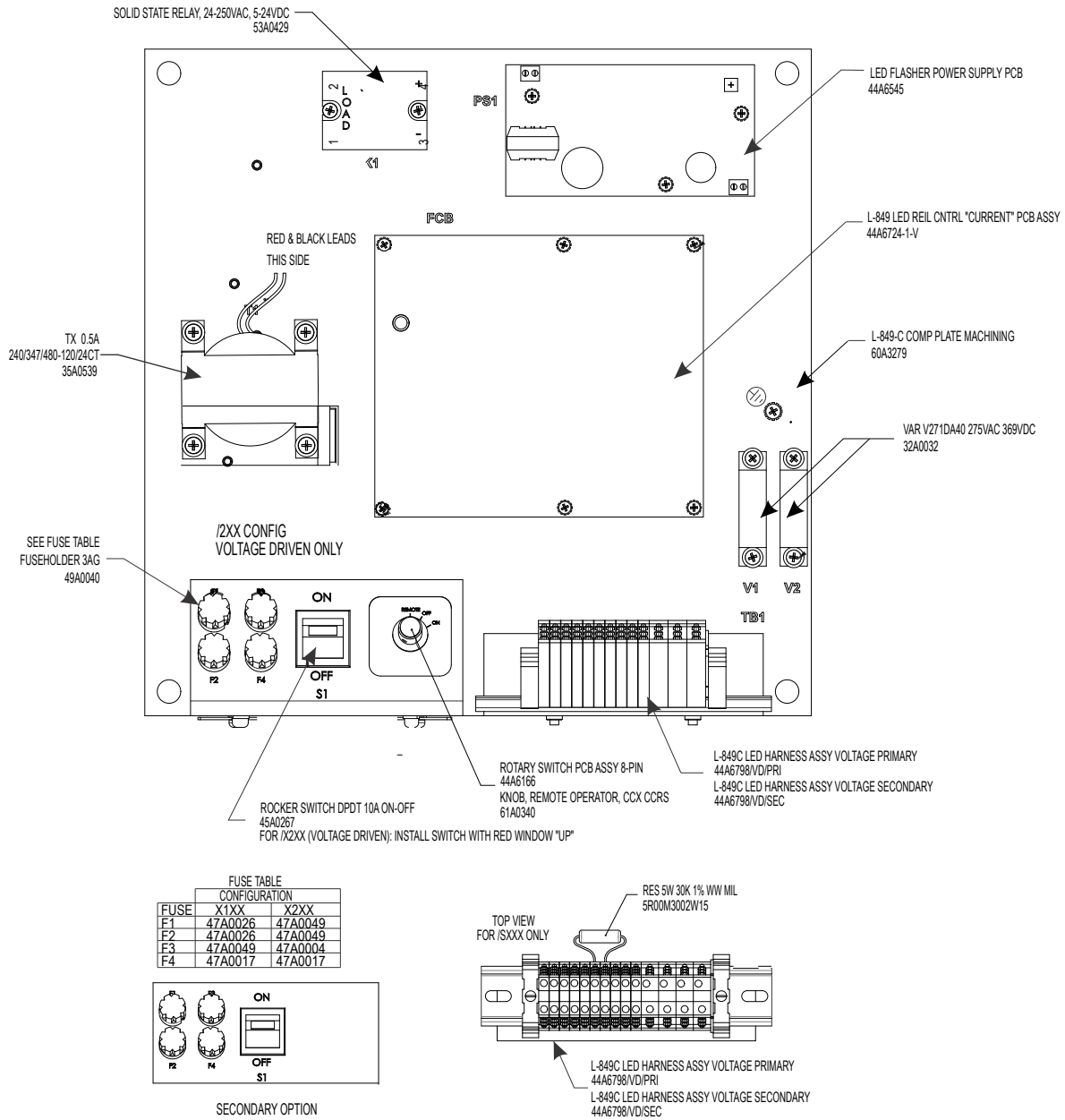


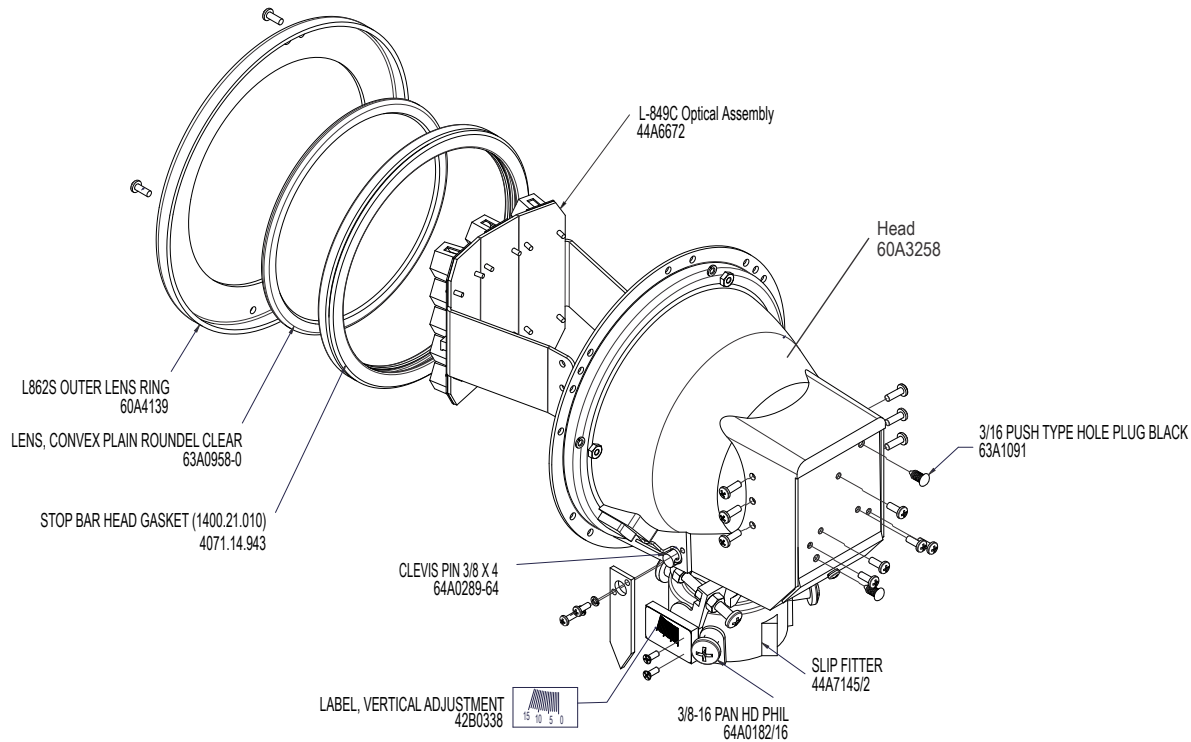
Figure 5: Component Panel (voltage)



### 2.1.1 Light Head Assembly Part Numbers

See spare parts list for detailed description of parts.

**Figure 6: Light Head Assembly**



## 2.2 Spare Parts

**Table 1: Spare Parts List for Voltage Powered Units**

Part Number	Description	Quantity	Note
44A6724/1/V	Control Board Assembly	1	A
47A0078	Fuse, Panel, F1 and F2, 4A, SB	2	
47A0004	Fuse, Panel, F3, 2A, SB	1	
53A0429	Solid-State Relay, 24-250V AC, 5-24V DC	1	
32A0032	Lightning Arrestor 275Vac	2	
44A6545	LED Flasher Power Supply PCB	1	A
44A6672	LED Optical Assembly (units with 9 LEDs)	1	A
94A0729	LED Optical Assembly replacement kit (units with 15 LEDs)	1	A
69A2964	Head Assembly Door	1	A
47A0049	Fuse 2A 250V SLO BLO	2	
62B0064	2-inch Frangible coupling	1 OR 2	
44A7145/2	Slip Fitter	1	
47A0017	Fuse, Control Board, F1, 1A, SB	1	
47A0215	Fuse, Flasher Power Supply Board, F1, 2A, SB	1	

**Table 1: Spare Parts List for Voltage Powered Units (continued)**

Part Number	Description	Quantity	Note
47A0017	Fuse, Panel, F4, 1A, SB	1	
45A0269	Interlock Switch, Door, SPST, 10A	1	
Note A: Individual parts not available must be purchased as complete assembly			

**Table 2: Spare Parts List for Current Powered Units**

Part Number	Description	Quantity	Note
44A6724/1/C	Control Board Assembly	1	A
47A0026	Fuse, Panel, F1 and F2, 10A, SB	2	
47A0049	Fuse, Panel, F3, 2A, SB	1	
44A7107-1	Power Supply Assembly, PS5	1	A
32A0032	Lightning Arrestor 275Vac	2	
44A6545	LED Flasher Power Supply PCB	1	A
44A6672	LED Optical Assembly (units with 9 LEDs)	1	A
94A0729	LED Optical Assembly replacement kit (units with 15 LED assemblies)	1	A
69A2964	Head Assembly Door	1	A
47A0049	Fuse 2A 250V SLO BLO	2	
62B0064	2-inch Frangible coupling	1 OR 2	
44A7145/2	Slip Fitter	1	
47A0017	Fuse, Control Board, F1, 1A, SB	1	
47A0215	Fuse, Flasher Power Supply Board, F1, 2A, SB	1	
47A0017	Fuse, Panel, F4, 1A, SB	1	
45A0269	Interlock Switch, Door, SPST, 10A	1	
Note A: Individual parts not available must be purchased as complete assembly			





## Appendix A: SUPPORT

Our experienced engineers are available for support and service at all times, 24 hour/7 days a week. They are part of a dynamic organization making sure the entire ADB SAFEGATE is committed to minimal disturbance for airport operations.

### ADB SAFEGATE Support

#### Live Technical Support - Americas

If at any time you have a question or concern about your product, just contact ADB SAFEGATE's technical service department. Trained in all areas of system issues, troubleshooting, quality control and technical assistance, our highly experienced Technical support specialists are available 24 hours a day, seven days a week to provide assistance over the phone.

**ADB SAFEGATE Americas Technical Service & Support (US & Canada): +1-800-545-4157**

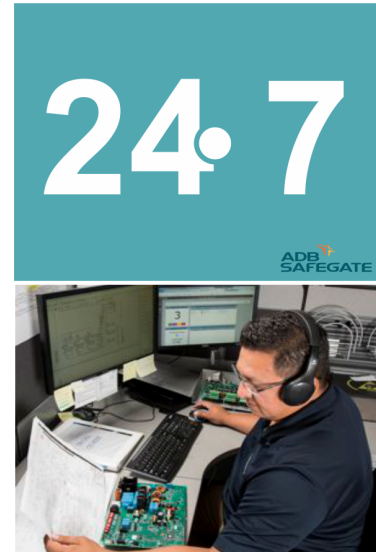
**ADB SAFEGATE Americas Technical Service & Support (International): +1-614-861-1304**

During regular business hours, you can also Chat with a Service Technician. We look forward to working with you!

#### Before You Call

When you have an airfield lighting or system control system problem it is our goal to support airfield maintenance staff as quickly as possible. To support this effort we ask that you have the following information ready before calling.

- The *airport code*
- If not with an airport, then company name (prefer customer id number)
- Contact phone number and email address
- Product with part number preferable or product number
- Have you reviewed the product's manual and troubleshooting guide
- Do you have a *True RMS* meter available (and any other necessary tools)
- Be located with the product ready to troubleshoot



For more information, see [www.adbsafegate.com](http://www.adbsafegate.com), or contact ADB SAFEGATE Support via email at [support@adbsafegate.com](mailto:support@adbsafegate.com) or

Brussels: +32 2 722 17 11

Rest of Europe: +46 (0) 40 699 17 40

Americas: +1 614 861 1304. Press 3 for technical service or press 4 for sales support.

China: +86 (10) 8476 0106

### A.1 ADB SAFEGATE Website

The ADB SAFEGATE website, [www.adbsafegate.com](http://www.adbsafegate.com), offers information regarding our airport solutions, products, company, news, links, downloads, references, contacts and more.

### A.2 Recycling

#### A.2.1 Local Authority Recycling

The disposal of ADB SAFEGATE products is to be made at an applicable collection point for the recycling of electrical and electronic equipment. The correct disposal of equipment prevents any potential negative consequences for the environment and human health, which could otherwise be caused by inappropriate waste handling. The recycling of materials helps to conserve natural resources. For more detailed information about recycling of products, contact your local authority city office.

### A.2.2 ADB SAFEGATE Recycling

ADB SAFEGATE is fully committed to environmentally-conscious manufacturing with strict monitoring of our own processes as well as supplier components and sub-contractor operations. ADB SAFEGATE offers a recycling program for our products to all customers worldwide, whether or not the products were sold within the EU.

ADB SAFEGATE products and/or specific electrical and electronic component parts which are fully removed/separated from any customer equipment and returned will be accepted for our recycling program.

All items returned must be clearly labeled as follows:

- For *ROHS/WEEE* Recycling
- Sender contact information (Name, Business Address, Phone number).
- Main Unit Serial Number.

ADB SAFEGATE will continue to monitor and update according for any future requirements for *EU directives* as and when *EU member states* implement new *regulations* and or *amendments*. It is our aim to maintain our *compliance plan* and assist our customers.

## Company Addresses

ADB SAFEGATE	ADB SAFEGATE, Belgium: Leuvensesteenweg 585, B-1930 Zaventem Belgium
Contact: Tel.: +32 2 722 17 11, Fax: +32 2 722 17 64	Email: <a href="mailto:marketing@adbsafegate.com">marketing@adbsafegate.com</a> Internet: <a href="http://www.adbsafegate.com">www.adbsafegate.com</a>
Americas LLC	ADB SAFEGATE, Americas: 977 Gahanna Parkway, Columbus, OH 43230 USA
Contact: Tel.: +1 (614) 861 1304, Fax: +1 (614) 864 2069	Email: <a href="mailto:sales.us@adbsafegate.com">sales.us@adbsafegate.com</a> Internet: <a href="http://www.adbsafegate.com">www.adbsafegate.com</a>
ADB SAFEGATE Sweden AB	ADB SAFEGATE, Sweden: Djurhagegatan 19 SE-213 76 Malmö Sweden
Contact: Tel.: +46 (0)40 699 17 00, Fax: +46 (0)40 699 17 30	Email: <a href="mailto:marketing@adbsafegate.com">marketing@adbsafegate.com</a> Internet: <a href="http://www.adbsafegate.com">www.adbsafegate.com</a>
ADB SAFEGATE Airfield Technologies Ltd. China	ADB SAFEGATE, China: Unit 603, D Block, CAMIC International Convention Center, No 3, Hua Jia Di East road, ChaoYang district, Beijing 100102 P.R. China
Contact: Tel.: +86 (10) 8476 0106, Fax: +86 (10) 8476 0090	Email: <a href="mailto:china@safegate.com">china@safegate.com</a> Internet: <a href="http://www.adbsafegate.com">www.adbsafegate.com</a>
ADB SAFEGATE Germany GmbH	ADB SAFEGATE Germany GmbH, Mannheim: Konrad-Zuse-Ring 6, D-68163 Mannheim Germany
Contact: Tel.: +49 (621) 87 55 76-0, Fax: +49 (621) 87 55 76-55	Email: <a href="mailto:marketing@adbsafegate.com">marketing@adbsafegate.com</a> Internet: <a href="http://www.adbsafegate.com">www.adbsafegate.com</a>



**Powering Your Airport Performance  
from Approach to Departure**

**[adbsafegate.com](https://adbsafegate.com)**

Copyright © ADB SAFEGATE, all rights reserved

