



L-852T(L) / ITEL-L

LED In-pavement Taxiway Edge Light, Medium-Intensity

Spare Parts

SP_2060, Rev. A, 2020/03/11


**ADB
SAFEGATE**

A.0 Disclaimer / Standard Warranty

CE certification

The equipment listed as CE certified means that the product complies with the essential requirements concerning safety and hygiene. The European directives that have been taken into consideration in the design are available on written request to ADB SAFEGATE.

ETL certification

The equipment listed as ETL certified means that the product complies with the essential requirements concerning safety and FAA Airfield regulations. The FAA directives that have been taken into consideration in the design are available on written request to ADB SAFEGATE.

All Products Guarantee

ADB SAFEGATE will correct by repair or replacement per the applicable guarantee above, at its option, equipment or parts which fail because of mechanical, electrical or physical defects, provided that the goods have been properly handled and stored prior to installation, properly installed and properly operated after installation, and provided further that Buyer gives ADB SAFEGATE written notice of such defects after delivery of the goods to Buyer. Refer to the Safety section for more information on Material Handling Precautions and Storage precautions that must be followed.

ADB SAFEGATE reserves the right to examine goods upon which a claim is made. Said goods must be presented in the same condition as when the defect therein was discovered. ADB SAFEGATE further reserves the right to require the return of such goods to establish any claim.

ADB SAFEGATE's obligation under this guarantee is limited to making repair or replacement within a reasonable time after receipt of such written notice and does not include any other costs such as the cost of removal of defective part, installation of repaired product, labor or consequential damages of any kind, the exclusive remedy being to require such new parts to be furnished.

ADB SAFEGATE's liability under no circumstances will exceed the contract price of goods claimed to be defective. Any returns under this guarantee are to be on a transportation charges prepaid basis. For products not manufactured by, but sold by ADB SAFEGATE, warranty is limited to that extended by the original manufacturer. This is ADB SAFEGATE's sole guarantee and warranty with respect to the goods; there are no express warranties or warranties of fitness for any particular purpose or any implied warranties of fitness for any particular purpose or any implied warranties other than those made expressly herein. All such warranties being expressly disclaimed.

Standard Products Guarantee

Products of ADB SAFEGATE manufacture are guaranteed against mechanical, electrical, and physical defects (excluding lamps) which may occur during proper and normal use for a period of two years from the date of ex-works delivery, and are guaranteed to be merchantable and fit for the ordinary purposes for which such products are made.



Note

See your sales order contract for a complete warranty description.

FAA Certified product installed in the United States or in US Military installations guarantee

ADB SAFEGATE L858 Airfield Guidance Signs are warranted against mechanical and physical defects in design or manufacture for a period of 2 years from date of installation, per FAA AC 150/5345-44 (applicable edition).

ADB SAFEGATE L858(L) Airfield Guidance Signs are warranted against electrical defects in design or manufacture of the LED or LED specific circuitry for a period of 4 years from date of installation, per FAA EB67 (applicable edition).

ADB SAFEGATE LED light fixtures (with the exception of obstruction lighting) are warranted against electrical defects in design or manufacture of the LED or LED specific circuitry for a period of 4 years from date of installation, per FAA EB67 (applicable edition).



Note

See your sales order contract for a complete warranty description.

Liability



WARNING

Use of the equipment in ways other than described in the catalog leaflet and the manual may result in personal injury, death, or property and equipment damage. Use this equipment only as described in the manual.

ADB SAFEGATE cannot be held responsible for injuries or damages resulting from non-standard, unintended uses of its equipment. The equipment is designed and intended only for the purpose described in the manual. Uses not described in the manual are considered unintended uses and may result in serious personal injury, death or property damage.

Unintended uses, includes the following actions:

- Making changes to equipment that have not been recommended or described in this manual or using parts that are not genuine ADB SAFEGATE replacement parts or accessories.
- Failing to make sure that auxiliary equipment complies with approval agency requirements, local codes, and all applicable safety standards if not in contradiction with the general rules.
- Using materials or auxiliary equipment that are inappropriate or incompatible with your ADB SAFEGATE equipment.
- Allowing unskilled personnel to perform any task on or with the equipment.

© ADB SAFEGATE BV

This manual or parts thereof may not be reproduced, stored in a retrieval system, or transmitted, in any form or by any means, electronic, mechanical, photocopying, recording, nor otherwise, without ADB SAFEGATE BV's prior written consent.

This manual could contain technical inaccuracies or typographical errors. ADB SAFEGATE BV reserves the right to revise this manual from time to time in the contents thereof without obligation of ADB SAFEGATE BV to notify any person of such revision or change. Details and values given in this manual are average values and have been compiled with care. They are not binding, however, and ADB SAFEGATE BV disclaims any liability for damages or detriments suffered as a result of reliance on the information given herein or the use of products, processes or equipment to which this manual refers. No warranty is made that the use of the information or of the products, processes or equipment to which this manual refers will not infringe any third party's patents or rights. The information given does not release the buyer from making their own experiments and tests.

TABLE OF CONTENTS

1.0 L-852T(L) / ITEL-L	1
1.1 ITEL-L Product Introduction	1
1.1.1 LED In-pavement Taxiway Edge Light	1
2.0 ITEL Parts	3
2.1 ITEL Spare Parts	3
2.2 Illustrated Parts List	4
A.0 SUPPORT	7
A.1 ADB SAFEGATE website	7
A.2 Recycling	8
A.2.1 Local authority recycling	8
A.2.2 ADB SAFEGATE recycling	8

1.0 L-852T(L) / ITEL-L

The ITEL-L LED in-pavement fixture can be used on taxiway edge, taxiway intersection and helipad applications. These fixtures have an average LED life of 100,000 hours under high-intensity conditions and more than 200,000 hours under actual operating conditions, resulting in significant reduction or even elimination of ongoing maintenance costs and periodic re-lamping expenses. The ITEL-L fixtures operate on either 3- or 5-step CCRs.

1.1 ITEL-L Product Introduction

The ITEL-L LED in-pavement fixture can be used on taxiway edge, taxiway intersection and helipad applications. These fixtures have an average LED life of 100,000 hours under high-intensity conditions and more than 200,000 hours under actual operating conditions, resulting in significant reduction or even elimination of ongoing maintenance costs and periodic re-lamping expenses. The ITEL-L fixtures operate on either 3- or 5-step CCRs.

1.1.1 LED In-pavement Taxiway Edge Light

Compliance with Standards

FAA:	L-852T(L) AC 150/5345-46 (Current Edition) and the FAA Engineering Brief No. 67. ETL Certified.
ICAO:	Annex 14, Vol. I, Ed. 6, para. 5.3.18.
CE:	Complies with the requirement of the EMC Directive 2004/108/EC.

Uses

FAA L-852T(L)

- Taxiway edge
- Heliports

Electrical Supply

6.6 A through an L-830-1 (for 60 Hz) or L-831-1 (for 50 Hz) 30/45 W isolation transformer or an L-830-17 20/25 W isolation transformer. The ITEL fixture is designed to work with any IEC- or FAA-compliant transformer up to 100 W without affecting the performance or lifetime of the light fixture or transformer. See data sheet 3033 for more details on recommended isolation transformers specified below.

The total CCR load shown in the following table represents the total VA load imposed on the regulator and accounts for power factor and transformer load.

ITEL Fixture	Fixture Load	Isolation Trans-former	Heater On/Off	Trans-former Load	Total CCR Load
With arctic option	19.5 VA	30/45 W	Off	6 VA	25.5 VA
	44 VA	30/45 W	On	9 VA	53 VA
Without arctic option	19.5 VA	20/25 W	N/A	5 VA	24.5 VA

2.0 ITEL Parts

Ordering Code

LED Color

8 = Yellow
9 = White
A = Green
B = Red
C = L-852T(L) Aviation Blue¹

Mounting

1 = 12-inch fixture for standard L-868B light base¹
2 = 12-inch fixture for standard L-867B light base¹
3 = 8-inch fixture for ICAO light base
4 = 8-inch fixture with L-868B adapter ring
6 = 8-inch fixture with L-867B adapter ring, bottom mounted
7 = 8-inch fixture with L868B snow plow ring
8 = 8-inch fixture with 11-inch adapter ring

Power

1 = 60 Hz¹
2 = 50 Hz²
3 = 60 Hz with monitoring
4 = 50 Hz with monitoring²

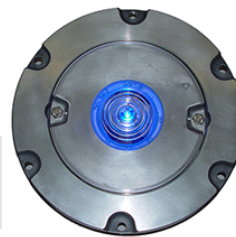
Arctic Option

0 = Without arctic option
1 = With arctic option

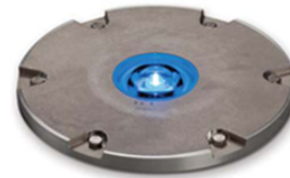
Notes

¹ ETL Certified
² Any 50 Hz option carries the CE Mark

ITEL - X X X X



8-in ITEL-L
with adapter ring



12-in ITEL-L

2.1 ITEL Spare Parts

Table 1: Spare Parts

Description	Part No.
Cable clamp, inner cover	4071.50.090
Cable clamp, with monitoring	62A2169
Cord set, L-823	44A7387-10
Cord set, 4-pin, monitoring	73A0139
Grommet, cord set (2)	63A1014
LED light engine, L-852T(L), blue, w/out arctic kit ¹	44A7177-10
LED light engine, L-852T(L), blue, with arctic kit ¹	44A7177-11
LED PCB, blue, 50 Hz, with monitoring	44A7197-50-1
LED PCB, blue, 50 Hz, without monitoring	44A7197-50-0
LED PCB, blue, 60 Hz, with monitoring	44A7197-60-1
LED PCB, blue, 60 Hz, without monitoring	44A7197-60-0
Lens	63A1071
Lens, support plate	4071.76.020
Lens gasket, flat protection	61A0539
Lens gasket, molded	4071.76.041

Table 1: Spare Parts (continued)

Description	Part No.
O-ring, inner cover seal	63A1285
O-ring, pressure release screw	63B0267-011
Pressure release screw	60A2602
Anti-rotation Pin	4071.50.120
ITEL LED PS PCB ASSY 60HZ W/MONITORING	44A6596
ITEL LED PS PCB ASSY 60HZ W/O MONITORING	44A6596-2
PCB ASSY, APS ITEL PWR SUPPLY	44A6908-3

Notes

¹ ¹ When replacing blue LED light engines in fixtures shipped before June 2012, please consult the manual or call the ADB SAFEGATE Sales Department.

2.2 Illustrated Parts List

Figure 1: ITEL Pan Assembly

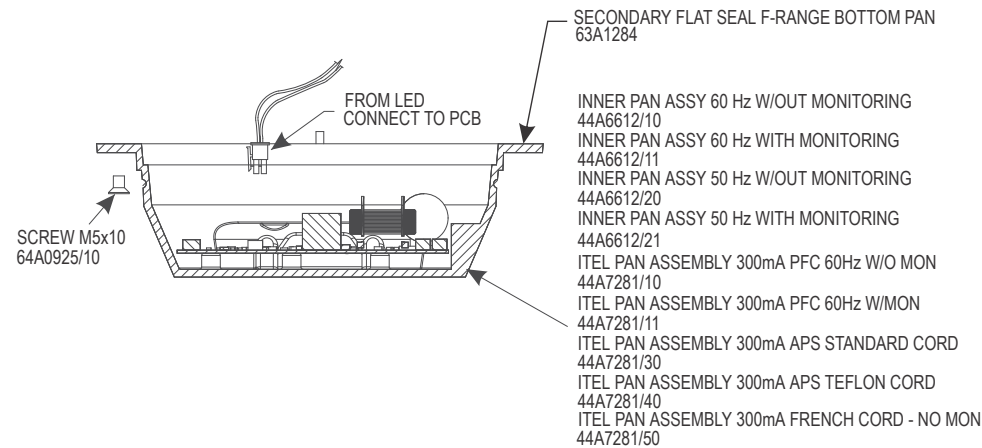


Figure 2: ITEL Pan Assembly with molded cord set

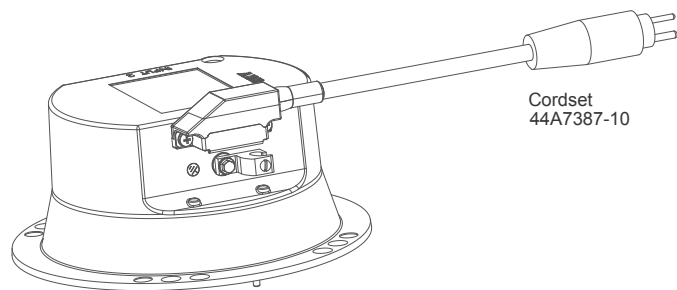


Figure 3: Top Cover without heater

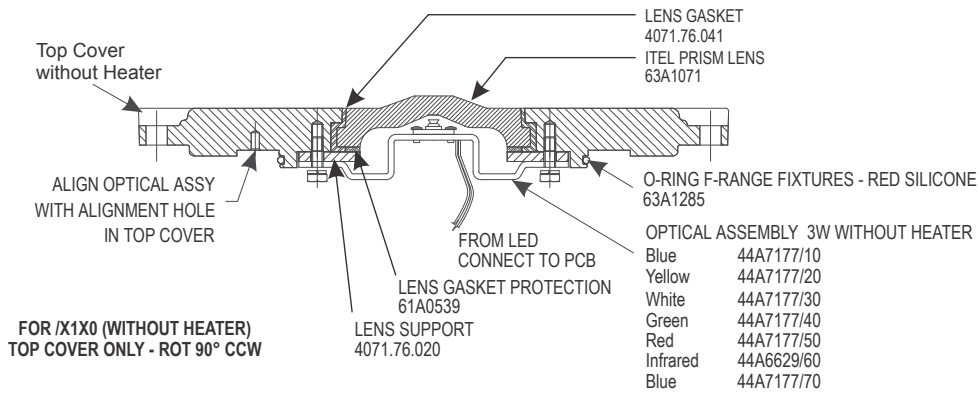


Figure 4: Top Cover with heater

FOR /X1X1 (WITH CURRENT HEATER)
TOP COVER ONLY - ROT 90° CCW

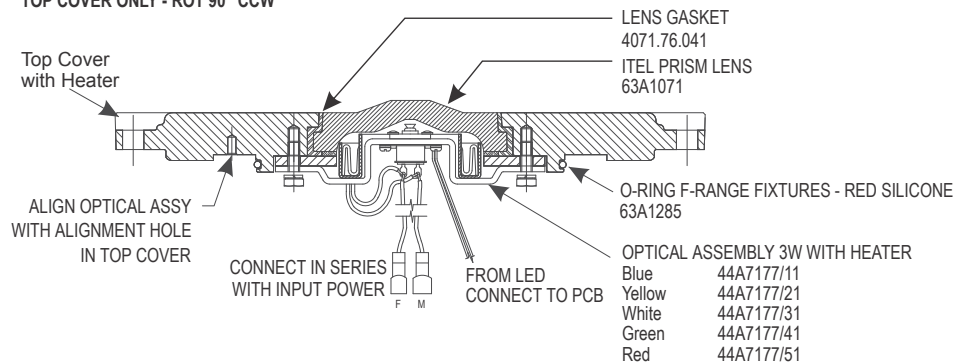


Figure 5: Snow Plow Ring

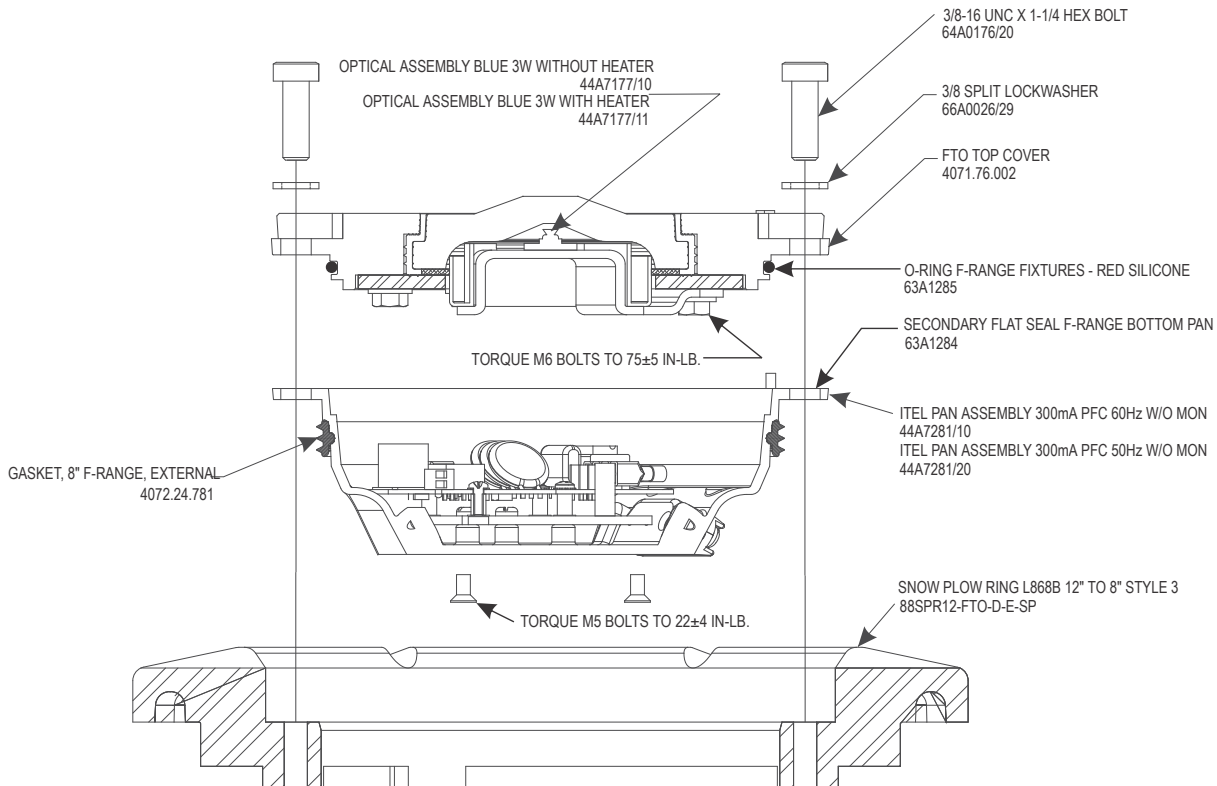


Figure 6: Adapter Ring 10.65"

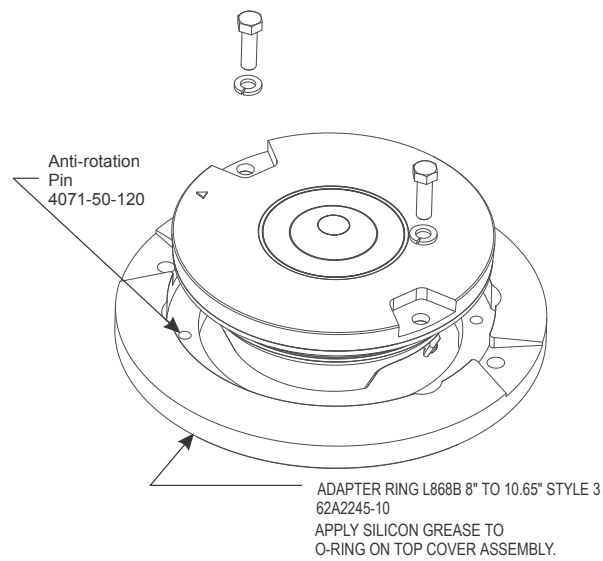
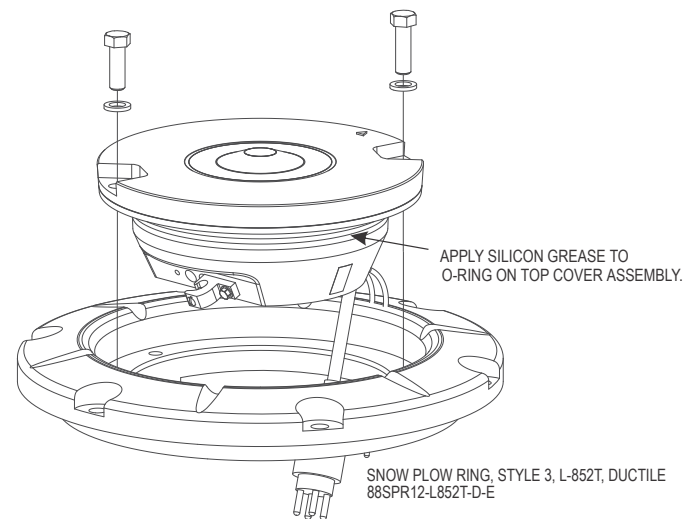


Figure 7: Adapter Ring 12"



Appendix A: SUPPORT

Our experienced engineers are available for support and service at all times, 24 hour/7 days a week. They are part of a dynamic organization making sure the entire ADB SAFEGATE is committed to minimal disturbance for airport operations.

ADB SAFEGATE Support

Live Technical Support - Americas

If at any time you have a question or concern about your product, just contact ADB SAFEGATE's technical service department. Trained in all areas of system issues, troubleshooting, quality control and technical assistance, our highly experienced Technical support specialists are available 24 hours a day, seven days a week to provide assistance over the phone.

ADB SAFEGATE Americas Technical Service & Support (US & Canada): +1-800-545-4157

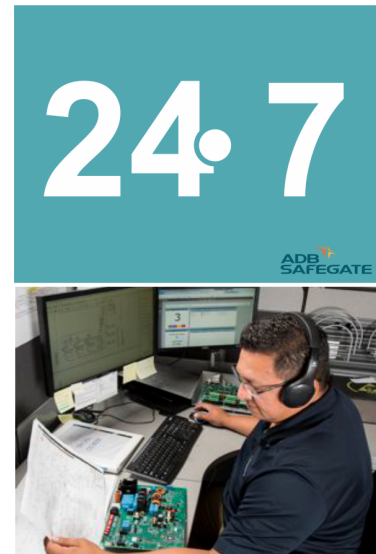
ADB SAFEGATE Americas Technical Service & Support (International): +1-614-861-1304

During regular business hours, you can also Chat with a Service Technician. We look forward to working with you!

Before You Call

When you have an airfield lighting or system control system problem it is our goal to support airfield maintenance staff as quickly as possible. To support this effort we ask that you have the following information ready before calling.

- The *airport code*
- If not with an airport, then company name (prefer customer id number)
- Contact phone number and email address
- Product with part number preferable or product number
- Have you reviewed the product's manual and troubleshooting guide
- Do you have a *True RMS* meter available (and any other necessary tools)
- Be located with the product ready to troubleshoot



Note

For more information, see www.adbsafegate.com, or contact ADB SAFEGATE Support via email at support@adbsafegate.com or

Brussels: +32 2 722 17 11

Rest of Europe: +46 (0) 40 699 17 40

Americas: +1 614 861 1304. Press 3 for technical service or press 4 for sales support.

China: +86 (10) 8476 0106

A.1 ADB SAFEGATE website

The ADB SAFEGATE website, www.adbsafegate.com, offers information regarding our airport solutions, products, company, news, links, downloads, references, contacts and more.

A.2 Recycling

A.2.1 Local authority recycling

The disposal of ADB SAFEGATE products is to be made at an applicable collection point for the recycling of electrical and electronic equipment. The correct disposal of equipment prevents any potential negative consequences for the environment and human health, which could otherwise be caused by inappropriate waste handling. The recycling of materials helps to conserve natural resources. For more detailed information about recycling of products, contact your local authority city office.

A.2.2 ADB SAFEGATE recycling

ADB SAFEGATE is fully committed to environmentally-conscious manufacturing with strict monitoring of our own processes as well as supplier components and sub-contractor operations. ADB SAFEGATE offers a recycling program for our products to all customers worldwide, whether or not the products were sold within the EU.

ADB SAFEGATE products and/or specific electrical and electronic component parts which are fully removed/separated from any customer equipment and returned will be accepted for our recycling program.

All items returned must be clearly labelled as follows:

- For *ROHS/WEEE* Recycling
- Sender contact information (Name, Business Address, Phone number).
- Main Unit Serial Number.

ADB SAFEGATE will continue to monitor and update according for any future requirements for *EU directives* as and when *EU member states* implement new *regulations* and or *amendments*. It is our aim to maintain our *compliance plan* and assist our customers.

Company Addresses

ADB SAFEGATE	ADB SAFEGATE, Belgium: Leuvensesteenweg 585, B-1930 Zaventem Belgium
Contact: Tel.: +32 2 722 17 11, Fax: +32 2 722 17 64	Email: marketing@adbsafegate.com Internet: www.adbsafegate.com
Americas LLC	ADB SAFEGATE, Americas: 977 Gahanna Parkway, Columbus, OH 43230 USA
Contact: Tel.: +1 (614) 861 1304, Fax: +1 (614) 864 2069	Email: sales.us@adbsafegate.com Internet: www.adbsafegate.com
ADB SAFEGATE Sweden AB	ADB SAFEGATE, Sweden: Djurhagegatan 19 SE-213 76 Malmö Sweden
Contact: Tel.: +46 (0)40 699 17 00, Fax: +46 (0)40 699 17 30	Email: marketing@adbsafegate.com Internet: www.adbsafegate.com
ADB SAFEGATE Airfield Technologies Ltd. China	ADB SAFEGATE, China: Unit 603, D Block, CAMIC International Convention Center, No 3, Hua Jia Di East road, ChaoYang district, Beijing 100102 P.R. China
Contact: Tel.: +86 (10) 8476 0106, Fax: +86 (10) 8476 0090	Email: china@safegate.com Internet: www.adbsafegate.com
ADB SAFEGATE Germany GmbH	ADB SAFEGATE Germany GmbH, Mannheim: Konrad-Zuse-Ring 6, D-68163 Mannheim Germany
Contact: Tel.: +49 (621) 87 55 76-0, Fax: +49 (621) 87 55 76-55	Email: marketing@adbsafegate.com Internet: www.adbsafegate.com



**Powering Your Airport Performance
from Approach to Departure**

adbsafegate.com

Copyright © ADB SAFEGATE, all rights reserved

