

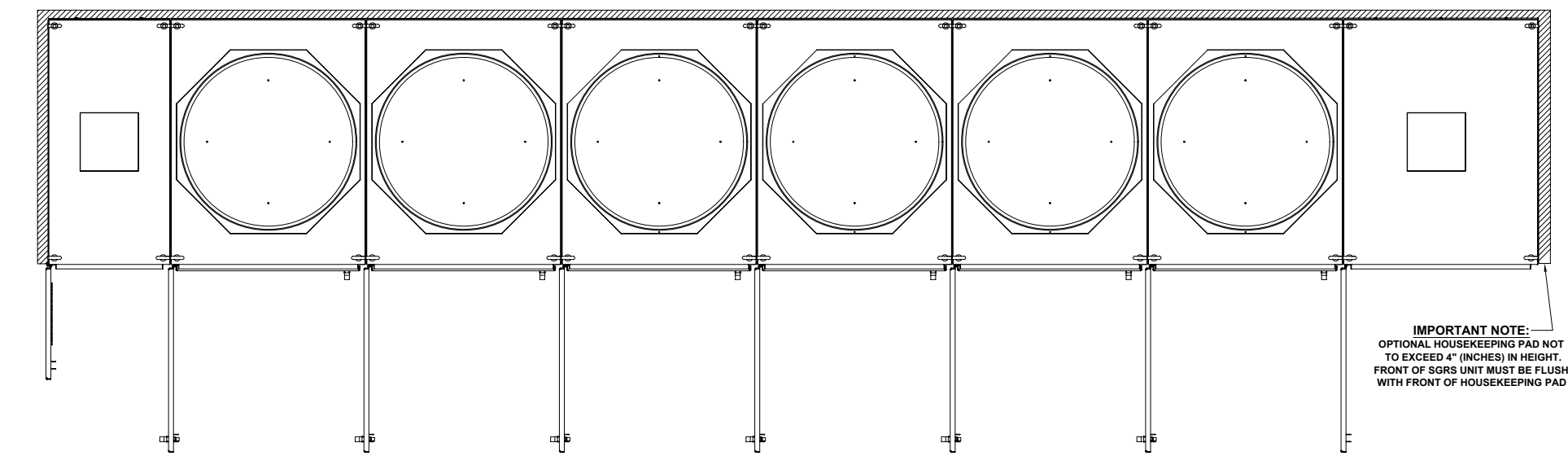


Sample Ferroresonant SwitchGear Drawings

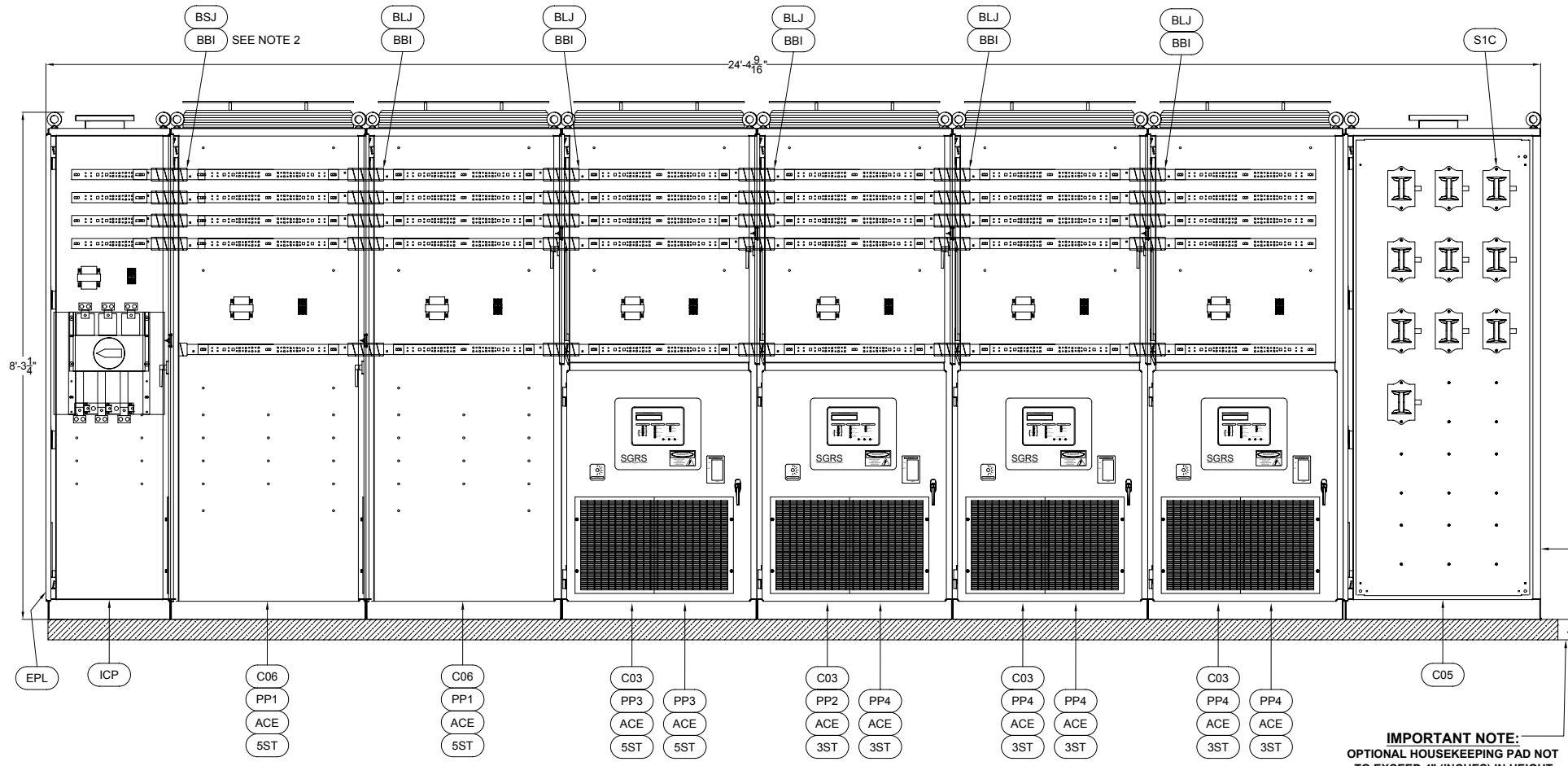
GENERAL BILL OF MATERIAL			
Item #	Description	U/M	QTY
S1C	S-1 SERIES CUTOUT (SCO)	EA	10
LBS	LABEL GRN BACK WITH WHT LETTERS	EA	1
ACE	DCU FINAL ASSY.W/DIS.BD.&1CKT.	EA	10
5ST	ROTARY SWITCH LABEL 5 STEP	EA	4
3ST	ROTARY SWITCH LABEL 3 STEP	EA	6
ICP	SGRS FERRO PWR BAY,SEISMIC W/DISC.	EA	1
C03	SGRS FERRO PWR PK BAY SEISMIC 4 SING BUS	EA	4
C05	SGRS FERRO S1 BAY SEISMIC 4 SIEMENS S1	EA	1
C06	SGRS FERRO PP CAB SEIS 4 SING BUS 50/70	EA	2
EPL	SGRS FERRO END COVER PLATE L	EA	1
ERR	SGRS FERRO END COVER PLATE R	EA	1
BSJ	SGRS FERRO BUSBAR SMALL JMP	EA	10
BLJ	SGRS FERRO BUSBAR LARGE JMP	EA	50
BBI	INSULATOR BUSS BAR, FERRO SGRS	EA	30
H02	3/8-16 X 1 HX HD	EA	30
H03	3/8-16 X 1&1/2 HX HD	EA	70
CBH	12A WG WIRE 25KV DC 150C WHITE	FT	700
W04	6AWG UL1283 133/27 GRN/YL TRCR	FT	1
W02	WIRE 4A WG 600V 105C 19-STRA ND	FT	105
CBB	18/3 SJOW CORD 18 AWG 3 WIRE	FT	210
PP1	FERRO SGRS PP 50KW 480V 5S 20A	EA	2
PP4	SGRS PP 4KW 480V 3S 6.6A	EA	5
PP2	FERRO SGRS PP 30KW 480V 3S 6.6A	EA	1
PP3	FER SGRS PP 30KW 480V 5S 6.6A HORIZ	EA	2

NOTES:

- FULLY ASSEMBLED WEIGHTS:
 - A. INCOMING POWER BAY = 820 LBS
 - B. POWERPACK BAY (W/OUT POWERPACKS INSTALLED) = 1230 LBS
 - C. S1 BAY = 1180 LBS
 - D. POWERPACKS: 30KW = 1280 LBS
20KW = 1050 LBS
70KW = 2200 LBS
- TYPICAL OF ALL INTERCONNECTING BUS JUMPERS.
- TYPICAL BUS JUMP BETWEEN POWERPACK BAYS.
- CONDUIT PENETRATIONS VARY FROM SITE TO SITE AND ARE TO BE COORDINATED BY THE INSTALLING CONTRACTOR. SAS RECOMMENDS THAT THE INSTALLING CONTRACTOR USE THEIR BEST JUDGMENT IN DETERMINING HOW TO RUN MAIN POWER, COMMUNICATIONS, AND UPS LINES TO THE SGRS. ENTRY AND EXIT CONDUITS HAVE BEEN BROUGHT IN FROM UNDER THE SGRS (THROUGH FLOOR), THROUGH THE SIDE AND ALSO THROUGH THE TOP OF THE ENCLOSURE.



IMPORTANT NOTE:
OPTIONAL HOUSEKEEPING PAD NOT TO EXCEED 4" (INCHES) IN HEIGHT. FRONT OF SGRS UNIT MUST BE FLUSH WITH FRONT OF HOUSEKEEPING PAD



IMPORTANT NOTE:
OPTIONAL HOUSEKEEPING PAD NOT TO EXCEED 4" (INCHES) IN HEIGHT. FRONT OF SGRS UNIT MUST BE FLUSH WITH FRONT OF HOUSEKEEPING PAD

CAUTION:
THIS DRAWING IS ONLY INTENDED FOR USE AS GENERAL AIRFIELD SYSTEM DESIGN GUIDANCE. THE DESIGNER MUST VERIFY DESIGN WITH LOCAL CODES AND VARYING CHARACTERISTICS FOR EACH UNIQUE AIRFIELD APPLICATION.

ASSOCIATED DRAWINGS: _____
 DRAWN BY: _____
 DRAWN DATE: _____
 INITIAL DATE: _____
 UNAUTHORIZED DUPLICATION OF THIS DOCUMENT IN WHOLE OR PART IS PROHIBITED. INITIALED IN RED INK BELOW INDICATES AUTHORIZED COPY.

REV.	DATE	DESCRIPTION
A		

DRAWING TITLE: FERRO SWITCHGEAR REGULATOR SYSTEM
 SWITCHGEAR LINEUP ASSEMBLY
 DRAWING NUMBER: **SGRS/1**

ADB
 ADB Airfield Solutions
 977 Gahanna Parkway, Columbus, Ohio 43230
 Telephone: 614-861-1304, Fax: 614-864-2069
 Copyright © 2010 ADB Airfield Solutions.

BUS & BREAKER RATINGS

VOLTAGE RATING OF BUS : 480VAC, 60Hz, 3 PHASE

BUS BAR AMPACITY RATING : 800AMP

BUS BAR WITHSTANDING RATING : 65000 AIC

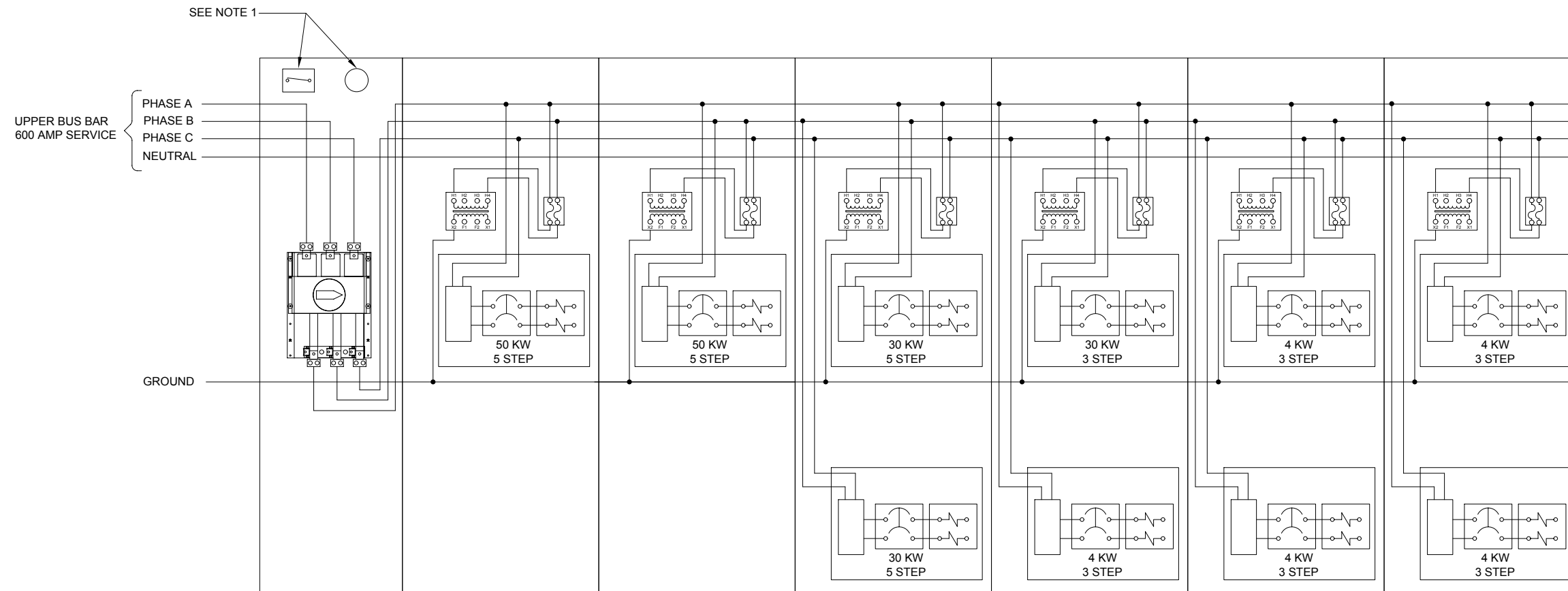
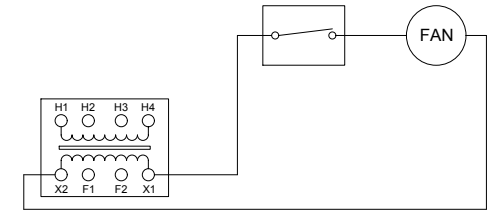
AMPACITY OF MAIN BREAKER : 600AMP, 3 POLE, 600VAC

AMPACITY OF POWERPACK BREAKERS :

KW	CIRCUIT BREAKER SIZE
4	20A, 2P, 600VAC
7.5	30A, 2P, 600VAC
10	40A, 2P, 600VAC
15	60A, 2P, 600VAC
20	70A, 2P, 600VAC
30	100A, 2P, 600VAC
50	100A, 2P, 600VAC
70	225A, 2P, 600VAC

NOTES:

1. WIRED FROM TRANSFORMER IN ADJACENT CABINET.



CAUTION:

THIS DRAWING IS ONLY INTENDED FOR USE AS GENERAL AIRFIELD SYSTEM DESIGN GUIDANCE. THE DESIGNER MUST VERIFY DESIGN WITH LOCAL CODES AND VARYING CHARACTERISTICS FOR EACH UNIQUE AIRFIELD APPLICATION.

CONTROLLED COPY
Unauthorized duplication of this document in whole or part is prohibited.
Initiated in RED ink below indicates authorized copy.

ASSOCIATED DRAWINGS:
SGRS/1
DRAWN BY:
DRAWN DATE:

REV
DATE

DRAWN
BY

REVISION DESCRIPTION

REV
LEVEL

REV
DATE

DRAWN
BY

REVISION DESCRIPTION

REV
LEVEL

REV
DATE

DRAWN
BY

REVISION DESCRIPTION

REV
LEVEL

REV
DATE

DRAWN
BY

REVISION DESCRIPTION

REV
LEVEL

REV
DATE

DRAWN
BY

REVISION DESCRIPTION

REV
LEVEL

REV
DATE

DRAWN
BY

REVISION DESCRIPTION

REV
LEVEL

REV
DATE

DRAWN
BY

REVISION DESCRIPTION

REV
LEVEL

REV
DATE

DRAWN
BY

REVISION DESCRIPTION

REV
LEVEL

REV
DATE

DRAWN
BY

REVISION DESCRIPTION

REV
LEVEL

REV
DATE

DRAWN
BY

REVISION DESCRIPTION

REV
LEVEL

REV
DATE

DRAWN
BY

REVISION DESCRIPTION

REV
LEVEL

REV
DATE

DRAWN
BY

REVISION DESCRIPTION

REV
LEVEL

REV
DATE

DRAWN
BY

REVISION DESCRIPTION

REV
LEVEL

REV
DATE

DRAWN
BY

REVISION DESCRIPTION

REV
LEVEL

REV
DATE

DRAWN
BY

REVISION DESCRIPTION

REV
LEVEL

REV
DATE

DRAWN
BY

REVISION DESCRIPTION

REV
LEVEL

REV
DATE

DRAWN
BY

REVISION DESCRIPTION

REV
LEVEL

REV
DATE

DRAWN
BY

REVISION DESCRIPTION

REV
LEVEL

REV
DATE

DRAWN
BY

REVISION DESCRIPTION

REV
LEVEL

REV
DATE

DRAWN
BY

REVISION DESCRIPTION

REV
LEVEL

REV
DATE

DRAWN
BY

REVISION DESCRIPTION

REV
LEVEL

REV
DATE

DRAWN
BY

REVISION DESCRIPTION

REV
LEVEL

REV
DATE

DRAWN
BY

REVISION DESCRIPTION

REV
LEVEL

REV
DATE

DRAWN
BY

REVISION DESCRIPTION

REV
LEVEL

REV
DATE

DRAWN
BY

REVISION DESCRIPTION

REV
LEVEL

REV
DATE

DRAWN
BY

REVISION DESCRIPTION

REV
LEVEL

REV
DATE

DRAWN
BY

REVISION DESCRIPTION

REV
LEVEL

REV
DATE

DRAWN
BY

REVISION DESCRIPTION

REV
LEVEL

REV
DATE

DRAWN
BY

REVISION DESCRIPTION

REV
LEVEL

REV
DATE

DRAWN
BY

REVISION DESCRIPTION

REV
LEVEL

REV
DATE

DRAWN
BY

REVISION DESCRIPTION

REV
LEVEL

REV
DATE

DRAWN
BY

REVISION DESCRIPTION

REV
LEVEL

REV
DATE

DRAWN
BY

REVISION DESCRIPTION

REV
LEVEL

REV
DATE

DRAWN
BY

REVISION DESCRIPTION

REV
LEVEL

REV
DATE

DRAWN
BY

REVISION DESCRIPTION

REV
LEVEL

REV
DATE

DRAWN
BY

REVISION DESCRIPTION

REV
LEVEL

REV
DATE

DRAWN
BY

REVISION DESCRIPTION

REV
LEVEL

REV
DATE

DRAWN
BY

REVISION DESCRIPTION

REV
LEVEL

REV
DATE

DRAWN
BY

REVISION DESCRIPTION

REV
LEVEL

REV
DATE

DRAWN
BY

REVISION DESCRIPTION

REV
LEVEL

REV
DATE

DRAWN
BY

REVISION DESCRIPTION

REV
LEVEL

REV
DATE

DRAWN
BY

REVISION DESCRIPTION

REV
LEVEL

REV
DATE

DRAWN
BY

REVISION DESCRIPTION

REV
LEVEL

REV
DATE

DRAWN
BY

REVISION DESCRIPTION

REV
LEVEL

REV
DATE

DRAWN
BY

REVISION DESCRIPTION

REV
LEVEL

REV
DATE

DRAWN
BY

REVISION DESCRIPTION

REV
LEVEL

REV
DATE

DRAWN
BY

REVISION DESCRIPTION

REV
LEVEL

REV
DATE

DRAWN
BY

REVISION DESCRIPTION

REV
LEVEL

REV
DATE

DRAWN
BY

REVISION DESCRIPTION

REV
LEVEL

REV
DATE

DRAWN
BY

REVISION DESCRIPTION

REV
LEVEL

REV
DATE

DRAWN
BY

REVISION DESCRIPTION

REV
LEVEL

REV
DATE

DRAWN
BY

REVISION DESCRIPTION

REV
LEVEL

REV
DATE

DRAWN
BY

REVISION DESCRIPTION

REV
LEVEL

REV
DATE

DRAWN
BY

REVISION DESCRIPTION

REV
LEVEL

REV
DATE

DRAWN
BY

REVISION DESCRIPTION

REV
LEVEL

REV
DATE

DRAWN
BY

REVISION DESCRIPTION

REV
LEVEL

REV
DATE

DRAWN
BY

REVISION DESCRIPTION

REV
LEVEL

REV
DATE

DRAWN
BY

REVISION DESCRIPTION

REV
LEVEL

REV
DATE

DRAWN
BY

REVISION DESCRIPTION

REV
LEVEL

REV
DATE

DRAWN
BY

REVISION DESCRIPTION

REV
LEVEL

REV
DATE

DRAWN
BY

REVISION DESCRIPTION

REV
LEVEL

REV
DATE

DRAWN
BY

REVISION DESCRIPTION

REV
LEVEL

REV
DATE

DRAWN
BY

REVISION DESCRIPTION

REV
LEVEL

REV
DATE

DRAWN
BY

REVISION DESCRIPTION

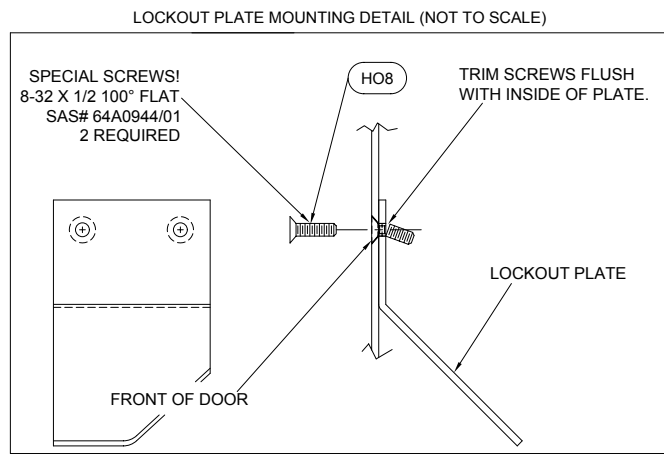
REV
LEVEL

REV
DATE

DRAWN
BY

REVISION DESCRIPTION

REV
LEVEL

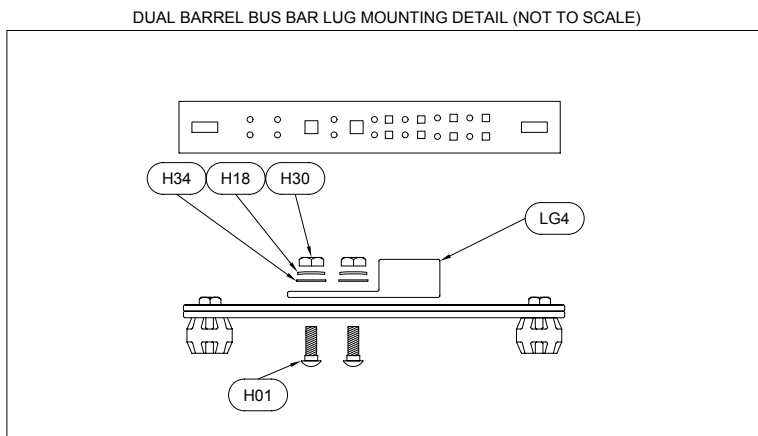
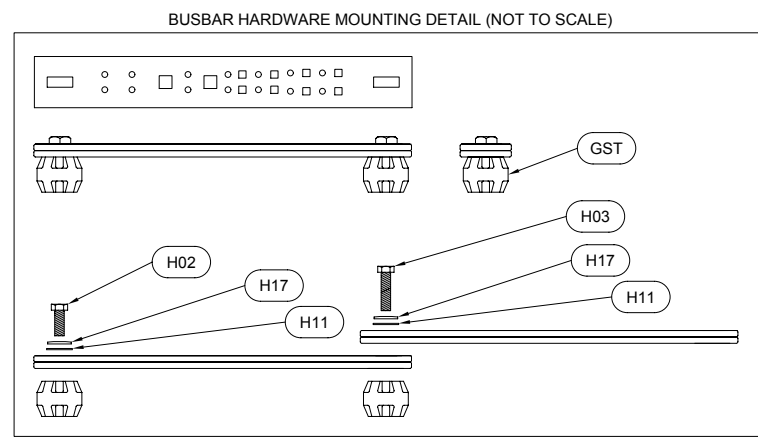
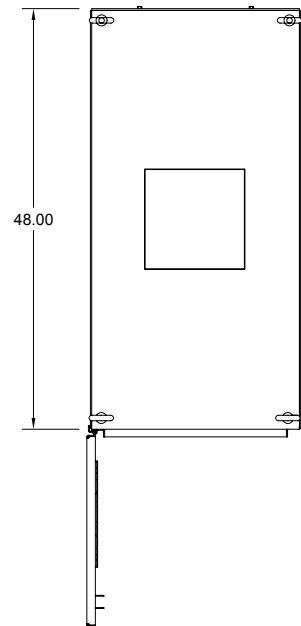


TORQUE SPECIFICATIONS FOR BUS BAR

SIZE	TORQUE VALUE
1/4 - 20	8.75 FT. - LB
1/2 - 13	40 FT. - LB
3/8 - 16	20 FT. - LB

TORQUE SPECIFICATIONS FOR BUS BAR

SCREW TYPE	TORQUE VALUE
350 MCM CONNECTOR	27 FT. - LB
LARGE PANDUIT LUG	4.16 FT. - LB
SMALL ILSCO LUG	3.75 FT. - LB

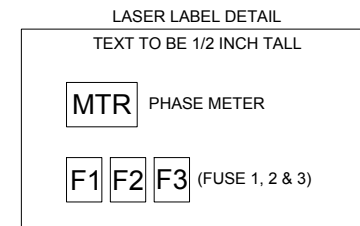
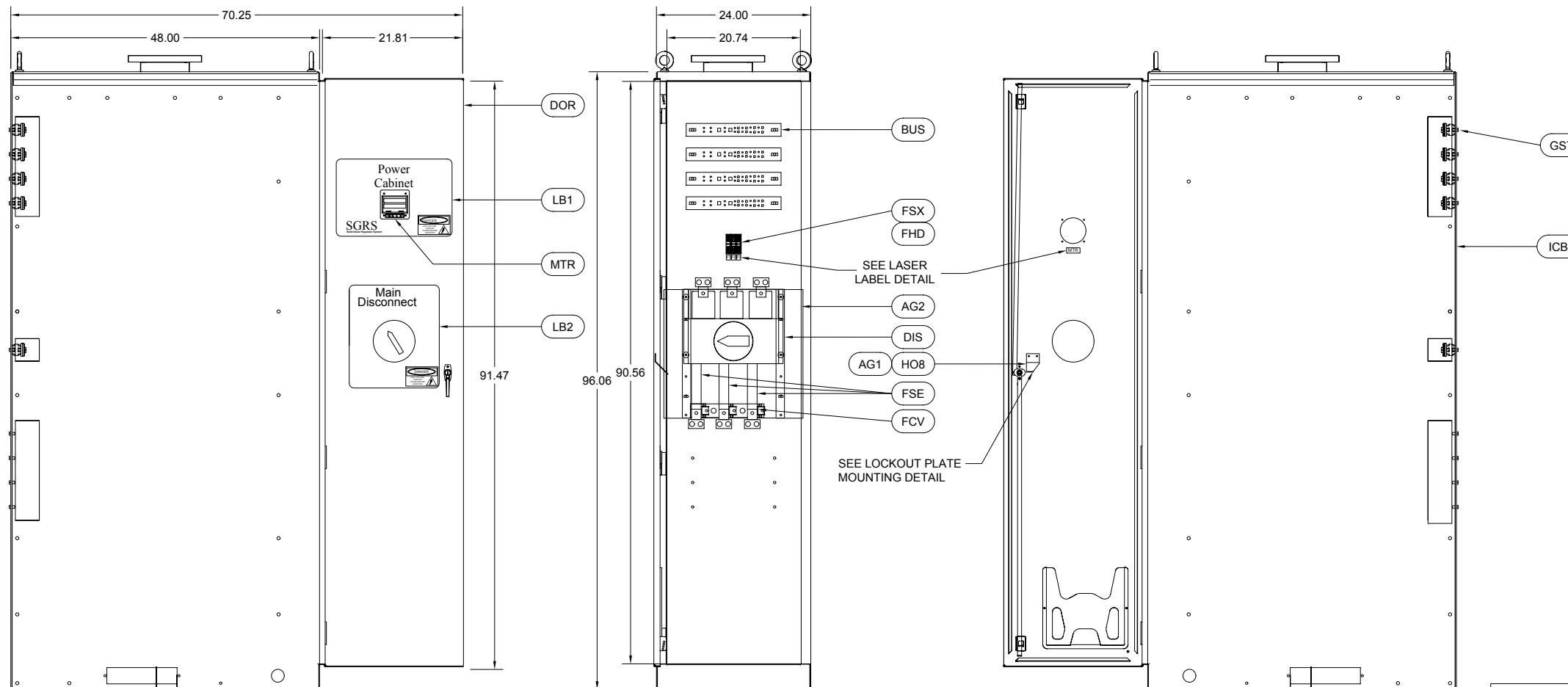


GENERAL BILL OF MATERIAL

Item #	Description	U/M	QTY
CTX	600-5 CURRENT TRANSFORMER W/O BASE	EA	3
LB1	SGRS POWER CABINET OVERLAY	EA	1
LB2	SGRS MAIN DISCONNECT OVERLAY	EA	1
LBS	LABEL GRN BACK WITH WHT LETTERS	EA	1
DIS	FUSEABLE DISC.SW 600A 600V	EA	1
FSE	"FUSE 600A 600V 10-3/8"	EA	3
FSX	FUSE 1/4A 600V	EA	3
FHD	FUSEHOLDER	EA	1
MTR	TPLE DISP IV HZ .3P 4WIRE 300V	EA	1
ICB	SGRS FERRO ICP BAY, SEISMIC	EA	1
DOR	SGRS FERRO ICPB DOOR PHASE MTR & DISC	EA	1
PAG	POGODA EXHAUST VENT, FAN & DRIP GUARD	EA	1
BUS	SGRS FERRO BUSBAR POWER CAB	EA	10
AG1	SGRS LC LOCK OUT BRACKET	EA	1
AG2	SGRS FERRO L/R DISCT MTG ANG	EA	1
GST	GLASTIC STANDOFF INSULATOR 600V	EA	10
FCV	R TYPE FUSE CONVER KIT (600A)	EA	1
H02	3/8-16 X 1 HX HD	EA	5
H03	3/8-16 X 1&1/2 HX HD	EA	5
H01	1/2 X 13 X 1-1/2 CARRIAGE BOLT SS	EA	10
H08	8-32 X 1/2 FLT HD PHI 100 DEG	EA	2
H30	1/2-13 HX NUT	EA	10
H11	3/8 FLA TWA SHER	EA	10
H34	1/2 FLA TWA SHER	EA	10
H17	BELLEVILLE WASHER 3/8"	EA	10
H18	BELLEVILLE WASHER 1/2"	EA	10
H20	TERM RING 12-10AWG 1/4 INSUL	EA	2
H24	MALE DISC 16-14AWG .25X.03 INS	EA	2
H25	FEM DISC 16-14AWG .25X.03 INS	EA	2
LG4	DUAL BARREL TWOHOLE BUSBAR LUG	EA	5
W16	WIRE 16AWG 600V 105C WHT	FT	30

NOTES:

1. PLACE OVERLAY ON DOOR THEN CUT HOLE FOR PHASE METER.
2. FUSE BLOCK TO BE MOUNTED TO BACK WALL OF CABINET.
3. SEE ONE-LINE DIAGRAM FOR POGODA TOP WIRING.
4. FULLY ASSEMBLED WEIGHT = 820 LBS.



CAUTION:

THIS DRAWING IS ONLY INTENDED FOR USE AS GENERAL AIRFIELD SYSTEM DESIGN GUIDANCE. THE DESIGNER MUST VERIFY DESIGN WITH LOCAL CODES AND VARYING CHARACTERISTICS FOR EACH UNIQUE AIRFIELD APPLICATION.

CONTROLLED COPY

Unauthorized duplication of this document in whole or part is prohibited. Initialed in RED ink below indicates authorized copy.

ASSOCIATED DRAWINGS: N/A

DRAWN BY: [Signature]

DRAWN DATE: [Date]

INITIAL & DATE

REVISION DESCRIPTION

REV LEVEL

REV DATE

REV DATE

REV DATE

REV DATE

REV DATE

REV DATE

REV DATE

ADB

ADB Airfield Solutions

977 Gahanna Parkway, Columbus, Ohio 43230

Telephone: 614-861-1304, Fax: 614-864-2069

All information contained herein, including illustrations, drawings, and schedules, is the property of ADB Airfield Solutions and is to be used only for the project and date of this publication, but is subject to change without notice. ADB reserves the right to make changes and improvements to its products and assume no responsibility for these modifications. ADB Airfield Solutions may otherwise agree to in writing. Copyright © 2010 ADB Airfield Solutions.

REV DATE

REV DATE

REV DATE

REV DATE

REV DATE

REV DATE

REV DATE

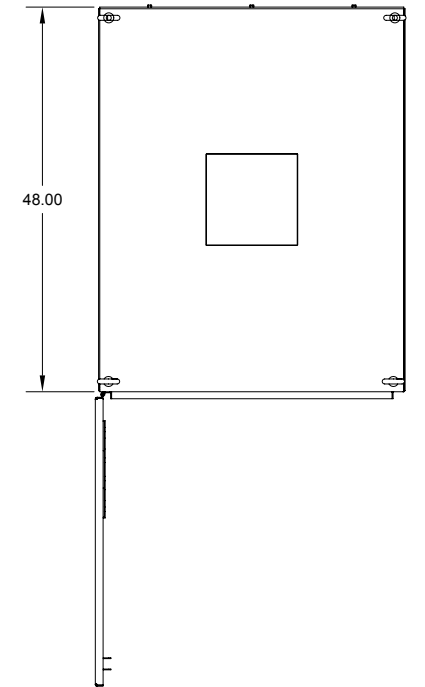
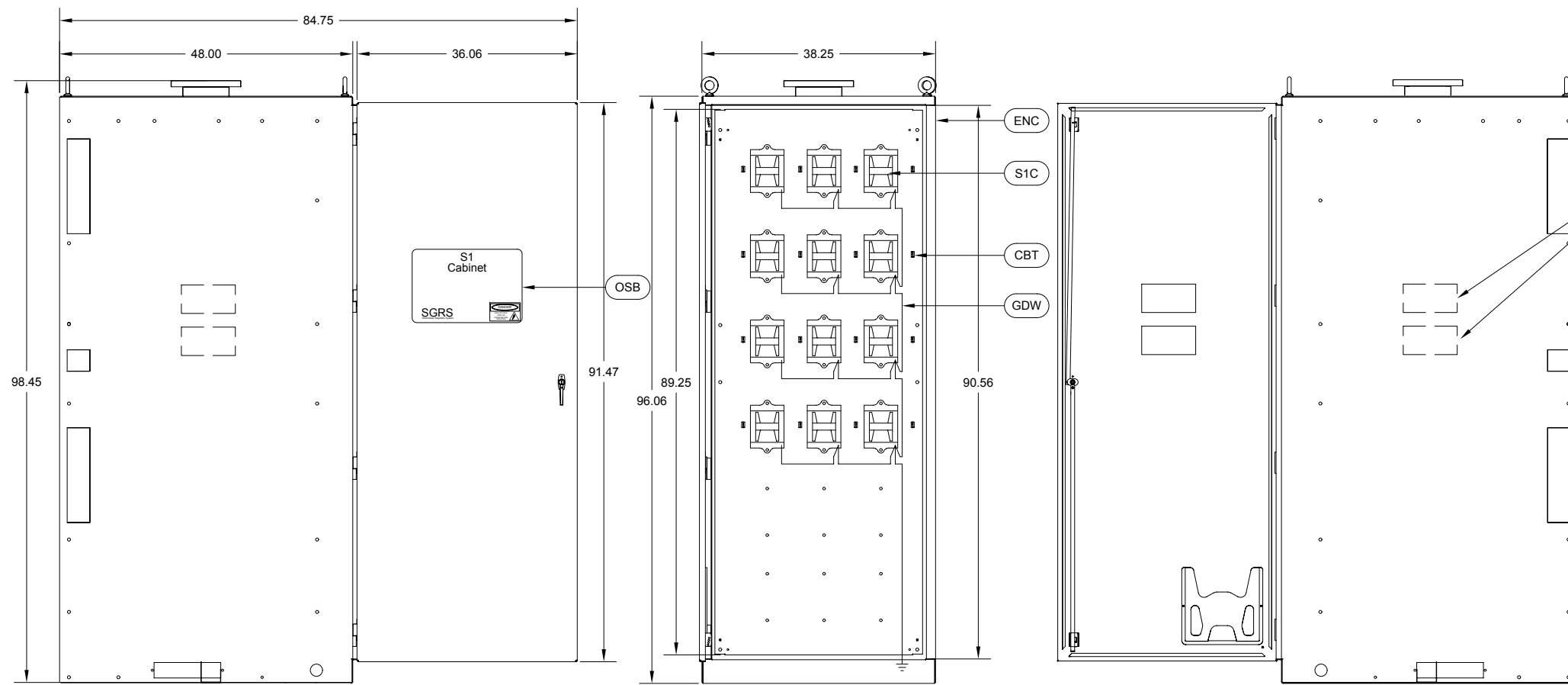
REV DATE

REV DATE

REV DATE

DRAWING TITLE:
SWITCHGEAR REGULATOR SYSTEM
FERRO POWER CABINET - SINGLE BUS
WITH DISCONNECT & PHASE METER

DRAWING NUMBER:
SGRS/3



GENERAL BILL OF MATERIAL			
Item #	Description	U/M	QTY
S1C	S-1 SERIES CUTOUT (SCO)	EA	12
OSB	SGRS S1 CABINET OVERLAY	EA	1
ENC	SGRS FERRO S1 BAY ENCLOSURE	EA	1
CMM	CABLE TIE MOUNT METAL	EA	16
CBT	CABLE TIE MOUNTS	EA	3
H20	TERM RING 12-10AWG 1/4 INSUL	EA	4
H21	TERM RING 12-10AWG #10 INSUL	EA	30
H22	TERM RING 6AWG 3/8 NOINSUL	EA	1
H23	TERM RING 12-10AWG 3/8 NOINSUL	EA	6
H24	MALE DISC 16-14AWG .25X.03 INS	EA	2
H25	FEM DISC 16-14AWG .25X.03 INS	EA	2
W02	12AWG UL1015 65/30 GRN/Y TRCR	FT	25
W04	6AWG UL1283 133/27 GRN/Y L TRCR	FT	25
WGD	WIRE, GND, 6AWG BARE, STRANDED, SOFT	FT	17

NOTE:
1. FULLY ASSEMBLED WEIGHT = 1180 LBS.

CAUTION:
THIS DRAWING IS ONLY INTENDED FOR USE AS GENERAL AIRFIELD SYSTEM DESIGN GUIDANCE. THE DESIGNER MUST VERIFY DESIGN WITH LOCAL CODES AND VARYING CHARACTERISTICS FOR EACH UNIQUE AIRFIELD APPLICATION.

CONTROLLED COPY
Unauthorized duplication of this document in whole or part is prohibited. Initialed in RED ink below indicates authorized copy.

ASSOCIATED DRAWINGS: N/A
DRAWN BY: N/A
DRAWN DATE: N/A

Initials: _____
Date: _____

REVISIONS:

REV	DATE	DESCRIPTION
A		

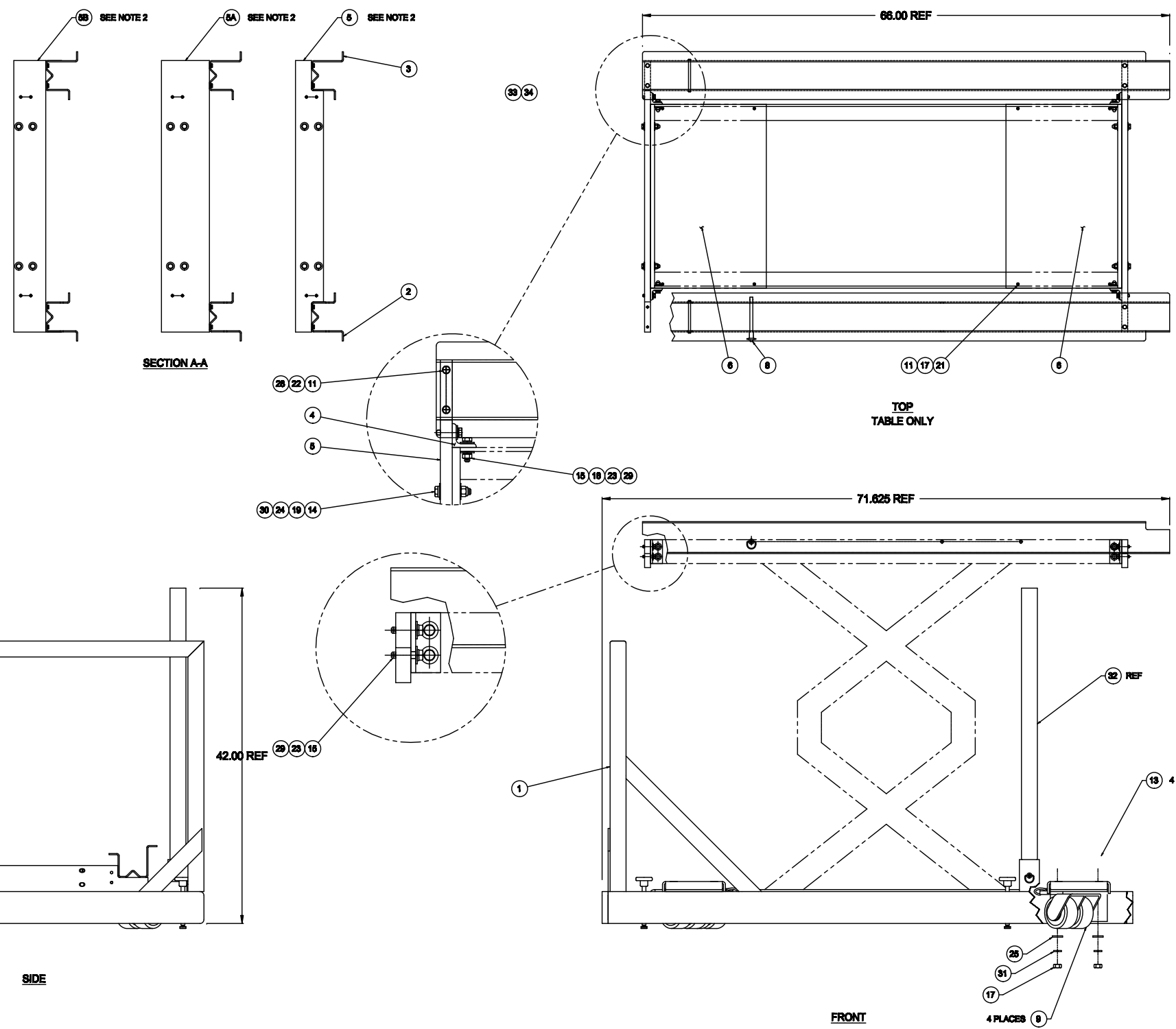
DRAWING TITLE: SWITCHGEAR REGULATOR SYSTEM
FERRO S1 BAY ASSEMBLY WITH
(12) S1 CUTOUTS

DRAWING NUMBER: SGRS/6

Copyright © 2010 ADB Airfield Solutions.
977 Gahanna Parkway, Columbus, Ohio 43230
Telephone: 614-861-1304, Fax: 614-864-2069

GENERAL ASSEMBLY BILL OF MATERIAL				
ITEM #	PART NUMBER	PART DESCRIPTION	UNITS	QTY
1	44A6302	LIFT TABLE WITH CASTERS WELDMENT ASSY.	EA	1
2	60A2818/X	RIGHT RAIL LIFT TABLE	EA	1
3	60A2818/X	LEFT RAIL LIFT TABLE	EA	1
4	60A2824	SUPPORT BRKT LIFT FERRO SGRS	EA	4
5	60A2825	RAIL SUPPORT LIFT FERRO SGRS (0-1.5" HOUSEKEEP PAD)	EA	2
5A	60A2825/4	RAIL SUPPORT LIFT FERRO SGRS(3.8-5.3 HOUSEKEEP PAD)	EA	2
5B	60A2825/3	RAIL SUPPORT LIFT FERRO SGRS(2.3-3.8" HOUSEKEEP PAD)	EA	2
6	60A2840	SGRS FERRO LIFT TABLE COVER	EA	2
7	61A0327/40	BALL LOCK PIN 3/8 X 2.50"	EA	2
8	61A0327/64	BALL LOCK PIN 3/8 X 4"	EA	1
9	61A0354	CASTER 1600# CAP, 4 POS LOCK, NO BRAKE	EA	4
10	61A0355	STRAIGHT LINE ACTION CLAMP	EA	4
11	64A0173/10	1/4-20 X 6/8 HX HD	EA	8
12	64A0191/8	8-32 X 1/2 PAN HD PHIL	EA	8
13	64A0191/24	1/2-13 FLAT HEAD CAP SCREW, 82DG, ST STL	EA	16
14	64A048/32	HEX BOLT 3/8-16 X 2 GRD 8	EA	8
15	64A0660/20	HEX BOLT 5/16-24X1 1/4 GRADE 8	EA	16
16	64A0660/16	10-32 SOCKET HD CP SCRW, 18-8STNL.S, 1.0	EA	16
17	66A0015/33	1/2-13 HX NUT	EA	16
18	66A023/05	HEX NUT 5/16-24 NYLON LCK GRD8	EA	16
19	66A023/06	HEX NUT 3/8-16 NYLON LOCK GRD8	EA	8
20	66A0018/15	#8 FLATWASHER	EA	8
21	66A0015/17	#10 FLATWASHER	EA	16
22	66A0015/24	1/4 FLATWASHER	EA	8
23	66A0015/26	5/16 FLATWASHER	EA	24
24	66A0015/29	3/8 FLATWASHER	EA	16
25	66A0015/33	1/2 FLATWASHER	EA	16
26	66A0026/15	#8 SPLIT LOCKWASHER	EA	8
27	66A0026/17	#10 SPLIT LOCKWASHER	EA	16
28	66A0026/24	1/4 SPLIT LOCKWASHER	EA	8
29	66A0026/26	5/16 SPLIT LOCKWASHER	EA	16
30	66A0026/29	3/8 SPLIT LOCKWASHER	EA	8
31	66A0026/33	1/2 SPLIT LOCKWASHER	EA	16
32	60A2860/7	SGRS LIFT W/CASTERS HANDRAIL DETACHABLE	EA	REF
33	60A2866	STOP PIN	EA	2
34	65A0021/08	SNAP RING	EA	4

SEE NOTE 2
SEE NOTE 2
SEE NOTE 2



- NOTES:
1. PAINT ITEMS 1, 4, 5, 6, AND 32 TO MATCH EXISTING STRUCTURE PRIOR TO ASSEMBLY.
 2. USE 60A2825 FOR 44A6266.
USE 60A2825/3 FOR 44A6266/3.
USE 60A2825/4 FOR 44A6266/4.
 3. USE 60A2818/2 AND 60A2819/2 FOR 0" TO 1.5" HOUSEKEEPING PAD

44A6266 /X
(no dash) = 0" to 1.5" THICK HOUSEKEEPING PAD
3 = 2.3" to 3.8" THICK HOUSEKEEPING PAD
4 = 3.8" to 5.3" THICK HOUSEKEEPING PAD

CONTROLLED COPY
Unauthorized duplication of this document in whole or part is prohibited.
Initiated in RED Ink below indicates authorized copy.

APPROVED FOR ISSUANCE
44A6266
JIM GAFFNEY
DRAWN DATE: 14 APR 03

ALL INFORMATION CONTAINED HEREIN, INCLUDING DIMENSIONS, SPECIFICATIONS, AND DIMENSIONS, IS BELIEVED TO BE VALID AS OF THE DATE OF THIS PUBLICATION, BUT IS SUBJECT TO CHANGE WITHOUT NOTICE. THE USER ASSUMES ALL LIABILITY FOR ANY DAMAGE OR INJURY RESULTING FROM THE USE OF THIS INFORMATION IN ANY MANNER. ANY DISCREPANCY BETWEEN THIS INFORMATION AND ANY OTHER INFORMATION SHALL BE THE RESPONSIBILITY OF THE USER. ADB/ARFIELD SOLUTIONS MAY OBTAIN AGENCY TO IN-SITUATION.

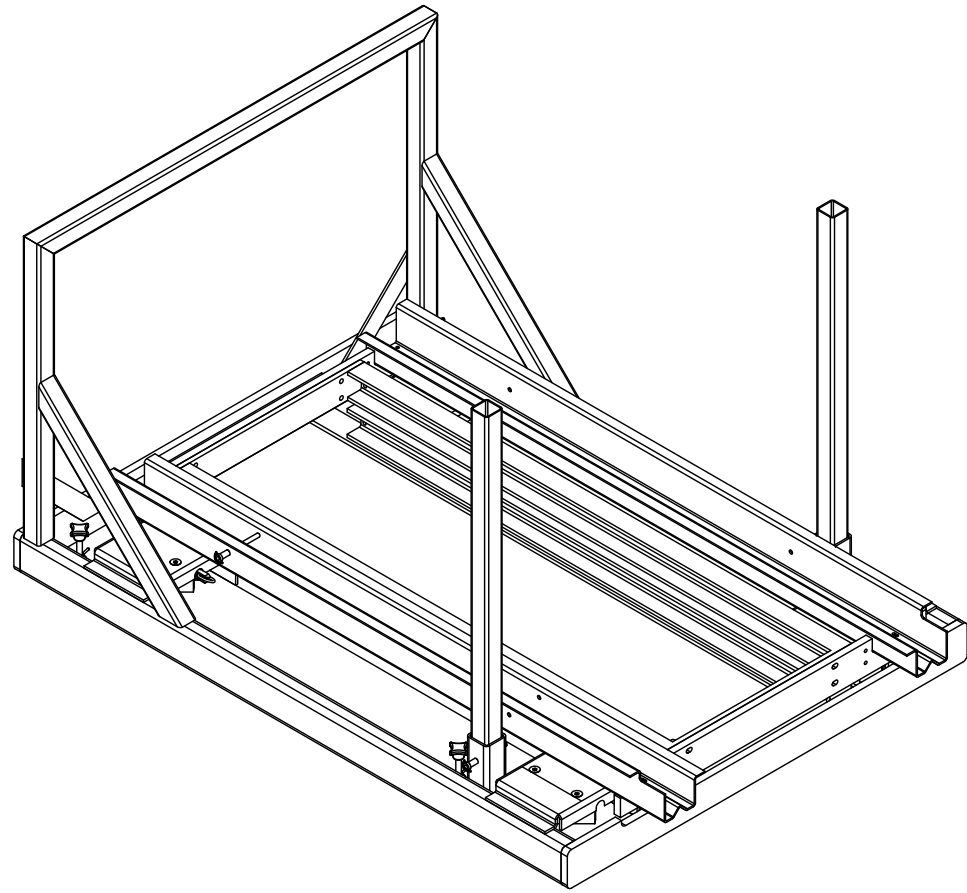
ADDITIONAL REVISIONS:
17 FEB 11
J.L.C.
DRAWN BY

REV.	DATE	DESCRIPTION
H	29 MAR 04	ADD WIDTH DIM - ECO-3047
G	16 JUN 03	ADD NOTE 3, UPDATE ITEM 2 & 3
F	29 APR 03	TITLE BLOCK UPDATE
E	27 OCT 03	TITLE BLOCK UPDATE
D	06 APR 04	ADDED REF DIMENSIONS
C	06 APR 04	ADDED /S CONFIG

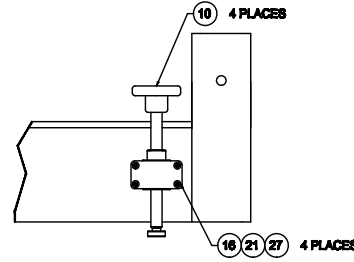
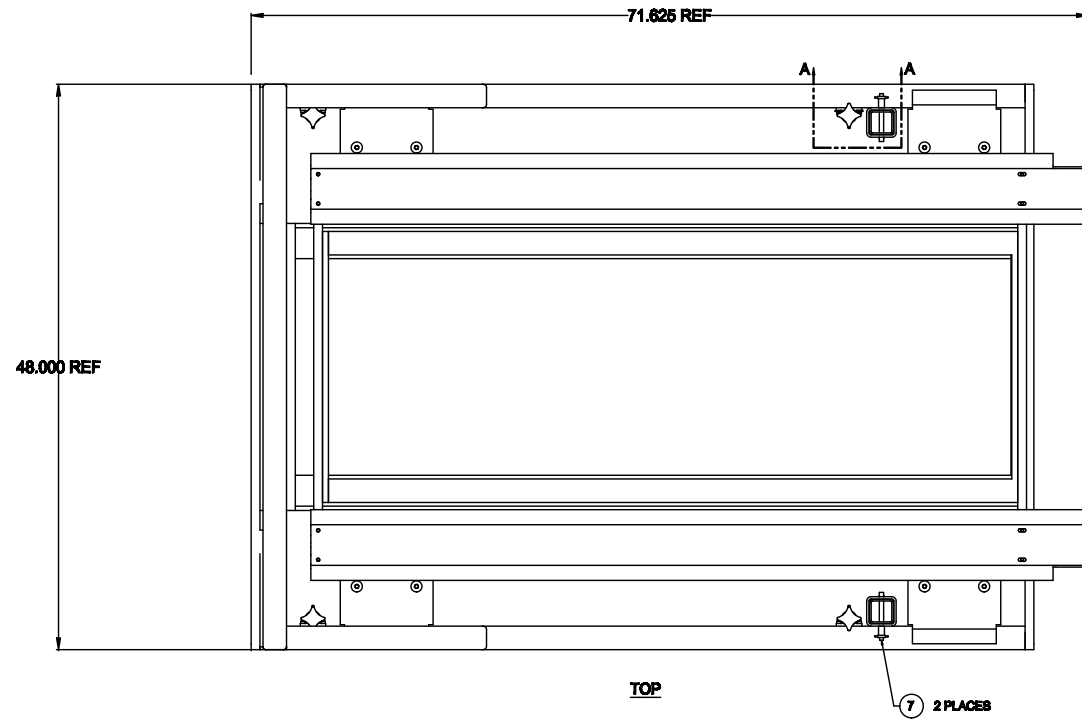
DRAWING TITLE: FERRO SGRS LIFT TABLE WITH CASTERS ASSEMBLY SHEET 2

DRAWING NUMBER: 44A6266/X

ADDITIONAL INFORMATION: ADB/ARFIELD SOLUTIONS, 977 Gahanna Parkway, Columbus, Ohio 43230, Telephone: 614-861-1304, Fax: 614-864-2088



ISOMETRIC VIEW



SECTION A-A
2 X SCALE

44A6266 /X
 (no dash) = 0" to 1.5" THICK HOUSEKEEPING PAD
 3 = 2.3" to 3.8" THICK HOUSEKEEPING PAD
 4 = 3.8" to 5.3" THICK HOUSEKEEPING PAD

DRAWING TITLE:
**FERRO SGRS
 LIFT TABLE WITH CASTERS ASSEMBLY
 SHEET 2**

DRAWING NUMBER:
44A6266/X

G	ADD NOTE 3, UPDATE ITEM 2 & 3	J.L.C.	18JUN09
F	TITLEBLOCK UPDATE	T.D.N.	20APR09
E	TITLEBLOCK UPDATE	B.A.R.	27OCT08
D	ADDED REF DIMENSIONS	B.A.R.	08APR04
C	ADDED /S CONFIG	G.A.M.	28MAR04
H	REVISION DESCRIPTION		

H	ADD WIDTH DIM - ECO-3047	J.L.C.	17FEB11
	REVISION DESCRIPTION		

44A6266	ASSOCIATED DRAWING NUMBER	J.L.C.	DATE
JIM GAFFNEY	DRAWN BY		
14 APR 08	DATE		

CONTROLLED COPY
 Unauthorised duplication of this document in whole or part is prohibited.
 Initialed in RED ink below indicates authorized copy.

ADB
 ADB Airfield Solutions
 977 Gahanna Parkway, Columbus, Ohio 43230
 Telephone: 614-891-1304, Fax: 614-894-2069