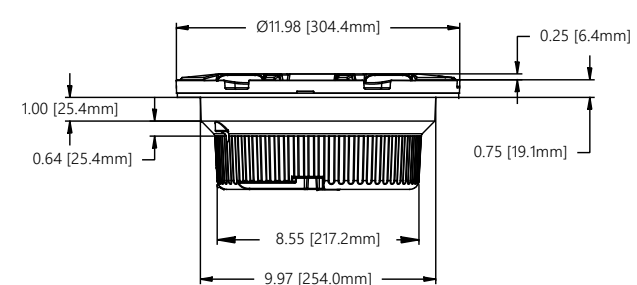
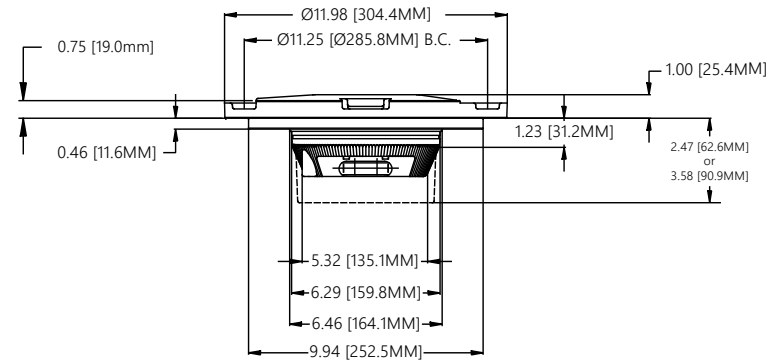


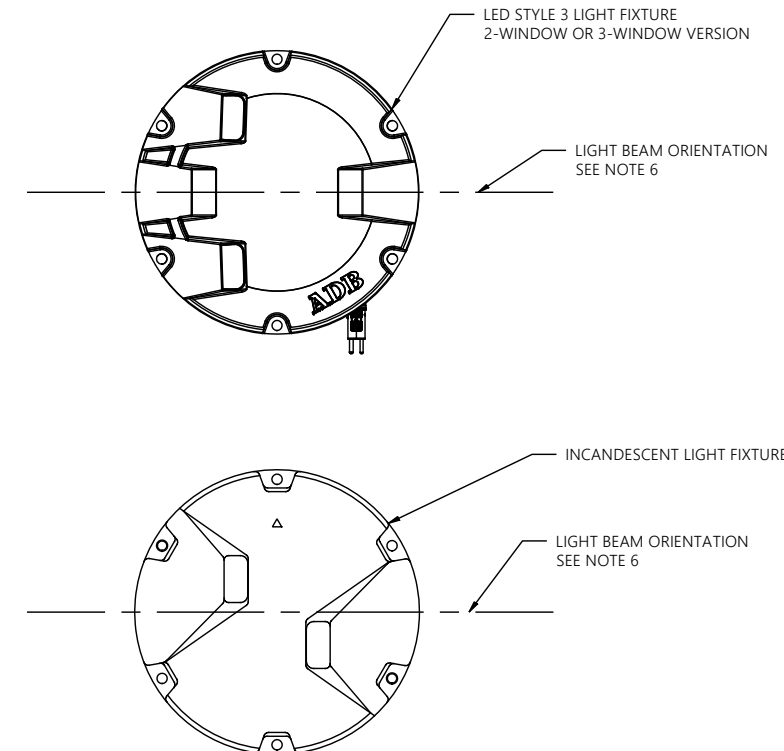
1 PIECE BASE
INSTALLATION



LED STYLE 3
REFERENCE DIMENSIONS




INCANDESCENT
REFERENCE DIMENSIONS

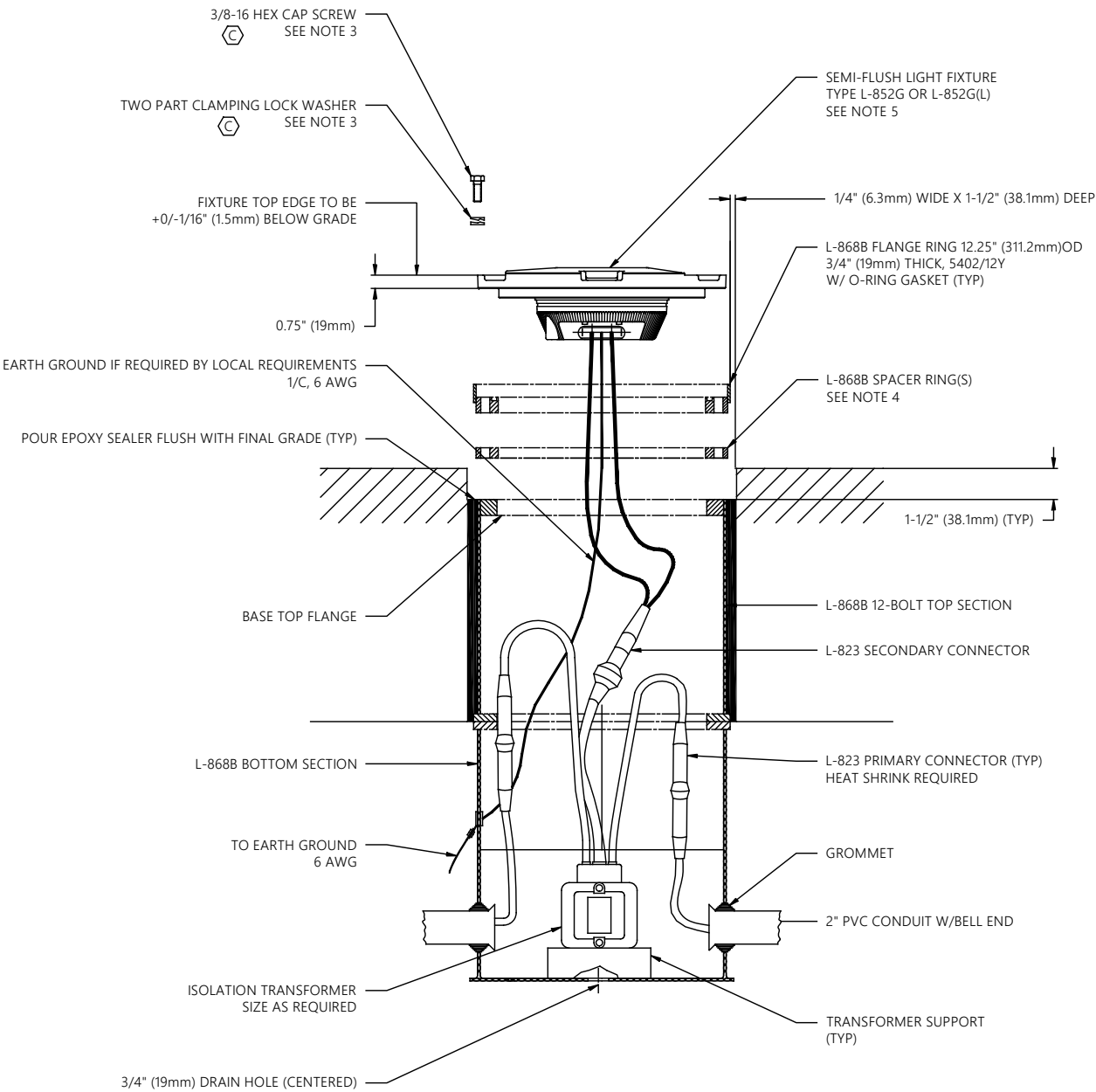


LIGHT DETAIL NOTES:

1. LIGHT BASES SHALL BE INSTALLED WITH CARE TO ASSURE VERTICAL & AZIMUTH ALIGNMENT OF FIXTURE.
2. PROVIDE 2'-3" (600-900mm) CABLE SLACK WITHIN LIGHT BASE TO ALLOW TRANSFORMER SERVICING.
3. REFER TO FAA ENGINEERING BRIEF 83 (LATEST REVISION) FOR RECOMMENDED INSTALLATION REQUIREMENTS INCLUDING BOLT, WASHER, AND TORQUE GUIDANCE.
4. AS REQUIRED TO MAINTAIN +0/-1/16" (1.5mm) BELOW GRADE FAA INSTALLATION TOLERANCE. A MAXIMUM OF THREE SPACER RINGS MAY BE STACKED TOGETHER, INCLUDING FLANGE RING.
5. ADBSAFE GATE PART (44A5875/2X1 (L-852G) OR IRLG-XXX1X (L-852G(L))) OR EQUAL, STYLE 3 LOW PROFILE.
6. LIGHT BEAM ORIENTATION FOR IN-PAVEMENT RGLS. THE L-868 BASES FOR IN-PAVEMENT RGLS MUST BE INSTALLED SUCH THAT A LINE THROUGH ONE PAIR OF BOLT HOLES ON OPPOSITE SIDES OF THE BASE IS PARALLEL TO THE RUNWAY HOLDING POSITION MARKING. EACH FIXTURE IS INSTALLED SO THAT THE LIGHT BEAM FACES AWAY FROM THE RUNWAY AND IS PERPENDICULAR TO THE RUNWAY HOLDING POSITION MARKING WITHIN A TOLERANCE OF ±1 DEGREE. FOR SOME PAVEMENT CONFIGURATIONS, IT MAY BE NECESSARY TO ORIENT THE LIGHTS AT SOME ANGLE TO THE MARKING. TO ACCOMPLISH THIS, INSTALL A 12-BOLT LIGHT BASE USING THE ABOVE PROCEDURE; THIS ALLOWS THE LIGHT FIXTURES TO BE ADJUSTED 30 DEGREES LEFT OR RIGHT, AS REQUIRED.

CAUTION:
THIS DRAWING IS ONLY INTENDED FOR USE AS GENERAL AIRFIELD SYSTEM DESIGN GUIDANCE.
THE DESIGNER MUST VERIFY DESIGN WITH LOCAL CODES AND VARYING CHARACTERISTICS FOR
EACH UNIQUE AIRFIELD APPLICATION.

						CONTROLLED COPY	
						Unauthorized duplication of this document in whole or part is prohibited. Initialed in RED ink below indicates authorized copy.	
						INITIAL & DATE:	
							
						P.O. Box 30829 Tel: (614) 861-1304 977 Gahanna Parkway Fax: (614) 864-2069 Columbus, OH 43230	
C	270	REFER EB 83	JEG	12JUN19	DRAWING TITLE: L-852G LED & F-RANGE IN-PAVEMENT FIXTURE INSTALLATION		
B	4228	MODIFY TORQUE VALUE	DLR	1MAR16			
A-01	----	RELEASE DRAWING	WH	03SEPT13			
REV LEVEL	ECO NUMBER	REVISION DESCRIPTION	DRAWN BY	REV DATE			
ASSOCIATED DRAWINGS:		DRAWN BY: WHALLAM	DRAWN DATE: 03 SEPT 2013				
Information contained on this drawing is to be used expressly in accord with purpose for which it was submitted. Any disclosure of this information is strictly prohibited except as ADBSAFE GATE, Inc. may otherwise agree in writing. Copyright © 2011 ADBSAFE GATE.					SCALE:	N/A	SHEET NUMBER: 1 OF 2
					DRAWING NUMBER:	117A0082	REV: C



2 PIECE BASE
INSTALLATION

LIGHT DETAIL NOTES:

1. LIGHT BASES SHALL BE INSTALLED WITH CARE TO ASSURE VERTICAL & AZIMUTH ALIGNMENT OF FIXTURE.
2. PROVIDE 2'-3' (600-900 mm) CABLE SLACK WITHIN LIGHT BASE TO ALLOW TRANSFORMER SERVICING.
3. REFER TO FAA ENGINEERING BRIEF 83 (LATEST REVISION) FOR RECOMMENDED INSTALLATION REQUIREMENTS INCLUDING BOLT, WASHER, AND TORQUE GUIDANCE.
4. AS REQUIRED TO MAINTAIN $+0/-\frac{3}{16}$ " (1.5mm) BELOW GRADE FAA INSTALLATION TOLERANCE. A MAXIMUM OF THREE SPACER RINGS MAY BE STACKED TOGETHER, INCLUDING FLANGE RING.
5. ADBSAFEGATE PART (44A5875/2X1 (L-852G) OR IRGL-XXXIX (L-852G(L))) OR EQUAL, STYLE 3 LOW PROFILE.
6. LIGHT BEAM ORIENTATION FOR IN-PAVEMENT RGLS. THE L-868 BASES FOR IN-PAVEMENT RGLS MUST BE INSTALLED SUCH THAT A LINE THROUGH ONE PAIR OF BOLT HOLES ON OPPOSITE SIDES OF THE BASE IS PARALLEL TO THE RUNWAY HOLDING POSITION MARKING. EACH FIXTURE IS INSTALLED SO THAT THE LIGHT BEAM FACES AWAY FROM THE RUNWAY AND IS PERPENDICULAR TO THE RUNWAY HOLDING POSITION MARKING WITHIN A TOLERANCE OF ± 1 DEGREE. FOR SOME PAVEMENT CONFIGURATIONS, IT MAY BE NECESSARY TO ORIENT THE LIGHTS AT SOME ANGLE TO THE MARKING. TO ACCOMPLISH THIS, INSTALL A 12-BOLT LIGHT BASE USING THE ABOVE PROCEDURE; THIS ALLOWS THE LIGHT FIXTURES TO BE ADJUSTED 30 DEGREES LEFT OR RIGHT, AS REQUIRED.

"EXAMPLE" SEQUENCE OF WORK:

STEP 1
ELECTRICAL CONTRACTOR LOCATES NEW LIGHT BASES AND INTERCONNECTING CONDUIT TRENCH, AND EXCAVATES FOR LIGHT BASE BOTTOM SECTION BY SAW CUTTING OR CORE DRILLING. ELECTRICAL CONTRACTOR PREPARES SUBGRADE AND STONE SUBBASE, SETS BOTTOM SECTION WITH REBAR, RIGID STEEL CONDUIT STUBS AND DRAIN, AND POURS HIGH EARLY STRENGTH CONCRETE-ENCASEMENT EXCAVATION. ELECTRICAL CONTRACTOR SHALL RECORD CAN LOCATIONS AND ELEVATIONS OF MUD PLATE AFTER CONCRETE-ENCASEMENT.

ELECTRICAL CONTRACTOR EXCAVATES CONDUIT TRENCH, INSTALLS RIGID STEEL AND FITTINGS, BACKFILLS CONDUIT TRENCH WITH HIGH EARLY STRENGTH CONCRETE.

STEP 2
GENERAL CONTRACTOR PREPARES AND INSTALLS CONCRETE PAVEMENT. ELECTRICAL CONTRACTOR MAKES A PILOT CORE TO FIND MUD PLATE CENTER POINT INDENT BEFORE FINAL CORE-DRILLING.

STEP 3
ELECTRICAL CONTRACTOR CORE-DRILLS CONCRETE PAVEMENT. ELECTRICAL CONTRACTOR INSTALLS TOP SECTION, Y-FLANGE RING, SPACE AND LIGHTING FIXTURE, AND POURS EPOXY JOINT SEALER. PROVIDE SPACE FOR ADJUSTMENT WITH SPACERS, MAXIMUM NUMBER OF SPACERS SHALL BE 3.

CAUTION:
THIS DRAWING IS ONLY INTENDED FOR USE AS GENERAL AIRFIELD SYSTEM DESIGN GUIDANCE. THE DESIGNER MUST VERIFY DESIGN WITH LOCAL CODES AND VARYING CHARACTERISTICS FOR EACH UNIQUE AIRFIELD APPLICATION.

						CONTROLLED COPY	
						Unauthorized duplication of this document in whole or part is prohibited. Initialed in RED ink below indicates authorized copy.	
						INITIAL & DATE: _____	
						<div>ADB SAFEGATE</div> <div>P.O. Box 30829 Tel: (614) 861-1304</div> <div>977 Gahanna Parkway Fax: (614) 864-2069</div> <div>Columbus, OH 43230</div>	
C	270	REFER EB 83	JEG	12JUN19	DRAWING TITLE: L-852G LED & F-RANGE IN-PAVEMENT FIXTURE INSTALLATION		
B	4228	MODIFY TORQUE VALUE	DLR	1MAR16			
A-01	----	RELEASE DRAWING	WH	03SEPT13			
REV	ECO	REVISION DESCRIPTION	DRAWN	REV			
	LEVEL	NUMBER		BY		DATE	
ASSOCIATED DRAWINGS:		DRAWN BY: WHALLAM		DRAWN DATE: 03 SEPT 2013			
Information contained on this drawing is to be used expressly in accord with purpose for which it was submitted. Any disclosure of this information is strictly prohibited except as ADBSAFEGATE, Inc. may otherwise agree in writing. Copyright © 2011 ADBSAFEGATE.							
SCALE: N/A						SHEET NUMBER: 2 OF 2	
DRAWING NUMBER: 117A0082						REV: C	