



ERET-CB Incandescent Elevated Runway Edge/Threshold Light
HIGH-INTENSITY, CLAMP BAND

Spare Parts

SP_1201, Rev. A, 2020/09/04


**ADB
SAFEGATE**

A.0 Disclaimer / Standard Warranty

CE certification

The equipment listed as CE certified means that the product complies with the essential requirements concerning safety and hygiene. The European directives that have been taken into consideration in the design are available on written request to ADB SAFEGATE.

ETL certification

The equipment listed as ETL certified means that the product complies with the essential requirements concerning safety and FAA Airfield regulations. The FAA directives that have been taken into consideration in the design are available on written request to ADB SAFEGATE.

All Products Guarantee

ADB SAFEGATE will correct by repair or replacement per the applicable guarantee above, at its option, equipment or parts which fail because of mechanical, electrical or physical defects, provided that the goods have been properly handled and stored prior to installation, properly installed and properly operated after installation, and provided further that Buyer gives ADB SAFEGATE written notice of such defects after delivery of the goods to Buyer. Refer to the Safety section for more information on Material Handling Precautions and Storage precautions that must be followed.

ADB SAFEGATE reserves the right to examine goods upon which a claim is made. Said goods must be presented in the same condition as when the defect therein was discovered. ADB SAFEGATE further reserves the right to require the return of such goods to establish any claim.

ADB SAFEGATE's obligation under this guarantee is limited to making repair or replacement within a reasonable time after receipt of such written notice and does not include any other costs such as the cost of removal of defective part, installation of repaired product, labor or consequential damages of any kind, the exclusive remedy being to require such new parts to be furnished.

ADB SAFEGATE's liability under no circumstances will exceed the contract price of goods claimed to be defective. Any returns under this guarantee are to be on a transportation charges prepaid basis. For products not manufactured by, but sold by ADB SAFEGATE, warranty is limited to that extended by the original manufacturer. This is ADB SAFEGATE's sole guarantee and warranty with respect to the goods; there are no express warranties or warranties of fitness for any particular purpose or any implied warranties of fitness for any particular purpose or any implied warranties other than those made expressly herein. All such warranties being expressly disclaimed.

Standard Products Guarantee

Products of ADB SAFEGATE manufacture are guaranteed against mechanical, electrical, and physical defects (excluding lamps) which may occur during proper and normal use for a period of two years from the date of ex-works delivery, and are guaranteed to be merchantable and fit for the ordinary purposes for which such products are made.



Note

See your sales order contract for a complete warranty description.

FAA Certified product installed in the United States and purchased or funded with monies through the Airport Improvement Program (AIP) installations guarantee

ADB SAFEGATE L858 Airfield Guidance Signs are warranted against mechanical and physical defects in design or manufacture for a period of 2 years from date of installation, per FAA AC 150/5345-44 (applicable edition).

ADB SAFEGATE L858(L) Airfield Guidance Signs are warranted against electrical defects in design or manufacture of the LED or LED specific circuitry for a period of 4 years from date of installation, per FAA EB67 (applicable edition).

ADB SAFEGATE LED light fixtures (with the exception of obstruction lighting) are warranted against electrical defects in design or manufacture of the LED or LED specific circuitry for a period of 4 years from date of installation, per FAA EB67 (applicable edition).



Note

See your sales order contract for a complete warranty description.

Liability



WARNING

Use of the equipment in ways other than described in the catalog leaflet and the manual may result in personal injury, death, or property and equipment damage. Use this equipment only as described in the manual.

ADB SAFEGATE cannot be held responsible for injuries or damages resulting from non-standard, unintended uses of its equipment. The equipment is designed and intended only for the purpose described in the manual. Uses not described in the manual are considered unintended uses and may result in serious personal injury, death or property damage.

Unintended uses, includes the following actions:

- Making changes to equipment that have not been recommended or described in this manual or using parts that are not genuine ADB SAFEGATE replacement parts or accessories.
- Failing to make sure that auxiliary equipment complies with approval agency requirements, local codes, and all applicable safety standards if not in contradiction with the general rules.
- Using materials or auxiliary equipment that are inappropriate or incompatible with your ADB SAFEGATE equipment.
- Allowing unskilled personnel to perform any task on or with the equipment.

© ADB SAFEGATE BV

This manual or parts thereof may not be reproduced, stored in a retrieval system, or transmitted, in any form or by any means, electronic, mechanical, photocopying, recording, nor otherwise, without ADB SAFEGATE BV's prior written consent.

This manual could contain technical inaccuracies or typographical errors. ADB SAFEGATE BV reserves the right to revise this manual from time to time in the contents thereof without obligation of ADB SAFEGATE BV to notify any person of such revision or change. Details and values given in this manual are average values and have been compiled with care. They are not binding, however, and ADB SAFEGATE BV disclaims any liability for damages or detriments suffered as a result of reliance on the information given herein or the use of products, processes or equipment to which this manual refers. No warranty is made that the use of the information or of the products, processes or equipment to which this manual refers will not infringe any third party's patents or rights. The information given does not release the buyer from making their own experiments and tests.

TABLE OF CONTENTS

1.0 Safety	1
1.1 Safety Messages	1
1.1.1 Introduction to Safety	2
1.1.2 Intended Use	2
1.1.3 Material Handling Precautions: Storage	3
2.0 Introduction	5
2.1 Incandescent Elevated Runway Edge/ Threshold Light	7
2.2 L-862/L-862E Light Fixture: Required Equipment	8
2.3 Specifications	9
2.3.1 Lamp	9
3.0 Parts	11
3.1 44A2071– X 1 X X	12
3.2 Socket Mounting Plate Assembly Parts List	16
3.3 Optional Stake Assembly Parts List	17
3.4 L-867 Base Plate Parts List	18
3.5 Recommended Spare Parts	18
A.0 SUPPORT	21
A.1 ADB SAFEGATE Website	21
A.2 Recycling	22
A.2.1 Local Authority Recycling	22
A.2.2 ADB SAFEGATE Recycling	22

1.0 Safety

Introduction to Safety






This section contains general safety instructions for installing and using ADB SAFEGATE equipment. Some safety instructions may not apply to the equipment in this manual. Task- and equipment-specific warnings are included in other sections of this manual where appropriate.

1.1 Safety Messages


HAZARD Icons used in the manual

For all HAZARD symbols in use, see the Safety section. All symbols must comply with ISO and ANSI standards.

Carefully read and observe all safety instructions in this manual, which alert you to safety hazards and conditions that may result in personal injury, death or property and equipment damage and are accompanied by the symbol shown below.

	WARNING Failure to observe a warning may result in personal injury, death or equipment damage.
	DANGER - Risk of electrical shock or ARC FLASH Disconnect equipment from line voltage. Failure to observe this warning may result in personal injury, death, or equipment damage. ARC Flash may cause blindness, severe burns or death.
	WARNING - Wear personal protective equipment Failure to observe may result in serious injury.
	WARNING - Do not touch Failure to observe this warning may result in personal injury, death, or equipment damage.
	CAUTION Failure to observe a caution may result in equipment damage.

Qualified Personnel

	Important Information The term qualified personnel is defined here as individuals who thoroughly understand the equipment and its safe operation, maintenance and repair. Qualified personnel are physically capable of performing the required tasks, familiar with all relevant safety rules and regulations and have been trained to safely install, operate, maintain and repair the equipment. It is the responsibility of the company operating this equipment to ensure that its personnel meet these requirements. Always use required personal protective equipment (PPE) and follow safe electrical work practice.
---	--

1.1.1 Introduction to Safety



CAUTION

Unsafe Equipment Use

This equipment may contain electrostatic devices, hazardous voltages and sharp edges on components

- Read installation instructions in their entirety before starting installation.
- Become familiar with the general safety instructions in this section of the manual before installing, operating, maintaining or repairing this equipment.
- Read and carefully follow the instructions throughout this manual for performing specific tasks and working with specific equipment.
- Make this manual available to personnel installing, operating, maintaining or repairing this equipment.
- Follow all applicable safety procedures required by your company, industry standards and government or other regulatory agencies.
- Install all electrical connections to local code.
- Use only electrical wire of sufficient gauge and insulation to handle the rated current demand. All wiring must meet local codes.
- Route electrical wiring along a protected path. Make sure they will not be damaged by moving equipment.
- Protect components from damage, wear, and harsh environment conditions.
- Allow ample room for maintenance, panel accessibility, and cover removal.
- Protect equipment with safety devices as specified by applicable safety regulations
- If safety devices must be removed for installation, install them immediately after the work is completed and check them for proper functioning prior to returning power to the circuit.

Failure to follow this instruction can result in serious injury or equipment damage

Additional Reference Materials



Important Information

- IEC - International Standards and Conformity Assessment for all electrical, electronic and related technologies.
- IEC 60364 - Electrical Installations in Buildings.
- FAA Advisory: AC 150/5340-26 (current edition), Maintenance of Airport Visual Aid Facilities.
- Maintenance personnel must refer to the maintenance procedure described in the ICAO Airport Services Manual, Part 9.
- ANSI/NFPA 79, Electrical Standards for Metalworking Machine Tools.
- National and local electrical codes and standards.

1.1.2 Intended Use



CAUTION

Use this equipment as intended by the manufacturer

This equipment is designed to perform a specific function, do not use this equipment for other purposes

- Using this equipment in ways other than described in this manual may result in personal injury, death or property and equipment damage. Use this equipment only as described in this manual.

Failure to follow this instruction can result in serious injury or equipment damage

1.1.3 Material Handling Precautions: Storage



CAUTION

Improper Storage

Store this equipment properly

- If equipment is to be stored prior to installation, it must be protected from the weather and kept free of condensation and dust.

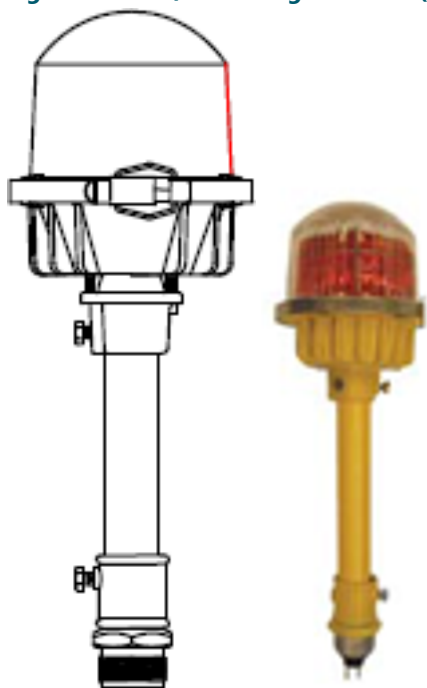
Failure to follow this instruction can result in equipment damage

2.0 Introduction

This section describes the L-862/L-862E high intensity runway/threshold lights. The ADB Safegate L-862 white-white, white-yellow, red-blue, or white-red light fixture is used for runway edge lighting. The L-862E light fixture with red-green, red-red, or green-green outer globe is used for runway threshold and runway end lighting.

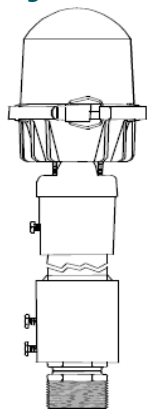
See [Figure 1](#) for the standard L-862 light fixture with 1-in. column for installation in a base plate with a 1.5–12 threaded hub.

Figure 1: L-862/L-862E Light Fixture (Standard 1-in. [25.4-mm] Column)



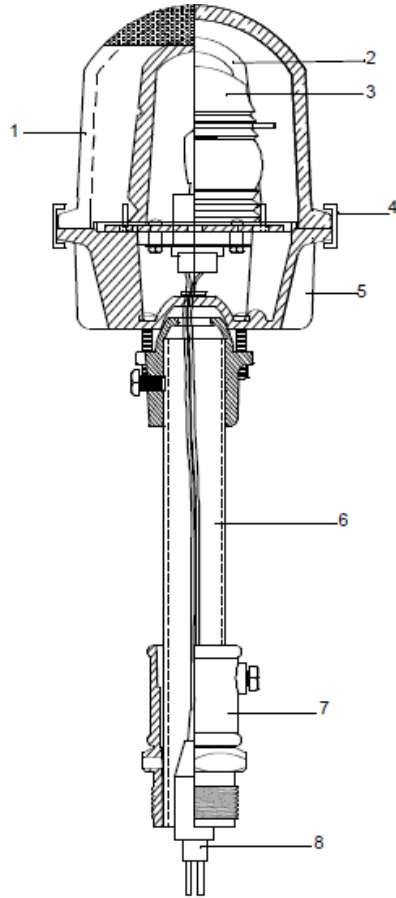
See [Figure 2](#) for light fixture with optional 2-inch (50.8-mm) column assembly for installation in an L-867 base cover plate with a 2-inch (50.8-mm) threaded hub.

Figure 2: L-862/L-862E Light Fixture (2-in. [50.8-mm] Column)



See [Figure 3](#) . The L-862/L-862E light fixture consists of the following: a pair of inner lens doublets (3) coupled with an outer globe (1) continuous clamping band (4) inner spring clip (2) to hold two 180-degree inner lens segments frangible coupling (7) that threads into a 1-1/2–12 NPT tapped hole in either a 30-inch (762-mm) stake assembly or a 12-inch-diameter L-867 base cover plate.

Figure 3: Cutaway View of L-862/L-862E Light Fixture



- | | | |
|------------------------|---------------------|-----------------------|
| 1. Outer Globe | 4. Globe Clamp Band | 7. Frangible Coupling |
| 2. Inner Spring Clip | 5. Head Assembly | 8. L-823 Cordset |
| 3. Inner Lens Segments | 6. Column | |

The cast aluminum head and base assembly can be mounted on a standard L-867 base plate or on a steel stake. Base mounting is easier to maintain and provides added protection for the equipment. Stake-mounted lights require transformers, cables, and connectors that are designed for direct earth burial. Refer to [Table 1](#) for mounting heights.

Note The measurements in Table 1 are taken from the grade to the top of the light fixture.

Table 1: Mounting Heights

Type	Height (in.)	Height (mm)
Standard (FAA minimum)	14	355.6
Standard	24	610
Standard (FAA maximum)	30	762

The L-862/L862E light fixture is available with bidirectional red-green, clear-yellow, red- yellow, green-yellow, clear, red, yellow, green, and blue lenses.

2.1 Incandescent Elevated Runway Edge/ Threshold Light

Compliance with Standards

FAA:	L-862 and L-862E AC 150/5345-46 (Current Edition). ETL Certified.
------	---

Uses

- | | |
|-------------------|--|
| FAA L-862 | <ul style="list-style-type: none"> Runway edge Precision approach runways |
| FAA L-862E | <ul style="list-style-type: none"> Runway threshold/end Precision approach runways |

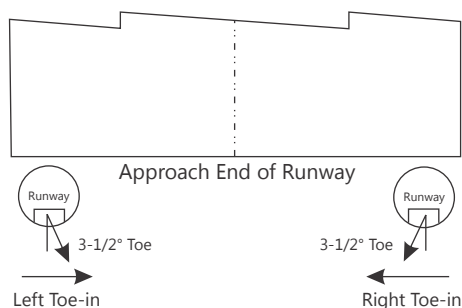
Features

- Light fixture is designed to withstand jet blast
- Lamp Life: Rated at 500-1,000 hours at 6.6 A
- Top casting holds the outer globe, which is indexed to the fixture and held in place by a continuous clamping band. Two prismatic inner lens segments are mounted inside on the socket mounting plate.
- Three screws allow a 4° leveling adjustment of the fixture after installation
- Fixture uses aluminum castings, stainless steel hardware, and is protected with aviation yellow gloss enamel paint

Operating Conditions

Temperature:	−40 °F to +131 °F / −40 °C to +55 °C
Wind:	Withstands wind velocities up to 300 mph / 480 kph

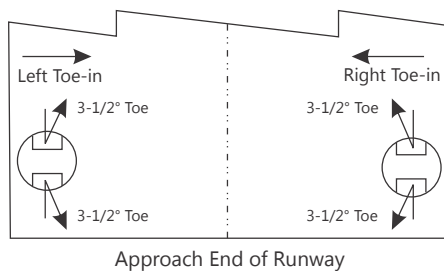
Installation of L-862E to Runway Centerline



Note

- L-862E is toed on one side only
- Position the fixtures on either side of the runway so that the arrow embossed on the top of the outer glassware points to the runway centerline

Installation of L-862 to Runway Centerline



Note

- L-862 is toed on two sides
- Position the fixtures on either side of the runway so that the arrow embossed on the top of the outer glassware points to the runway centerline
- Fixtures can also be supplied with one side obscured
- Unless otherwise specified, bicolored fixtures will be provided with half of the number ordered for right side of runway and the other half for the left side. For odd quantities please specify colored lens side as right or left as viewed from runway centerline.

Packaging

Assembled Fixtures	Dimensions of Cartons in (cm)		Indiv. Weight
	Individual	8 Per Box	
14-inch OAH	6.5 × 6.5 × 20.5	19.5 × 19.5 × 20.5	5 lb
	(17 × 17 × 52)	(50 × 50 × 52)	2.3 kg
24-inch OAH	6.5 × 6.5 × 31	19.5 × 19.5 × 31	6.25 lb
	(17 × 17 × 79)	(50 × 50 × 79)	2.8 kg
30-inch OAH	6.5 × 6.5 × 37	19.5 × 19.5 × 37	7 lb
	(17 × 17 × 94)	(50 × 50 × 94)	3.2 kg

Note: If the two-inch coupling is used instead of the one-and-half-inch coupling, the couplings are packed separately and not pre-assembled on the fixture. Box size depends on quantity.

2.2 L-862/L-862E Light Fixture: Required Equipment

Refer to [Table 2](#) for required equipment that is supplied. Refer to [Table 3](#) for required equipment that is not supplied. Refer to the *Parts* section for ordering information.

Table 2: Required Equipment Supplied

Description	Quantity
L-862/L-862E light fixture (includes lamp, column, frangible coupling, and L-823 cordset)	1
Instruction manual	1 per order

Table 3: Required Equipment Not Supplied

Description	Quantity
Torque wrench (0—200 inch-pounds) with 9/16 socket	1
Screwdriver, #2 Phillips	1
L-867 base plate (12 or 16 inches in diameter) and L-867 base when base mounted.	1
Stake assembly, 30-inch galvanized steel. Used only when fixture is stake mounted.	1
L-830 isolation transformer for series circuit. Refer to Table 4 for the appropriate transformer.	1
Single conductor (primary) connector kit	1
Loctite Grade AV or equivalent	As required

Table 4: Isolation Transformers

For a...	When you use this lamp...	Then use this isolation transformer...
6.6 A series circuit	100 W, 110W and 120 W	L-830-4, 100 W 6.6/6.6
	150 W, 200 W	L-830-18, 150 W, 6.6/6.6
20 A series circuit	110 W/120 W	L-830-5, 100 W, 20/6.6
	150 W, 200 W	L-830-19, 150 W, 20/6.6

Table 5: Lamp used

Assembly Order Code	Lamp Part Number	Lamp Description
44A2071/0XXX	---	NO LAMP
44A2071/1XXX	48A0069	LAMP, 110-120W
44A2071/2XXX	48A0044	LAMP, 150W
44A2071/4XXX	48A0145	LAMP, 200W
44A2071/5XXX	48A0380	LAMP, 100W, PKX30d

2.3 Specifications

This subsection provides specifications for the L-862/L-862E light fixtures.

2.3.1 Lamp

Refer to [Table 5](#).

Rated Lamp Life

500 hours (minimum)

3.0 Parts

To order parts, call ADB Safegate Customer Service or your local representative. Use this five-column parts list, and the accompanying illustration, to describe and locate parts correctly.

L-862E Ordering Code

Lamp
1 = 110-120 W/6.6 A Quartz
4 = 200 W/6.6 A Quartz (ETL Certified)

Inner Lens Color
1 = White/White

Fixture Height
1 = 14 in (35.6 cm) with 1.5" coupling, 12 TPI
2 = 24 in (61.0 cm) with 1.5" coupling, 12 TPI
3 = 30 in (76.2 cm) with 1.5" coupling, 12 TPI
4 = 14 in (35.66 cm) with 2" swivel head, 11.5 TPI¹
5 = 24 in (61.0 cm) with 2" swivel head, 11.5 TPI¹
6 = 30 in (76.2 cm) with 2" swivel head, 11.5 TPI¹
7 = 14 in (35.6 cm) with 2" coupling, 11.5 TPI

Outer Lens
4 = Red/Green Right Hand (ETL Certified)
5 = Red/Green Left Hand (ETL Certified)
6 = Red/Red (ETL Certified)
7 = Green/Obscured Right Hand (ETL Certified)
8 = Green/Obscured Left Hand (ETL Certified)
9 = Red/Obscured Right Hand (ETL Certified)
0 = Red/Obscured Left Hand (ETL Certified)

L-862 Ordering Code

Lamp
0 = None
1 = 110-120 W/6.6 A Quartz⁵
2 = 150 W/6.6 A Quartz (ETL Certified)⁵
4 = 200 W/6.6 A Quartz (ETL Certified)⁴
5 = 100 W/6.6 A, PK30d⁵

Inner Lens Color
0 = None
1 = Bidirectional White/White (ETL Certified)
2 = Bidirectional White/Yellow (ETL Certified)³
3 = Red/Red²
4 = Yellow/Yellow²
5 = Green/Green²
7 = Bidirectional Red/Yellow³
8 = Bidirectional Yellow/Green³
A = Bidirectional White/Red³

Fixture Height
1 = 14 in (35.6 cm) with 1.5" coupling, 12 TPI
2 = 24 in (61.0 cm) with 1.5" coupling, 12 TPI
3 = 30 in (76.2 cm) with 1.5" coupling, 12 TPI
4 = 14 in (35.66 cm) with 2" swivel head, 11.5 TPI¹
5 = 24 in (61.0 cm) with 2" swivel head, 11.5 TPI¹
6 = 30 in (76.2 cm) with 2" swivel head, 11.5 TPI¹
7 = 14 in (35.6 cm) with 2" coupling, 11.5 TPI

Outer Lens
1 = White/White (ETL Certified)
9 = Red/Obscured Right Hand (ETL Certified)
0 = Red/Obscured Left Hand (ETL Certified)
A = Red/White Right Hand (ETL Certified)
B = Red/White Left Hand (ETL Certified)
C = Green/Yellow Right Hand (ETL Certified)
D = Green/Yellow Left Hand (ETL Certified)
E = Red/Yellow Right Hand (ETL Certified)
F = Red/Yellow Left Hand (ETL Certified)

Notes for L-862 and L-862E

- See Ordering Code for ETL Certification.
- This option is for a fixture with 2-inch column where robust applications are required.
- Color and/or color configuration not recognized by the FAA.
- When ordering fixtures with two different inner lens colors, indicate the number of fixtures to be toed left and the number to be toed right. Unless specified, order will be filled with half right toed and half left toed fixtures.
- For 200 W lamps, inner lenses must be white or white/yellow.
- For 100 W, 110-120 W and 150 W lamps, outer lenses must be white.

44A2071 - X 1 X X

44A2071 - X X X X

Table 6: Lamp used

Assembly Order Code	Lamp Part Number	Lamp Description
44A2071/0XXX	---	NO LAMP
44A2071/1XXX	48A0069	LAMP, 110-120W
44A2071/2XXX	48A0044	LAMP, 150W
44A2071/4XXX	48A0145	LAMP, 200W
44A2071/5XXX	48A0380	LAMP, 100W, PKX30d

3.1 44A2071– X 1 X X.

Figure 4: L-862 Light Fixture Ordering Code

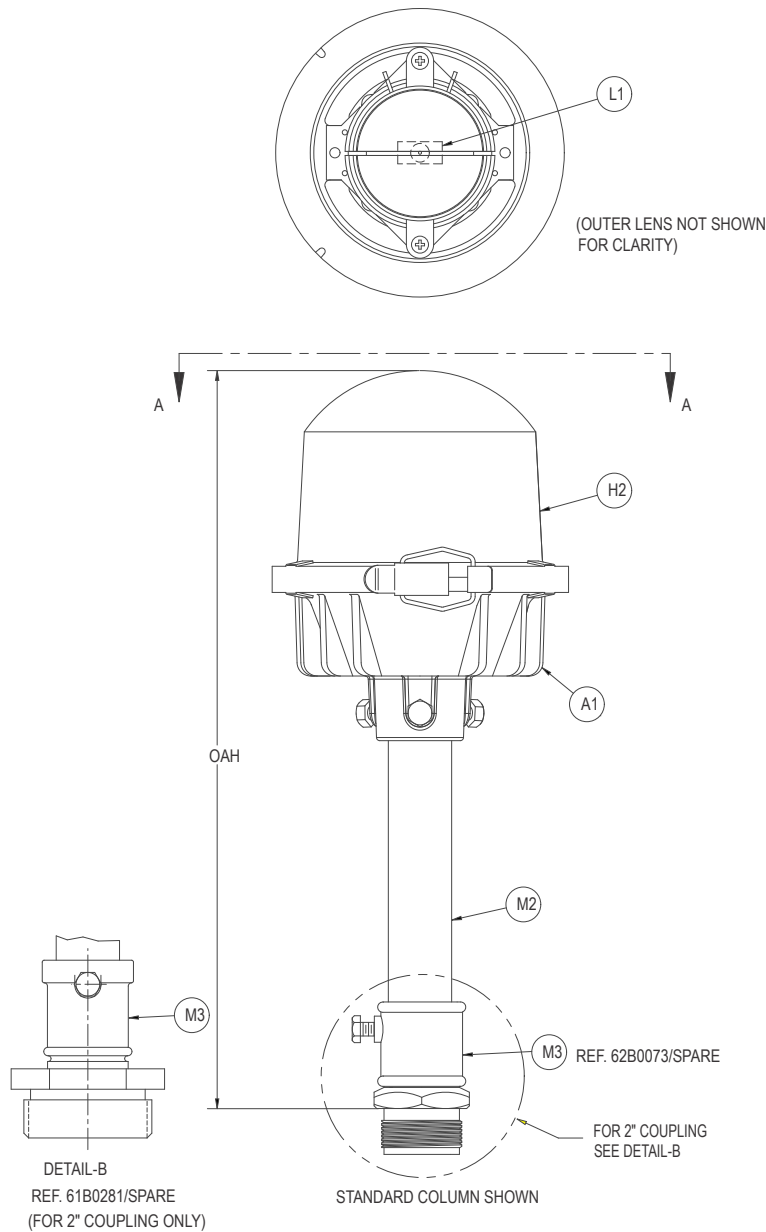


Table 7: Inner Lens Assembly

ASSEMBLY NUMBER	PART NUMBER	ITEM NO.	PART NAME/DESCRIPTION	QTY.
44A2071/X0XX	-	H1L	(NO LENS)	0
	-	H1R	(NO LENS)	0
44A2071/X1XX	63B0415/1	H1L	INNER LENS, CLEAR	1
	63B0415/1	H1R	INNER LENS, CLEAR	1
44A2071/X2XX	63B0415/1	H1L	INNER LENS, CLEAR	1
	63B0415/2	H1R	INNER LENS, YELLOW	1

Table 7: Inner Lens Assembly (continued)

ASSEMBLY NUMBER	PART NUMBER	ITEM NO.	PART NAME/DESCRIPTION	QTY.
44A2071/X3XX	63B0415/3	H1L	INNER LENS, RED	1
	63B0415/3	H1R	INNER LENS, RED	1
44A2071/X4XX	63B0415/2	H1L	INNER LENS, YELLOW	1
	63B0415/2	H1R	INNER LENS, YELLOW	1
44A2071/X5XX	63B0415/4	H1L	INNER LENS, GREEN	1
	63B0415/4	H1R	INNER LENS, GREEN	1
44A2071/X6XX	63B0415/3	H1L	INNER LENS, RED	1
	63B0415/4	H1R	INNER LENS, GREEN	1
44A2071/X7XX	63B0415/3	H1L	INNER LENS, RED	1
	63B0415/2	H1R	INNER LENS, YELLOW	1
44A2071/X8XX	63B0415/4	H1L	INNER LENS, GREEN	1
	63B0415/2	H1R	INNER LENS, YELLOW	1
44A2071/X9XX	63B0415/5	H1L	INNER LENS, BLUE	1
	63B0415/5	H1R	INNER LENS, BLUE	1
44A2071/XAXX	63B0415/1	H1L	INNER LENS, CLEAR	1
	63B0415/3	H1R	INNER LENS, RED	1
44A2071/XBXX	63B0415/5	H1L	INNER LENS, BLUE	1
	63B0415/3	H1R	INNER LENS, RED	1
44A2071/XCXX	63B0415/2	H1L	INNER LENS, YELLOW	1
	63B0415/5	H1R	INNER LENS, BLUE	1

Table 8: Head and Column Assembly

ASSEMBLY NUMBER	PART NUMBER	ITEM NO.	PART NAME/DESCRIPTION	QTY.
44A2071/XX1X	44A2066/1	A1	HEAD ASSY FOR 14" OAH	1
44A2071/XX7X	62A0007/7	M2	7 1/4" COLUMN FOR 14" OAH	1
44A2071/XX2X	44A2066/2	A1	HEAD ASSY FOR 24" OAH	1
44A2071/XX8X	62A0007/17	M2	17 1/4" COLUMN FOR 24" OAH	1
44A2071/XX3X	44A2066/3	A1	HEAD ASSY FOR 30" OAH	1
44A2071/XX9X	62A0007/23	M2	23 1/4" COLUMN FOR 30" OAH	1
44A2071/XXAX	44A6241/1	A1	L862Q HEAD ASY 14" OAH PK30d LAMP	1
	62A0007/7	M2	7 1/4" COLUMN FOR 14" OAH	1
44A2071/XXBX	44A6241/2	A1	L862Q HEAD ASY 24" OAH PK30d LAMP	1
	62A0007/17	M2	17 1/4" COLUMN FOR 24" OAH	1
44A2071/XXCX	44A6241/3	A1	L862Q HEAD ASY 30" OAH PK30d LAMP	1
	62A0007/23	M2	23 1/4" COLUMN FOR 30" OAH	1

Table 9: Head and Column Assembly

44A2071/XX4X	44A2066/4	A1	HEAD ASSY FOR 14" OAH	1
	44A0907/3	M2	EXTENSION FOR 14" OAH	1
44A2071/XX5X	44A2066/5	A1	HEAD ASSY FOR 24" OAH	1
	44A0907/4	M2	EXTENSION FOR 24" OAH	1
44A2071/XX6X	44A2066/6	A1	HEAD ASSY FOR 30" OAH	1
	44A0907/5	M2	EXTENSION FOR 30" OAH	1
44A2071/XXDX	44A6241/4	A1	L862Q HEAD ASY 14" OAH PK30d LAMP	1
	44A0907/3	M2	L862Q EXT FOR 14"OAH	1
44A2071/XXEX	44A6241/5	A1	L862Q HEAD ASY 24" OAH PK30d LAMP	1
	44A0907/4	M2	L862Q EXT FOR 24"OAH	1
44A2071/XXFX	44A6241/6	A1	L862Q HEAD ASY 30" OAH PK30d LAMP	1
	44A0907/5	M2	L862Q EXT FOR 30"OAH	1

Table 10: Outer Lens Assemblies

ASSEMBLY NUMBER	PART NUMBER	ITEM NO.	PART NAME/DESCRIPTION	QTY.
44A2071/XXX1	63B0416	H2	OUTER LENS, CLEAR	1
44A2071/XXX2	63B0545/1	H2	OUTER LENS, OBSCURED LH*	1
44A2071/XXX3	63B0545/2	H2	OUTER LENS, OBSCURED RH*	1
44A2071/XXX4	63A0601	H2	OUTER LENS, RED/GREEN RH*	1
44A2071/XXX5	63A0602	H2	OUTER LENS, RED GREEN LH*	1
44A2071/XXX6	63A0607	H2	OUTER LENS, RED/RED	1
44A2071/XXX7	63A0606/2	H2	OUTER LENS, GREEN/OBSCURED, RH	1
44A2071/XXX8	63A0606/1	H2	OUTER LENS, GREEN/OBSCURED, LH	1
44A2071/XXX9	63A0608/2	H2	OUTER LENS, RED/OBSCURED, RH	1
44A2071/XXX0	63A0608/1	H2	OUTER LENS, RED/OBSCURED, LH	1
44A2071/XXXA	63A1057/1	H2	OUTER LENS, RED/CLEAR, RH	1
44A2071/XXXB	63A1057/2	H2	OUTER LENS, CLEAR/RED, LH	1
44A2071/XXXC	63A1105/1	H2	OUTER LENS, YELLOW/GREEN, RH	1
44A2071/XXXD	63A1105/2	H2	OUTER LENS, YELLOW/GREEN, LH	1
44A2071/XXXE	63A1105/3	H2	OUTER LENS, RED/YELLOW, RH	1
44A2071/XXXF	63A1105/4	H2	OUTER LENS, RED/YELLOW, LH	1

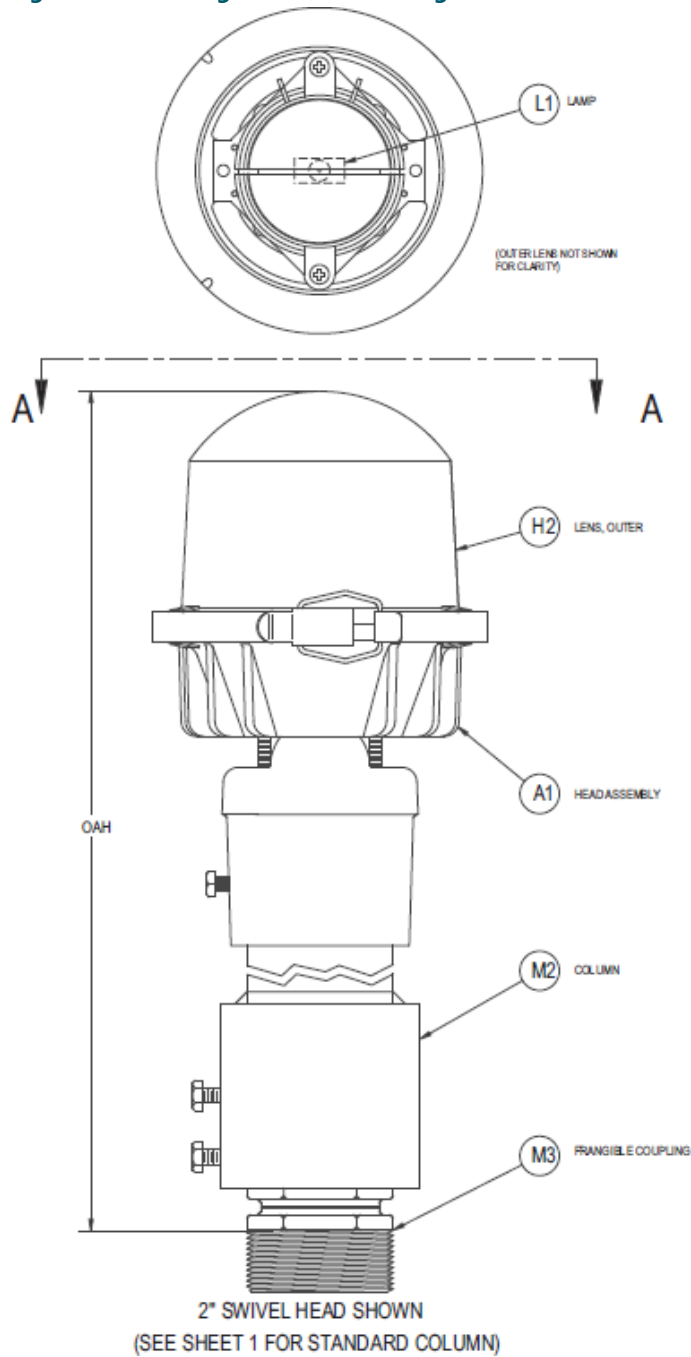
Table 11: Coupling

ASSEMBLY NUMBER	PART NUMBER	ITEM NO.	PART NAME/DESCRIPTION	QTY.
44A2071/XX1X	62B0073/SPARE	M3	14" OAH, 1-1/2" COUPLING	1
44A2071/XX2X	62B0073/SPARE	M3	24" OAH, 1-1/2" COUPLING	1
44A2071/XX3X	62B0073/SPARE	M3	30" OAH, 1-1/2" COUPLING	1
44A2071/XX7X	61A0281/SPARE	M3	14" OAH, 2" COUPLING	1

Table 11: Coupling (continued)

ASSEMBLY NUMBER	PART NUMBER	ITEM NO.	PART NAME/DESCRIPTION	QTY.
44A2071/XX8X	61A0281/SPARE	M3	24" OAH, 2" COUPLING	1
44A2071/XX9X	61A0281/SPARE	M3	30" OAH, 2" COUPLING	1
44A2071/XXGX	61A0350/SPARE	M3	14" OAH, 2" 11 TPI COUPLING	1

Figure 5: L-862E Light Fixture Ordering Code

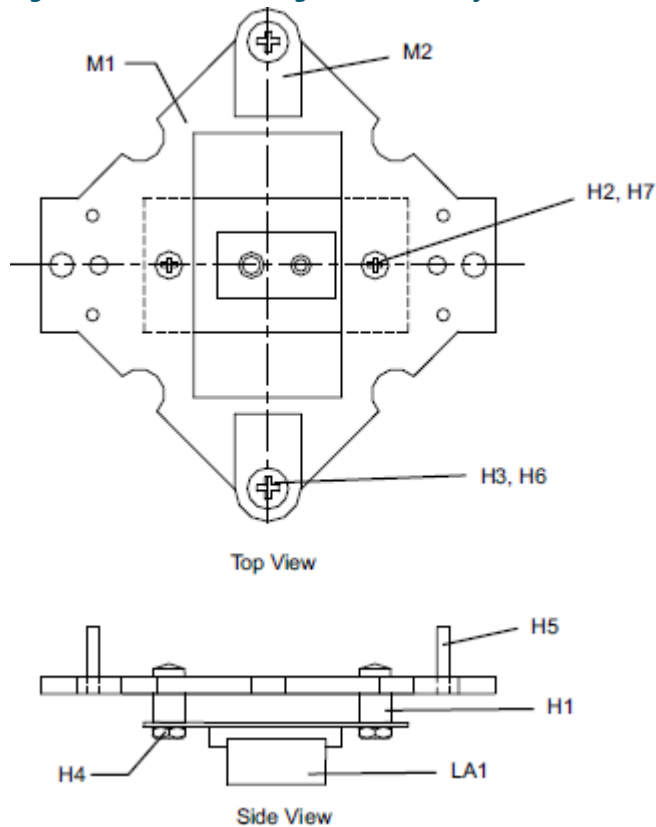


3.2 Socket Mounting Plate Assembly Parts List

See [Figure 6](#) . The socket mounting plate assembly part number is 44A2089.

Item	Description	Part Number	Quantity
M2	Filter clip, L-862	60C2041	2
H1	Spacer	61A0282	2
LA1	Socket, lamp	49A0032	1
M1	Socket plate	60C1173	1
H2	Screw, pan head, 8-32 x 3/8 in.	64A0191-6	2
H6	Washer, #4	66A0026-7	2
H3	Screw, pan head, 4-40 x 5/8 in.	64A0169-10	2
H7	Washer, #8	66A0026-15	2
H5	Pin, spring, 3-32 x 1/2	65A0218	4
H4	Nut, hex, 4-40	65A0015-7	2

Figure 6: Socket Mounting Plate Assembly

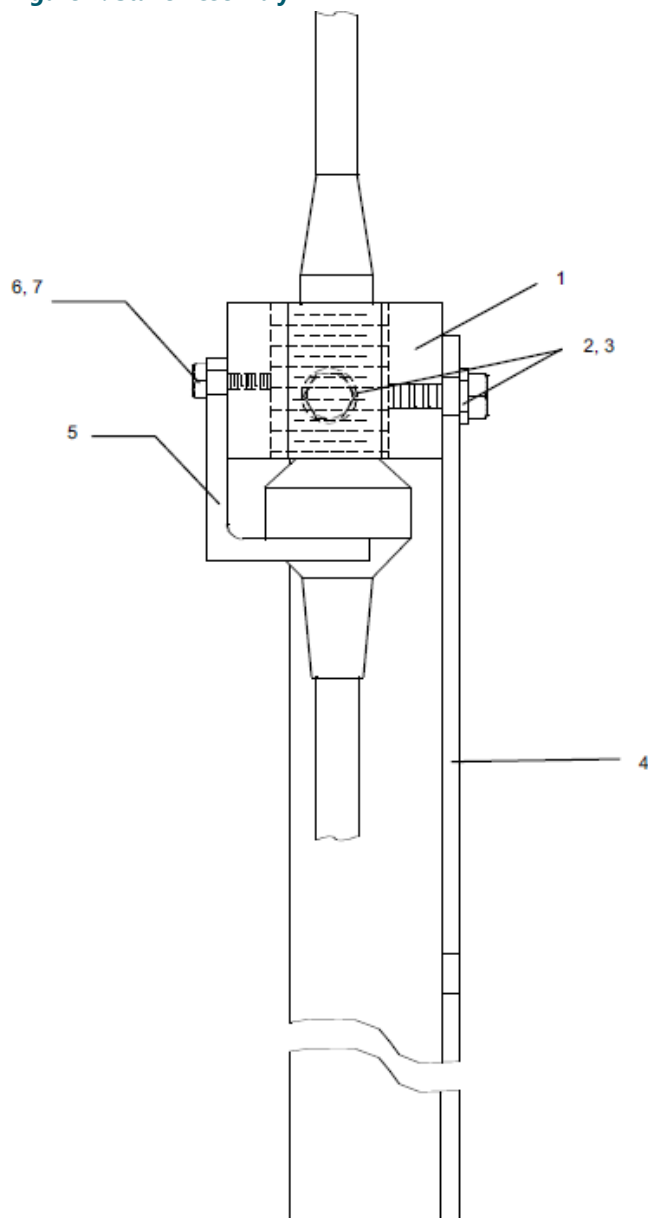


3.3 Optional Stake Assembly Parts List

See [Figure 7](#) . The stake assembly part number is 44B0348.

Item	Description	Part Number	Quantity
1	Stake hub	62B0268-1	1
2	Hex head screw, 3/8–16 x 3/4 in.	64A0176-12	1
3	Split lockwasher, 3/8 in.	66A0026-29	1
4	Stake	62B0284	1
5	Cable connector support	62B0269	1
6	Hex head screw, 1/4–20 x 3/4 in.	64A0173-12	1
7	Split lockwasher, 1/4 in.	66A0026-24	1

Figure 7: Stake Assembly



3.4 L-867 Base Plate Parts List

Refer below for the L-867 base plate parts list.

Part Number	Description	Quantity	Note
1935	12-inch-diameter base plate, 1.5–12 UNF tap	1	A
NOTE A: Supplied with gasket.			

3.5 Recommended Spare Parts

Table 12: Possible Spare Parts

Description	Part No.
Column 1", 7.25" (18.42 cm) for 14" OAH	62A0007-7
Column 1", 17.25" (43.82 cm) for 24" OAH	62A0007-17
Column 1", 23.25" (59.06 cm) for 30" OAH	62A0007-23
Column 2", 7.25" (18.42 cm) for 14" OAH	44A0907-3
Column 2", 17.25" (43.82 cm) for 24" OAH ¹	44A0907-4
Column 2", 23.25" (59.06 cm) for 30" OAH ¹	44A0907-5
Filter clip	60C2041
Frangible coupling, 1.5 inch, 12 TPI	62B0073/SPARE
Frangible coupling, 1.5 inch, 12 TPI, with slot	62B0461/SPARE
Frangible coupling, 2 inch, 11.5 TPI	44A7239
Clamp band assembly	44A2060
Gasket	63A0640
Head assembly	44A2066-X
Lamp, 100 W/6.6 A, PK30d	48A0380
Lamp, 119-120 W/6.6 A	48A0069
Lamp, 150 W/6.6 A (ETL Certified)	48A0044
Lamp, 200 W/6.6 A (ETL Certified)	48A0145
Lamp socket	49A0032
Lens, inner - 180° segment, white	63B0415-1
Lens, inner - 180° segment, yellow ³	63B0415-2
Lens, inner - 180° segment, red ³	63B0415-3
Lens, inner - 180° segment, green ³	63B0415-4
Lens, inner - 180° segment, obscured	63B0415-6
Lens, inner bracket	61A0146
Lens, inner spring clip	65A0163
Outer lens, clear bidirectional (L-862) ³	63B0416
Outer lens, red-green, left hand (L-862E) ³	63A0602
Outer lens, red-green, right hand (L-862E) ³	63A0601
Socket mounting plate assembly	44A2089
Wire grommet	63A0042-4

Table 12: Possible Spare Parts (continued)

Description	Part No.
-------------	----------

Notes

- ¹ Contact the ADB SAFEGATE Sales Department for additional details on this application
- ² Slot across threaded end allows easy replacement of broken frangible coupling
- ³ See Ordering Code for ETL Certification
- ⁴ Color and/or color configuration not recognized by the FAA

Appendix A: SUPPORT

Our experienced engineers are available for support and service at all times, 24 hour/7 days a week. They are part of a dynamic organization making sure the entire ADB SAFEGATE is committed to minimal disturbance for airport operations.

ADB SAFEGATE Support

Live Technical Support - Americas

If at any time you have a question or concern about your product, just contact ADB SAFEGATE's technical service department. Trained in all areas of system issues, troubleshooting, quality control and technical assistance, our highly experienced Technical support specialists are available 24 hours a day, seven days a week to provide assistance over the phone.

ADB SAFEGATE Americas Technical Service & Support (US & Canada): +1-800-545-4157

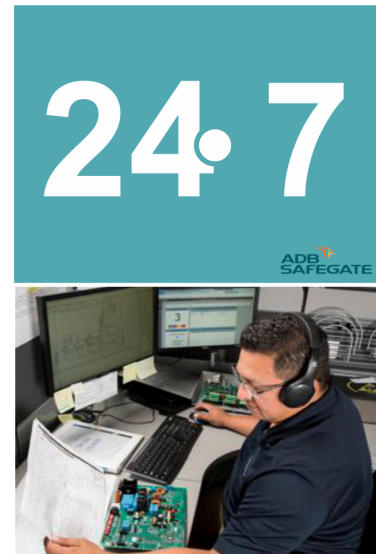
ADB SAFEGATE Americas Technical Service & Support (International): +1-614-861-1304

During regular business hours, you can also Chat with a Service Technician. We look forward to working with you!

Before You Call

When you have an airfield lighting or system control system problem it is our goal to support airfield maintenance staff as quickly as possible. To support this effort we ask that you have the following information ready before calling.

- The *airport code*
- If not with an airport, then company name (prefer customer id number)
- Contact phone number and email address
- Product with part number preferable or product number
- Have you reviewed the product's manual and troubleshooting guide
- Do you have a *True RMS* meter available (and any other necessary tools)
- Be located with the product ready to troubleshoot



For more information, see www.adbsafegate.com, or contact ADB SAFEGATE Support via email at support@adbsafegate.com or

Brussels: +32 2 722 17 11

Rest of Europe: +46 (0) 40 699 17 40

Americas: +1 614 861 1304. Press 3 for technical service or press 4 for sales support.

China: +86 (10) 8476 0106

A.1 ADB SAFEGATE Website

The ADB SAFEGATE website, www.adbsafegate.com, offers information regarding our airport solutions, products, company, news, links, downloads, references, contacts and more.

A.2 Recycling

A.2.1 Local Authority Recycling

The disposal of ADB SAFEGATE products is to be made at an applicable collection point for the recycling of electrical and electronic equipment. The correct disposal of equipment prevents any potential negative consequences for the environment and human health, which could otherwise be caused by inappropriate waste handling. The recycling of materials helps to conserve natural resources. For more detailed information about recycling of products, contact your local authority city office.

A.2.2 ADB SAFEGATE Recycling

ADB SAFEGATE is fully committed to environmentally-conscious manufacturing with strict monitoring of our own processes as well as supplier components and sub-contractor operations. ADB SAFEGATE offers a recycling program for our products to all customers worldwide, whether or not the products were sold within the EU.

ADB SAFEGATE products and/or specific electrical and electronic component parts which are fully removed/separated from any customer equipment and returned will be accepted for our recycling program.

All items returned must be clearly labeled as follows:

- For *ROHS/WEEE* Recycling
- Sender contact information (Name, Business Address, Phone number).
- Main Unit Serial Number.

ADB SAFEGATE will continue to monitor and update according for any future requirements for *EU directives* as and when *EU member states* implement new *regulations* and or *amendments*. It is our aim to maintain our *compliance plan* and assist our customers.

Company Addresses

ADB SAFEGATE	ADB SAFEGATE, Belgium: Leuvensesteenweg 585, B-1930 Zaventem Belgium
Contact: Tel.: +32 2 722 17 11, Fax: +32 2 722 17 64	Email: marketing@adbsafegate.com Internet: www.adbsafegate.com
Americas LLC	ADB SAFEGATE, Americas: 977 Gahanna Parkway, Columbus, OH 43230 USA
Contact: Tel.: +1 (614) 861 1304, Fax: +1 (614) 864 2069	Email: sales.us@adbsafegate.com Internet: www.adbsafegate.com
ADB SAFEGATE Sweden AB	ADB SAFEGATE, Sweden: Djurhagegatan 19 SE-213 76 Malmö Sweden
Contact: Tel.: +46 (0)40 699 17 00, Fax: +46 (0)40 699 17 30	Email: marketing@adbsafegate.com Internet: www.adbsafegate.com
ADB SAFEGATE Airfield Technologies Ltd. China	ADB SAFEGATE, China: Unit 603, D Block, CAMIC International Convention Center, No 3, Hua Jia Di East road, ChaoYang district, Beijing 100102 P.R. China
Contact: Tel.: +86 (10) 8476 0106, Fax: +86 (10) 8476 0090	Email: china@safegate.com Internet: www.adbsafegate.com
ADB SAFEGATE Germany GmbH	ADB SAFEGATE Germany GmbH, Mannheim: Konrad-Zuse-Ring 6, D-68163 Mannheim Germany
Contact: Tel.: +49 (621) 87 55 76-0, Fax: +49 (621) 87 55 76-55	Email: marketing@adbsafegate.com Internet: www.adbsafegate.com



**Powering Your Airport Performance
from Approach to Departure**

adbsafegate.com

Copyright © ADB SAFEGATE, all rights reserved

