

TAXIWAY LIGHTING

Edge Markers

Taxiway Edge Retro-reflective Markers 910823



The ADB SAFEGATE type 910823 Retro-reflective Taxiway Marker is approved to Transport Canada specification K343.

Application

The Retro-reflective Taxiway Marker is used to delineate taxiway and apron edges when no edge lighting is provided or when centerline taxiway inset lighting is used. The marker is available in different colours to suit standard or special applications.

When used with an ADB SAFEGATE temporary mounting baseplate, this unit makes an ideal temporary marker for construction areas on the airside.

Features

- The 910823 Retro-reflective Marker is constructed of impact resistant plastic and features a built-in frangible coupling that will allow the marker to come apart when impacted by an aircraft or vehicle but will withstand the effects of jet blast.
- The marker uses a very high grade retro-reflective material meeting or exceeding the requirements of ASTM D4956-95.
- The marker is available in three standard sizes or any custom size the customer specifies.
- Mounting can be accomplished by different methods:
 1. 2" Rigid Galv. Steel Conduit × 18" with coupling.
 2. 2" Rigid PVC Conduit × 18" with Female Adapter
 3. 2" × 2" (nom.) Wooden Stake
 4. 2" ADB SAFEGATE Angle Mounting Stake
 5. 2" Aluminum Mounting Flange

Ordering Code

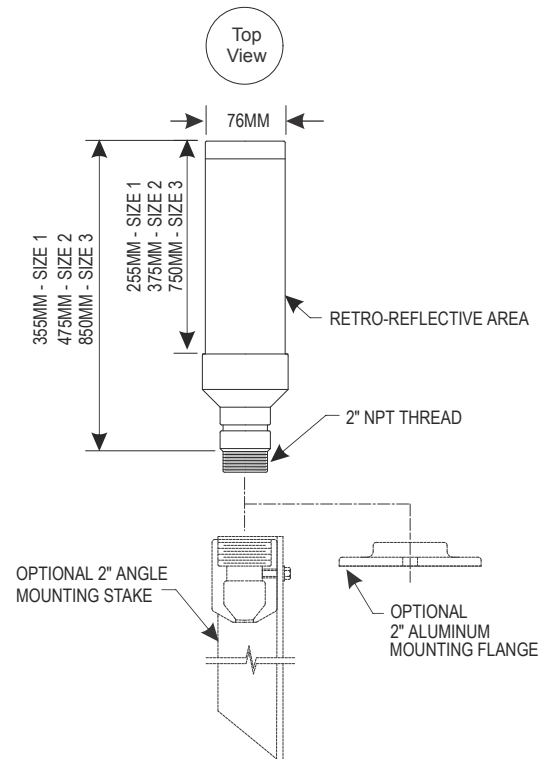
Reflective Color

- B = Blue
- Y = Yellow
- C = White
- R = Red
- G = Green

Length of Reflective Area

- 1 = 355 mm (Standard)
- 2 = 475 mm
- 3 = 850 mm
- S = Special (Please specify)

910823 X - X



www.adbsafegate.com

Product specifications may be subject to change, and specifications listed here are not binding. Confirm current specifications at time of order.