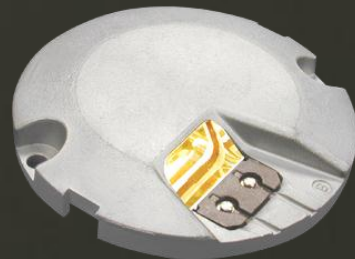


# Airfield Lighting

Product Description

8" Unidirectional High-Intensity Inset Light  
(INL-RTI)

- Rapid Exit Taxiway Indicator



**Note:** *This page is blank for convenient double-sided printing.*

## 1. INTRODUCTION

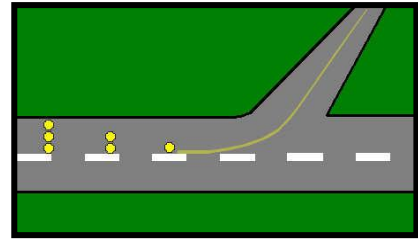
INL-RTI is a 8" unidirectional high intensity inset light.

### **Utilisation**

- Rapid exit taxiway indicator

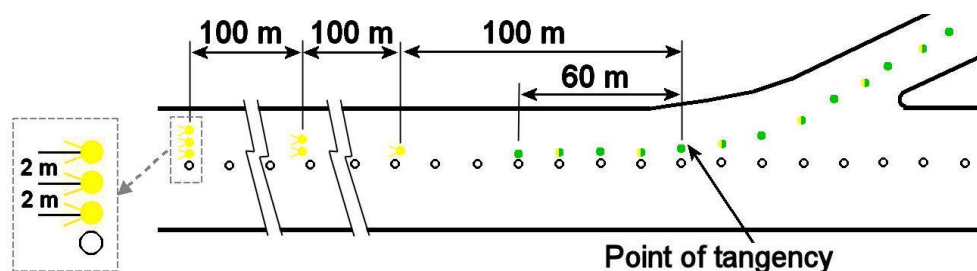
### **Compliance**

- ICAO: Annex 14 Volume 1, 2009 Paragraph 5.3.14
- FAA: 150/5345-46C
- French STNA
- CAP 168
- BS 3224



## 2. MAIN ADVANTAGES

- Low power consumption: only 45 Watts.
- Lamp life greater than 1,500 hours at 6.6 Amps.
- Very low projection: 12.7 mm (1/2")
- Small diameter: 203 mm (8")
- Installation in 100 mm shallow base (shallow cover version).
- Excellent photometric performances due to reflector lamp:
  - Improved luminous efficiency.
  - Identical lamp performance over time.
  - High optical stability: no internal adjustment needed.
- Very easy fast maintenance: small quantity of components.
- Non-sealed prism easy to replace.
- Valve for water-tightness test.
- Many parts common with other lights in the same range.
- Easy handling and transport due to small size and low weight.



### 3. TECHNICAL CHARACTERISTICS

Component	Description
<b>Lamp:</b>	45 Watts 6.6 Amps pre-focused halogen lamp with an integral dichroic-coated reflector. Lamp life at 6.6 Amps greater than 1,500 hours.
<b>Electrical Power Supply:</b>	The fitting is delivered equipped of one two-pole secondary FAA plug to connect it to an isolating transformer.
<b>Photometry:</b>	Distribution and homogeneity comply with Appendix 2 of ICAO Annex 14 Volume I and with FAA.
<b>Colour:</b>	Yellow dichroic filter. Chromaticity complies with Appendix 1 of ICAO Annex 14. Volume I.
<b>Finish:</b>	All external parts are made of anodised tempered aluminium alloy casting. All fixings and fastenings are stainless steel.
<b>Fixing on support:</b>	By two M10 studs and nuts.
<b>Projection:</b>	12.7 mm (1/2")
<b>External diameter:</b>	203 mm (8").
<b>Net Weight:</b>	2.8 kg.

Packing Data			
Designation	Volume in m <sup>3</sup>	Dimensions in mm	Weight in kg
INL-RTI with short cover	0.007	220 x 220 x 145	2.9
INL-RTI with long cover	0.007	220 x 220 x 145	3.0

### 4. INSTALLATION OPTIONS

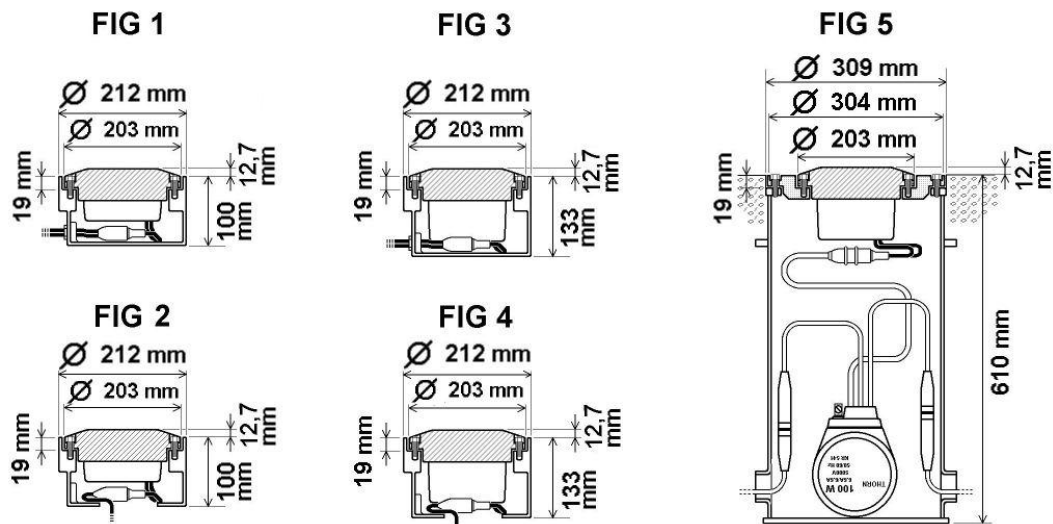
#### Electrical:

- RETIL shall not be displayed in the event of any lamp failure that affects the light pattern (ICAO 5.3.14.2).
- RETIL should be power supplied on a separate circuit to other runway lighting so that they may be used when other lighting is switched off (ICAO 5.3.14.7).

#### Mechanical:

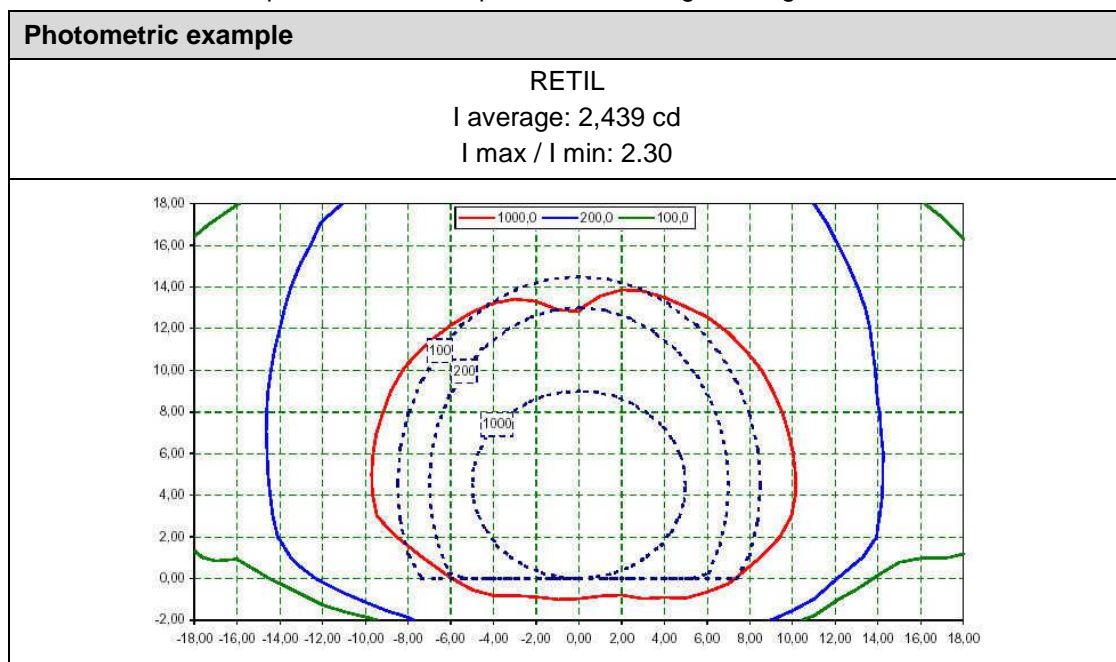
- On 8" shallow base 100 mm deep with side access (Fig 1) or with bottom access (Fig 2). Shallow Cover.
- On 8" shallow base 133 mm deep with side access (Fig 3) or with bottom access (Fig 4). Long Cover.
- On FAA L-868B deep base by means of 12"/ 8" adapter ring (Fig 5).
- On SR8 seating ring by means of SR8/8"adapter ring.

(\*) When the fitting is equipped with a cut-out device (relay or film disk), a long cover must be used and the minimum depth of the base must be 133 mm.



## 5. PHOTOMETRICS

This section includes photometric examples of different light configurations.



## 6. DESIGN

Components	INL-RTI
<ol style="list-style-type: none"> <li>1. Body</li> <li>2. Silicone prism gasket</li> <li>3. Non-sealed prism</li> <li>4. Prism clamp with accessories</li> <li>5. Lamp support</li> <li>6. Lamp fixing spring and screw</li> <li>7. Pre-focused halogen dichroic reflector lamp 45 Watts (*) at 6.6 Amps Diameter 50 mm</li> <li>8. Filter protection gasket</li> <li>9. Yellow filter</li> <li>10. Filter fixing spring and screw</li> <li>11. Cable terminal</li> <li>12. Cut out relay (*)</li> <li>13. Film disk cut out (*)</li> <li>14. Film disk cut out holder (*)</li> <li>15. Cable subassembly for short cover</li> <li>16. Cable subassembly for long cover</li> <li>17. Cover gasket</li> <li>18. Cover screw</li> <li>19. Equipped short cover</li> <li>20. Equipped long cover (*)</li> <li>21. Valve for water-tightness tests</li> <li>22. O ring gasket for THORN 8" shallow base</li> </ol>	

**Note:** the complete fitting is supplied with water-tightness O ring gasket for THORN 8" shallow base.

7. ORDER CODES

Component	Order code
<b>FITTING INL-RTI</b>	
Lamp:	45W
Colour:	Y
Cover:	
• Long cover	LC
• Short cover	SC
Cut out device (Option):	
• One cut out relay	RL
• One film disk cut out	FD
<b>FITTING SUPPORTS</b>	
8" shallow base	See DOC 1402.E
Adapter ring	See DOC 1402.E



## 8. SPECIFICATION

- The Rapid Exit Taxiway Indicator lights shall be unidirectional high intensity complying with ICAO recommendations in Annex 14, Volume I, paragraphs 5.3.14 and with FAA standards.
- It shall be fitted with one 6.6 Amps halogen pre-focused dichroic reflector lamp not exceeding 45 Watts. Lamp life shall be at full intensity greater than 1,500 hours.
- All external parts shall be made of anodised tempered aluminium alloy casting. All fixings and fastenings shall be stainless steel.
- It shall have a maximum outer diameter of 203 mm (8") and its projection shall not exceed 12.7 mm (1/2").
- It must be able to be installed directly on an 8" shallow base, or by means of adapter on a FAA L-868B deep base or a seating ring.
- It will be design to allow easy maintenance.
- The prism shall not be sealed.
- The filter shall be dichroic.
- The fittings in this model range share many of the same components.
- No internal adjustment shall be needed.
- The weight of the fitting shall not exceed 3 kg.

**Note:** All descriptions and photometric characteristics in this publication present only general particulars and shall not form part of any contract. The right is reserved to change them without prior notification.



**Note:** *This page is blank for convenient double-sided printing.*

# Check in to the future

How many aircraft can your airport handle today?

Can this number be increased without adverse effects on the airport's safety level?

It is a known fact that traffic volume will rise in the foreseeable future. More movements will demand monitoring of the entire airport. Requirements will be sharpened and the development of an integrated system

controlling not only ground movements but also air traffic close to the airport is of the highest interest.

The International Civil Aviation Organization (ICAO) already describes A-SMGCS, Advanced Surface Movement Guidance and Control System, as the answer to the future modern airport need to control the entire airport space in one superior system.

To a larger extent than today's systems, A-SMGCS will rely on automated processes to give both pilots and traffic controllers exact information about positions and directions. Safegate Group delivers complete A-SMGCS solutions already, as well as all vital parts relating to it. Safegate Group can check your airport into the future – today!



## Safegate Group HQ

Djurhagegatan 19  
SE-213 76 Malmö, Sweden  
Phone: +46 (0)40 699 17 00  
Fax: +46 (0)40 699 17 30  
E-mail: [market@safegate.com](mailto:market@safegate.com)

## Australia

[australia@safegate.com](mailto:australia@safegate.com)  
+61 (0)3 9720-3233

## Austria

[office@avibit.com](mailto:office@avibit.com)  
+43 316 429961

## Brazil

[brazil@safegate.com](mailto:brazil@safegate.com)  
+55 11 2137 4405

## China

[china@safegate.com](mailto:china@safegate.com)  
+8610-85275297

## Dubai

[dubai@safegate.com](mailto:dubai@safegate.com)  
+971 4 452 75 75

## Finland

[finland@safegate.com](mailto:finland@safegate.com)  
+358 (0)20754 7700

## France

[france@safegate.com](mailto:france@safegate.com)  
+33 (0)1 42 99 60 40

## Germany

[germany@safegate.com](mailto:germany@safegate.com)  
+49 (0)4121 464 303

## India

[india@safegate.com](mailto:india@safegate.com)  
+91 11 4106 1545

## Malaysia

[malaysia@safegate.com](mailto:malaysia@safegate.com)  
+60 32 011 3522

## Qatar

[qatar@safegate.com](mailto:qatar@safegate.com)  
+974 436 9628

## Russia

[russia@safegate.com](mailto:russia@safegate.com)  
+7 495 917 4614

## Singapore

[singapore@safegate.com](mailto:singapore@safegate.com)  
+65 6289 6893

## Spain

[spain@safegate.com](mailto:spain@safegate.com)  
+34 917 157 598

## UK

[uk@safegate.com](mailto:uk@safegate.com)  
+44 (0)208 573 0384

## USA

[usa@safegate.com](mailto:usa@safegate.com)  
+1 763 535 92 99

**THORN**  
Airfield Lighting

**IDMAN**

**avibit**  
AIR TRAFFIC SOLUTIONS

**SAFEGATE**  
GROUP

*Safegate Group offers solutions for increased safety, efficiency and environmental benefits to airports worldwide. The company was founded in 1973 and has its headquarters in Malmö, Sweden. Safegate Group has more than 70 partners around the globe in order to be close to its customers. Earlier members of Safegate Group include Thorn AFL and Idman, who both have over 40 years of experience in airfield lighting solutions for airports and heliports. The latest member of Safegate Group is Avibit, a leading provider of next generation software applications and integration of efficient air traffic control systems. Safegate Group's complete range of products and services, a "one-stop shop", provides solutions to customers and airborne travellers around the globe.*

[www.safegate.com](http://www.safegate.com)