

# APPROACH LIGHTING

## RAILS

### Runway Alignment Indicator Light System

VOLTAGE/CURRENT-POWERED FTS-815/835



#### Compliance with Standards

- FAA:** L-849A/E AC 150/5345-51 (Current Edition)
- T/C:** Transport Canada K312
- ICAO:** ICAO Annex 14
- CSA:** CSA Approved

#### Application

The FTS-815/835 Runway Alignment Indicator Light System (RAILS) is used as part of a MALSR or SSALR CAT I approach lighting system for precision approach runways. The system consists of five units, normally installed starting at 720 m from the runway threshold and spaced at 60 m intervals inline with the runway centerline, prior to the beginning of the steady burning light barrettes. The system can also be expanded up to 21 units for use with an ALSF-1 or -2 CAT II or III approach lighting system.

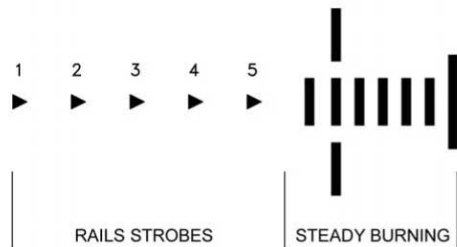
The FTS-815 is a voltage-powered system obtaining power from a 120 VAC or 240 VAC source. Brightness control is accomplished through use of the FTC-435 series controller or individual control wires.

The FTS-835 is a current-powered system obtaining power and brightness control direct from an airfield series circuit through a 300 W 6.6 A isolating transformer (7.5 kW CCR recommended per system).

The flash head and power converter can be co-mounted to form a single unit or separate mounted for use on approach lighting towers. Special engineering and design of the unit allows for ease of installation, operation and maintenance.

The FTS-815/835 is made in the USA and ETL certified by Flash Technology in Franklin, TN.

#### System Layout



#### Ordering Code

##### RAILS Voltage-Powered FTS-815

RAILS comes with 5 flash heads and 5 power converters, 10 breakable couplings

Specify which units are to be separate mounted  
 \_ 1 \_ 2 \_ 3 \_ 4 \_ 5 (closest to threshold)

Specify operating voltage  
 \_ 120 VAC, 60 Hz \_ 240 VAC, 60 Hz \_ 230 VAC, 50 Hz

Specify total length of flash head cable  
 (separate mount units) (P/N 6340)  
 \_\_\_\_\_ feet (or) \_\_\_\_\_ meters

Specify site location:  
 \_\_\_\_\_  
 \_\_\_\_\_

##### Notes:

Consult ADB Safegate for recommended spare parts, controls and power supplies or special applications.

##### RAILS Current-Powered FTS-835

RAILS comes with 5 flash heads and 5 power converters, 10 breakable couplings

Specify which units are to be separate mounted  
 \_ 1 \_ 2 \_ 3 \_ 4 \_ 5 (closest to threshold)

Specify total length of flash head cable  
 (separate mount units) (P/N 6340)  
 \_\_\_\_\_ feet (or) \_\_\_\_\_ meters

Specify site location:  
 \_\_\_\_\_  
 \_\_\_\_\_

##### Notes:

- Order isolating transformers, connectors and accessories separately.
- Consult ADB Safegate for recommended spare parts, controls and power supplies or special applications.

#### Features

- Single long-life flashtube
- Built-in flash head leveling and aiming system
- 0 to 250 elevation setting
- Solid-state circuitry
- Lightning surge resistant
- Safety interlocks
- Two year warranty including flashtube

# APPROACH LIGHTING

## RAILS

### Electrical (Voltage Powered)

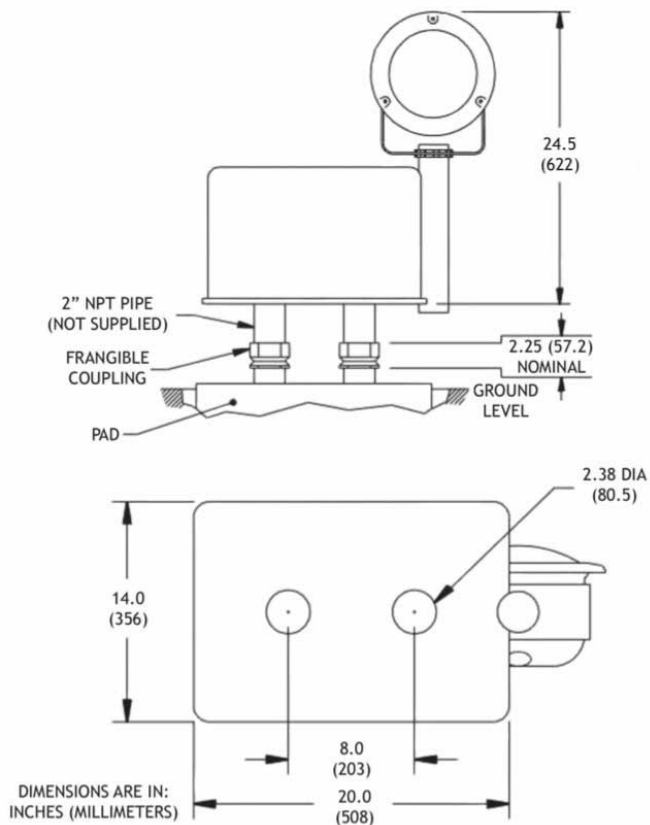
- Powered from 120 VAC or 240 VAC, 60 Hz (230 VAC, 50 Hz available).
- Brightness control via series circuit controller or control wiring.
- Internal surge protection

### Electrical (Current Powered)

- Powered from airfield lighting series circuit through (one) 300 W, 6.6 A isolating transformer (per unit)
- Recommended to use one 7.5 kW CCR per system
- Internal surge protection

### Photometric Performance

- 20,000 effective candelas – high
- 2,000 effective candelas – medium
- 450 effective candelas - low
- 120 flashes per minute
- 300 horizontal coverage
- 100 vertical beam width



[www.adbsafegate.com](http://www.adbsafegate.com)

Product specifications may be subject to change, and specifications listed here are not binding. Confirm current specifications at time of order.