



**ALSF/MALSR 2000 V System
Medium Intensity Approach Lighting System (MALSR) and
Approach Lighting System with Sequenced Flashers (ALSF)**

Spare Parts

SP_1037, Rev. B, 2022/08/03



A.0 Disclaimer / Standard Warranty

CE certification

The equipment listed as CE certified means that the product complies with the essential requirements concerning safety and hygiene. The European directives that have been taken into consideration in the design are available on written request to ADB SAFEGATE.

ETL certification

The equipment listed as ETL certified means that the product complies with the essential requirements concerning safety and FAA Airfield regulations. The FAA directives that have been taken into consideration in the design are available on written request to ADB SAFEGATE.

All Products Guarantee

ADB SAFEGATE will correct by repair or replacement per the applicable guarantee above, at its option, equipment or parts which fail because of mechanical, electrical or physical defects, provided that the goods have been properly handled and stored prior to installation, properly installed and properly operated after installation, and provided further that Buyer gives ADB SAFEGATE written notice of such defects after delivery of the goods to Buyer. Refer to the Safety section for more information on Material Handling Precautions and Storage precautions that must be followed.

ADB SAFEGATE reserves the right to examine goods upon which a claim is made. Said goods must be presented in the same condition as when the defect therein was discovered. ADB SAFEGATE further reserves the right to require the return of such goods to establish any claim.

ADB SAFEGATE's obligation under this guarantee is limited to making repair or replacement within a reasonable time after receipt of such written notice and does not include any other costs such as the cost of removal of defective part, installation of repaired product, labor or consequential damages of any kind, the exclusive remedy being to require such new parts to be furnished.

ADB SAFEGATE's liability under no circumstances will exceed the contract price of goods claimed to be defective. Any returns under this guarantee are to be on a transportation charges prepaid basis. For products not manufactured by, but sold by ADB SAFEGATE, warranty is limited to that extended by the original manufacturer. This is ADB SAFEGATE's sole guarantee and warranty with respect to the goods; there are no express warranties or warranties of fitness for any particular purpose or any implied warranties of fitness for any particular purpose or any implied warranties other than those made expressly herein. All such warranties being expressly disclaimed.

Standard Products Guarantee

Products manufactured by ADB SAFEGATE are guaranteed against mechanical, electrical, and physical defects (excluding lamps) which may occur during proper and normal use for a period of two years from the date of ex-works delivery, and are guaranteed to be merchantable and fit for the ordinary purposes for which such products are made.



Note

See your sales order contract for a complete warranty description.

Replaced or repaired equipment under warranty falls into the warranty of the original delivery. No new warranty period is started for these replaced or repaired products.

FAA Certified products manufactured by ADB SAFEGATE

ADB SAFEGATE L858 Airfield Guidance Signs are warranted against mechanical and physical defects in design or manufacture for a period of 2 years from date of installation, per FAA AC 150/5345-44 (applicable edition).

ADB SAFEGATE LED products (with the exception of obstruction lighting) are warranted against electrical defects in design or manufacture of the LED or LED specific circuitry for a period of 4 years from date of installation, per FAA EB67 (applicable edition). These FAA certified constant current (series) powered LED products must be installed, interfaced and powered with and through products certified under the FAA Airfield Lighting Equipment Program (ALECP) to be included in this 4 (four) year warranty. This includes, but is not limited to, interface with products such as Base Cans, Isolation Transformers, Connectors, Wiring, and Constant Current Regulators.



Note

See your sales order contract for a complete warranty description.

Replaced or repaired equipment under warranty falls into the warranty of the original delivery. No new warranty period is started for these replaced or repaired products.

Liability



WARNING

Use of the equipment in ways other than described in the catalog leaflet and the manual may result in personal injury, death, or property and equipment damage. Use this equipment only as described in the manual.

ADB SAFEGATE cannot be held responsible for injuries or damages resulting from non-standard, unintended uses of its equipment. The equipment is designed and intended only for the purpose described in the manual. Uses not described in the manual are considered unintended uses and may result in serious personal injury, death or property damage.

Unintended uses, includes the following actions:

- Making changes to equipment that have not been recommended or described in this manual or using parts that are not genuine ADB SAFEGATE replacement parts or accessories.
- Failing to make sure that auxiliary equipment complies with approval agency requirements, local codes, and all applicable safety standards if not in contradiction with the general rules.
- Using materials or auxiliary equipment that are inappropriate or incompatible with your ADB SAFEGATE equipment.
- Allowing unskilled personnel to perform any task on or with the equipment.

© ADB SAFEGATE BV

This manual or parts thereof may not be reproduced, stored in a retrieval system, or transmitted, in any form or by any means, electronic, mechanical, photocopying, recording, nor otherwise, without ADB SAFEGATE BV's prior written consent.

This manual could contain technical inaccuracies or typographical errors. ADB SAFEGATE BV reserves the right to revise this manual from time to time in the contents thereof without obligation of ADB SAFEGATE BV to notify any person of such revision or change. Details and values given in this manual are average values and have been compiled with care. They are not binding, however, and ADB SAFEGATE BV disclaims any liability for damages or detriments suffered as a result of reliance on the information given herein or the use of products, processes or equipment to which this manual refers. No warranty is made that the use of the information or of the products, processes or equipment to which this manual refers will not infringe any third party's patents or rights. The information given does not release the buyer from making their own experiments and tests.

TABLE OF CONTENTS

1.0 Introduction	1
1.1 High-Intensity Approach Lighting System	1
2.0 Parts	3
2.1 MALSR/ALSF Ordering Code	3
2.2 MALSR/ALSF Parts List	4
2.2.1 MALSR/ALSF Primary Control Cabinet Common Parts List	4
2.2.2 MALSR Primary Control Cabinet Specific Parts List	7
2.2.3 Flashing Light Assembly Parts List	8
2.2.4 Individual Control Cabinet Parts List	9
2.2.5 Steady Burning Light Assembly Parts List	10
2.2.6 MALSR PAR-38 Lampholder Assembly Parts List	11
2.2.7 MALSR/ALSF In-pavement Flasher (without PCB) Parts List	11
2.2.8 MALSR/ALSF In-pavement Flasher (with PCB) Parts List	14
2.2.9 MALSR/ALSF In-pavement Optical Assembly Parts List	15
2.2.10 Optional Parts	19
2.2.11 Separate Line Item Optional Parts	19
2.2.12 Separate Line Items Required Parts List	20
2.2.13 Recommended Spare Parts	20
A.0 SUPPORT	23
A.1 ADB SAFEGATE Website	23
A.2 Recycling	24
A.2.1 Local Authority Recycling	24
A.2.2 ADB SAFEGATE Recycling	24

1.0 Introduction

This section describes the ADB Safegate medium intensity approach lighting system with runway alignment indicator lights (MALSR) and approach lighting system with sequenced flashers (ALSF). The MALSR and ALSF are manufactured according to specification FAA-E-2325 and FAA-E-2628 respectively.

Refer to [Table 1](#) for the main differences between the MALSR and ALSF lighting systems. Refer to *MALSR/ALSF: Required Equipment* in this section for details concerning equipment differences.



Note

The MALSR includes both the electronics for the sequenced flasher and controls for the steady burning lights. The ALSF per FAA-E-2628 includes only the electronics for the sequenced flasher.

Table 1: Main Differences Between MALSR and ALSF

ALSF	MALSR
FAA-E- 2628 specification	FAA-E-2325 specification
Up to 21 flashers	3, 5, or 8 flashers (optionally to 21)
Flashers only	Flashers and steady burning lights
Misfire monitoring	Misfire monitoring optional
Steady burning lights powered from separate series circuit	Steady burning light powered from 15 kVA voltage driven transformer

1.1 High-Intensity Approach Lighting System

Compliance with Standards

FAA:	Designed according to ALSF-1, ALSF-2, ALSF-2/SSALR FAA-E-2628; FAA-E-2325 (Sequenced Flashing Components)
ICAO:	Annex 14 para. 5.3.4.7, 5.3.4.15, 5.3.4.16, 5.3.4.30, and 5.3.4.31
Military:	AFMAN(I) 32-1187/TM 811-5 (UFC 3-535-01) Approach Applications

Uses

ALSF-1, ALSF-2, and ALSF-2/SSALR approach lighting systems with elevated sequenced flashing lights are used at airports and military air bases to provide landing approach guidance, such as runway alignment, height perception, horizontal reference, and roll guidance extending from the landing threshold outward (2,400-3,000 feet) into the approach zone.

- ALSF-1**
 - The ALSF-1 approach lighting system is used on Category I Instrument Landing Systems (ILS) and includes up to 24 light stations (100-foot spacing) with up to 22 centerline bars of steady-burning lights (five lights to a bar) and up to 15 flashers.
- ALSF-2**
 - The ALSF-2 approach lighting system is used on Category II runways and includes up to 30 light stations (100-foot spacing) with 30 centerline bars of steady-burning lights (five lights to a bar) and up to 21 flashers.
- ALSF-2/SSALR**
 - The SSALR approach lighting system has up to eight sequenced flashing lights and is used as part of a dual-mode approach lighting system (ALSF-2/SSALR) when Category I conditions exist on Category II designated runways.

Operating Conditions

Temperature:	-67 °C to +137 °C (-55 °F to +55 °F)
Humidity:	0 to 100%
Altitude:	0 to 10,000 ft (3048 m) maximum

Master Control Cabinet Input Power Requirements

Voltage	Maximum Number of Flashers	Maximum Power Requirements
120/240 VAC	3	4 kVA
	6	5 kVA
	9	6 kVA
	12	7 kVA
	15	8 kVA
	18	9 kVA
	21	10 kVA
480 VAC	12	7.5 kVA
	21	11 kVA

Flasher Tester

The portable flasher tester is equipped with a test cable and plug, which connect to a socket in the ICC to monitor the operation of the flasher light unit. The flasher tester is capable of testing the power circuits and control signals from the primary control unit to the ICC, and from the ICC to the flash head.



High-Voltage Wire

Used to interconnect elevated flash head and individual control cabinet. Wire is supplied in 500-foot spools only. Please specify total length (in feet) of wire required when ordering.

High-Voltage Wire Ordering Code 12 AWG, 3 kV

89A0110-1

2.0 Parts

To order parts, call ADB Safegate Customer Service or your local representative. Use this five-column parts list, and the accompanying illustration, to describe and locate parts correctly.

2.1 MALSR/ALSF Ordering Code

This subsection describes the ordering code for the medium intensity approach lighting system with runway alignment indicator lights (MALSR) and the approach lighting system with sequenced flashers (ALSF).

Master Control Cabinet

44D1650 - X X X X

Flashers

- 1 - 8 flashers (maximum)
- 2 - 15 flashers (maximum)
- 3 - 21 flashers (maximum)

Monitoring

- 1 - Without monitoring
- 2 - With Monitoring (standard)

Voltage

- 1 - 120/240 VAC (standard)
- 2 - 480 VAC

Enclosure Type

- 1 - Standard
- 2 - Stainless steel

ICC Ordering Code

44D1651 - X

Flasher Type

- 1 = Elevated Flasher
- 3 = Elevated Flasher Panel Only
- 5 = Elevated Flasher (Stainless Steel)

Spare Parts Trunk

44D1652 - X 1 X 0

Monitoring

- 1 = Flasher With Monitoring (Standard)
- 2 = Flasher Without Monitoring

Frequency

- 1 = 60 Hz

Flashers

- 1 = 8 Flashers (Maximum) System
- 2 = 15 Flashers (Maximum) System
- 3 = 21 Flashers (Maximum) System

Notes

- The spare parts trunk must be ordered separately for FAA-E-2628 applications
- Sequenced flashing components (Part No. 44A1788) are ETL Certified according to FAA-E-2325

Aiming Device Ordering Code

44D1654 - X

Lamp Application

- 1 = For PAR -56 Lamp Only
- 2 = For PAR -56 and PAR -38 Lamps

Flash Head Ordering Code

44D1677 - X

Slip Fit

- 1 = Slip fitting for 2-inch EMT, 1.5-inch tube and tower
- 2 = Slip fitting for 1.5-inch Schedule 40 pipe and 62B0064 frangible coupling only

Note: Flash head includes lamp

2.2 MALSR/ALSF Parts List

This subsection provides the MALSR/ALSF parts list.

2.2.1 MALSR/ALSF Primary Control Cabinet Common Parts List

See [Figure 1](#) through [Figure 3](#) . This subsection provides a list of parts for the primary control cabinet that are common to both MALSR and ALSF. The MALSR primary control cabinet part number is 44D1655-X. The ALSF primary control cabinet part number is 44D1650-XXXX.

Item	Description	Part Number	Quantity	Note
1	Interlock switch	45A0303	1	
2	Fuse, 5 A (BUSS AGC-5)	47A0015	1	
3	Fuse, 15 A (BUSS AGC-15)	47A0016	1	
4	Ground fault outlet	47A0041	1	
5	Hour meter	52A0100	1	
6	Fuse, 1 A, S.B. A (BUSS MDL-5)	47A0017	1	
7	Fuse 10 A (BUSS MDL-1)	47A0018	2	
8	Circuit breaker, 15 A (AIRPAX #219-2-1-63F-3-15)	57A0047	1	
9	Circuit breaker, 30 A (AIRPAX #219-2-1-62-3-1-30)	57A0048	1	
10	Switch, Switch, MALSR, 120/240 Vac, 100A (AIRPAX #219-2-1-63F-3-1-100) Switch, ALSF, 120/240 Vac, 100A (AIRPAX #219-2-0-SW-3-1-100)	57A0057 57A0046	1	
11	Rotary switch PCB Rotary switch PCB, MALSR Rotary switch PCB, ALSF	44B1698-1 44B1698-2	1	
12	Contactor, 16 A, 120 Vac	53A0412-30	1	
13	Varistor	32A0011	4	
14	Control PCB Control PCB, 60 Hz with monitoring Control PCB, 60 Hz without monitoring	44D1696-11 44D1696-21	1	
15	I/O PCB I/O PCB, 5 flasher (maximum) system I/O PCB, 8 flasher (maximum) system I/O PCB, 11 flasher (maximum) system	44D1695-08 44D1695-15 44D1695-21	1	
16	Transformer (SIGNAL #DP-241-7-36)	35A0225	1	

Item	Description	Part Number	Quantity	Note
17	Monitor PCB	44D1697-08	1	
	Monitor PCB, 5 flasher (maximum) system, MALSR	44D1697-15		
	Monitor PCB, 8 flasher (maximum) system, MALSR	44D1697-21		
	Monitor PCB, 11 flasher (maximum) system, MALSR			
18	Lamp, 100 W (SYLVANIA #100A125)	48A0010	1	
19	Lamp socket, snap-in	49A0116	1	

Figure 1: MALSR Primary Control Cabinet

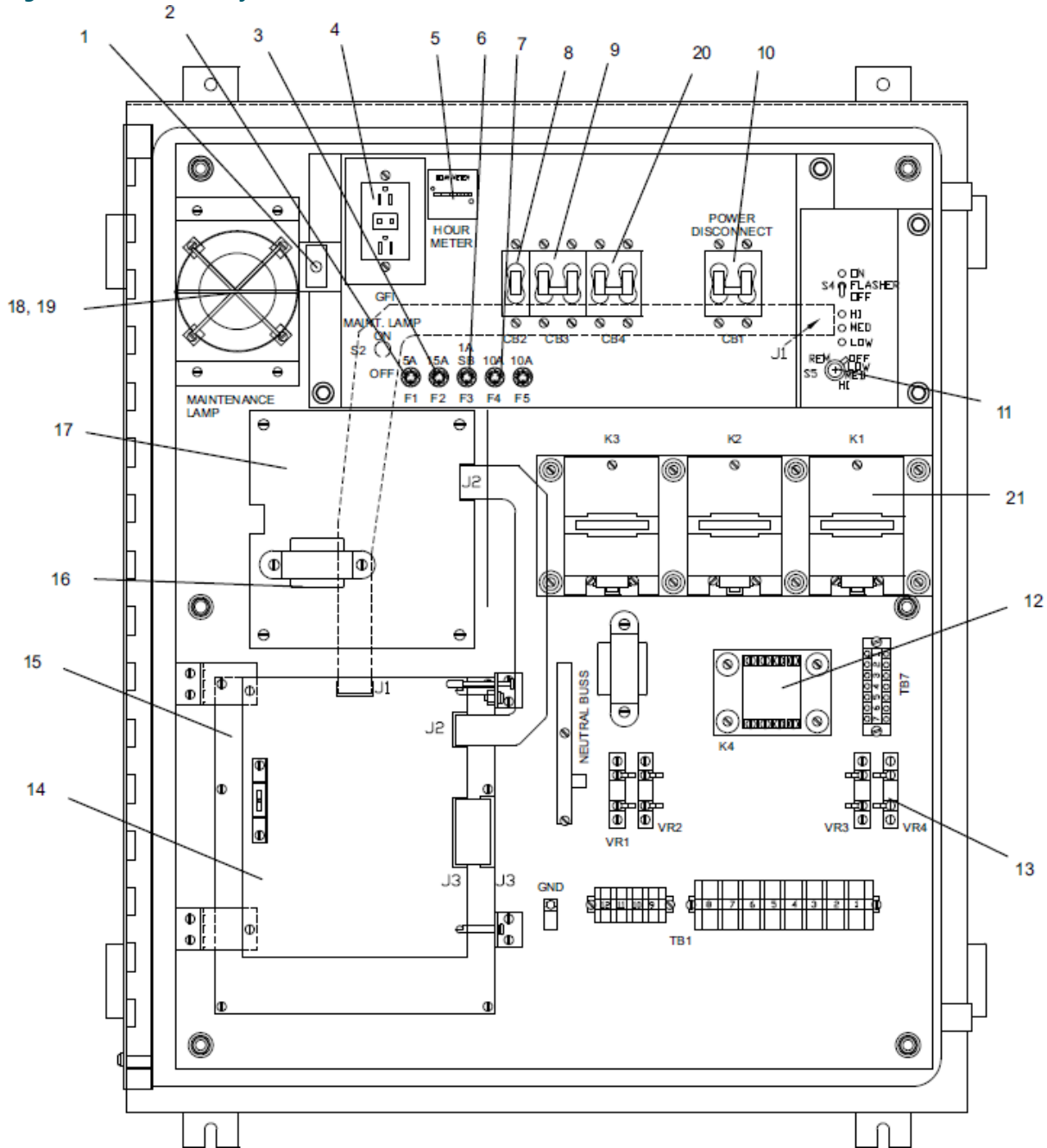


Figure 2: ALSF Primary Control Cabinet (Standard 120/240 Vac System)

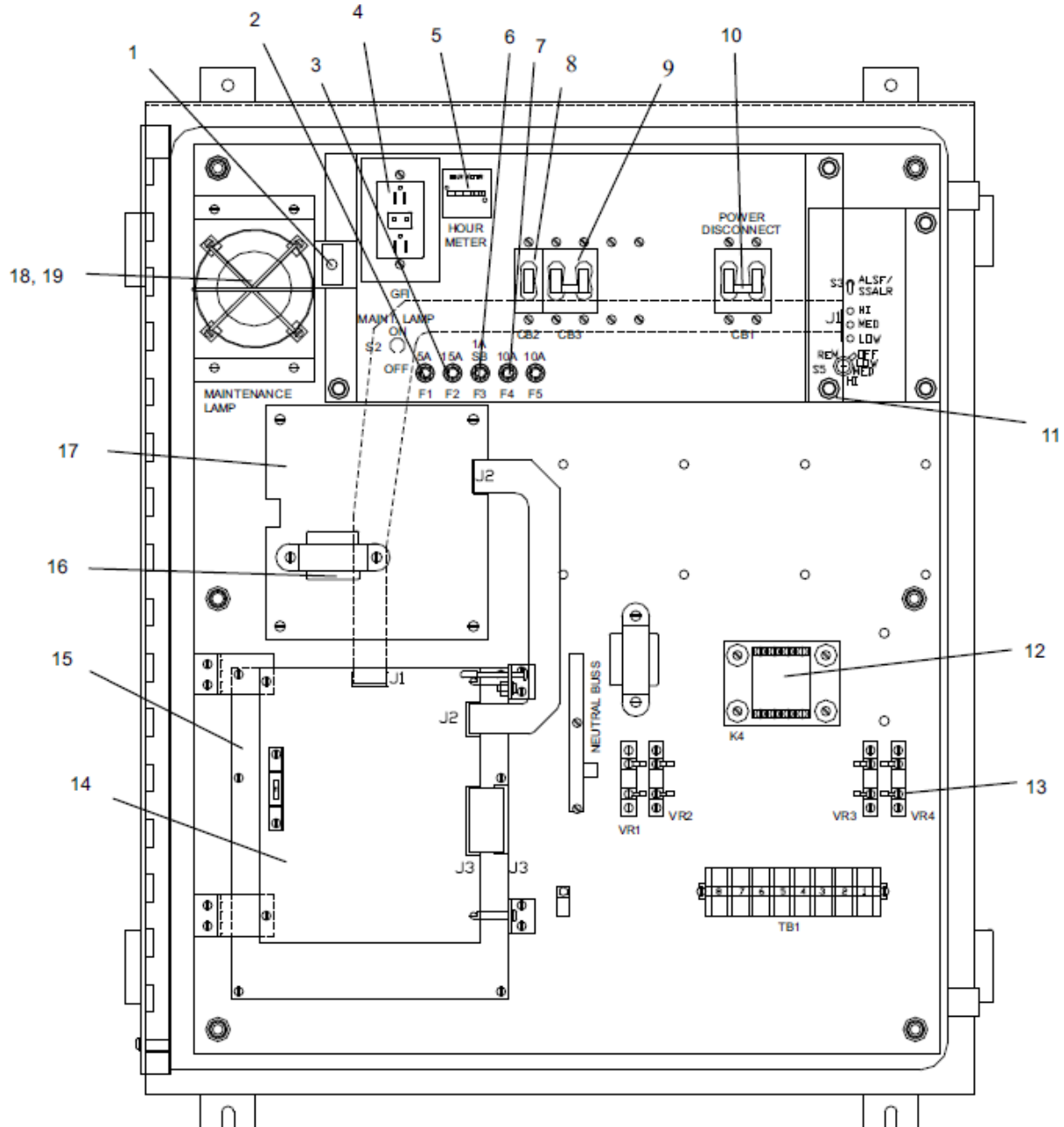
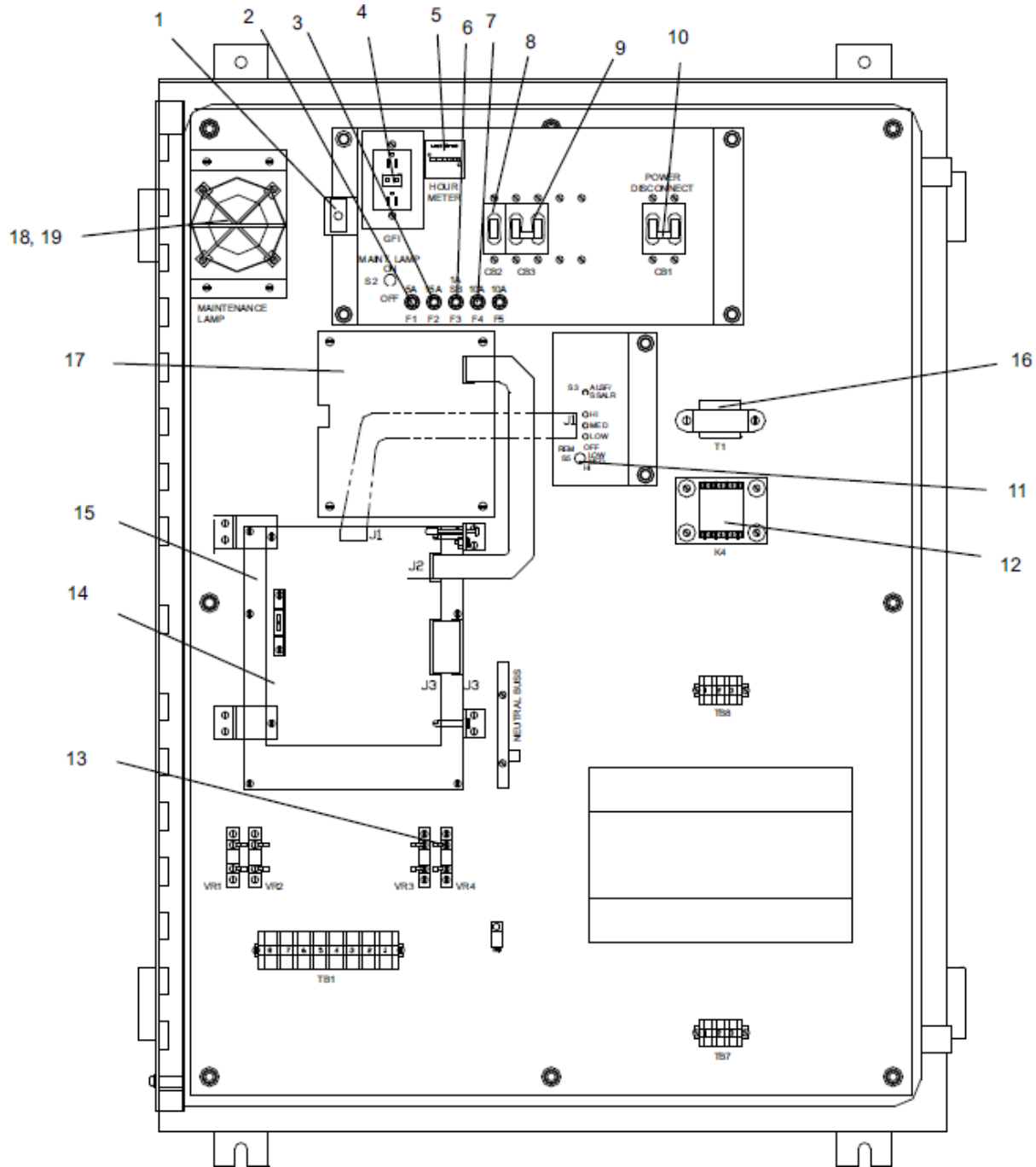


Figure 3: ALSF Primary Control Cabinet (Optional 240/480 Vac System)



2.2.2 MALSR Primary Control Cabinet Specific Parts List

See Figure 1 . This subsection provides primary control cabinet parts applicable only to the MALSR system.

The MALSR primary control cabinet part number is 44D1655-X.

Item	Description	Part Number	Quantity	Note
20	Circuit breaker, 70 A (AIRPAX #219-2-1-62F-3-1-70), MALSR	57A0049	1	
21	Contactor, 70 A, 120 Vac (TELEMECANIQUE #LC1- 050BK), MALSR	53A0252	3	

2.2.3 Flashing Light Assembly Parts List

See [Figure 4](#) . Refer to [Table 2](#) for flashing light assembly part numbers.

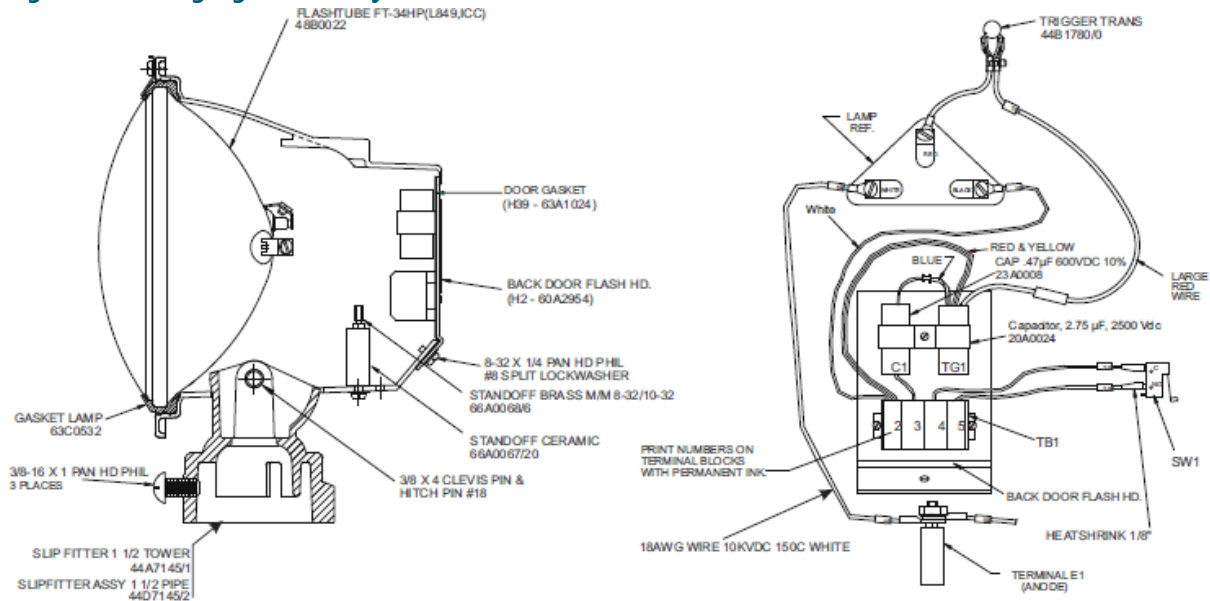
Table 2: Flashing Light Assembly Part Numbers

Flashing Light Assembly Type	Part Number
Uses slip fitter with 2-in. EMT, 1-1/2-in. (50.8 mm) tube and towers	44D1677-1
Uses slip fitter with 1-1/2-in. Schedule 40 pipe and 62B0064 frangible coupling	44D1677-2

Table 3: Flashing Light Assembly Part Numbers

Item	Description	Part Number	Quantity	Note
1	Lamp clip	60B0900	3	NS
10	Safety Interlock Switch	45A0297	1	NS
11	Safety Interlock Switch Insulator Plate	63B0534	1	NS

Figure 4: Flashing Light Assembly



2.2.4 Individual Control Cabinet Parts List

See Figure 5 for the individual control cabinet with elevated flasher. See Figure 6 for the individual control cabinet with in-pavement flasher. Individual control cabinet part number is 44D1651-1 for the ICC with elevated flasher and 44D1651-2 for the ICC with in-pavement flasher.

Item	Description	Part Number	Quantity	Note
	Transformer		1	
16	Transformer, (for elevated flasher unit)	35C0140		
	Transformer, (for in-pavement flasher unit)	35A0569		

Figure 5: Individual Control Cabinet (Elevated Flasher Only)

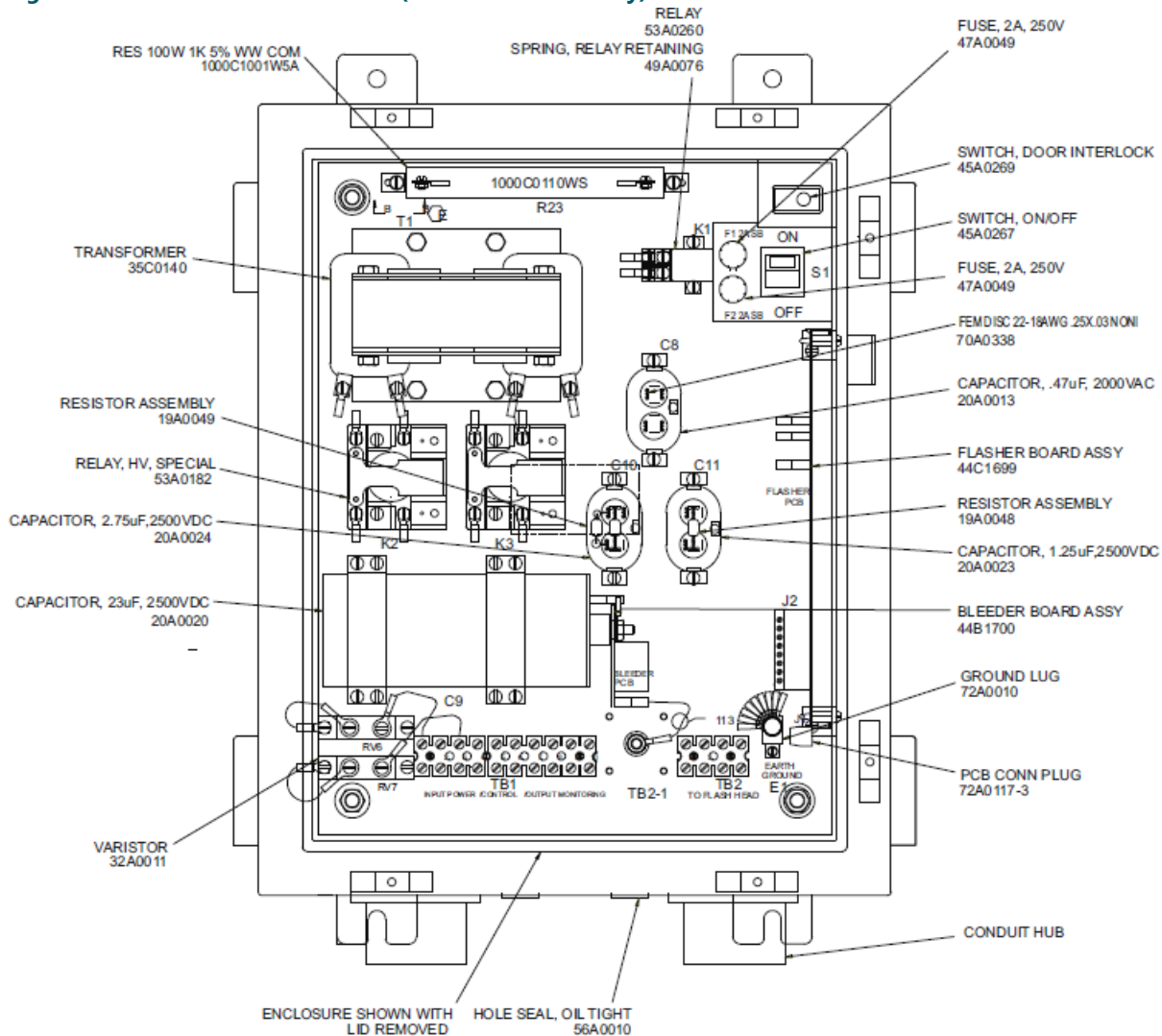
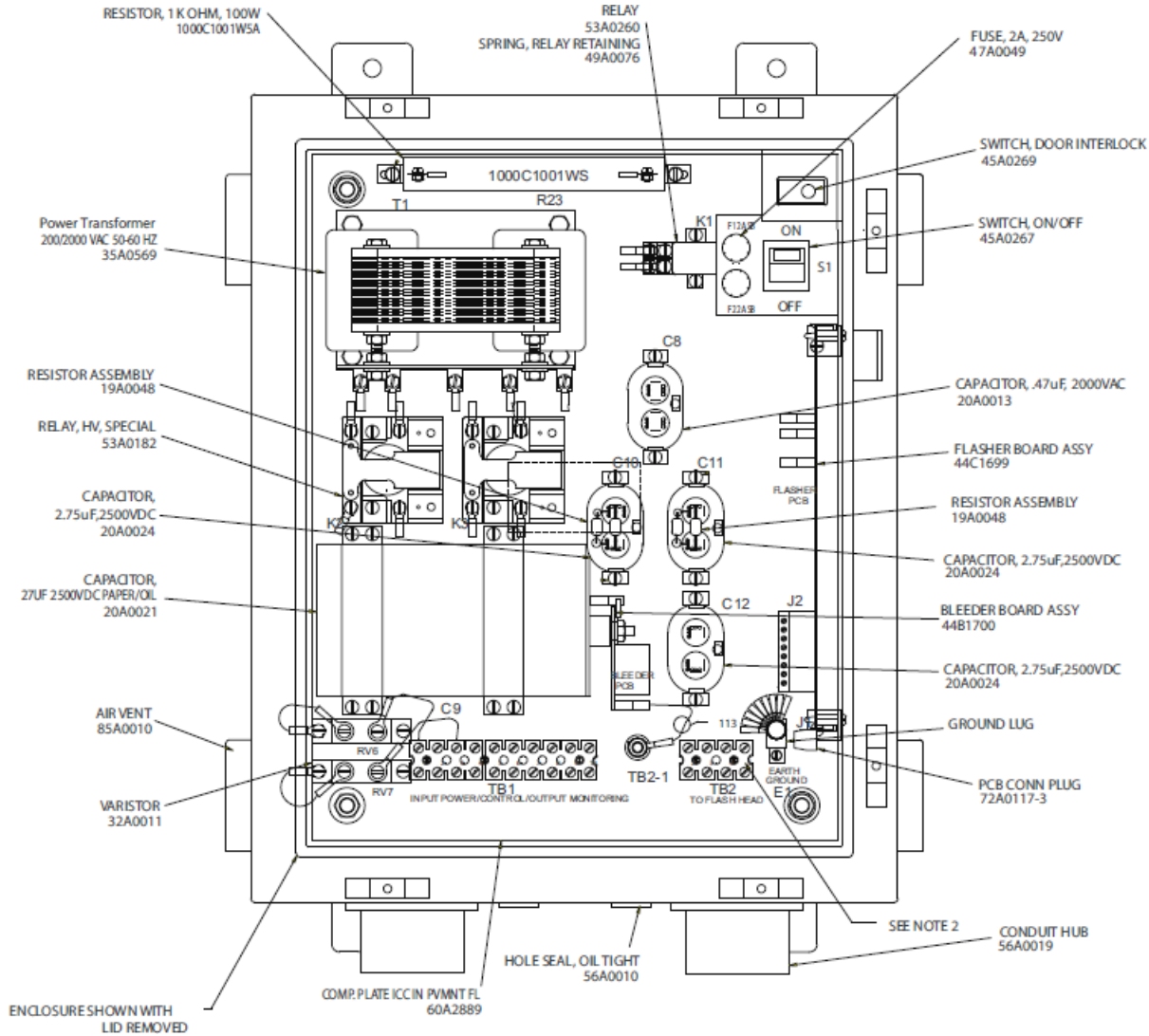


Figure 6: Individual Control Cabinet (In-Pavement Flasher Only)



2.2.5 Steady Burning Light Assembly Parts List

Refer to instruction manual 96A0119, PAR-56 Steady-Burning Approach Light for parts list and diagrams for the steady burning light assembly.

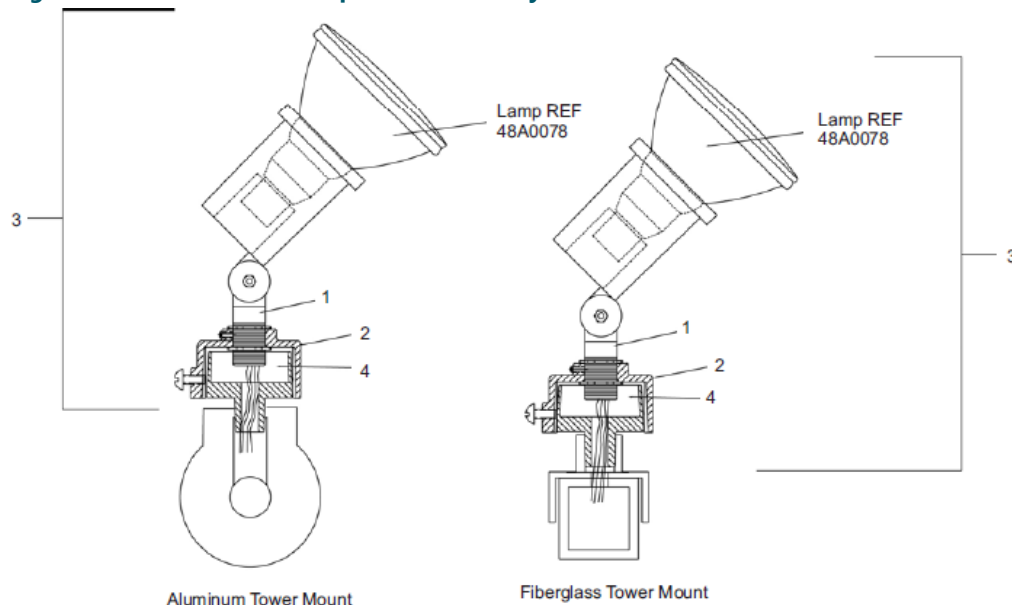
2.2.6 MALSR PAR-38 Lampholder Assembly Parts List

See Figure 7 . PAR-38 parts apply only to the MALSR system.

Item	Description	Part Number	Quantity	Note
1	PAR-38 lampholder, PAR/SP	44A0094	1	
2	Slip fitter	62B0528-2	1	
3	Lampholder assembly	44C1683	1	A

NOTE A: The lampholder assembly includes the PAR-38 lampholder (Item 1) and the slip fitter (Item 2). The lampholder assembly lamp is a separate line item and is not supplied with the lampholder assembly. Refer to Separate Line Item Optional Parts in this section for the lampholder assembly lamp.

Figure 7: MALSR PAR-38 Lampholder Assembly



2.2.7 MALSR/ALSF In-pavement Flasher (without PCB) Parts List

See Figure 8 . Refer below for the in-pavement flasher without PCB parts list. The part number for the in-pavement flasher is 44A6234-1.

Note
This fixture is no longer available.

Note
The previous part number for the in-pavement flashing light was 1440.02.050.

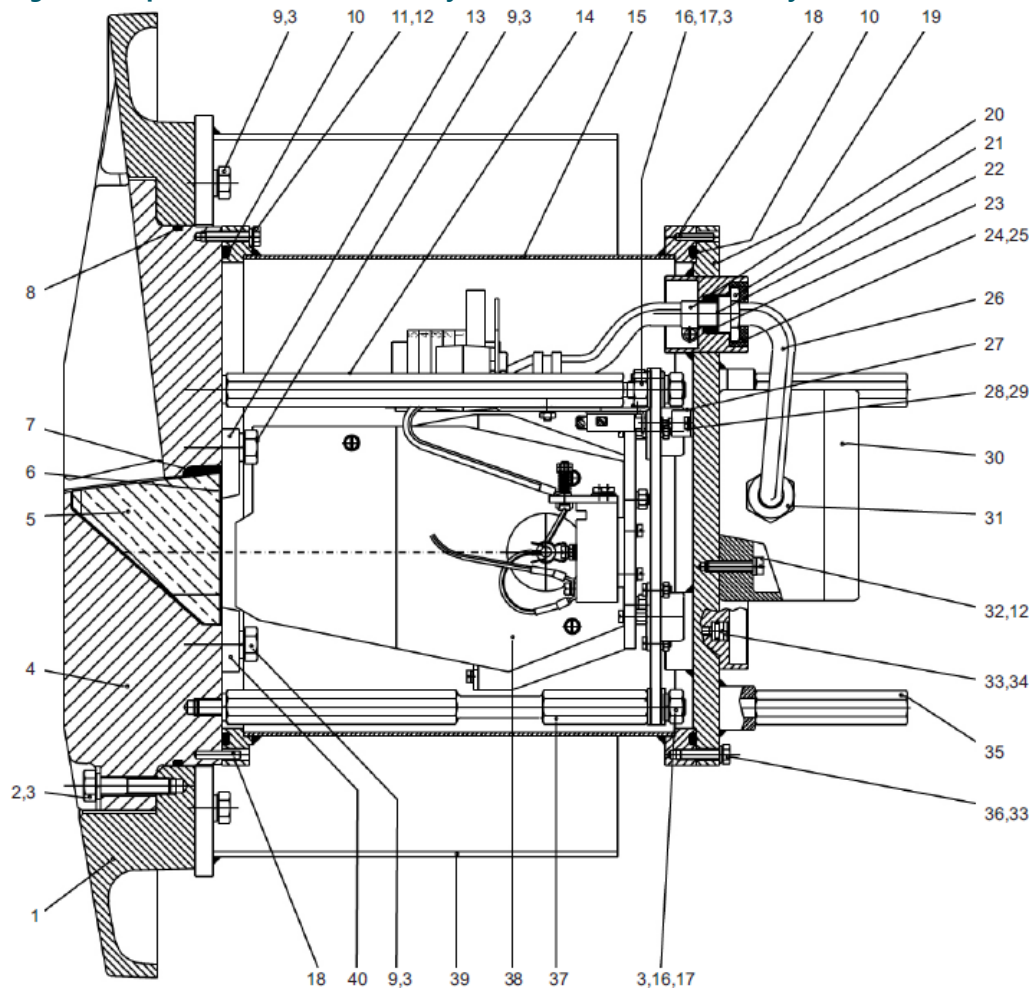
Item	Description	Part Number	Quantity	Note
1	Ring, cast iron	4070.93.970	1	
2	Screw, #3/8-16 UNC x 7/8, stainless steel	7200.13.813	6	
3	Spring, washer M10, stainless steel	7284.10.464	28	
4	Cover, cast iron	4070.93.960	1	
5	Lens, glass	5050.01.300	1	
6	Prism strip, silicone	4070.97.150	2	
7	Sealant, RTV	7835.55.150	AR	

Parts

Item	Description	Part Number	Quantity	Note
8	O-ring, 11.984 diameter, rubber	7080.90.390	1	
9	Screw, #3/8–16 UNC x 7/8, stainless steel	7200.23.806	14	
10	O-ring, 10.975 diameter, rubber	7080.90.380	2	
11	Screw, M6 x 25, stainless steel	7100.08.576	6	
12	Spring, washer, M6, stainless steel	7284.10.445	22	
13	Lens holder, left, steel plated	4070.95.390	1	
14	Stud, steel plated	4070.95.360	2	
15	Light base, steel plated	4070.95.140	1	
16	Hex nut, M10, stainless steel	7150.53.300	6	
17	Flat washer, M10, stainless steel	7283.04.710	8	
18	Alignment pin, stainless steel	7275.60.313	1	
19	Inner cover, steel plated	4071.59.120	1	
20	Cable clamp, nylon	6126.22.050	1	
21	Nut for PC, brass	4070.97.130	1	
22	Washer for PC, stainless steel	4070.97.130	1	
23	Packing ring, PG16, rubber	6126.01.301	1	
24	Sealant	7835.55.070	AR	
25	Sealant	7835.45.100	AR	
27	Interlock switch, stainless steel	4070.97.010	1	
28	Screw, M4 x 8, stainless steel	7110.08.358	2	
29	Spring washer, M4, stainless steel	7284.10.416	2	
30	Box for connection, aluminum	4071.57.660	1	
31	Compression gland, brass	6126.01.330	1	
32	Screw, M6 x 16, stainless steel	7110.08.561	4	
33	Pressure release screw, stainless steel	4070.97.040	1	
34	O-ring, silicone	7080.90.016	1	
35	Stud, steel plated	4070.96.531	3	
36	Screw, M6 x 20, stainless steel	7100.08.569	6	
37	Stud, steel plated	4070.95.351	1	
38	Optical system	4070.95.351	1	
40	Lens holder, right, steel plated	4070.95.390	1	

AR: As required

Figure 8: In-pavement Flasher Assembly (without PCB) Reference Only

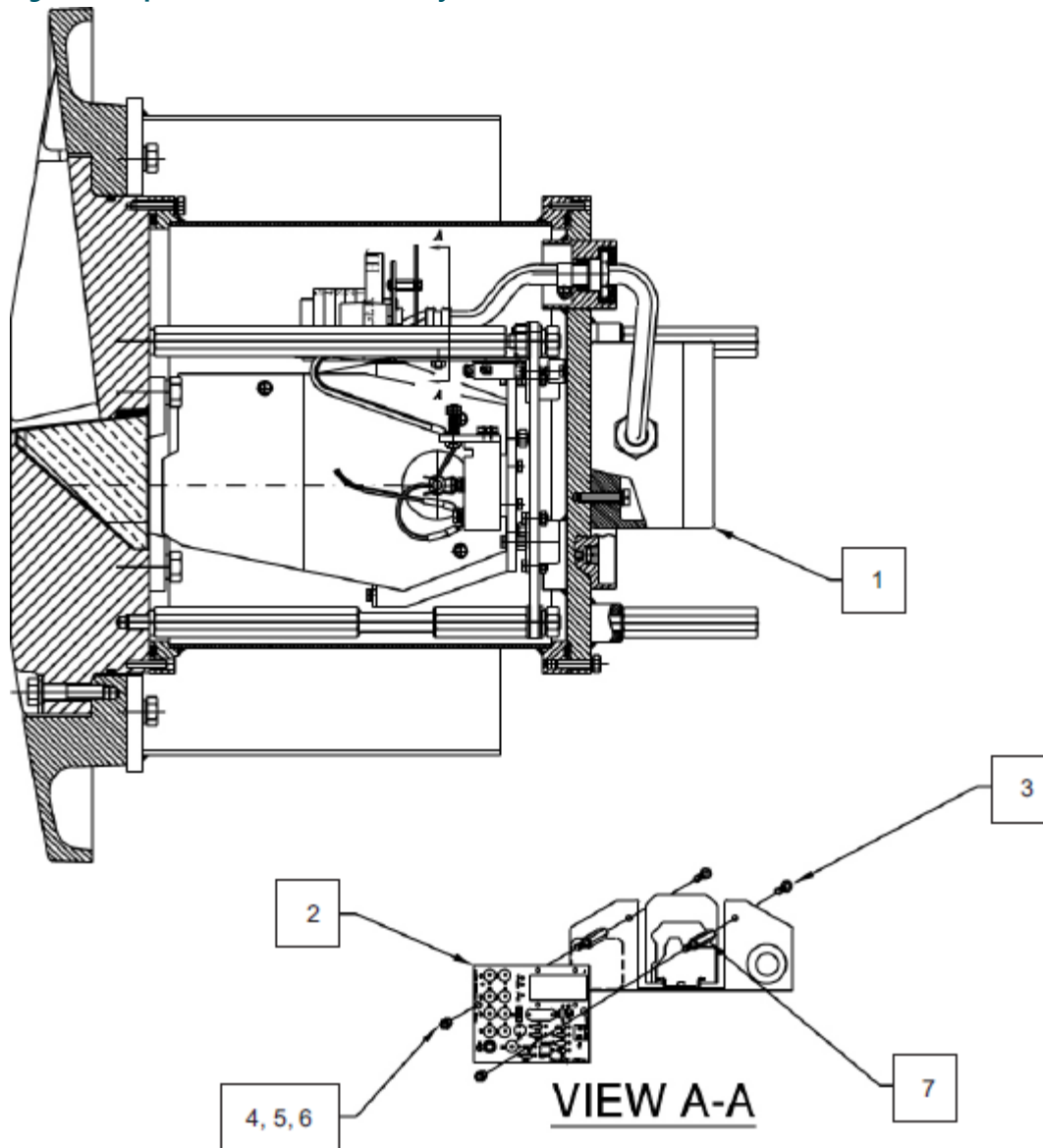


2.2.8 MALSR/ALSF In-pavement Flasher (with PCB) Parts List

See Figure 9 . Refer below for the in-pavement flasher with PCB parts list. The part number for the in-pavement flasher with PCB is 44A6234-2.

Item	Description	Part Number	Quantity	Note
1	E2628 in-pavement flasher	1440.02.050	1	
2	PCB assembly in-pavement rigger interface	44A6235	1	
3	Screw, 6-32 x 3/8 pan head	64A0198-6	2	
4	Nut, 6-32 hex	65A0015-11	2	
5	Flat washer, #6	66A0015-11	2	
6	Exterior lock washer, #6	66A0039-4	2	
7	Standoff hex M-F 1/2 x , 6-32	66A0129-8	2	
NS	Male disc, 16-14 AWG 0.25 x 6-32	70A0328	2	

Figure 9: In-pavement Flasher Assembly (with PCB)



2.2.9 MALSR/ALSF In-pavement Optical Assembly Parts List

See [Figure 9](#) through [Figure 11](#) Refer below for the in-pavement optical assembly parts list. The part number for the optical assembly is 4071.59.180.

Item	Description	Part Number	Quantity	Note
1	Reflector assembly	4070.97.110	1	
2	Reflector clamp, stainless steel	4070.97.120	1	
3	Screw, SCH M4 x 10, stainless steel	7110.08.362	17	
4	Spring washer, M4, stainless steel	7284.10.416	32	
5	Reflector, aluminum, left	4070.95.470	1	
6	Reflector, aluminum, right	4070.95.470	1	
7	Hex nut, M4, stainless steel	7150.53.180	18	
8	Flat washer, M4, stainless steel	7283.04.230	16	
9	Terminal block, support	4071.57.680	1	
10	Blind rivets	7272.90.530	2	
11	End barrier	6112.45.400	2	
12	Terminal block	6112.45.420	5	
13	Marker (1,2,3,4,5)	6112.45.422	5	
14	Terminal block	6112.45.410	1	
15	Marker (HT)	6112.45.412	1	
16	Trigger transformer	1440.02.180	1	
17	Cable clamp	6126.22.050	1	
18	Stud, L 12 x M4 M/F	4060.65.570	1	
19	Interlock switch support, stainless steel	4090.97.050	1	
20	Screw #6-32 UNC ¼, stainless steel	7211.10.601	2	
21	Screw #6-32 UNC ½, stainless steel	7211.10.603	1	
22	Hex nut #6-32, stainless steel	7250.08.011	1	
23	Interlock switch	6150.90.120	1	
24	Screw M5 x 16, stainless steel	7110.08.561	4	
25	Spring washer, M5, stainless steel	7284.10.426	8	
26	Hex nut, M5, stainless steel	7150.53.200	4	
27	Optical support, aluminum	4070.95.320	1	
28	Main support, aluminum	4070.95.310	1	
29	Screw SCH M4 x 16, stainless steel	7110.08.370	9	
30	Lamp support	4070.97.070	2	
31	Tab (6.3 - diameter 4)	6111.87.090	2	
32	Helicoil M4, stainless steel	7162.08.240	8	
33	Spade connector, A4-2.5	6110.12.005	2	
34	Insulating flexi therm, ¼-in.	6108.75.807		
35	Insulated wire, 16 AWG, 9 kV	6103.93.010		
36	Xenon flashing tube	2990.82.650	1	
37	Lampholder, brass	6130.99.370	2	

Parts

Item	Description	Part Number	Quantity	Note
38	Screw M4 x 25, stainless steel	7110.08.383	1	
39	Spring D.7 x 16, stainless steel	5000.04.690	1	
40	Connector, H.V., trigger wire	4070.97.090	1	
41	Screw M4 x 20, stainless steel	7110.08.377	2	
42	Screw M5 x 20, stainless steel	7110.08.443	4	
43	Helicoil, M5, stainless steel	7162.08.250	4	
44	Lamp holder	4070.97.080	2	
45	Grommet	6126.20.565	1	
46	Reflector holder, stainless steel	4070.95.680	1	
47	Shock absorber	7030.00.010	3	
48	End plate for terminal block	6112.45.421	1	
49	End plate for terminal block	6112.45.411	1	

Figure 10: In-pavement Flasher Optical Assembly (Side View)

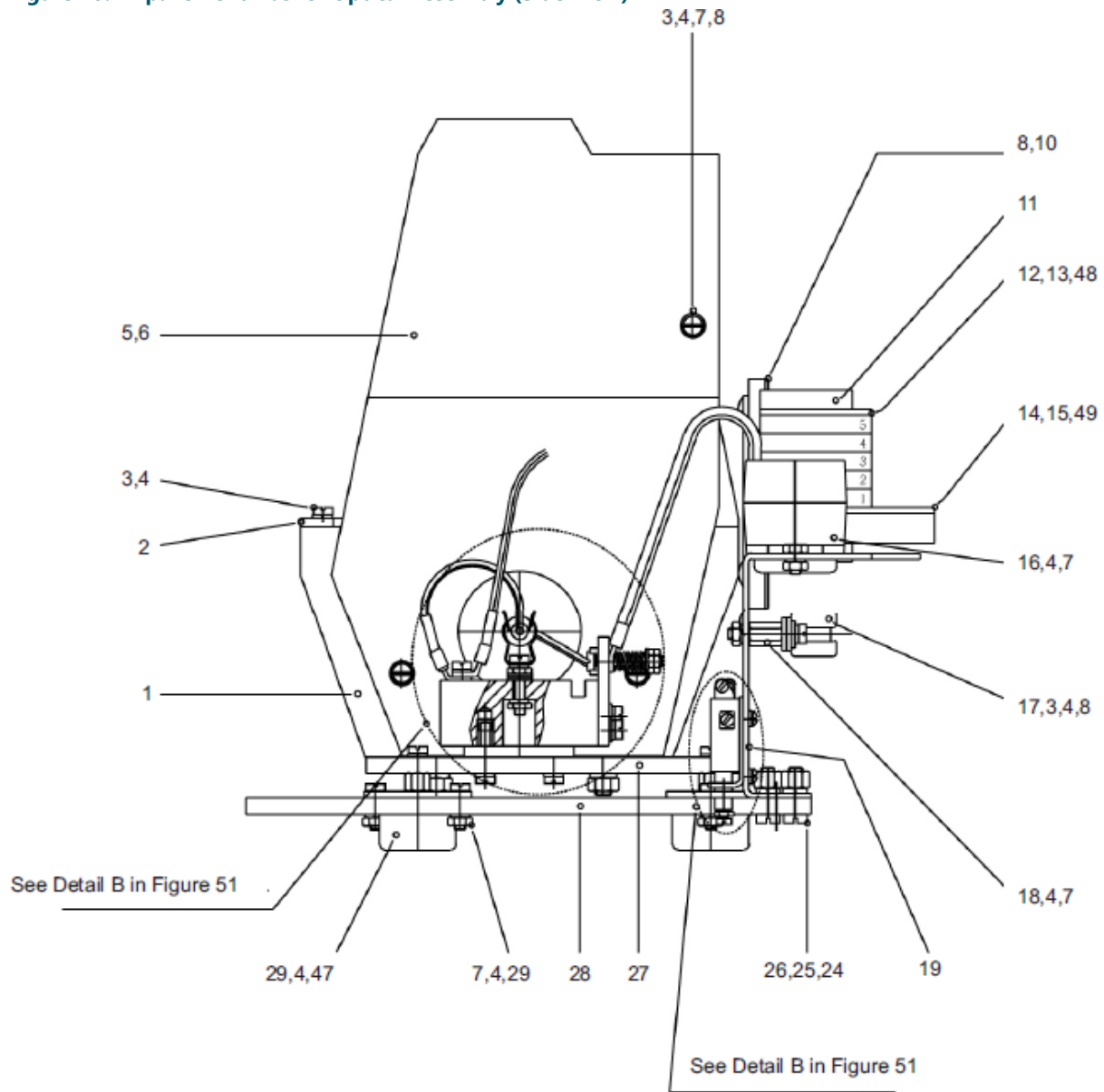


Figure 11: In-pavement Flasher Optical Assembly (Detail A and Detail B)

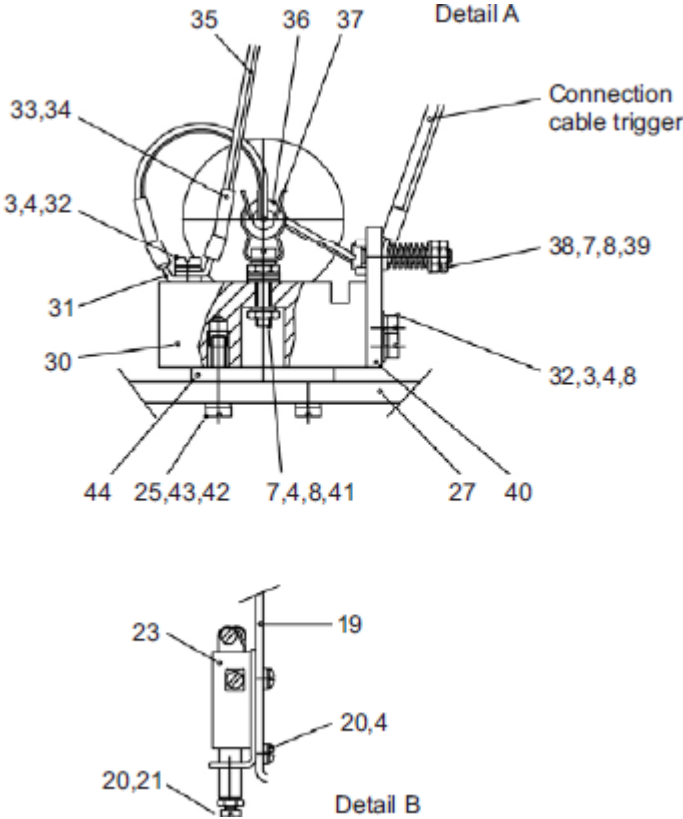
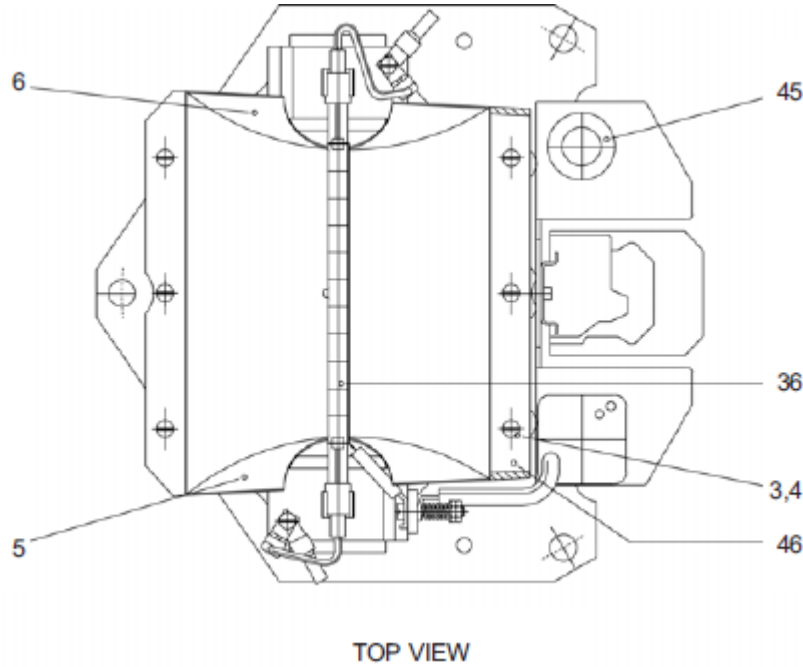


Figure 12: In-pavement Flasher Optical Assembly (Top View)



2.2.10 Optional Parts

See [Figure 38](#) . Refer below for optional parts.

Item	Description	Part Number	Quantity	Note
26	6-core cable	6104.90.206FT	AR	A
NS	Connector kit, in-pavement flasher, male plug	70A0618	1	
NS	Connector kit, in-pavement flasher, female receptacle	70A0619	1	

NOTE A: One 6-core cable is needed with each in-pavement flasher. Please specify total length of cable required (in feet) when ordering.

NS: Not shown

AR: As required

2.2.11 Separate Line Item Optional Parts

This subsection provides separate optional line items.

Item	Description	Part Number	Quantity	Note
NS	Flasher tester (Type FLT)	44D1686-1		
NS	Frangible coupling	• 44B0180	1	
	• Frangible coupling (Type EMT)	• 62B0064		
	• Frangible coupling (Type F2)			
NS	High voltage wire, AWG 12, 3 kV	89A0110-1	AR	B
NS	Lamps	• 48A0447	1	
	• Lamps, PAR-38, 150 W, 120 Vac, standard, for MALSR only	• 48A0118		
	• Lamps, PAR-56, 300 W, 120 Vac	• 48A0094		
	• Lamps, PAR-56, 200 W, 6.6 A	• 48A0091		
	• Lamps, PAR-56, 300 W, 20 A	• 48A0092		
	• Lamps, PAR-56, 500 W, 20 A			
NS	Power transformer, 15 kVA (Type T15) for MALSR only	44D1685-1	1	
39	LB-4 deep base		1	C

NOTE A: Used only on aluminum-tower cross arms to mount PAR-56 or PAR-38 lights, or on fiberglass tower for PAR-38 lamp holders.

NOTE B: Used to interconnect flash head and individual control cabinet. Customer must specify length of wire. Wire is supplied in 500 ft spools only.

NOTE C: See [Figure 12](#). Contact ADB Safegate for part number.

NS: Not Shown

AR: As required


2.2.12 Separate Line Items Required Parts List

This subsection provides parts for separate line items that are required.

Item	Description	Part Number	Quantity	Note
NS	Junction box assembly	44D1653	1	
NS	Aiming device kit			
	Aiming device, MALSR/ALSF	4D1654	1	
	Aiming device (for MALSR PAR-56 lamps only)	44D1654-1	1	
	Aiming device (for MALSR PAR-56 and PAR-38 lamps)	44D1654-2	1	
NS	Spare parts trunk, for ALSF only	44D1652	1	
NS	Power transformer, 15 kVA, MALSR only	44D1685-1	1	
NS: Not Shown				

2.2.13 Recommended Spare Parts

This subsection provides recommended spare parts for the primary control cabinet, flashing light assembly, individual control cabinet, in-pavement flasher final assembly, and in-pavement flasher optical assembly.

 **Note** This spare parts list assumes the spare parts trunk is already available.

2.2.13.1 Primary Control Cabinet Spare Parts

See [Figure 1](#) through [Figure 3](#) . Refer below for Primary Control Cabinet spare parts.

Item	Description	Part Number	Note
2	Fuse, 5A (BUSS AGC-5)	47A0015	
3	Fuse, 15 A (BUSS AGC-15)	47A0016	
6	Fuse, 1 A, S.B. (BUSS MDL-1)	47A0017	
7	Fuse, 10 A (BUSS AGC-10)	47A0018	
12	Varistor	32A0011	

2.2.13.2 Flashing Light Assembly Spare Parts

See [Figure 4](#) . Refer below for flashing light assembly spare parts.

Item	Description	Part Number	Note
2	Flash lamp	48B0022	
7	Trigger transformer assembly	44B1780-1	

2.2.13.3 Individual Control Cabinet Spare Parts

See [Figure 5](#) . Refer below for Individual Control Cabinet spare parts.

Item	Description	Part Number	Note
3	Relay Relay, DPDT, 120 Vac, 15 A at 277 Vac, ALSF only Relay, DPDT, 120 Vac, 15 A at 277 Vac, MALSR only	53A0260 53A0183	
4	Fuse, 2 A, 250 V, SLO-BLO (BUSS MDA-2)	47A0049	
15	Relay, DPDT, coil, 120 Vac	53A0182	

2.2.13.4 In-pavement Flasher Spare Parts

See [Figure 8](#) . Refer below for in-pavement flasher final assembly spare parts.

Item	Description	Part Number	Note
5	Lens, glass	5050.01.300	
7	Sealant, RTV	7835.55.150	
8	O-ring, 11.984 diameter, rubber	7080.90.390	
10	O-ring, 10.975 diameter, rubber	7080.90.380	

2.2.13.5 In-pavement Flasher Optical Assembly Spare Parts

See [Figure 9](#) through [Figure 11](#) . Refer below for in-pavement flasher optical assembly spare parts.

Item	Description	Part Number	Note
16	Trigger transformer	1440.02.180	
23	Interlock switch, MS16106-1	6150.90.120	
36	Xenon flashing tube, P4070.97.140.E	2990.82.650	

Appendix A: SUPPORT

Our experienced engineers are available for support and service at all times, 24 hour/7 days a week. They are part of a dynamic organization making sure the entire ADB SAFEGATE is committed to minimal disturbance for airport operations.

ADB SAFEGATE Support

Live Technical Support - Americas

If at any time you have a question or concern about your product, just contact ADB SAFEGATE's technical service department. Trained in all areas of system issues, troubleshooting, quality control and technical assistance, our highly experienced Technical support specialists are available 24 hours a day, seven days a week to provide assistance over the phone.

ADB SAFEGATE **Americas Technical Service & Support (US & Canada): +1-800-545-4157**

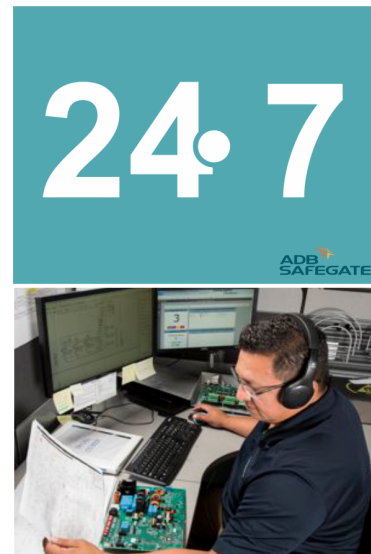
ADB SAFEGATE Americas Technical Service & Support (International): +1-614-861-1304

During regular business hours, you can also Chat with a Service Technician. We look forward to working with you!

Before You Call

When you have an airfield lighting or system control system problem it is our goal to support airfield maintenance staff as quickly as possible. To support this effort we ask that you have the following information ready before calling.

- The *airport code*
- If not with an airport, then company name (prefer customer id number)
- Contact phone number and email address
- Product with part number preferable or product number
- Have you reviewed the product's manual and troubleshooting guide
- Do you have a *True RMS* meter available (and any other necessary tools)
- Be located with the product ready to troubleshoot



Note

For more information, see www.adbsafegate.com, or contact ADB SAFEGATE Support via email at support@adbsafegate.com or

Brussels: +32 2 722 17 11

Rest of Europe: +46 (0) 40 699 17 40

Americas: +1 614 861 1304. Press 3 for technical service or press 4 for sales support.

China: +86 (10) 8476 0106

A.1 ADB SAFEGATE Website

The ADB SAFEGATE website, www.adbsafegate.com, offers information regarding our airport solutions, products, company, news, links, downloads, references, contacts and more.

A.2 Recycling

A.2.1 Local Authority Recycling

The disposal of ADB SAFEGATE products is to be made at an applicable collection point for the recycling of electrical and electronic equipment. The correct disposal of equipment prevents any potential negative consequences for the environment and human health, which could otherwise be caused by inappropriate waste handling. The recycling of materials helps to conserve natural resources. For more detailed information about recycling of products, contact your local authority city office.

A.2.2 ADB SAFEGATE Recycling

ADB SAFEGATE is fully committed to environmentally-conscious manufacturing with strict monitoring of our own processes as well as supplier components and sub-contractor operations. ADB SAFEGATE offers a recycling program for our products to all customers worldwide, whether or not the products were sold within the EU.

ADB SAFEGATE products and/or specific electrical and electronic component parts which are fully removed/separated from any customer equipment and returned will be accepted for our recycling program.

All items returned must be clearly labeled as follows:

- For *ROHS/WEEE* Recycling
- Sender contact information (Name, Business Address, Phone number).
- Main Unit Serial Number.

ADB SAFEGATE will continue to monitor and update according for any future requirements for *EU directives* as and when *EU member states* implement new *regulations* and or *amendments*. It is our aim to maintain our *compliance plan* and assist our customers.

Company Addresses

ADB SAFEGATE, Belgium	ADB SAFEGATE BV Leuvensesteenweg 585, B-1930 Zaventem Belgium
Contact: Tel.: +32 2 722 17 11 Fax: +32 2 722 17 64	Email: marketing@adbsafegate.com Internet: www.adbsafegate.com
ADB SAFEGATE, Americas	ADB SAFEGATE Americas LLC 977 Gahanna Parkway, Columbus, OH 43230 USA
Contact: Tel.: +1 (614) 861 1304 Fax: +1 (614) 864 2069	Email: sales.us@adbsafegate.com Internet: www.adbsafegate.com
ADB SAFEGATE, Sweden	ADB SAFEGATE Sweden AB Djurhagegatan 19 SE-213 76 Malmö Sweden
Contact: Tel.: +46 (0)40 699 17 00 Fax: +46 (0)40 699 17 30	Email: marketing@adbsafegate.com Internet: www.adbsafegate.com
ADB SAFEGATE, China	ADB SAFEGATE Airfield Technologies Ltd. China Unit 603, D Block, CAMIC International Convention Center, No 3, Hua Jia Di East road, ChaoYang district, Beijing 100102 P.R. China
Contact: Tel.: +86 (10) 8476 0106 Fax: +86 (10) 8476 0090	Email: china@safegate.com Internet: www.adbsafegate.com
ADB SAFEGATE, Germany	ADB SAFEGATE Germany GmbH Konrad-Zuse-Ring 6, D-68163 Mannheim Germany
Contact: Tel.: +49 (621) 87 55 76-0 Fax: +49 (621) 87 55 76-55	Email: marketing@adbsafegate.com Internet: www.adbsafegate.com



**Powering Your Airport Performance
from Approach to Departure**

adbsafegate.com

Copyright © ADB SAFEGATE, all rights reserved

