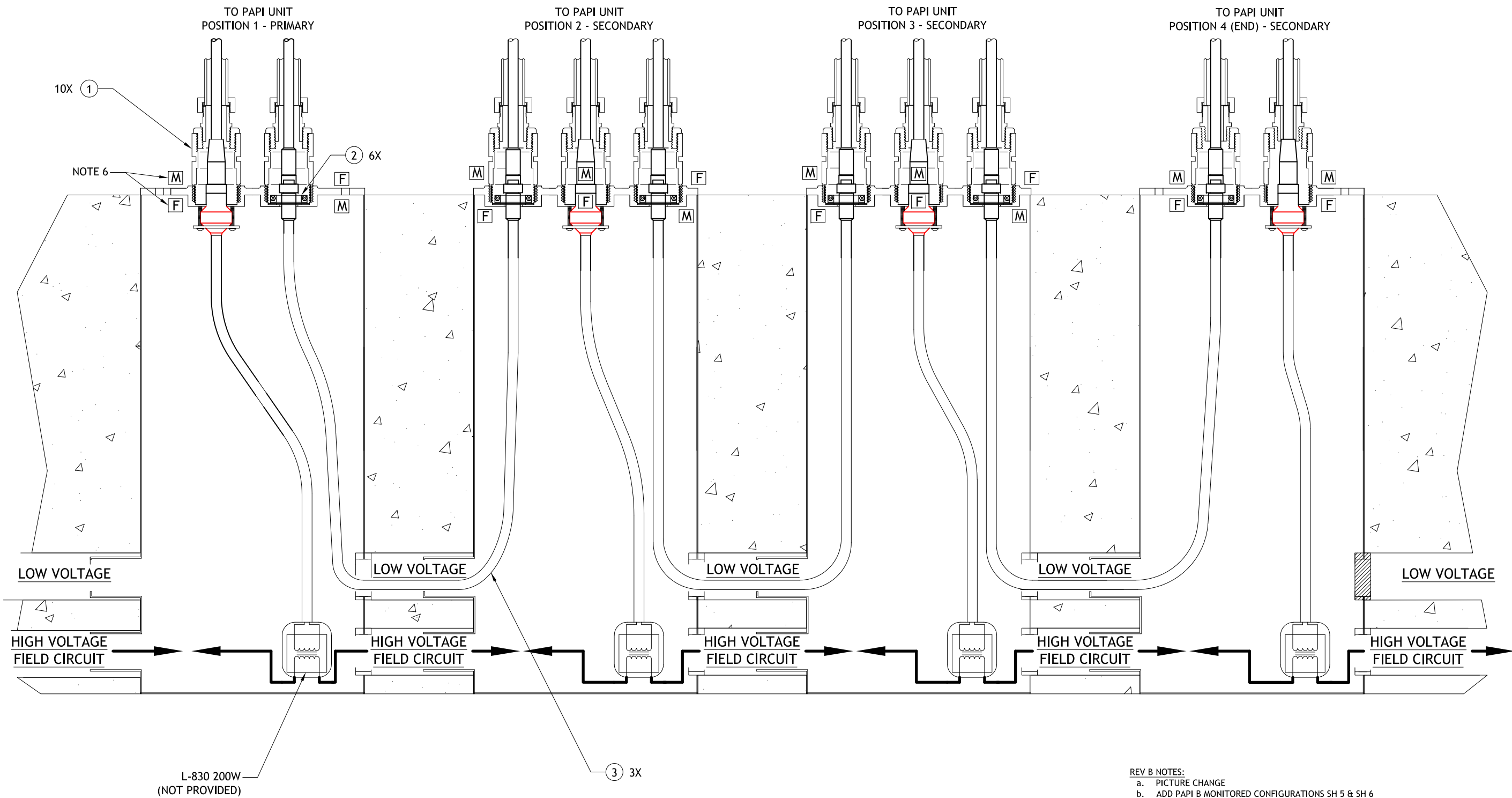


4-BOX PAPI B CURRENT DRIVEN FIELD INSTALLATION (NON-REDUNDANT)



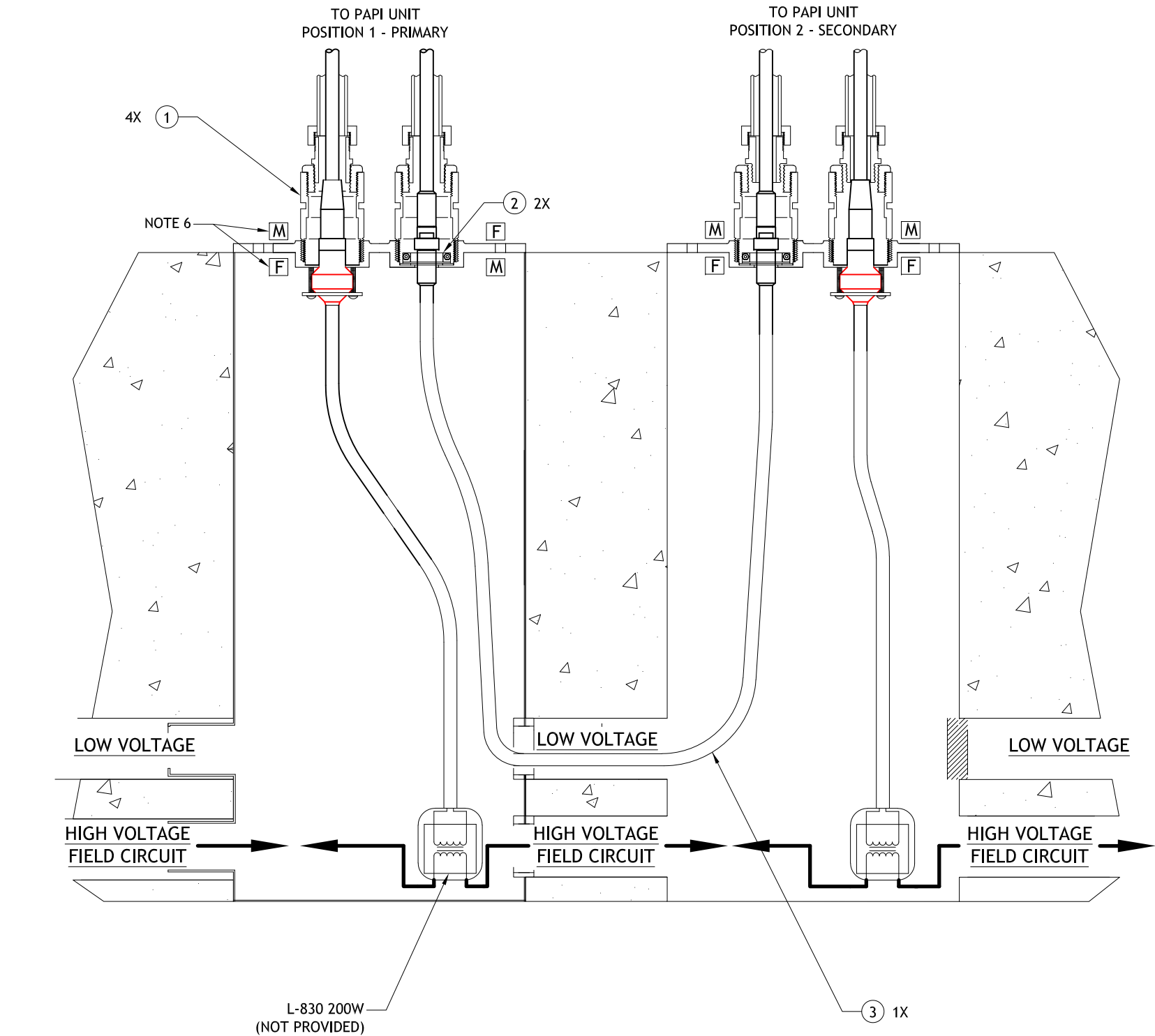
- NOTES:
- ALL EXTERNAL CABLES ARE PROVIDED IN ADB KIT AK00032-B40-01 LED PAPI B 4-BOX CURRENT EXTERNAL CABLES. KIT AK00032 IS INCLUDED WITH THE LED PAPI SYSTEM.
 - DURING INSTALLATION OF CABLE SYSTEM, LEAVE CAPS IN PLACE TO PROTECT CONNECTORS/RECEPTACLES. REMOVE CAPS ONLY WHEN MAKING FINAL CONNECTIONS.
 - FOR CORRECT PAPI UNIT POSITIONS AS ASSOCIATED TO THE RUNWAY, LOCATE UNITS PER ADB DOCUMENT DA00026-XXX-01 SHEET 5.
 - SEE SHEET 4 FOR PAPI UNIT TO EARTH GROUND CONNECTION.
 - REFERENCE ADB DOCUMENT # 43A4165/XXXX FOR INTERNAL WIRING OF PAPI UNITS.
 - M/F INDICATES POLARITY OF FRANGIBLE CORD ABOVE AND BELOW BASE PLATE.

AK00032-B40-001 LED PAPI 4-BOX CURRENT EXT CABLES			
ITEM NO	PART NUMBER	DESCRIPTION	QTY
1	62A0711	COUPLING 2" FRANG I/O THREADED	10
2	63A0563	CABLE CLAMP 961-X	6
3	73A0178/40	REMKE 40FT 6-P MALE-IN/FEM-IN 16/6 STOW	3

- REV B NOTES:
- PICTURE CHANGE
 - ADD PAPI B MONITORED CONFIGURATIONS SH 5 & SH 6

CONTROLLED COPY			
Unauthorized duplication of this document in whole or part is prohibited. Initialed in RED ink below indicates authorized copy.			
INITIAL & DATE:			
ADB SAFEGATE			
P.O. Box 30829 Tel: (614) 861-1304 977 Gahanna Parkway Fax: (614) 864-2069 Columbus, OH 43230			
DRAWING TITLE: LED PAPI STYLE B AND B REDUNDANT FIELD CABLE INSTALLATION DETAILS L-880 / L-881			
B	---	SEE REV B NOTES	DLR 22JUN21
A	---	INITIAL RELEASE	DLR 1 MAR 2021
REV LEVEL	ECO NUMBER	REVISION DESCRIPTION	DRAWN BY REV DATE
ASSOCIATED DRAWINGS:		DRAWN BY: D RUFFINI	DRAWN DATE: 1 MAR 2021
Information contained on this drawing is to be used expressly in accord with purpose for which it was submitted. Any disclosure of this information is strictly prohibited except as ADB Airfield Solutions, Inc. may otherwise agree in writing. Copyright © 2011 ADB Airfield Solutions.			
SCALE: N/A		SHEET NUMBER: 1 OF 6	
DRAWING NUMBER: DA00028-XXX-01			REV. B

2-BOX PAPI B CURRENT DRIVEN FIELD INSTALLATION (NON-REDUNDANT)



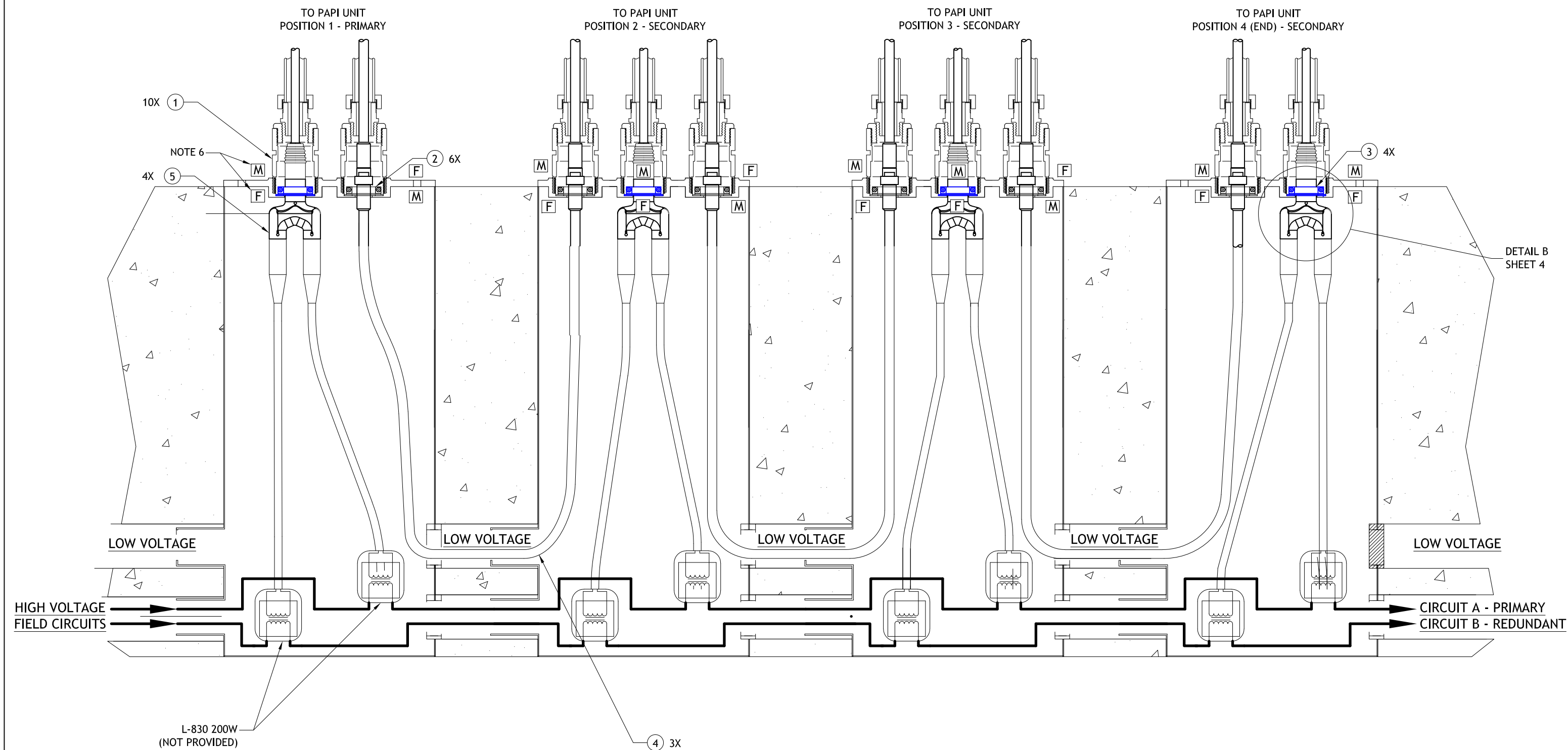
NOTES:

1. ALL EXTERNAL CABLES ARE PROVIDED IN ADB KIT AK00032-B20-01 LED PAPI 2-BOX CURRENT EXTERNAL CABLES. KIT AK00032 IS INCLUDED WITH THE LED PAPI SYSTEM.
2. DURING INSTALLATION OF CABLE SYSTEM, LEAVE CAPS IN PLACE TO PROTECT CONNECTORS/RECEPTACLES. REMOVE CAPS ONLY WHEN MAKING FINAL CONNECTIONS.
3. FOR CORRECT PAPI UNIT POSITIONS AS ASSOCIATED TO THE RUNWAY, LOCATE UNITS PER ADB DOCUMENT DA00026-XXX-01 SHEET 5.
4. SEE SHEET 4 FOR PAPI UNIT TO EARTH GROUND CONNECTION.
5. REFERENCE ADB DOCUMENT # 43A4165/XXXX FOR INTERNAL WIRING OF PAPI UNITS.
6. M/F INDICATES POLARITY OF FRANGIBLE CORD ABOVE AND BELOW BASE PLATE.

AK00032-B20-001 LED PAPI 2-BOX CURRENT EXT CABLES			
ITEM NO	PART NUMBER	DESCRIPTION	QTY
1	62A0711	COUPLING 2" FRANG I/O THREADED	4
2	63A0563	CABLE CLAMP 961-X	2
3	73A0178/40	REMKE 40FT 6-P MALE-IN/FEM-IN 16/6 STOW	1

CONTROLLED COPY			
Unauthorized duplication of this document in whole or part is prohibited. Initialed in RED ink below indicates authorized copy.			
INITIAL & DATE:			
ADB SAFEGATE			
P.O. Box 30829 Tel: (614) 861-1304 977 Gahanna Parkway Fax: (614) 864-2069 Columbus, OH 43230			
DRAWING TITLE: LED PAPI STYLE B AND B REDUNDANT FIELD CABLE INSTALLATION DETAILS L-880 / L-881			
B	---	SEE REV B NOTES	DLR 22JUN21
A	----	INITIAL RELEASE	DLR 1 MAR 2021
REV LEVEL	ECO NUMBER	REVISION DESCRIPTION	DRAWN BY REV DATE
ASSOCIATED DRAWINGS:		DRAWN BY: D RUFFINI	DRAWN DATE: 1 MAR 2021
Information contained on this drawing is to be used expressly in accord with purpose for which it was submitted. Any disclosure of this information is strictly prohibited except as ADB Airfield Solutions, Inc. may otherwise agree in writing. Copyright © 2011 ADB Airfield Solutions.			
SCALE: N/A			SHEET NUMBER: 2 OF 6
DRAWING NUMBER: DA00028-XXX-01			REV. B

4-BOX PAPI B REDUNDANT CURRENT DRIVEN FIELD INSTALLATION



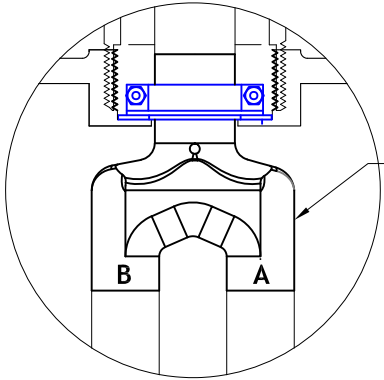
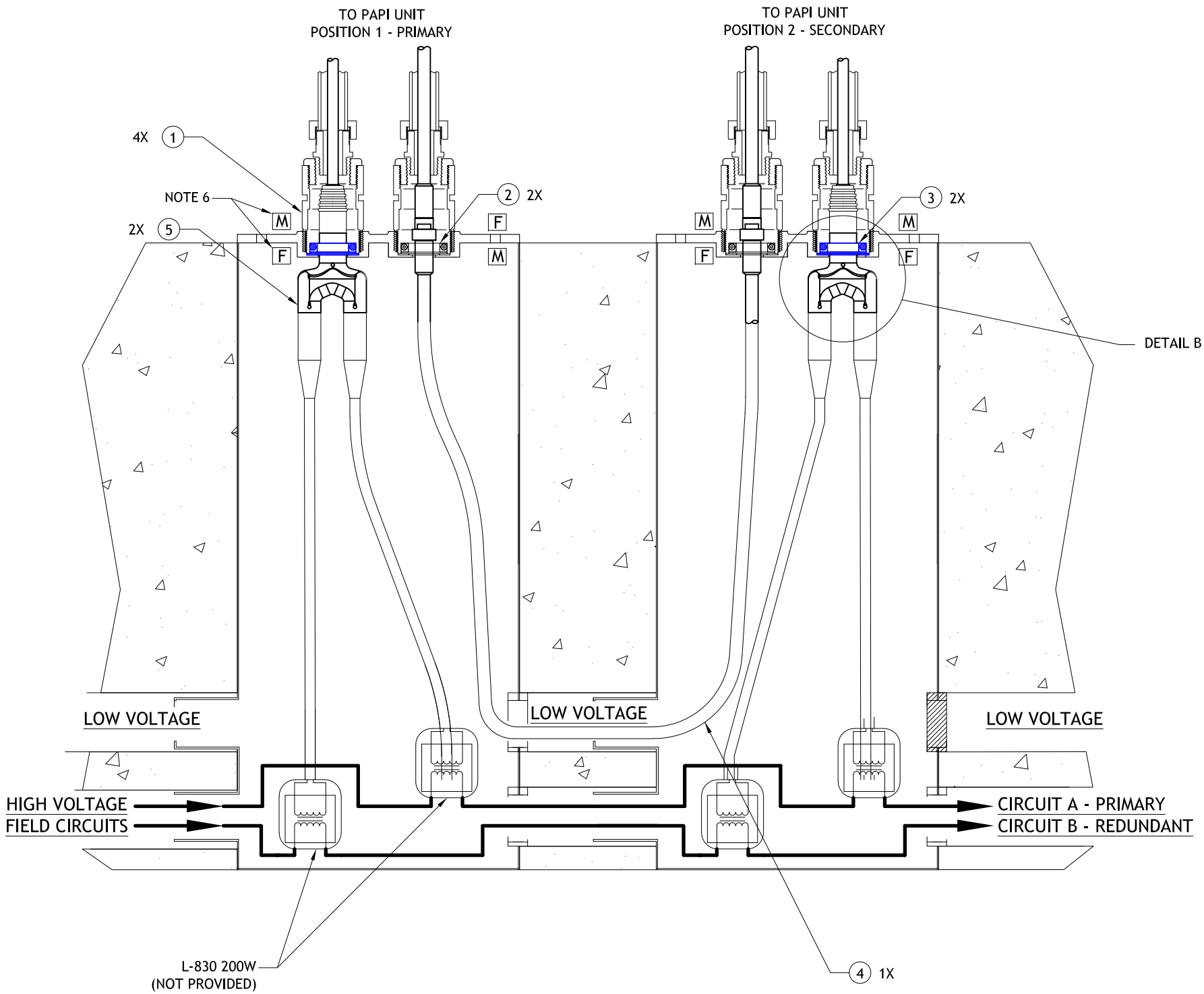
AK00032-R40-001 LED PAPI B 4-BOX EXT CABLES REDUNDANT			
ITEM NO	PART NUMBER	DESCRIPTION	QTY
1	62A0711	COUPLING 2" FRANG I/O THREADED	10
2	63A0563	CABLE CLAMP 961-X	6
3	63A0563/1	CABLE CLAMP L804RGL	4
4	73A0178/40	REMKE 40FT 6-P MALE-IN/FEM-IN 16/6 STOW	3
5	EW00068-000-01	PARALLEL WYE CONN 4 POLE TO 2/2 POLE	4

NOTES:

- ALL EXTERNAL CABLES ARE PROVIDED IN ADB KIT AK00032-R40-01 LED PAPI B 4-BOX EXTERNAL CABLES REDUNDANT. KIT AK00032 IS INCLUDED WITH THE LED PAPI SYSTEM.
- DURING INSTALLATION OF CABLE SYSTEM, LEAVE CAPS IN PLACE TO PROTECT CONNECTORS/RECEPTACLES. REMOVE CAPS ONLY WHEN MAKING FINAL CONNECTIONS.
- FOR CORRECT PAPI UNIT POSITIONS AS ASSOCIATED TO THE RUNWAY, LOCATE UNITS PER ADB DOCUMENT DA00026-XXX-01 SHEET 5.
- SEE SHEET 4 FOR PAPI UNIT TO EARTH GROUND CONNECTION.
- REFERENCE ADB DOCUMENT # 43A4165/XXXX FOR INTERNAL WIRING OF PAPI UNITS.
- M/F INDICATES POLARITY OF FRANGIBLE CORD ABOVE AND BELOW BASE PLATE.

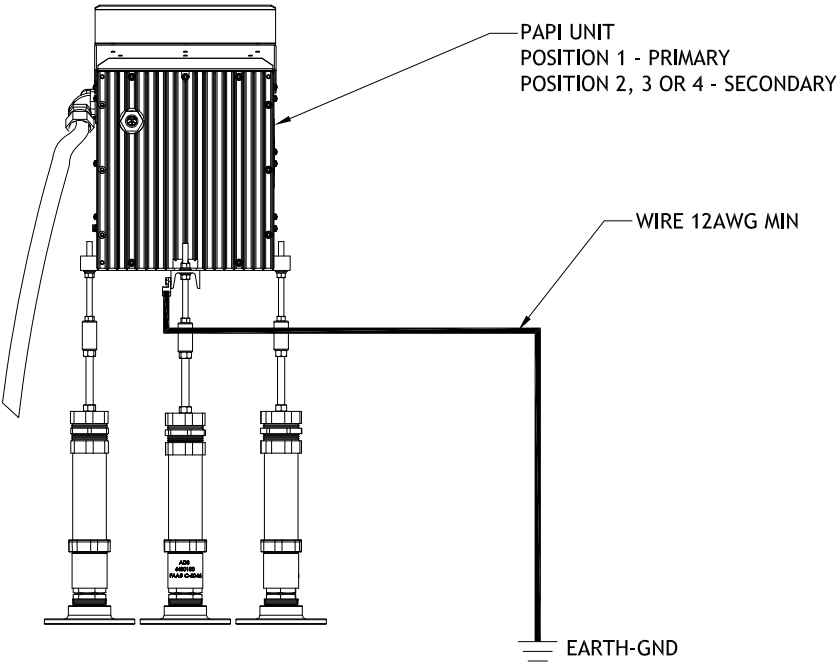
--	--	--	--	--	--	--	--	--	--	--	--	--	--	--	--	--	--	--	--	--	--	--	--	--	--	--	--	--	--	--	--	--	--	--	--	--	--	--	--	--	--	--	--	--	--	--	--	--	--	--	--	--	--	--	--	--	--	--	--	--	--	--	--	--	--	--	--	--	--	--	--	--	--	--	--	--	--	--	--	--	--	--	--	--	--	--	--	--	--	--	--	--	--	--	--	--	--	--	--	--	--	--	--	--	--	--	--	--	--	--	--	--	--	--	--	--	--	--	--	--	--	--	--	--	--	--	--	--	--	--	--	--	--	--	--	--	--	--	--	--	--	--	--	--	--	--	--	--	--	--	--	--	--	--	--	--	--	--	--	--	--	--	--	--	--	--	--	--	--	--	--	--	--	--	--	--	--	--	--	--	--	--	--	--	--	--	--	--	--	--	--	--	--	--	--	--	--	--	--	--	--	--	--	--	--	--	--	--	--	--	--	--	--	--	--	--	--	--	--	--	--	--	--	--	--	--	--	--	--	--	--	--	--	--	--	--	--	--	--	--	--	--	--	--	--	--	--	--	--	--	--	--	--	--	--	--	--	--	--	--	--	--	--	--	--	--	--	--	--	--	--	--	--	--	--	--	--	--	--	--	--	--	--	--	--	--	--	--	--	--	--	--	--	--	--	--	--	--	--	--	--	--	--	--	--	--	--	--	--	--	--	--	--	--	--	--	--	--	--	--	--	--	--	--	--	--	--	--	--	--	--	--	--	--	--	--	--	--	--	--	--	--	--	--	--	--	--	--	--	--	--	--	--	--	--	--	--	--	--	--	--	--	--	--	--	--	--	--	--	--	--	--	--	--	--	--	--	--	--	--	--	--	--	--	--	--	--	--	--	--	--	--	--	--	--	--	--	--	--	--	--	--	--	--	--	--	--	--	--	--	--	--	--	--	--	--	--	--	--	--	--	--	--	--	--	--	--	--	--	--	--	--	--	--	--	--	--	--	--	--	--	--	--	--	--	--	--	--	--	--	--	--	--	--	--	--	--	--	--	--	--	--	--	--	--	--	--	--	--	--	--	--	--	--	--	--	--	--	--	--	--	--	--	--	--	--	--	--	--	--	--	--	--	--	--	--	--	--	--	--	--	--	--	--	--	--	--	--	--	--	--	--	--	--	--	--	--	--	--	--	--	--	--	--	--	--	--	--	--	--	--	--	--	--	--	--	--	--	--	--	--	--	--	--	--	--	--	--	--	--	--	--	--	--	--	--	--	--	--	--	--	--	--	--	--	--	--	--	--	--	--	--	--	--	--	--	--	--	--	--	--	--	--	--	--	--	--	--	--	--	--	--	--	--	--	--	--	--	--	--	--	--	--	--	--	--	--	--	--	--	--	--	--	--	--	--	--	--	--	--	--	--	--	--	--	--	--	--	--	--	--	--	--	--	--	--	--	--	--	--	--	--	--	--	--	--	--	--	--	--	--	--	--	--	--	--	--	--	--	--	--	--	--	--	--	--	--	--	--	--	--	--	--	--	--	--	--	--	--	--	--	--	--	--	--	--	--	--	--	--	--	--	--	--	--	--	--	--	--	--	--	--	--	--	--	--	--	--	--	--	--	--	--	--	--	--	--	--	--	--	--	--	--	--	--	--	--	--	--	--	--	--	--	--	--	--	--	--	--	--	--	--	--	--	--	--	--	--	--	--	--	--	--	--	--	--	--	--	--	--	--	--	--	--	--	--	--	--	--	--	--	--	--	--	--	--	--	--	--	--	--	--	--	--	--	--	--	--	--	--	--	--	--	--	--	--	--	--	--	--	--	--	--	--	--	--	--	--	--	--	--	--	--	--	--	--	--	--	--	--	--	--	--	--	--	--	--	--	--	--	--	--	--	--	--	--	--	--	--	--	--	--	--	--	--	--	--	--	--	--	--	--	--	--	--	--	--	--	--	--	--	--	--	--	--	--	--	--	--	--	--	--	--	--	--	--	--	--	--	--	--	--	--	--	--	--	--	--	--	--	--	--	--	--	--	--	--	--	--	--	--	--	--	--	--	--	--	--	--	--	--	--	--	--	--	--	--	--	--	--	--	--	--	--	--	--	--	--	--	--	--	--	--	--	--	--	--	--	--	--	--	--	--	--	--	--	--	--	--	--	--	--	--	--	--	--	--	--	--	--	--	--	--	--	--	--	--	--	--	--	--	--	--	--	--	--	--	--	--	--	--	--	--	--	--	--	--	--	--	--	--	--	--	--	--	--	--	--	--	--	--	--	--	--	--	--	--	--	--	--	--	--	--	--	--	--	--	--	--	--	--	--	--	--	--	--	--	--	--	--	--	--	--	--	--	--	--	--	--	--	--	--	--	--	--	--	--	--	--	--	--	--	--	--	--	--	--	--	--	--	--	--	--	--	--	--	--	--	--	--	--	--	--	--	--	--	--	--	--	--	--	--	--	--	--	--	--	--	--	--	--	--	--	--	--	--	--	--	--	--	--	--	--	--	--	--	--	--	--	--	--	--	--	--	--	--	--	--	--	--	--	--	--	--	--	--	--	--	--	--	--	--	--	--	--	--	--	--	--	--	--	--	--	--	--	--	--	--	--	--	--	--	--	--	--	--	--	--	--	--	--	--	--	--	--	--	--	--	--	--	--	--	--	--	--	--	--	--	--	--	--	--	--	--	--	--	--	--	--	--	--	--	--	--	--	--	--	--	--	--	--	--	--	--	--	--	--	--	--	--	--	--	--	--	--	--	--	--	--	--	--	--	--	--	--	--	--	--	--	--	--	--	--	--	--	--	--	--	--	--	--	--	--	--	--	--	--	--	--	--	--	--	--	--	--	--	--	--	--	--	--	--	--	--	--	--	--	--	--	--	--	--	--	--	--	--	--	--	--	--	--	--	--	--	--	--	--	--	--	--	--	--	--	--	--	--	--	--	--	--	--	--	--	--	--	--	--	--	--	--	--	--	--	--	--	--	--	--	--	--	--	--	--	--	--	--	--	--	--	--	--	--	--	--	--	--	--	--	--	--	--	--	--	--	--	--	--	--	--	--	--	--	--	--	--	--	--	--	--	--	--	--	--	--	--	--	--	--	--	--	--	--	--	--	--	--	--	--	--	--	--	--	--	--	--	--	--	--	--	--	--	--	--	--	--	--	--	--	--	--	--	--	--	--	--	--	--	--	--	--	--	--	--

2-BOX PAPI B REDUNDANT CURRENT DRIVEN FIELD INSTALLATION



DETAIL B: PAPI B REDUNDANT CIRCUIT IDENTIFICATION

DETAIL A: PAPI A OR B PRIMARY OR SECONDARY UNIT EARTH GROUND CONNECTION

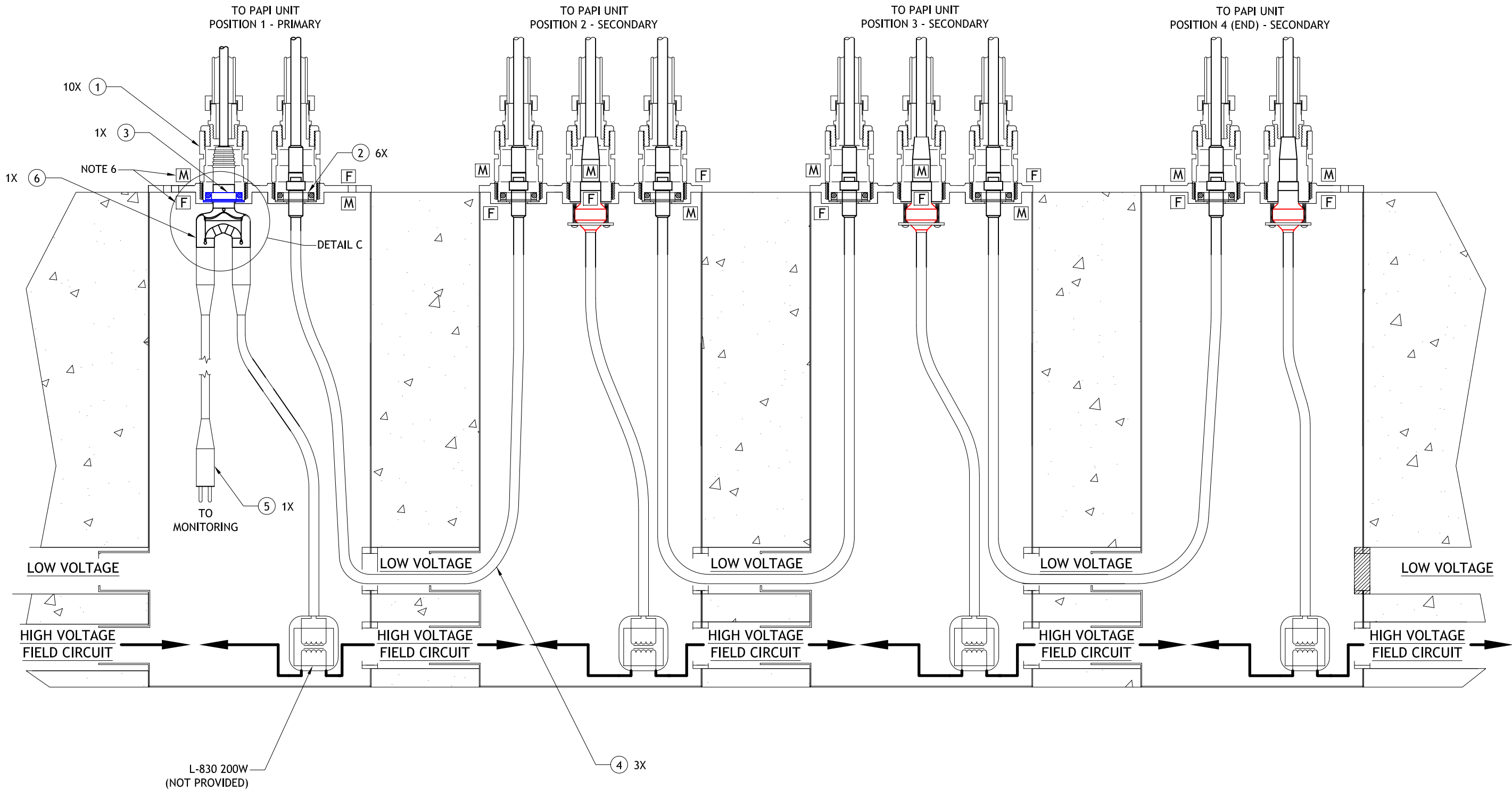


AK00032-R20-001 LED PAPI B 2-BOX EXT CABLES REDUNDANT			
ITEM NO	PART NUMBER	DESCRIPTION	QTY
1	62A0711	COUPLING 2" FRANG I/O THREADED	4
2	63A0563	CABLE CLAMP 961-X	2
3	63A0563/1	CABLE CLAMP L804RGL	2
4	73A0178/40	REMKE 40FT 6-P MALE-IN/FEM-IN 16/6 STOW	1
5	EW00068-000-01	PARALLEL WYE CONN 4 POLE TO 2/2 POLE	2

- NOTES:
- ALL EXTERNAL CABLES ARE PROVIDED IN ADB KIT AK00032-R20-001AK00032-R20-01 LED PAPI B 2-BOX EXTERNAL CABLES REDUNDANT. KIT AK00032 IS INCLUDED WITH THE LED PAPI SYSTEM.
 - DURING INSTALLATION OF CABLE SYSTEM, LEAVE CAPS IN PLACE TO PROTECT CONNECTORS/RECEPTACLES. REMOVE CAPS ONLY WHEN MAKING FINAL CONNECTIONS.
 - FOR CORRECT PAPI UNIT POSITIONS AS ASSOCIATED TO THE RUNWAY, LOCATE UNITS PER ADB DOCUMENT DA00026-XXX-01 SHEET 5.
 - SEE SHEET 4 FOR PAPI UNIT TO EARTH GROUND CONNECTION.
 - REFERENCE ADB DOCUMENT # 43A4165/XXXX FOR INTERNAL WIRING OF PAPI UNITS.
 - M/F INDICATES POLARITY OF FRANGIBLE CORD ABOVE AND BELOW BASE PLATE.

CONTROLLED COPY			
Unauthorized duplication of this document in whole or part is prohibited. Initialed in RED ink below indicates authorized copy.			
INITIAL & DATE:			
ADB SAFEGATE			
P.O. Box 30829 Tel: (614) 861-1304 977 Gahanna Parkway Fax: (614) 864-2069 Columbus, OH 43230			
DRAWING TITLE: LED PAPI STYLE B AND B REDUNDANT FIELD CABLE INSTALLATION DETAILS L-880 / L-881			
B	---	SEE REV B NOTES	DLR 22JUN21
A	---	INITIAL RELEASE	DLR 1 MAR 2021
REV LEVEL	ECO NUMBER	REVISION DESCRIPTION	DRAWN BY REV DATE
ASSOCIATED DRAWINGS:		DRAWN BY: D RUFFINI	DRAWN DATE: 1 MAR 2021
Information contained on this drawing is to be used expressly in accord with purpose for which it was submitted. Any disclosure of this information is strictly prohibited except as ADB Airfield Solutions, Inc. may otherwise agree in writing. Copyright © 2011 ADB Airfield Solutions.			
SCALE: N/A		SHEET NUMBER: 4 OF 6	
DRAWING NUMBER: DA00028-XXX-01			REV. B

4-BOX PAPI B CURRENT DRIVEN FIELD INSTALLATION (MONITORED, NON-REDUNDANT)

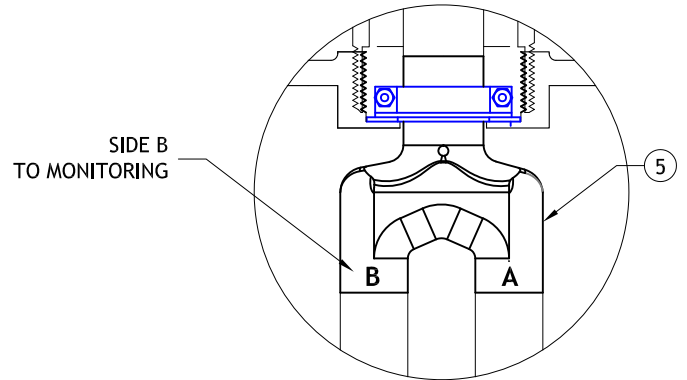
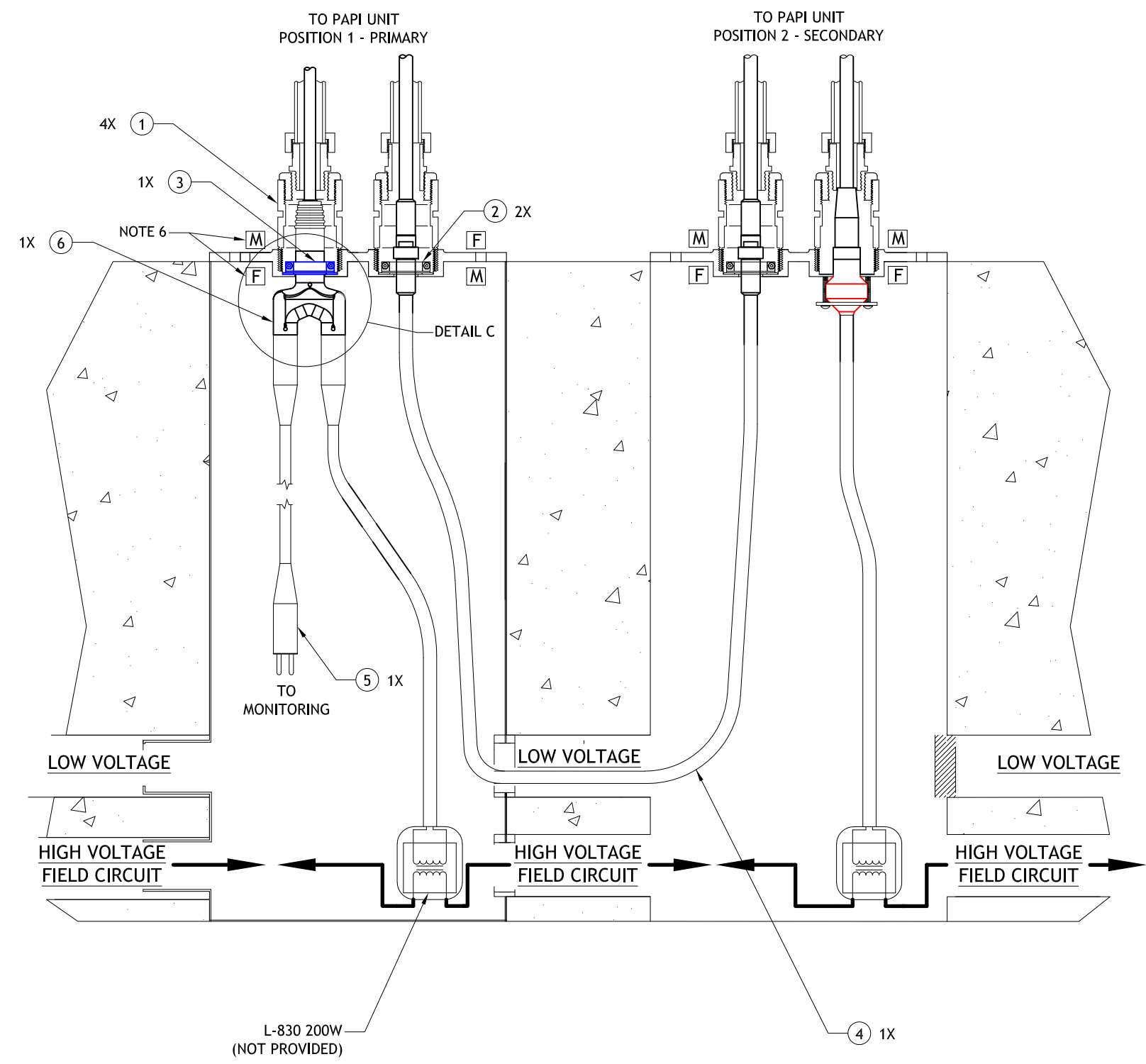


- NOTES:
1. ALL EXTERNAL CABLES ARE PROVIDED IN ADB KIT AK00032-M40-01 LED PAPI B 4-BOX CURRENT MONITORED EXTERNAL CABLES. KIT AK00032 IS INCLUDED WITH THE LED PAPI SYSTEM.
 2. DURING INSTALLATION OF CABLE SYSTEM, LEAVE CAPS IN PLACE TO PROTECT CONNECTORS/RECEPTACLES. REMOVE CAPS ONLY WHEN MAKING FINAL CONNECTIONS.
 3. FOR CORRECT PAPI UNIT POSITIONS AS ASSOCIATED TO THE RUNWAY, LOCATE UNITS PER ADB DOCUMENT DA00026-XXX-01 SHEET 5.
 4. SEE SHEET 4 FOR PAPI UNIT TO EARTH GROUND CONNECTION.
 5. REFERENCE ADB DOCUMENT # 43A4165/XXXX FOR INTERNAL WIRING OF PAPI UNITS.
 6. M/F INDICATES POLARITY OF FRANGIBLE CORD ABOVE AND BELOW BASE PLATE.

AK00032-M40-001 LED PAPI 4-BOX CURRENT MONITORED EXT CABLES			
ITEM NO	PART NUMBER	DESCRIPTION	QTY
1	62A0711	COUPLING 2" FRANG I/O THREADED	10
2	63A0563	CABLE CLAMP 961-X	6
3	63A0563/1	CABLE CLAMP L804 RGL	1
4	73A0178/40	REMKE 40FT 6-P MALE-IN/FEM-IN 16/6 STOW	3
5	73A0108/6	EXT CORD 6'16/2 SOW 600V STYLE 1&7	1
6	EW00068-000-01	PARALLEL WYE CONNECTOR 4 POLE TO 2/2 POLE	1

CONTROLLED COPY			
Unauthorized duplication of this document in whole or part is prohibited. Initialed in RED ink below indicates authorized copy.			
INITIAL & DATE:			
ADB SAFEGATE			
P.O. Box 30829 Tel: (614) 861-1304 977 Gahanna Parkway Fax: (614) 864-2069 Columbus, OH 43230			
DRAWING TITLE: LED PAPI STYLE B AND B REDUNDANT FIELD CABLE INSTALLATION DETAILS L-880 / L-881			
B	---	SEE REV B NOTES	DLR 22JUN21
A	----	INITIAL RELEASE	DLR 1 MAR 2021
REV LEVEL	ECO NUMBER	REVISION DESCRIPTION	DRAWN BY REV DATE
ASSOCIATED DRAWINGS:		DRAWN BY: D RUFFINI	DRAWN DATE: 1 MAR 2021
Information contained on this drawing is to be used expressly in accord with purpose for which it was submitted. Any disclosure of this information is strictly prohibited except as ADB Airfield Solutions, Inc. may otherwise agree in writing. Copyright © 2011 ADB Airfield Solutions.		SCALE: N/A	SHEET NUMBER: 5 OF 6 REV. B
DRAWING NUMBER: DA00028-XXX-01			

2-BOX PAPI B CURRENT DRIVEN FIELD INSTALLATION (MONITORED, NON-REDUNDANT)



DETAIL C: PAPI B MONITORING CIRCUIT IDENTIFICATION

AK00032-M20-001 LED PAPI 2-BOX CURRENT MONITORED EXT CABLES			
ITEM NO	PART NUMBER	DESCRIPTION	QTY
1	62A0711	COUPLING 2" FRANG I/O THREADED	4
2	63A0563	CABLE CLAMP 961-X	2
3	63A0563/1	CABLE CLAMP L804 RGL	1
4	73A0178/40	REMKE 40FT 6-P MALE-IN/FEM-IN 16/6 STOW	1
5	73A0108/6	EXT CORD 6'16/2 SOW 600V STYLE 1&7	1
6	EW00068-000-01	PARALLEL WYE CONNECTOR 4 POLE TO 2/2 POLE	1

- NOTES:
- ALL EXTERNAL CABLES ARE PROVIDED IN ADB KIT AK00032-M20-01 LED PAPI 2-BOX CURRENT MONITORED EXTERNAL CABLES. KIT AK00032 IS INCLUDED WITH THE LED PAPI SYSTEM.
 - DURING INSTALLATION OF CABLE SYSTEM, LEAVE CAPS IN PLACE TO PROTECT CONNECTORS/RECEPTACLES. REMOVE CAPS ONLY WHEN MAKING FINAL CONNECTIONS.
 - FOR CORRECT PAPI UNIT POSITIONS AS ASSOCIATED TO THE RUNWAY, LOCATE UNITS PER ADB DOCUMENT DA00026-XXX-01 SHEET 5.
 - SEE SHEET 4 FOR PAPI UNIT TO EARTH GROUND CONNECTION.
 - REFERENCE ADB DOCUMENT # 43A4165/XXXX FOR INTERNAL WIRING OF PAPI UNITS.
 - M/F INDICATES POLARITY OF FRANGIBLE CORD ABOVE AND BELOW BASE PLATE.

CONTROLLED COPY			
Unauthorized duplication of this document in whole or part is prohibited. Initialed in RED ink below indicates authorized copy.			
INITIAL & DATE: _____			
ADB SAFEGATE			
P.O. Box 30829 Tel: (614) 861-1304 977 Gahanna Parkway Fax: (614) 864-2069 Columbus, OH 43230			
DRAWING TITLE: LED PAPI STYLE B AND B REDUNDANT FIELD CABLE INSTALLATION DETAILS L-880 / L-881			
B	---	SEE REV B NOTES	DLR 22JUN21
A	----	INITIAL RELEASE	DLR 1 MAR 2021
REV LEVEL	ECO NUMBER	REVISION DESCRIPTION	DRAWN BY REV DATE
ASSOCIATED DRAWINGS:		DRAWN BY: D RUFFINI	DRAWN DATE: 1 MAR 2021
Information contained on this drawing is to be used expressly in accord with purpose for which it was submitted. Any disclosure of this information is strictly prohibited except as ADB Airfield Solutions, Inc. may otherwise agree in writing. Copyright © 2011 ADB Airfield Solutions.		SCALE: N/A SHEET NUMBER: 6 OF 6 REV. B	
DRAWING NUMBER: DA00028-XXX-01			