



Runway End Identifier Lights (REIL) Style A  
Style C, Style E

## Spare Parts

SP\_96A0008, Rev. A, 2020/07/20

  
**ADB  
SAFEGATE**



## A.0 Disclaimer / Standard Warranty

### CE certification

The equipment listed as CE certified means that the product complies with the essential requirements concerning safety and hygiene. The European directives that have been taken into consideration in the design are available on written request to ADB SAFEGATE.

### ETL certification

The equipment listed as ETL certified means that the product complies with the essential requirements concerning safety and FAA Airfield regulations. The FAA directives that have been taken into consideration in the design are available on written request to ADB SAFEGATE.

### All Products Guarantee

ADB SAFEGATE will correct by repair or replacement per the applicable guarantee above, at its option, equipment or parts which fail because of mechanical, electrical or physical defects, provided that the goods have been properly handled and stored prior to installation, properly installed and properly operated after installation, and provided further that Buyer gives ADB SAFEGATE written notice of such defects after delivery of the goods to Buyer. Refer to the Safety section for more information on Material Handling Precautions and Storage precautions that must be followed.

ADB SAFEGATE reserves the right to examine goods upon which a claim is made. Said goods must be presented in the same condition as when the defect therein was discovered. ADB SAFEGATE further reserves the right to require the return of such goods to establish any claim.

ADB SAFEGATE's obligation under this guarantee is limited to making repair or replacement within a reasonable time after receipt of such written notice and does not include any other costs such as the cost of removal of defective part, installation of repaired product, labor or consequential damages of any kind, the exclusive remedy being to require such new parts to be furnished.

ADB SAFEGATE's liability under no circumstances will exceed the contract price of goods claimed to be defective. Any returns under this guarantee are to be on a transportation charges prepaid basis. For products not manufactured by, but sold by ADB SAFEGATE, warranty is limited to that extended by the original manufacturer. This is ADB SAFEGATE's sole guarantee and warranty with respect to the goods; there are no express warranties or warranties of fitness for any particular purpose or any implied warranties of fitness for any particular purpose or any implied warranties other than those made expressly herein. All such warranties being expressly disclaimed.

### Standard Products Guarantee

Products of ADB SAFEGATE manufacture are guaranteed against mechanical, electrical, and physical defects (excluding lamps) which may occur during proper and normal use for a period of two years from the date of ex-works delivery, and are guaranteed to be merchantable and fit for the ordinary purposes for which such products are made.



#### Note

See your sales order contract for a complete warranty description.

### FAA Certified product installed in the United States and purchased or funded with monies through the Airport Improvement Program (AIP) installations guarantee

ADB SAFEGATE L858 Airfield Guidance Signs are warranted against mechanical and physical defects in design or manufacture for a period of 2 years from date of installation, per FAA AC 150/5345-44 (applicable edition).

ADB SAFEGATE L858(L) Airfield Guidance Signs are warranted against electrical defects in design or manufacture of the LED or LED specific circuitry for a period of 4 years from date of installation, per FAA EB67 (applicable edition).

ADB SAFEGATE LED light fixtures (with the exception of obstruction lighting) are warranted against electrical defects in design or manufacture of the LED or LED specific circuitry for a period of 4 years from date of installation, per FAA EB67 (applicable edition).



## Note

See your sales order contract for a complete warranty description.

---

## Liability

---



### WARNING

Use of the equipment in ways other than described in the catalog leaflet and the manual may result in personal injury, death, or property and equipment damage. Use this equipment only as described in the manual.

---

ADB SAFEGATE cannot be held responsible for injuries or damages resulting from non-standard, unintended uses of its equipment. The equipment is designed and intended only for the purpose described in the manual. Uses not described in the manual are considered unintended uses and may result in serious personal injury, death or property damage.

Unintended uses, includes the following actions:

- Making changes to equipment that have not been recommended or described in this manual or using parts that are not genuine ADB SAFEGATE replacement parts or accessories.
- Failing to make sure that auxiliary equipment complies with approval agency requirements, local codes, and all applicable safety standards if not in contradiction with the general rules.
- Using materials or auxiliary equipment that are inappropriate or incompatible with your ADB SAFEGATE equipment.
- Allowing unskilled personnel to perform any task on or with the equipment.

## © ADB SAFEGATE BV

This manual or parts thereof may not be reproduced, stored in a retrieval system, or transmitted, in any form or by any means, electronic, mechanical, photocopying, recording, nor otherwise, without ADB SAFEGATE BV's prior written consent.

This manual could contain technical inaccuracies or typographical errors. ADB SAFEGATE BV reserves the right to revise this manual from time to time in the contents thereof without obligation of ADB SAFEGATE BV to notify any person of such revision or change. Details and values given in this manual are average values and have been compiled with care. They are not binding, however, and ADB SAFEGATE BV disclaims any liability for damages or detriments suffered as a result of reliance on the information given herein or the use of products, processes or equipment to which this manual refers. No warranty is made that the use of the information or of the products, processes or equipment to which this manual refers will not infringe any third party's patents or rights. The information given does not release the buyer from making their own experiments and tests.

# TABLE OF CONTENTS

<b>1.0 Introduction .....</b>	<b>1</b>
1.1 Compliance with Standards .....	1
1.2 Uses .....	1
1.3 HV Power Supply .....	2
<b>2.0 Parts .....</b>	<b>3</b>
2.1 Primary and Secondary Panel Assembly Part Numbers .....	3
2.2 L-849A/C/E Panel Assemblies Parts List .....	6
2.3 Complete REIL Assembly Parts List .....	13
2.3.1 L-849 Kit (Standard Mounting Configuration, Single and Dual Leg) Parts List .....	13
2.3.2 L-849 Kit (Single Leg Top Mounting Optical Lamp) Parts List .....	14
2.3.3 Head Mounted on Extension (Single and Dual Leg) Kit Parts List .....	15
2.3.4 L-849 Kit (Single Leg with Head Mounted on Top of Cabinet) Parts List .....	17
2.4 Head Assembly Parts List .....	18
2.5 Baffle Retrofit Kit Parts List .....	19
2.6 Recommended Spare Parts .....	20
2.7 Possible Spares .....	22
<b>A.0 SUPPORT .....</b>	<b>23</b>
A.1 ADB SAFEGATE Website .....	23
A.2 Recycling .....	23
A.2.1 Local Authority Recycling .....	23
A.2.2 ADB SAFEGATE Recycling .....	24



## List of Figures

Figure 1: REIL .....	1
Figure 2: Primary or Secondary Panel Assy NO. ....	4
Figure 3: REIL Side View using Top Mount Kit .....	5
Figure 4: L-849E Panel Assembly Primary (1 of 2) .....	9
Figure 5: L-849E Panel Assembly Primary (2 of 2) .....	10
Figure 6: L-849A Panel Assembly Secondary (1 of 2) .....	11
Figure 7: L-849A Panel Assembly Secondary (2 of 2) .....	12
Figure 8: REIL Complete Assembly (Single Leg, Standard Mounting Configuration) .....	14
Figure 9: L-849 REIL Single Leg Top Mounting Optical Lamp Kit .....	15
Figure 10: L-849 Kit (Dual Leg /Head Mounted on Extension) .....	16
Figure 11: L-849 Kit (Single Leg with Head Mounted on Top of Cabinet) .....	18
Figure 12: REIL Head Assembly .....	19
Figure 13: Power Adapters PA2 (obsolete) and PA4 .....	21





# List of Tables

Table 1: Optical Assembly Styles ..... 1

Table 2: Intensity Level Capacitors for REIL Style E Only ..... 2

Table 3: L-849A Primary and Secondary Panel Assembly Part Numbers ..... 3

Table 4: L-849C Primary and Secondary Panel Assembly Part Numbers ..... 3

Table 5: L-849E Primary and Secondary Panel Assembly Part Numbers ..... 3

Table 6: Parts ..... 22



# 1.0 Introduction

See [Figure 1](#) . This section describes the ADB Safegate REIL Style A/C/E Runway End Identifier Lights. The REIL consists of two unidirectional light units, one on each side of the runway. These light units flash twice a second to provide a visual indication to pilots of the runway threshold during an approach for landing.

## 1.1 Compliance with Standards

**FAA** : REIL Style A, C and E, AC 150/5345-51 (Current Edition) ETL Certified

**ICAO**: Annex 14, Vol. 1, para. 5.3.8 .

## 1.2 Uses

Provides a visual indication to pilots of the runway threshold during an approach.

Voltage-powered REIL (ETL Certified)

Current-powered REIL

**Style A** – High-Intensity/Single-Step

**Style C** – Low-Intensity/Single-Step

**Style E** – High-, Medium-, and Low-Intensity/Three-Step

The REIL Style C is recommended when maximum single-step flash-tube lamp life is desired.

The REIL Style E is recommended for intermittent use, such as when activated by radio control.

**Figure 1: REIL**



Refer to [Table 1](#) for the three REIL optical assembly styles.

**Table 1: Optical Assembly Styles**

REIL Version	Style	Optical Assembly Style
L-849A	A	Unidirectional, high intensity
L-849C	C	Unidirectional, low intensity
L-849E	E	Unidirectional, low, medium, high intensity

## 1.3 HV Power Supply

Capacitor C1 reacts with the magnetics of ferro resonant transformer T1 to produce an output high voltage (1500 V ac) that is impervious to input voltage variations.

The AC high voltage output from the ferro resonant circuit is taken to a full-wave bridge rectifier consisting of diodes D1 to D4. The output of the bridge rectifier is approximately 2000 Vdc.

For the REIL Style A or C, the 2000 Vdc charges up flash capacitor C2 through current-limiting resistor R12. For the L-849A, the value of the flash capacitor is 27  $\mu$ F and for the L-849C it is 2.5  $\mu$ F.

For the REIL Style E, the 2000 Vdc charges up flash capacitor C4 through current-limiting resistor R14 and flash capacitors C3 and C2 (through R14). Capacitor C4 is always connected in the circuit but C2 and C3 are switched in or out by relays K1 and K2 in the HV power supply. Refer to [Table 2](#) to determine which capacitors are charged up in each intensity level for REIL Style E. When relay K1 or K2 is energized, neon lights DS1 or DS2 respectively are illuminated, resulting in a visual indication of the intensity command selected. The state of DS1 and DS2 is also given in [Table 2](#).

**Table 2: Intensity Level Capacitors for REIL Style E Only**

Intensity	HV Power Supply Relay Energized	Flash Capacitor(s) in Circuit	Neon Light(s) Illuminated
Low	None	C4	None
Medium	K2	C3 and C4	DS2
High	K1 and K2	C2, C3, and C4	DS1 and DS2

When power is turned off, resistors R1 to R10 discharge capacitor C2 (C4 for REIL Style E) to 50 volts in less than 30 seconds. As an additional safety feature, bleeder resistor R11 (R13 for L-849E) is permanently connected across the terminals of C2 (C4 for REIL Style E) and discharges it to 50 volts in less than 5 minutes when power is turned off. For L-849E only, bleeder resistors R11 to R12 discharge capacitors C2 and C3, respectively to 50 V in less than 30 seconds. Resistors R1 to R10 form a voltage divider network that inputs approximately +300 Vdc into the trigger interface PCB at TB3-1 to TB3-3.

## 2.0 Parts

To order parts, call ADB Safegate Customer Service or your local representative.

Use this five-column parts list, and the accompanying illustration, to describe and locate parts correctly.

### 2.1 Primary and Secondary Panel Assembly Part Numbers

Refer to [Table 3](#) for the primary and secondary panel assembly part numbers for the L-849A Runway End Identifier Light (REIL). Refer to [Table 4](#) for the primary and secondary panel assembly part numbers for the L-849C REIL. Refer to [Table 5](#) for the primary and secondary panel assembly part numbers for the L-849E REIL.

**Table 3: L-849A Primary and Secondary Panel Assembly Part Numbers**

Final Assembly	Primary Panel Assembly	Secondary Panel Assembly
44A1161-11	44D1117-01	44D1117-2
44A1161-12	44D1117-03	44D1117-4
44A1161-41	44D1117-13	44D1117-2
44A1161-42	44D1117-14	44D1117-4
44A1161-13	44D1117-21	44D1117-22
44A1161-14	44D1117-23	44D1117-24
44A1161-43	44D1117-33	44D1117-22
44A1161-44	44D1117-34	44D1117-24

**Table 4: L-849C Primary and Secondary Panel Assembly Part Numbers**

Final Assembly	Primary Panel Assembly	Secondary Panel Assembly
44A1161-21	44D1117-05	44D1117-6
44A1161-22	44D1117-07	44D1117-8
44A1161-51	44D1117-15	44D1117-6
44A1161-52	44D1117-16	44D1117-8
44A1161-23	44D1117-25	44D1117-26
44A1161-24	44D1117-27	44D1117-28
44A1161-53	44D1117-35	44D1117-26
44A1161-54	44D1117-36	44D1117-28

**Table 5: L-849E Primary and Secondary Panel Assembly Part Numbers**

Final Assembly	Primary Panel Assembly	Secondary Panel Assembly
44A1161-31	44D1117-09	44D1117-10
44A1161-32	44D1117-11	44D1117-12
44A1161-61	44D1117-17	44D1117-10
44A1161-62	44D1117-18	44D1117-12
44A1161-71	44D1117-19	44D1117-10
44A1161-72	44D1117-20	44D1117-12
44A1161-35	44D1117-29	44D1117-30
44A1161-36	44D1117-31	44D1117-32
44A1161-65	44D1117-37	44D1117-30

**Table 5: L-849E Primary and Secondary Panel Assembly Part Numbers (continued)**

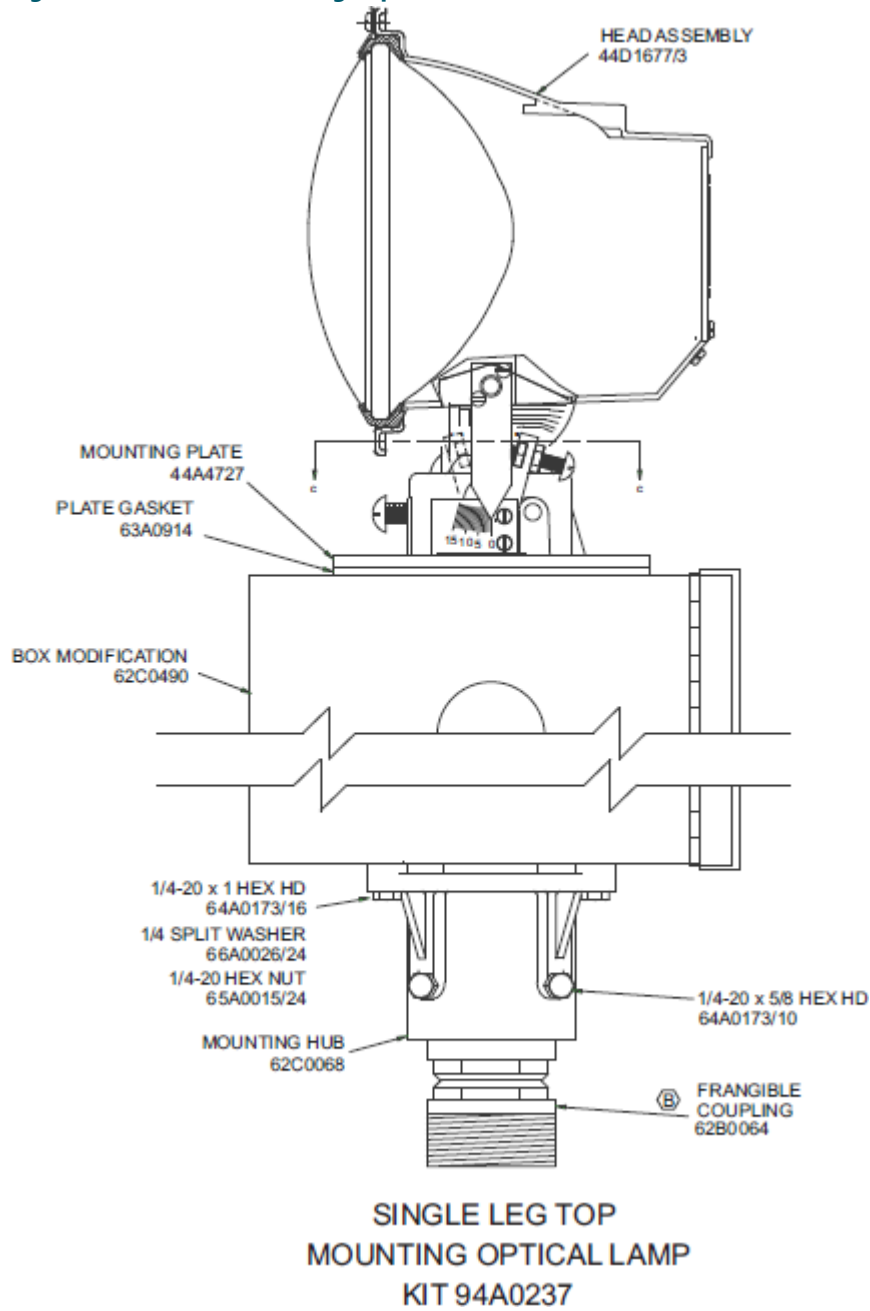
Final Assembly	Primary Panel Assembly	Secondary Panel Assembly
44A1161-66	44D1117-38	44D1117-32
44A1161-75	44D1117-39	44D1117-30
44A1161-76	44D1117-40	44D1117-32

**Figure 2: Primary or Secondary Panel Assy NO.**

Primary or Secondary Panel Assy NO.

WITHOUT POWER ADAPTER INPUT	W/O CURRENT SENSE	HIGH INTENSITY	STYLE	Primary or Secondary	ITEM NO.	PANEL ASSY	DESCRIPTION	QTY	
			A	44D1117-1	3	44D1158-11	Primary PANEL ASSY	1	
				WHOUR METER	44D1117-2	3	44D1158-21	Secondary PANEL ASSY	1
				44D1117-3	3	44D1158-12	Primary PANEL ASSY	1	
		C	WHOUR METER	44D1117-4	3	44D1158-22	Secondary PANEL ASSY	1	
			44D1117-5	3	44D1159-11	Primary PANEL ASSY	1		
			WHOUR METER	44D1117-6	3	44D1159-21	Secondary PANEL ASSY	1	
		LOW INTENSITY	WHOUR METER	44D1117-7	3	44D1159-12	Primary PANEL ASSY	1	
			44D1117-8	3	44D1159-22	Secondary PANEL ASSY	1		
			E	44D1117-9	3	44D1160-11	Primary PANEL ASSY	1	
				WHOUR METER	44D1117-10	3	44D1160-21	Secondary PANEL ASSY	1
		3 STEP INTENSITY LOW-MED-HIGH	WHOUR METER	44D1117-11	3	44D1160-12	Primary PANEL ASSY	1	
	44D1117-12		3	44D1160-22	Secondary PANEL ASSY	1			
	B A		44D1117-13	3	44D1158-31	Primary PANEL ASSY	1		
			WHOUR METER	44D1117-14	3	44D1158-32	Primary PANEL ASSY	1	
	W/O CURRENT SENSE	HIGH INTENSITY	B C	44D1117-15	3	44D1159-31	Primary PANEL ASSY	1	
				WHOUR METER	44D1117-16	3	44D1159-32	Primary PANEL ASSY	1
			B	44D1117-17	3	44D1160-31	Primary PANEL ASSY	1	
				WHOUR METER	44D1117-18	3	44D1160-32	Primary PANEL ASSY	1
		LOW INTENSITY	E	44D1117-19	3	44D1160-41	Primary PANEL ASSY	1	
				WHOUR METER	44D1117-20	3	44D1160-42	Primary PANEL ASSY	1
			3 STEP INTENSITY LOW-MED-HIGH	44D1117-21	3	44D1158-13	Primary PANEL ASSY	1	
				WHOUR METER	44D1117-22	3	44D1158-23	Secondary PANEL ASSY	1
		44D1117-23		3	44D1158-14	Primary PANEL ASSY	1		
WHOUR METER		44D1117-24		3	44D1158-24	Secondary PANEL ASSY	1		
WITH POWER ADAPTER INPUT		HIGH INTENSITY	C	44D1117-25	3	44D1159-13	Primary PANEL ASSY	1	
				WHOUR METER	44D1117-26	3	44D1159-23	Secondary PANEL ASSY	1
	WHOUR METER		44D1117-27	3	44D1159-14	Primary PANEL ASSY	1		
			44D1117-28	3	44D1159-24	Secondary PANEL ASSY	1		
	LOW INTENSITY	E	44D1117-29	3	44D1160-13	Primary PANEL ASSY	1		
			WHOUR METER	44D1117-30	3	44D1160-23	Secondary PANEL ASSY	1	
		WHOUR METER	44D1117-31	3	44D1160-14	Primary PANEL ASSY	1		
			44D1117-32	3	44D1160-24	Secondary PANEL ASSY	1		
	3 STEP INTENSITY LOW-MED-HIGH	A	44D1117-33	3	44D1158-33	Primary PANEL ASSY	1		
			WHOUR METER	44D1117-34	3	44D1158-34	Primary PANEL ASSY	1	
		C	44D1117-35	3	44D1159-33	Primary PANEL ASSY	1		
			WHOUR METER	44D1117-36	3	44D1159-34	Primary PANEL ASSY	1	
1 STEP, CURRENT SENSE 1 STEP, CURRENT SENSE 1 STEP, CURRENT SENSE 1 STEP, CURRENT SENSE 1 STEP CURRENT SENSE 1 STEP CURRENT SENSE 3 STEP CURRENT SENSE 3 STEP CURRENT SENSE	HIGH INTENSITY	WHOUR METER	44D1117-37	3	44D1160-33	Primary PANEL ASSY	1		
			44D1117-38	3	44D1160-34	Primary PANEL ASSY	1		
		E	44D1117-39	3	44D1160-43	Primary PANEL ASSY	1		
			WHOUR METER	44D1117-40	3	44D1160-44	Primary PANEL ASSY	1	

Figure 3: REIL Side View using Top Mount Kit



## 2.2 L-849A/C/E Panel Assemblies Parts List

See [Figure 4](#) thru [Figure 7](#).

### Note

[Figure 5](#) shows only the L-849E REIL Primary. [Figure 7](#) shows only the L-849A REIL Secondary. The L-849C REIL will have different part locations.

Item	Description	Part Number	Quantity	Note
1	Capacitor 0.47 $\mu$ F, 2000 Vac, L-849A/E	20A0013	See note.	A
2	Bracket, capacitor, L-849A/C/E	61B0145-68	See note.	B
3	Relay, DPDT, coil, 120 Vac, L-849E only			
	Relay, with power adapter	53A0257	See note.	B, F
	Relay, without power adapter	53A0182	See note.	B
4	Primary oscillator PCB assembly (Primary only)			
	Primary oscillator PCB assembly, L-849A/C	44B1156	1	D
	Primary oscillator PCB assembly, L-849E	44B1157	1	D
5	Resistor, 10 $\Omega$ , 6.5 W, L-849A/C/E	15A0199	See note.	A
6	Component mounting block, L-849A/C/E	72A0011	See note.	A
7	Current sensing PCB, L-849E, Primary only			
	L-849 E	44D1988/2100	1	
	L-849 A/C	44D1988/1100	1	
8	Rotary switch, L-849E, Primary only	46A0023	1	
9	Hour-meter, L-849A/C/E	52A0100	See note.	A
10	Input module			
	Input module, L-849A/C	44B1162	See note.	A
	Input module, L-849E	44B1163	See note.	A
11	Neon lamp, L-849E, Primary only	48A0048-5	See note.	B
12	Switch, L-849A/C/E	45A0267	See note.	A
13	Fuse, 4A, Slo-Blo, L-849A/C/E	47A0078	See note.	B
14	Relay, 110 Vdc, 15 A, DPDT, with power adapter, L-849A/C/E	53A0261	See note.	B
15	Fuse holder, L-849A/C/E	49A0040	See note.	C
16	Fuse, 1.5 A, Slo-Blo, L-849E, Primary only	47A0027	1	



Item	Description	Part Number	Quantity	Note
17	Socket, relay, L-849A/C/E	49A0075	See note.	A
18	Relay, 120 Vac, DPDT, L-849A/C/E	53A0260	See note.	A
19	Spring, relay retaining, L-849A/C/E	49A0076	See note.	B
20	Varistor			
	Varistor, L-849A/C/E (60 Hz)	32A0011	See note.	B
	Varistor, L-849A/C/E (50 Hz)	32A0032	See note.	B
21	Ground lug, L-849A/C/E	72A0010	See note.	A
22	Terminal block, L-849E	72A0066	See note.	C
23	Terminal block end piece, L-849E	72A0067	See note.	A
24	Trigger interface PCB assembly, L-849A/C/E	44B1105	See note.	A
25	Standoff, brass, L-849A/C/E	66A0068-6	See note.	A
26	Standoff, ceramic, L-849A/C/E	66A0067-20	See note.	A
27	Resistor mounting block assembly, L-849A/C/E	44B1165	See note.	A
28	Resistor 1 k $\Omega$ , 100 W, L-849A/C/E	1000C1001W5A	See note.	A
29	Bracket, resistor, L-849A	61A0194	See note.	A
30	Lightning arrestor	32A0011	See note.	A
31	Component mounting block assembly, L-849A/C/E	44B1164	See note.	A
32	Terminal block, L-849A/C/E	72A0047-6	See note.	E
33	Transformer			
	Transformer, L-849A/C/E (60 Hz)	35C0140	See note.	A
	Transformer, L-849A/C/E (50 Hz)	35A0294	See note.	A
34	Bracket, capacitor			
	Bracket, capacitor, L-849A/C	60B0539	See note.	B
	Bracket, capacitor, L-849E	60B0538	See note.	B
35	Capacitor			
	Capacitor, 23 $\mu$ F, 2500 Vdc, L-849E, Primary	20A0020	See note.	A
	Capacitor 27 $\mu$ F, 2500 Vdc, L-849A, Secondary	20A0021	See note.	A
36	Resistor 22 M $\Omega$ , 1/2 W, L-849E	R500M2205C54	See note.	B

Item	Description	Part Number	Quantity	Note
37	Capacitor 2.75 $\mu$ F, 2500 Vdc, L-849E	20A0024	See note.	B
38	Bracket, capacitor, L-849E	61B0145-76	See note.	B
39	Bracket, capacitor, L-849E	61B0145-50	See note.	B
40	Capacitor, 1.25 $\mu$ F, 2500			
	Capacitor, 1.25 $\mu$ F, 2500, L-849E	20A0023	See note.	A
	Capacitor, 1.25 $\mu$ F, 2500, L-849A/C	20A0022	See note.	A
41	Resistor			
	Resistor, 3.3 $\Omega$ , 2 W, L-849E	2R00C3304M55	See note.	A
	Resistor, 2.7 M $\Omega$ , 2 W, L-849A	2R00C2704M55	See note.	A
NS	Power Transformer, L-849A/C/E (50 Hz), Primary only	35A0474	1	

NOTE A: Primary has quantity of 1; secondary has quantity of 1. NOTE B: Primary has quantity of 2; secondary has quantity of 2.

NOTE B: Primary has quantity of 2; secondary has quantity of 2.

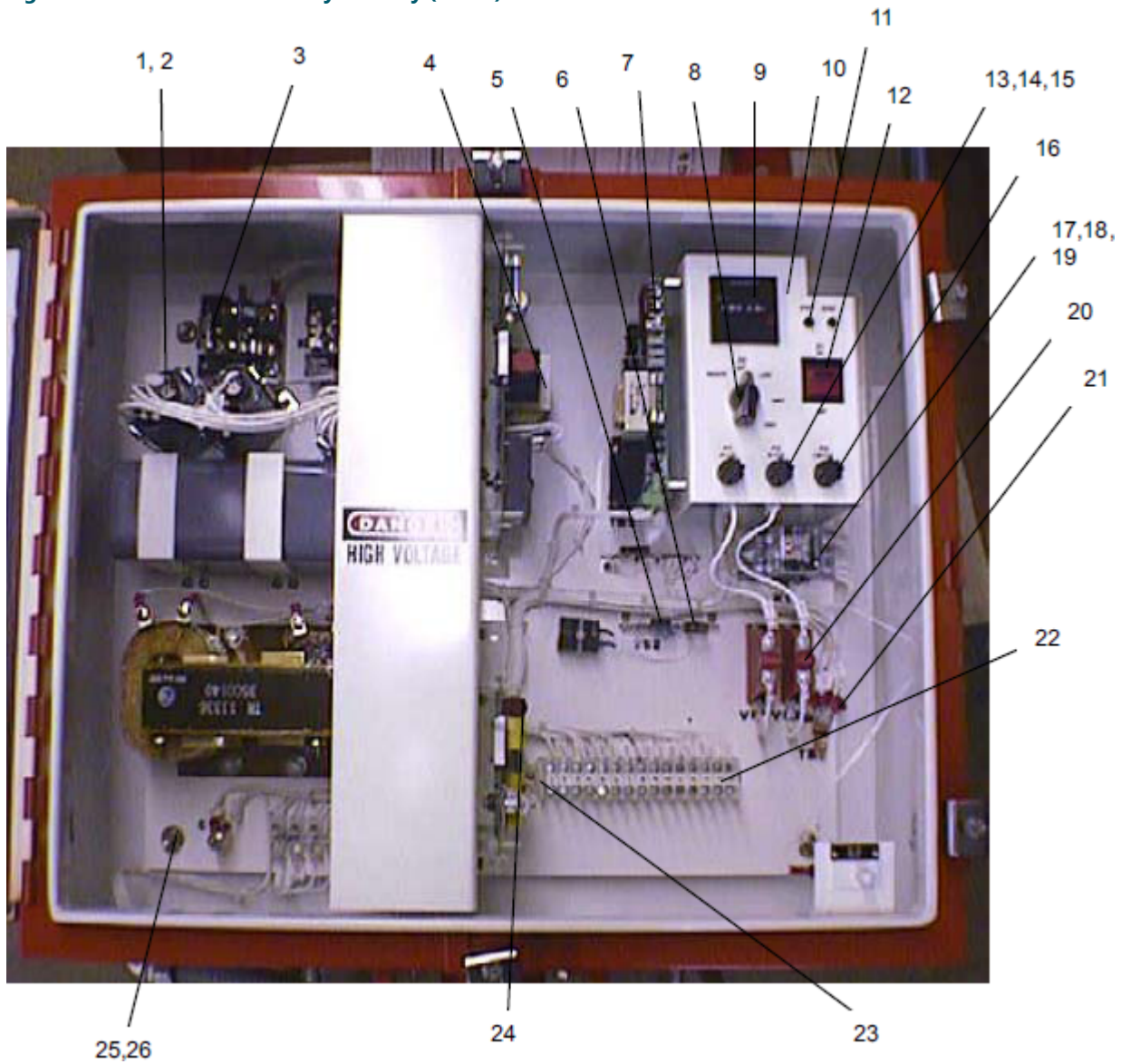
NOTE C: On L-849A/C, Primary has quantity of 2; secondary has quantity of 2. On L-849E, Primary has quantity of 3; secondary has a quantity of 2. NOTE D: See Schematic 43B0637 at end of Section 8

NOTE D: See Schematic 43B0637 at end of Section 8

NOTE E: On L-849A/C, Primary has quantity of 18; secondary has quantity of 12. On L-849E, Primary has quantity of 6; secondary has quantity of 6.

NOTE F: To replace obsolete relay Part Number 53A0257, order DC relay kit Part Number 94A0602. This kit includes two 53A0182 relays to replace the 53A0257 relays and a new 44A7196 PCB to replace the existing 44B1781 PCB.

Figure 4: L-849E Panel Assembly Primary (1 of 2)



**Figure 5: L-849E Panel Assembly Primary (2 of 2)**

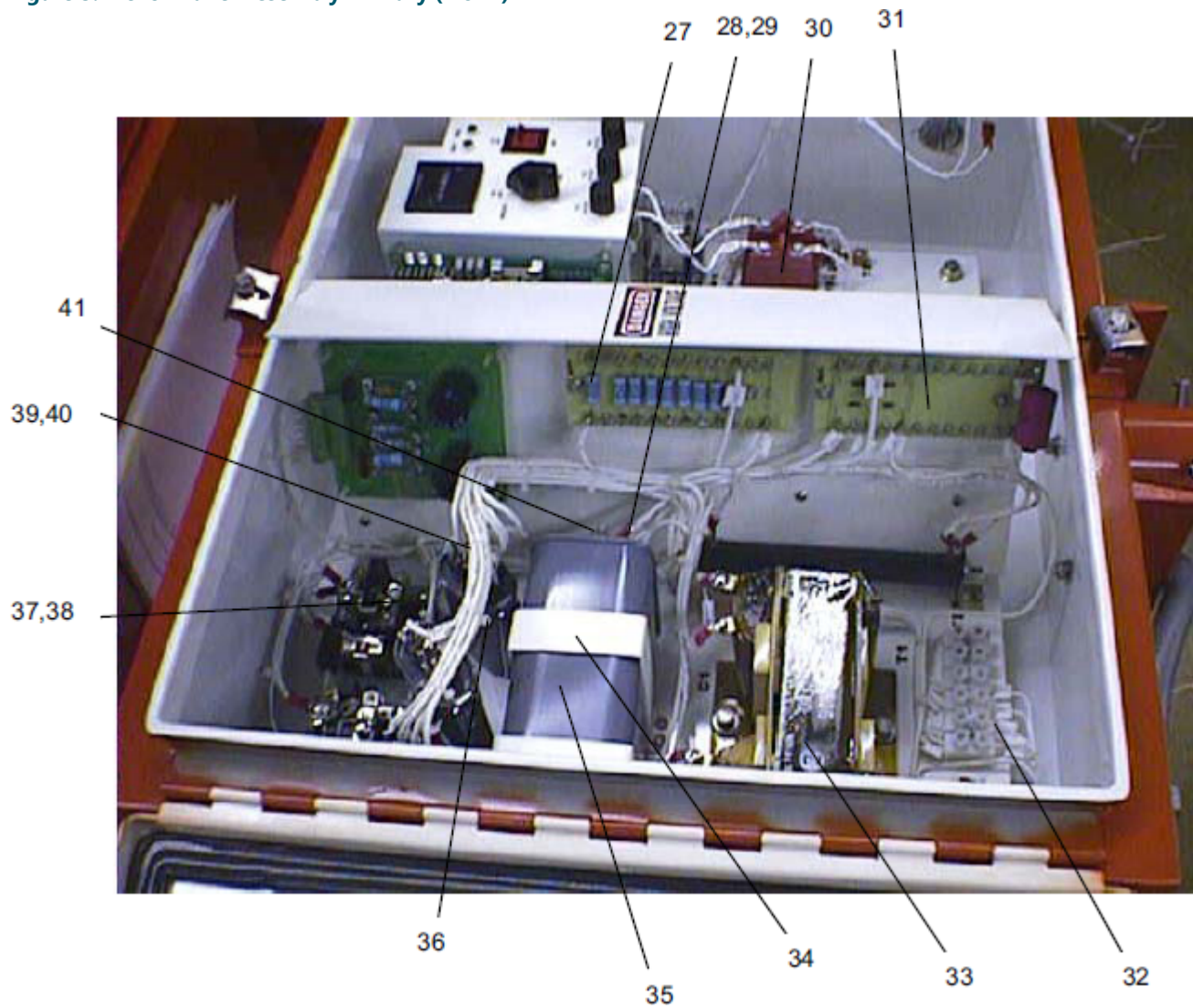
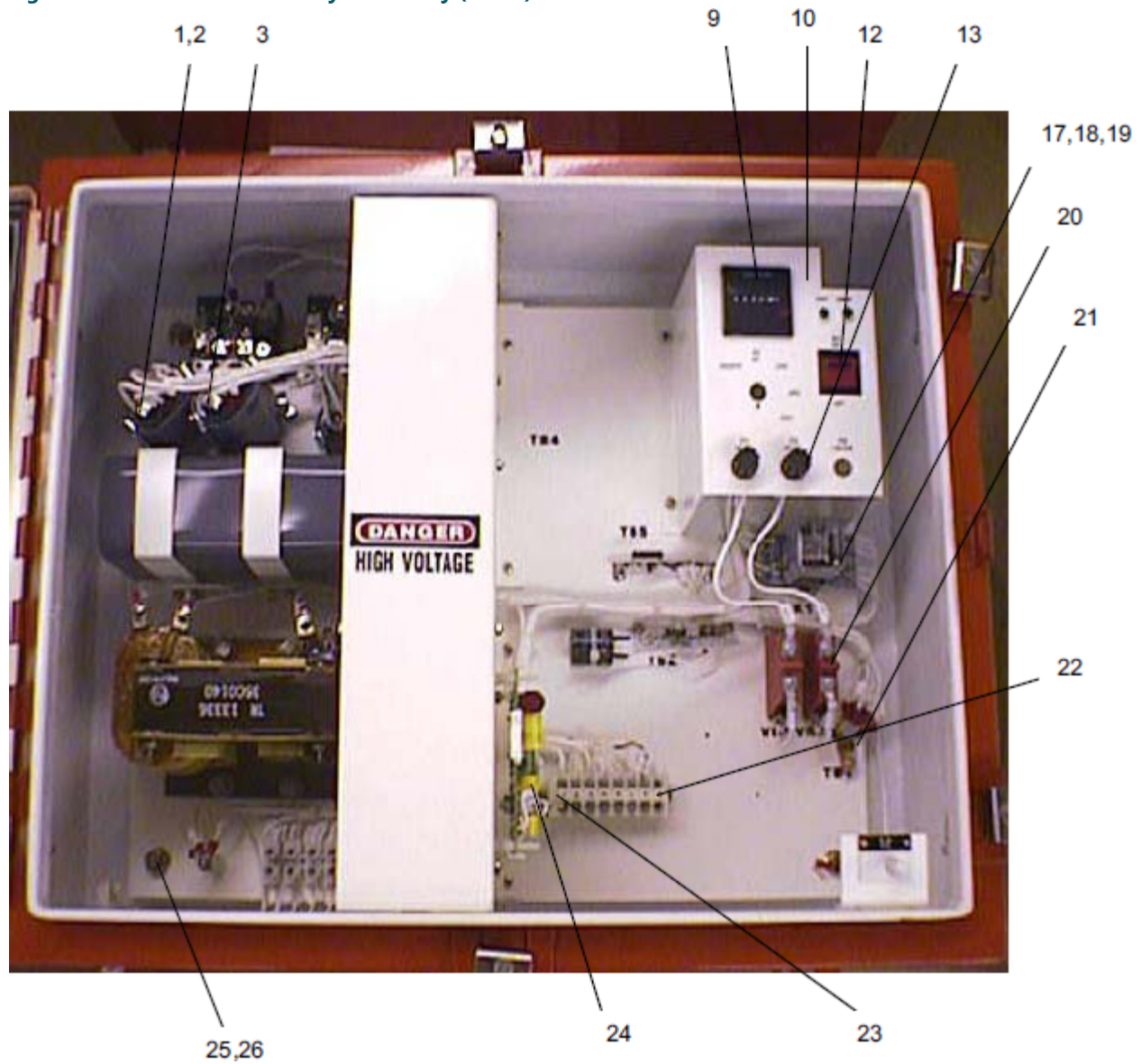
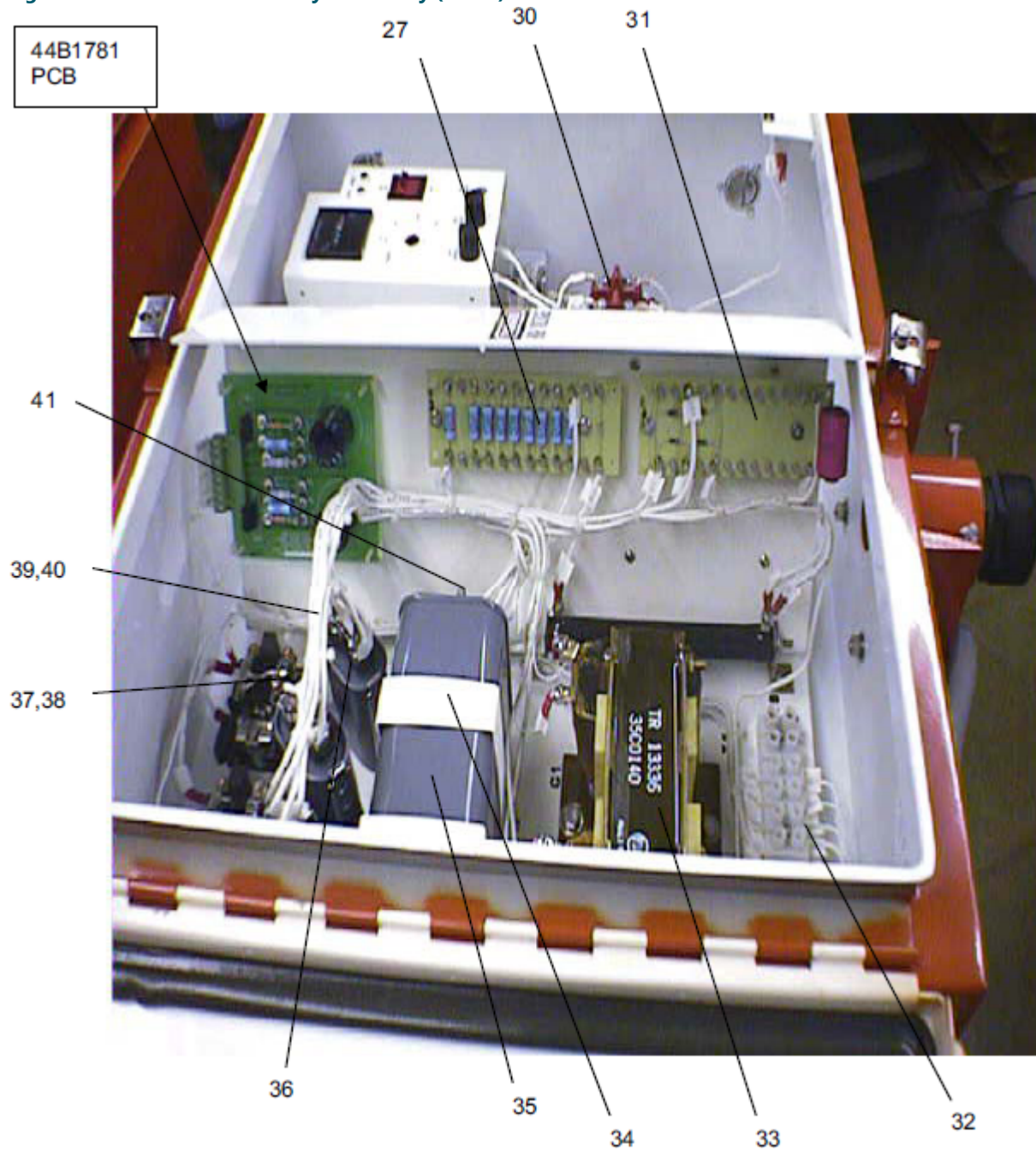


Figure 6: L-849A Panel Assembly Secondary (1 of 2)





**Figure 7: L-849A Panel Assembly Secondary (2 of 2)**



## 2.3 Complete REIL Assembly Parts List


This subsection provides parts lists for L-849 REIL final assemblies for all options.

### 2.3.1 L-849 Kit (Standard Mounting Configuration, Single and Dual Leg) Parts List

This subsection provides parts lists for L-849 REIL final assemblies for all options.

See [Figure 8](#) . The L-849 kit part number for the standard mounting configuration single leg is 94A0238. The L-849 kit part number for the standard mounting configuration dual leg is

94A0205. The standard mounting configuration is FAA approved.

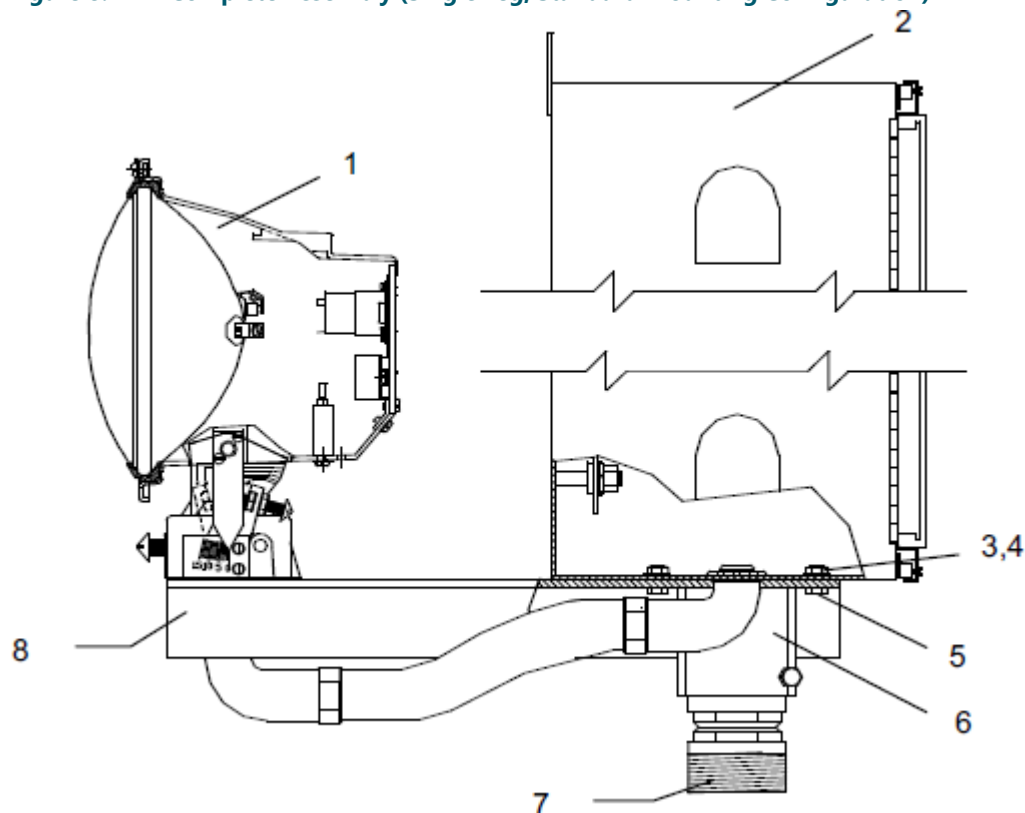
 **Note** [Figure 8](#) shows the single leg standard mounting configuration. [Figure 8](#) also applies to the dual leg standard mounting configuration.

Item	Description	Part Number	Quantity	Note
1	Head assembly	44D1677-3	1	
2	Control cabinet	62C0490	1	
3	Nut, hex, 1/4–20	65A0015-24	4	
4	¼ split washer	66A0026-24	4	
5	Screw, hex head, 1/4–20 x 1	64A0173-16	4	
6	Frangible coupling	62B0064	1	A
7	Screw, hex head, 1/4–20 x 5/8	64A0173-10	2	

Item	Description	Part Number	Quantity	Note
8	Leg assembly			
	Single leg (standard)	44A4751	1	
	Dual leg	44C1762	1	

NOTE A: The dual leg has 2 frangible couplings.

**Figure 8: REIL Complete Assembly (Single Leg, Standard Mounting Configuration)**



### 2.3.2 L-849 Kit (Single Leg Top Mounting Optical Lamp) Parts List

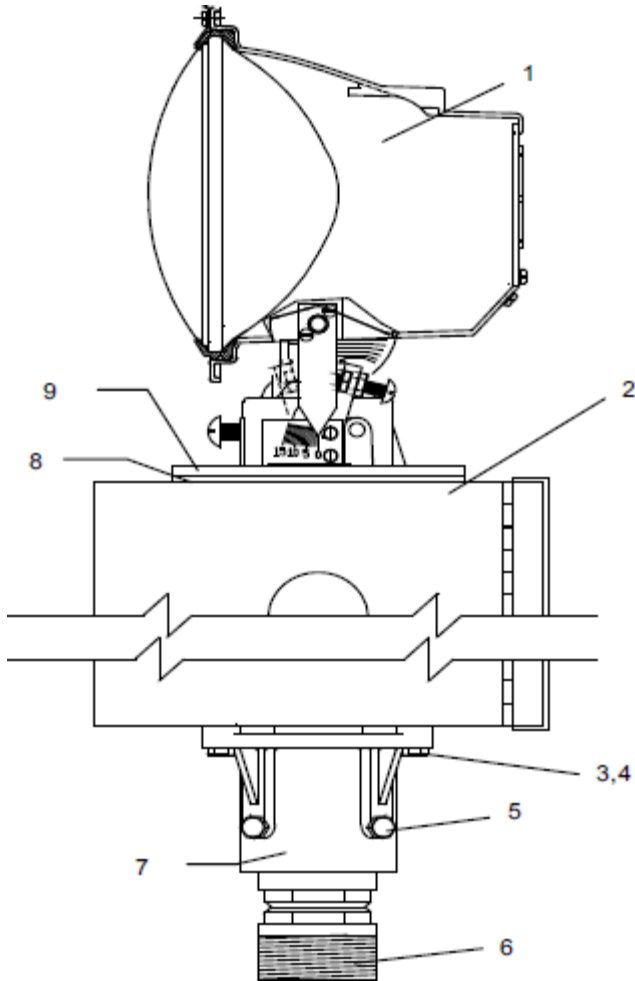
See [Figure 9](#) . The single leg top mounting optical lamp kit part number is 94A0237. This kit is not FAA approved.

Item	Description	Part Number	Quantity	Note
1	Head assembly	44D1677-3	1	
2	Control cabinet	62C0490	1	
3	Screw, hex head, 1/4-20 x 1	64A0173-16	4	
4	1/4 split washer	66A0026-24	4	
5	Screw, hex head, 1/4-20 x 1	64A0173-12	4	
6	Frangible coupling	62B0064	1	



Item	Description	Part Number	Quantity	Note
7	Plate gasket	63A0914	1	
8	Mounting plate	44A4727	1	
9	Mounting hub	62C0068	1	

**Figure 9: L-849 REIL Single Leg Top Mounting Optical Lamp Kit**



### 2.3.3 Head Mounted on Extension (Single and Dual Leg) Kit Parts List

See [Figure 10](#) . The kit part number for the single leg with head mounted on extension is 94A0233. The kit part number for the dual leg with head mounted on extension is 94A0236. This kit is not FAA approved.



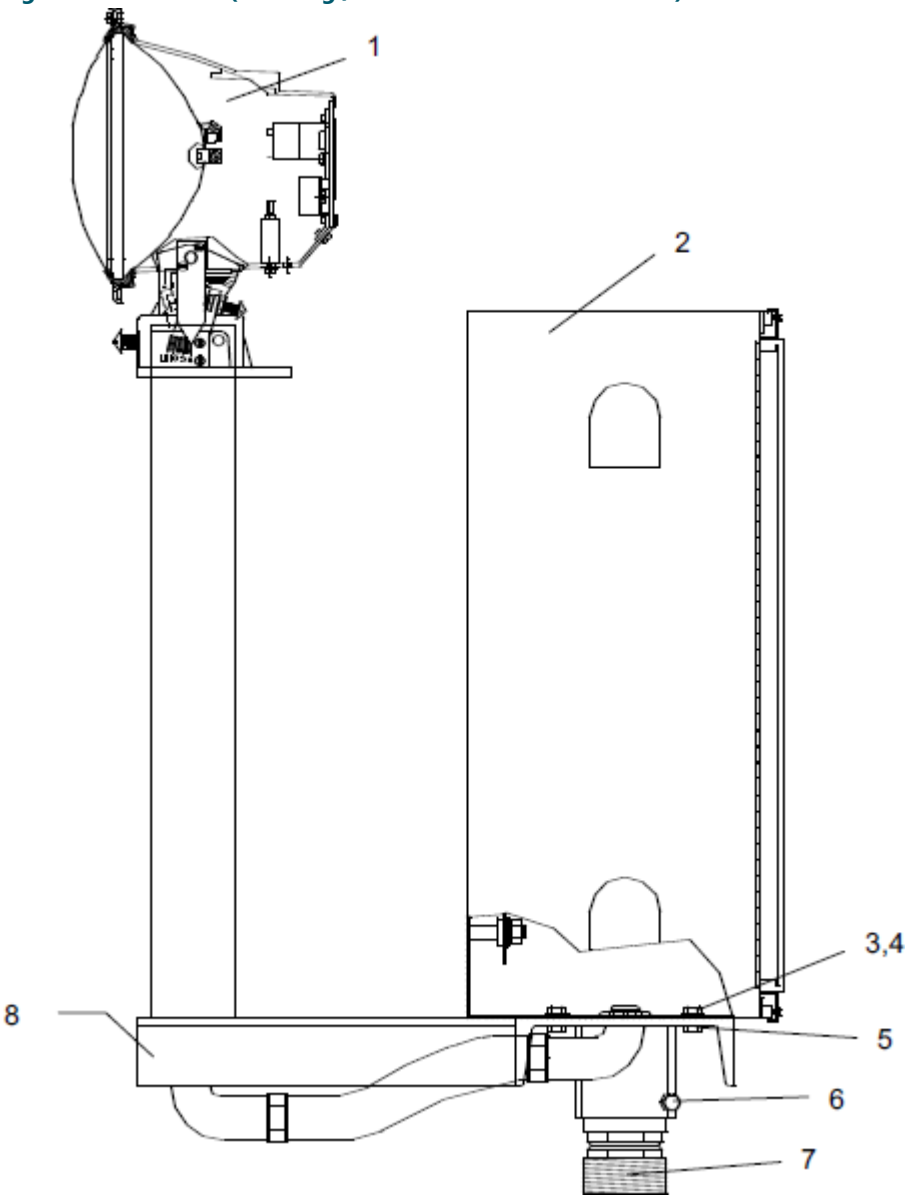
#### Note

[Figure 10](#) shows the dual-leg mounting option. [Figure 9](#) also applies to the single leg mounting option.

Item	Description	Part Number	Quantity	Note
1	Head assembly	44D1677-3	1	
2	Control cabinet	62C0490	1	
3	Nut, hex, 1/4–20	65A0015-24	4	
4	¼ split washer	66A0026-24	4	
5	Screw, hex head, 1/4–20 x 1	64A0173-16	4	

Item	Description	Part Number	Quantity	Note
6	Screw, hex head, 1/4-20 x 1	64A0173-12	4	
7	Frangible coupling	62B0064	1	
8	Post weldment assembly		1	
	Single leg	44A4751		
	Dual leg	44A4756		

Figure 10: L-849 Kit (Dual Leg /Head Mounted on Extension)

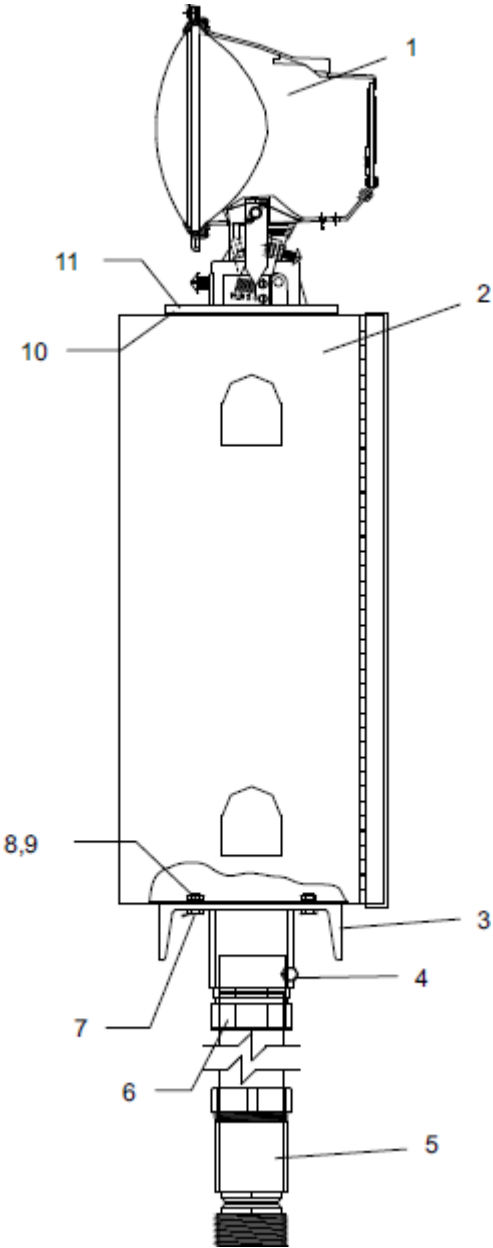


### 2.3.4 L-849 Kit (Single Leg with Head Mounted on Top of Cabinet) Parts List

See [Figure 11](#) . The kit part number for the single leg with head mounted on top of the cabinet is 94A0239. This kit is not FAA approved.

Item	Description	Part Number	Quantity	Note
1	Head assembly	44D1677-3	1	
2	Control cabinet	62C0490	1	
3	Base weldment	44A4757	1	
4	Screw, hex head, 1/4–20 x 1	64A0173-12	4	
5	Frangible coupling	44B0180	1	
6	Compression coupling	77A0009	1	
7	Screw, hex head, 1/4–20 x 1	64A0173-16	4	
8	Nut, hex, 1/4–20	65A0015-24	4	
9	¼ split washer	66A0026-24	4	
10	Plate gasket	63A0914	1	
11	Mounting plate	44A4727	1	

Figure 11: L-849 Kit (Single Leg with Head Mounted on Top of Cabinet)



## 2.4 Head Assembly Parts List

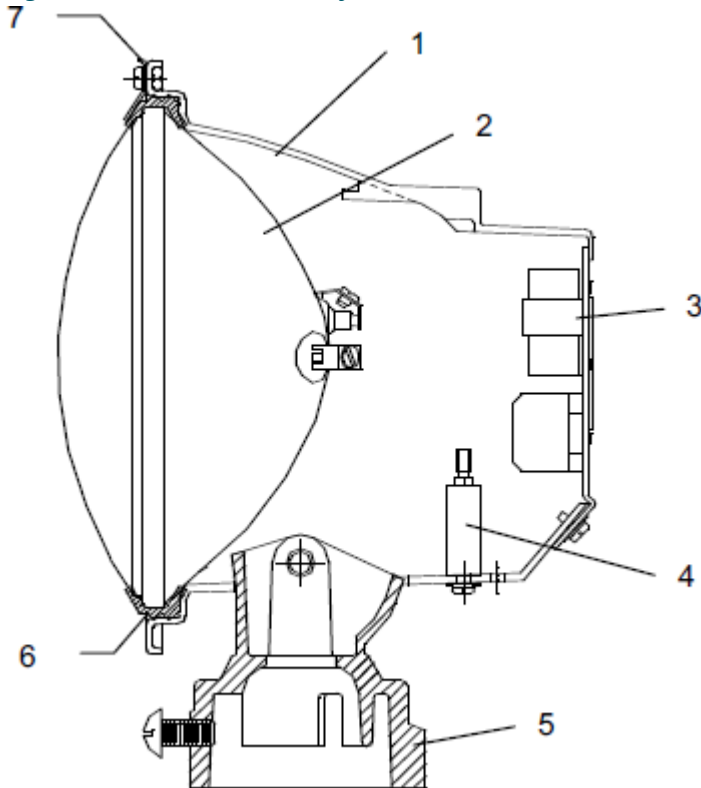
See [Figure 12](#) . The REIL head assembly part number is 44D1677-3.

Item	Description	Part Number	Quantity	Note
1	Multi-purpose head	88D0518	1	
2	Flashing lamp	48B0022	1	
3	Trigger transformer assembly		1	
	Trigger transformer assembly without mounting backplate	44B1780-4		

Item	Description	Part Number	Quantity	Note
	Trigger transformer assembly with mounting backplate	44B1780-2	1	
4	HV standoff	66A0067-20	1	
5	Slip fitter, 1-1/2 tower	62D0524/1P	1	
6	Lamp gasket	63C0532	1	
7	Lamp clip	60B0900	3	
NS	Interlock switch	45A0297	1	

NS: Not Shown

**Figure 12: REIL Head Assembly**



## 2.5 Baffle Retrofit Kit Parts List

For Baffle Retrofit Kit parts, refer to *Installing Baffles* in the *Installation* section.

## 2.6 Recommended Spare Parts

See [Figure 4](#) thru [Figure 7](#) . Refer below for recommended spare parts.

Item	Description	Part Number	Quantity	Note
3	Relay, DPDT, coil, 120 Vac, L-849E only			
	Relay, with power adapter	53A0257	See note.	A, D
	Relay, without power adapter	53A0182	See note.	A
4	Master oscillator PCB assembly		1	C
	Master oscillator PCB assembly, L-849A/C	44B1156		
	Master oscillator PCB assembly, L-849E	44B1157		
7	Current sensing PCB, three-step, L-849E, Primary only	44D1988-2100	1	
10	Input module			
	Input module, L-849A/C	44B1162S	1	
	Input module, L-849E	44B1163S	1	
13	Fuse, 4A, Slo-Blo	47A0078	2	
14	Relay, 110 Vdc, 15 A, DPDT (for REIL with power adapter)	53A0261		
16	Fuse, 1.5 A, Slo-Blo, L-849E, Primary only	47A0027	1	
18	Relay, 120 Vac, DPDT (for REIL without power adapter option)	53A0260		
24	Trigger interface PCB assembly	44B1105	1	
27	Resistor mounting block assembly, L-849A/C/E	44B1165	See note.	B
30	Lightning arrestor	32A0011	See note.	B
31	Component mounting block assembly, L-849A/C/E	44B1164	See note.	B
NS	Trigger transformer assembly without mounting backplate	44B1780-4	1	
NS	Current sensing assembly (for REIL with 1-step sensing option)	44D1988-1100	1	

Item	Description	Part Number	Quantity	Note
NS	Flashing lamp	48B0022	1	
NS	Lamp gasket	63C0532	1	

NOTE A: Primary has quantity of 2; Secondary has quantity of 2. NOTE B: Primary has quantity of 1; Secondary has quantity of 1. NOTE C: See Schematic 43B0637 at end of Section 8.

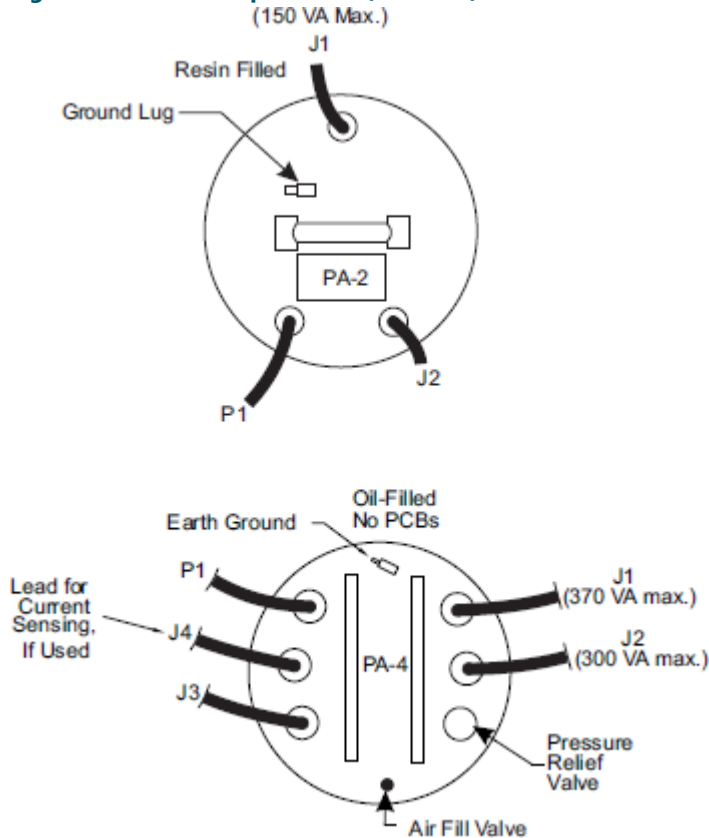
NOTE B: Primary has quantity of 1; Secondary has quantity of 1.

NOTE C: See Schematic 43B0637 at end of Section 8.

NOTE D: To replace obsolete relay Part Number 53A0257, order DC relay kit Part Number 94A0602. This kit includes two 53A0182 relays to replace the 53A0257 relays and a new 44A7196 PCB to replace the existing 44B1781 PCB.

NS: Not Shown

**Figure 13: Power Adapters PA2 (obsolete) and PA4**



See ["Wiring Schematics"](#) for the wiring diagrams.

## 2.7 Possible Spares

**Table 6: Parts**

Description	Part No.
Current sensing assembly, one-step	44D1988-1100
Current sensing assembly, three-step	44D1988-2100
Fuse, 4 A, slow blow, 125 V	47A0078
Fuse, 1.5 A, slow blow, 250 V	47A0030
High-voltage diode assembly	44B1164
Lamp gasket	63C0532
Lighting arrestor, 150 VAC	32A0011
Master oscillator PCB ass'y, L-849 Style E	44B1157
Master oscillator PCB ass'y, L-849 Style A/C	44B1156
PAR-56 xenon flash lamp	48B0022
Relay, intensity switching, DPDT, 120 VAC,	53A0182 without power adapter
Relay, intensity switching, DPDT, 110 VDC	See note
with power adapter	
Relay, input power switching, DPDT, 120 VAC 53A0260 without power adapter	
Relay, input power switching, DPDT, 110 VDC 53A0261 with power adapter	
Resistor mounting block assembly	44B1165
Trigger transformer assembly	44B1780-4
Trigger interface PCB	44B1105

### Notes

- <sup>1</sup> To replace obsolete relay Part No. 53A0257, order DC Relay Kit Part No. 94A0602. This kit includes two 53A0182 relays to replace the 53A0257 relays and a new 44A7196 PCB to replace the existing 44B1781 PCB. Both old relays and the existing 44B1781 PCB must be replaced at the same time. The relays and PCB are direct replacements; no wiring changes are needed.



## Appendix A: SUPPORT

Our experienced engineers are available for support and service at all times, 24 hour/7 days a week. They are part of a dynamic organization making sure the entire ADB SAFEGATE is committed to minimal disturbance for airport operations.

### ADB SAFEGATE Support

#### Live Technical Support - Americas

If at any time you have a question or concern about your product, just contact ADB SAFEGATE's technical service department. Trained in all areas of system issues, troubleshooting, quality control and technical assistance, our highly experienced Technical support specialists are available 24 hours a day, seven days a week to provide assistance over the phone.

**ADB SAFEGATE Americas Technical Service & Support (US & Canada): +1-800-545-4157**

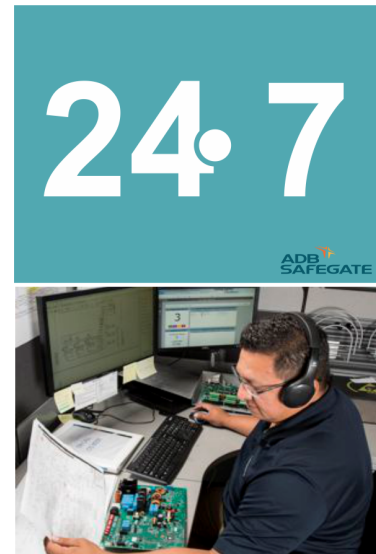
**ADB SAFEGATE Americas Technical Service & Support (International): +1-614-861-1304**

During regular business hours, you can also Chat with a Service Technician. We look forward to working with you!

#### Before You Call

When you have an airfield lighting or system control system problem it is our goal to support airfield maintenance staff as quickly as possible. To support this effort we ask that you have the following information ready before calling.

- The *airport code*
- If not with an airport, then company name (prefer customer id number)
- Contact phone number and email address
- Product with part number preferable or product number
- Have you reviewed the product's manual and troubleshooting guide
- Do you have a *True RMS* meter available (and any other necessary tools)
- Be located with the product ready to troubleshoot



#### Note

For more information, see [www.adbsafegate.com](http://www.adbsafegate.com), or contact ADB SAFEGATE Support via email at [support@adbsafegate.com](mailto:support@adbsafegate.com) or

Brussels: +32 2 722 17 11

Rest of Europe: +46 (0) 40 699 17 40

Americas: +1 614 861 1304. Press 3 for technical service or press 4 for sales support.

China: +86 (10) 8476 0106

### A.1 ADB SAFEGATE Website

The ADB SAFEGATE website, [www.adbsafegate.com](http://www.adbsafegate.com), offers information regarding our airport solutions, products, company, news, links, downloads, references, contacts and more.

### A.2 Recycling

#### A.2.1 Local Authority Recycling

The disposal of ADB SAFEGATE products is to be made at an applicable collection point for the recycling of electrical and electronic equipment. The correct disposal of equipment prevents any potential negative consequences for the environment and human health, which could otherwise be caused by inappropriate waste handling. The recycling of materials helps to conserve natural resources. For more detailed information about recycling of products, contact your local authority city office.

### A.2.2 ADB SAFEGATE Recycling

ADB SAFEGATE is fully committed to environmentally-conscious manufacturing with strict monitoring of our own processes as well as supplier components and sub-contractor operations. ADB SAFEGATE offers a recycling program for our products to all customers worldwide, whether or not the products were sold within the EU.

ADB SAFEGATE products and/or specific electrical and electronic component parts which are fully removed/separated from any customer equipment and returned will be accepted for our recycling program.

All items returned must be clearly labeled as follows:

- For *ROHS/WEEE* Recycling
- Sender contact information (Name, Business Address, Phone number).
- Main Unit Serial Number.

ADB SAFEGATE will continue to monitor and update according for any future requirements for *EU directives* as and when *EU member states* implement new *regulations* and or *amendments*. It is our aim to maintain our *compliance plan* and assist our customers.

## Company Addresses

ADB SAFEGATE	ADB SAFEGATE, Belgium: Leuvensesteenweg 585, B-1930 Zaventem Belgium
Contact: Tel.: +32 2 722 17 11, Fax: +32 2 722 17 64	Email: <a href="mailto:marketing@adbsafegate.com">marketing@adbsafegate.com</a> Internet: <a href="http://www.adbsafegate.com">www.adbsafegate.com</a>
Americas LLC	ADB SAFEGATE, Americas: 977 Gahanna Parkway, Columbus, OH 43230 USA
Contact: Tel.: +1 (614) 861 1304, Fax: +1 (614) 864 2069	Email: <a href="mailto:sales.us@adbsafegate.com">sales.us@adbsafegate.com</a> Internet: <a href="http://www.adbsafegate.com">www.adbsafegate.com</a>
ADB SAFEGATE Sweden AB	ADB SAFEGATE, Sweden: Djurhagegatan 19 SE-213 76 Malmö Sweden
Contact: Tel.: +46 (0)40 699 17 00, Fax: +46 (0)40 699 17 30	Email: <a href="mailto:marketing@adbsafegate.com">marketing@adbsafegate.com</a> Internet: <a href="http://www.adbsafegate.com">www.adbsafegate.com</a>
ADB SAFEGATE Airfield Technologies Ltd. China	ADB SAFEGATE, China: Unit 603, D Block, CAMIC International Convention Center, No 3, Hua Jia Di East road, ChaoYang district, Beijing 100102 P.R. China
Contact: Tel.: +86 (10) 8476 0106, Fax: +86 (10) 8476 0090	Email: <a href="mailto:china@safegate.com">china@safegate.com</a> Internet: <a href="http://www.adbsafegate.com">www.adbsafegate.com</a>
ADB SAFEGATE Germany GmbH	ADB SAFEGATE Germany GmbH, Mannheim: Konrad-Zuse-Ring 6, D-68163 Mannheim Germany
Contact: Tel.: +49 (621) 87 55 76-0, Fax: +49 (621) 87 55 76-55	Email: <a href="mailto:marketing@adbsafegate.com">marketing@adbsafegate.com</a> Internet: <a href="http://www.adbsafegate.com">www.adbsafegate.com</a>



**Powering Your Airport Performance  
from Approach to Departure**

[adbsafegate.com](https://adbsafegate.com)

Copyright © ADB SAFEGATE, all rights reserved

