



LED PAPI-L PCB Replacement  
PCB Kit 94A0666 and Front Glass kit 94A0674

## Service Bulletin

ALN178, Rev. E, 2021/09/28

  
**ADB  
SAFEGATE**



## A.0 Disclaimer / Standard Warranty

### CE certification

The equipment listed as CE certified means that the product complies with the essential requirements concerning safety and hygiene. The European directives that have been taken into consideration in the design are available on written request to ADB SAFEGATE.

### ETL certification

The equipment listed as ETL certified means that the product complies with the essential requirements concerning safety and FAA Airfield regulations. The FAA directives that have been taken into consideration in the design are available on written request to ADB SAFEGATE.

### All Products Guarantee

ADB SAFEGATE will correct by repair or replacement per the applicable guarantee above, at its option, equipment or parts which fail because of mechanical, electrical or physical defects, provided that the goods have been properly handled and stored prior to installation, properly installed and properly operated after installation, and provided further that Buyer gives ADB SAFEGATE written notice of such defects after delivery of the goods to Buyer. Refer to the Safety section for more information on Material Handling Precautions and Storage precautions that must be followed.

ADB SAFEGATE reserves the right to examine goods upon which a claim is made. Said goods must be presented in the same condition as when the defect therein was discovered. ADB SAFEGATE further reserves the right to require the return of such goods to establish any claim.

ADB SAFEGATE's obligation under this guarantee is limited to making repair or replacement within a reasonable time after receipt of such written notice and does not include any other costs such as the cost of removal of defective part, installation of repaired product, labor or consequential damages of any kind, the exclusive remedy being to require such new parts to be furnished.

ADB SAFEGATE's liability under no circumstances will exceed the contract price of goods claimed to be defective. Any returns under this guarantee are to be on a transportation charges prepaid basis. For products not manufactured by, but sold by ADB SAFEGATE, warranty is limited to that extended by the original manufacturer. This is ADB SAFEGATE's sole guarantee and warranty with respect to the goods; there are no express warranties or warranties of fitness for any particular purpose or any implied warranties of fitness for any particular purpose or any implied warranties other than those made expressly herein. All such warranties being expressly disclaimed.

### Standard Products Guarantee

Products manufactured by ADB SAFEGATE are guaranteed against mechanical, electrical, and physical defects (excluding lamps) which may occur during proper and normal use for a period of two years from the date of ex-works delivery, and are guaranteed to be merchantable and fit for the ordinary purposes for which such products are made.



#### Note

See your sales order contract for a complete warranty description.

Replaced or repaired equipment under warranty falls into the warranty of the original delivery. No new warranty period is started for these replaced or repaired products.

### FAA Certified products manufactured by ADB SAFEGATE

ADB SAFEGATE L858 Airfield Guidance Signs are warranted against mechanical and physical defects in design or manufacture for a period of 2 years from date of installation, per FAA AC 150/5345-44 (applicable edition).

ADB SAFEGATE LED products (with the exception of obstruction lighting) are warranted against electrical defects in design or manufacture of the LED or LED specific circuitry for a period of 4 years from date of installation, per FAA EB67 (applicable edition). These FAA certified constant current (series) powered LED products must be installed, interfaced and powered with and through products certified under the FAA Airfield Lighting Equipment Program (ALECP) to be included in this 4 (four) year warranty. This includes, but is not limited to, interface with products such as Base Cans, Isolation Transformers, Connectors, Wiring, and Constant Current Regulators.



## Note

See your sales order contract for a complete warranty description.

Replaced or repaired equipment under warranty falls into the warranty of the original delivery. No new warranty period is started for these replaced or repaired products.

---

## Liability

---



### WARNING

Use of the equipment in ways other than described in the catalog leaflet and the manual may result in personal injury, death, or property and equipment damage. Use this equipment only as described in the manual.

---

ADB SAFEGATE cannot be held responsible for injuries or damages resulting from non-standard, unintended uses of its equipment. The equipment is designed and intended only for the purpose described in the manual. Uses not described in the manual are considered unintended uses and may result in serious personal injury, death or property damage.

Unintended uses, includes the following actions:

- Making changes to equipment that have not been recommended or described in this manual or using parts that are not genuine ADB SAFEGATE replacement parts or accessories.
- Failing to make sure that auxiliary equipment complies with approval agency requirements, local codes, and all applicable safety standards if not in contradiction with the general rules.
- Using materials or auxiliary equipment that are inappropriate or incompatible with your ADB SAFEGATE equipment.
- Allowing unskilled personnel to perform any task on or with the equipment.

## © ADB SAFEGATE BV

This manual or parts thereof may not be reproduced, stored in a retrieval system, or transmitted, in any form or by any means, electronic, mechanical, photocopying, recording, nor otherwise, without ADB SAFEGATE BV's prior written consent.

This manual could contain technical inaccuracies or typographical errors. ADB SAFEGATE BV reserves the right to revise this manual from time to time in the contents thereof without obligation of ADB SAFEGATE BV to notify any person of such revision or change. Details and values given in this manual are average values and have been compiled with care. They are not binding, however, and ADB SAFEGATE BV disclaims any liability for damages or detriments suffered as a result of reliance on the information given herein or the use of products, processes or equipment to which this manual refers. No warranty is made that the use of the information or of the products, processes or equipment to which this manual refers will not infringe any third party's patents or rights. The information given does not release the buyer from making their own experiments and tests.

# TABLE OF CONTENTS

<b>1.0 Safety</b>	<b>1</b>
1.1 Safety Messages	1
1.1.1 Introduction to Safety	2
1.1.2 Intended Use	2
1.1.3 Material Handling Precautions: Storage	3
1.1.4 Operation Safety	3
1.1.5 Maintenance Safety	3
1.1.6 Material Handling Precautions, ESD	4
<b>2.0 Main PCB and Front Glass Replacement</b>	<b>5</b>
2.1 How to work with the manual	5
2.2 PAPI-L Side Panel and Control PCB Installation Notes	5
<b>3.0 Main PCB Replacement</b>	<b>7</b>
3.1 Replacing the Control/Display Side Panel Assembly (w/Main PCB)	7
<b>4.0 Front Glass Replacement</b>	<b>17</b>
4.1 Replace the PAPI-L front glass	18
4.2 Replace the Two Desiccant Packs	19
<b>A.0 SUPPORT</b>	<b>21</b>
A.1 ADB SAFEGATE Website	21
A.2 Recycling	22
A.2.1 Local Authority Recycling	22
A.2.2 ADB SAFEGATE Recycling	22



# 1.0 Safety

## Introduction to Safety






This section contains general safety instructions for installing and using ADB SAFEGATE equipment. Some safety instructions may not apply to the equipment in this manual. Task- and equipment-specific warnings are included in other sections of this manual where appropriate.

## 1.1 Safety Messages


### HAZARD Icons used in the manual

For all HAZARD symbols in use, see the Safety section. All symbols must comply with ISO and ANSI standards.

Carefully read and observe all safety instructions in this manual, which alert you to safety hazards and conditions that may result in personal injury, death or property and equipment damage and are accompanied by the symbol shown below.

	<b>WARNING</b> Failure to observe a warning may result in personal injury, death or equipment damage.
	<b>DANGER - Risk of electrical shock or ARC FLASH</b> Disconnect equipment from line voltage. Failure to observe this warning may result in personal injury, death, or equipment damage. ARC Flash may cause blindness, severe burns or death.
	<b>WARNING - Wear personal protective equipment</b> Failure to observe may result in serious injury.
	<b>WARNING - Do not touch</b> Failure to observe this warning may result in personal injury, death, or equipment damage.
	<b>CAUTION</b> Failure to observe a caution may result in equipment damage.

### Qualified Personnel

	<b>Important Information</b> The term <b>qualified personnel</b> is defined here as individuals who thoroughly understand the equipment and its safe operation, maintenance and repair. Qualified personnel are physically capable of performing the required tasks, familiar with all relevant safety rules and regulations and have been trained to safely install, operate, maintain and repair the equipment. It is the responsibility of the company operating this equipment to ensure that its personnel meet these requirements. Always use required personal protective equipment (PPE) and follow safe electrical work practice.
---	--

### 1.1.1 Introduction to Safety



#### CAUTION

##### Unsafe Equipment Use

This equipment may contain electrostatic devices, hazardous voltages and sharp edges on components

- Read installation instructions in their entirety before starting installation.
- Become familiar with the general safety instructions in this section of the manual before installing, operating, maintaining or repairing this equipment.
- Read and carefully follow the instructions throughout this manual for performing specific tasks and working with specific equipment.
- Make this manual available to personnel installing, operating, maintaining or repairing this equipment.
- Follow all applicable safety procedures required by your company, industry standards and government or other regulatory agencies.
- Install all electrical connections to local code.
- Use only electrical wire of sufficient gauge and insulation to handle the rated current demand. All wiring must meet local codes.
- Route electrical wiring along a protected path. Make sure they will not be damaged by moving equipment.
- Protect components from damage, wear, and harsh environment conditions.
- Allow ample room for maintenance, panel accessibility, and cover removal.
- Protect equipment with safety devices as specified by applicable safety regulations
- If safety devices must be removed for installation, install them immediately after the work is completed and check them for proper functioning prior to returning power to the circuit.

**Failure to follow this instruction can result in serious injury or equipment damage**

### Additional Reference Materials



#### Important Information

- IEC - International Standards and Conformity Assessment for all electrical, electronic and related technologies.
- IEC 60364 - Electrical Installations in Buildings.
- FAA Advisory: AC 150/5340-26 (current edition), Maintenance of Airport Visual Aid Facilities.
- Maintenance personnel must refer to the maintenance procedure described in the ICAO Airport Services Manual, Part 9.
- ANSI/NFPA 79, Electrical Standards for Metalworking Machine Tools.
- National and local electrical codes and standards.

### 1.1.2 Intended Use



#### CAUTION

##### Use this equipment as intended by the manufacturer

This equipment is designed to perform a specific function, do not use this equipment for other purposes

- Using this equipment in ways other than described in this manual may result in personal injury, death or property and equipment damage. Use this equipment only as described in this manual.

**Failure to follow this instruction can result in serious injury or equipment damage**



### 1.1.3 Material Handling Precautions: Storage



#### CAUTION

##### Improper Storage

Store this equipment properly

- If equipment is to be stored prior to installation, it must be protected from the weather and kept free of condensation and dust.

**Failure to follow this instruction can result in equipment damage**

### 1.1.4 Operation Safety



#### CAUTION

##### Improper Operation

Do Not Operate this equipment other than as specified by the manufacturer

- Only qualified personnel, physically capable of operating the equipment and with no impairments in their judgment or reaction times, should operate this equipment.
- Read all system component manuals before operating this equipment. A thorough understanding of system components and their operation will help you operate the system safely and efficiently.
- Before starting this equipment, check all safety interlocks, fire-detection systems, and protective devices such as panels and covers. Make sure all devices are fully functional. Do not operate the system if these devices are not working properly. Do not deactivate or bypass automatic safety interlocks or locked-out electrical disconnects or pneumatic valves.
- Protect equipment with safety devices as specified by applicable safety regulations.
- If safety devices must be removed for installation, install them immediately after the work is completed and check them for proper functioning.
- Route electrical wiring along a protected path. Make sure they will not be damaged by moving equipment.
- Never operate equipment with a known malfunction.
- Do not attempt to operate or service electrical equipment if standing water is present.
- Use this equipment only in the environments for which it is rated. Do not operate this equipment in humid, flammable, or explosive environments unless it has been rated for safe operation in these environments.
- Never touch exposed electrical connections on equipment while the power is ON.

**Failure to follow these instructions can result in equipment damage**

### 1.1.5 Maintenance Safety



#### DANGER

##### Electric Shock Hazard

This equipment may contain electrostatic devices

- Do not operate a system that contains malfunctioning components. If a component malfunctions, turn the system OFF immediately.
- Disconnect and lock out electrical power.
- Allow only qualified personnel to make repairs. Repair or replace the malfunctioning component according to instructions provided in its manual.

**Failure to follow these instructions can result in death or equipment damage**

### 1.1.6 Material Handling Precautions, ESD



#### CAUTION

##### **Electrostatic Sensitive Devices**

This equipment may contain electrostatic devices

- Protect from electrostatic discharge.
- Electronic modules and components should be touched only when this is unavoidable e.g. soldering, replacement.
- Before touching any component of the cabinet you shall bring your body to the same potential as the cabinet by touching a conductive earthed part of the cabinet.
- Electronic modules or components must not be brought in contact with highly insulating materials such as plastic sheets, synthetic fiber clothing. They must be laid down on conductive surfaces.
- The tip of the soldering iron must be grounded.
- Electronic modules and components must be stored and transported in conductive packing.

**Failure to follow this instruction can result in equipment damage**

## 2.0 Main PCB and Front Glass Replacement

Description: Provides users with instruction of how to choose the correct kit and installation instructions to install the 94A0666/XXX and the 94A0674/X kits.

### 2.1 How to work with the manual

1. Become familiar with the structure and content.
2. Read the entire service bulletin before beginning any procedure. Read all safety messages.
3. Carry out the actions completely and in the given sequence.

### 2.2 PAPI-L Side Panel and Control PCB Installation Notes



#### Note

1. Make certain the DIP switch settings are accurately copied from the old PCB, to the new PCB Dip Switches. Make certain the J7 settings are accurately copied from the old PCB, to the new PCB J7.
2. The Dip switch settings should be identical on all across all 4 PCB's with the exception of switch 1-1 and 1-2 which set the CAN BUS address associated with the box position of 1 through 4.
3. See *LED PAPI Control Board Overview* and *2-box and 4-box Termination Setup at J7* in the PAPI-L User Manual, 96A0446 for LPL series PAPIs or DM00012-000-01 for RP series PAPIs. See [www.adbsafegate.com](http://www.adbsafegate.com) under the Product Center.

1. Read the entire set of procedures before starting any steps. Call ADB Safegate if there is anything that is not clear to you prior to starting this replacement procedure.
2. Reference the manual 96A0446 for LPL series PAPIs or DM00012-000-01 for RP series PAPIs for applicable internal wiring diagrams.



#### Note

With each control board assembly, the corresponding input PCB (44A7392/X) is provided as an option.



## 3.0 Main PCB Replacement

Kit 94A0666/XXX, RELIANCE PAPI Control Board Replacement Kit.



### Note

Read the following sections prior to performing any tasks.  
Follow these procedures carefully and call ADB SAFEGATE for assistance, if required.

Use the following matrix to identify the compatible kit for your LED PAPI.

### Ordering Code

94A0666 /

#### Power

- 1 = Voltage-Powered Primary PAPI
- 2 = Voltage-Powered Secondary PAPI
- 3 = Current-Powered PAPI

#### Series Option

- 0 = LPL Series PAPI (PN begins with LPL)
- 2 = RP Series PAPI (PN begins with RP)

#### Input Power PCB Option

- 0 = Input Power PCB Not Included
- = Input Power PCB Included

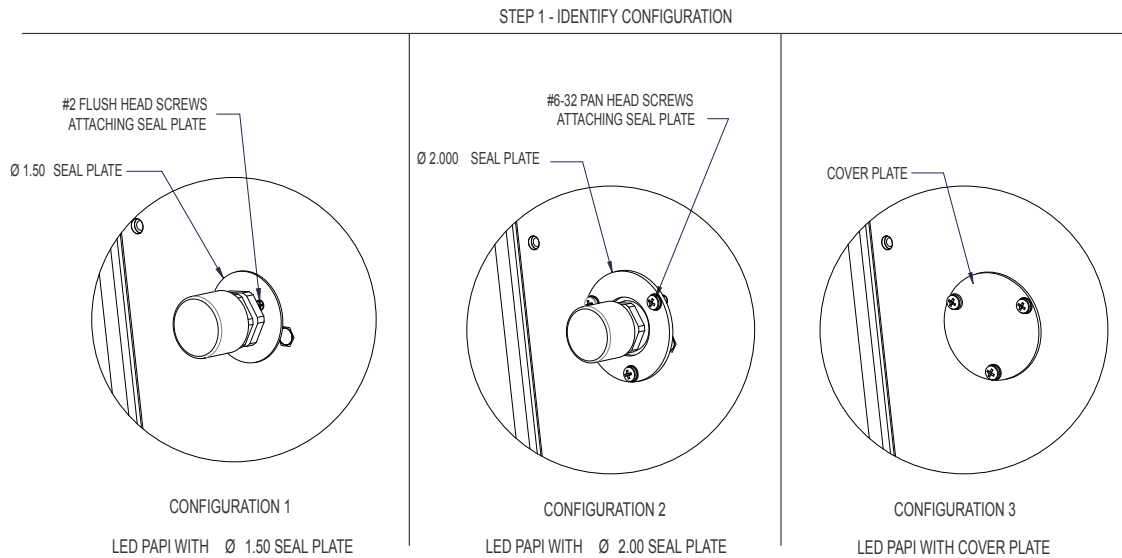


## 3.1 Replacing the Control/Display Side Panel Assembly (w/Main PCB)

1. Identify the configuration of your RELIANCE PAPI enclosure.
  - a) If the enclosure is not equipped with a baffle, proceed to step 4.
  - b) If the enclosure is identified as Configuration 1, proceed to step 2.

- c) If the enclosure is identified as Configuration 2, proceed to step 3.
- d) If the enclosure is identified as Configuration 3, proceed to step 4.

**Figure 1: Identify the Side Panel Configuration**



## 2. Configuration 1 Baffle Plate removal instructions.

RELIANCE PAPI WITH Ø 1.5-in SEAL PLATE.

- a) Slightly loosen the sealing gland nut on the 77A0263 cord grip. Do not allow the Actuator fitting to rotate as this will break the seal.
- b) Remove the 77A0263 cord grip from the 60A4575 actuator fitting. It is necessary to secure the 60A4575 actuator fitting to prevent rotation.



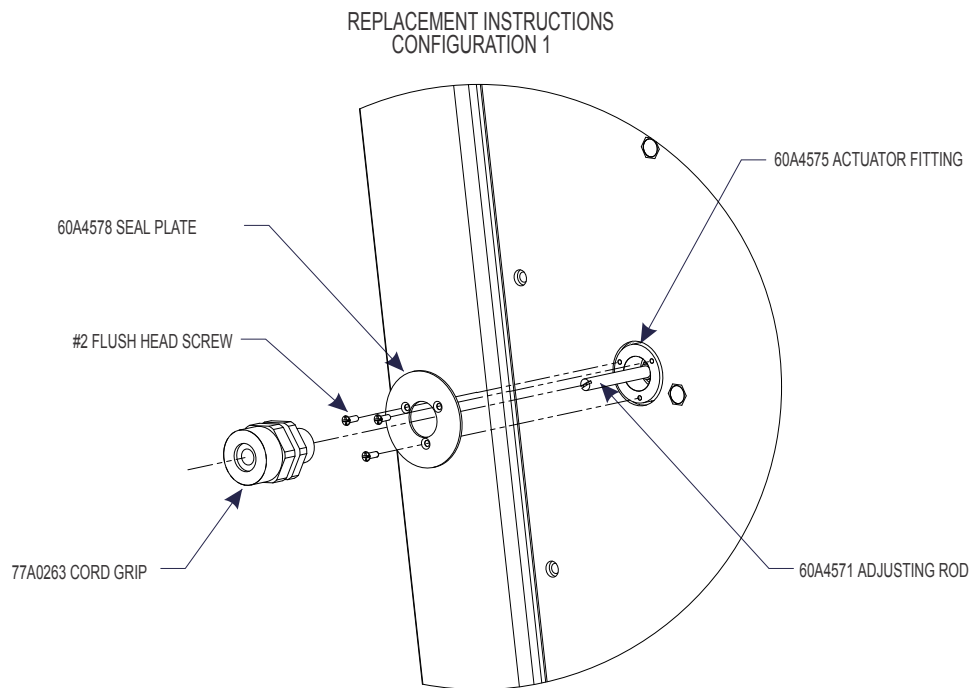
### Note

Do not allow the 60A4571 adjusting rod to rotate as this will change the baffle setting.

---

- c) Remove the three #2 flush screws and 60A4578 seal plate - discard.
- d) Proceed to step 4

**Figure 2: Remove the baffle closeout (configuration 1)**



3. Configuration 2 Baffle Plate removal instructions.

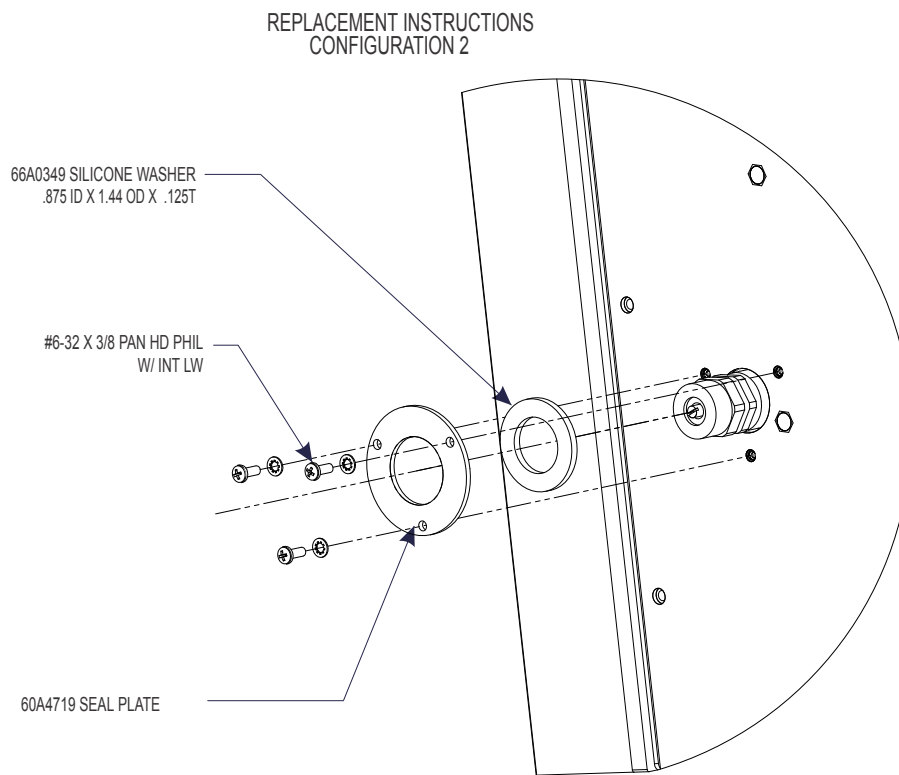
- a) Remove the #6 hardware attaching the 60A4719 closeout plate.
- b) Remove the 66A0349 silicone washer.
- c) Proceed to step 4, Side Panel Removal.



**Note**

Do NOT loosen the Gland Nut (77A0263), or threaded connection to the Actuator Fitting (60A4575).

**Figure 3: Remove the baffle closeout (configuration 2)**

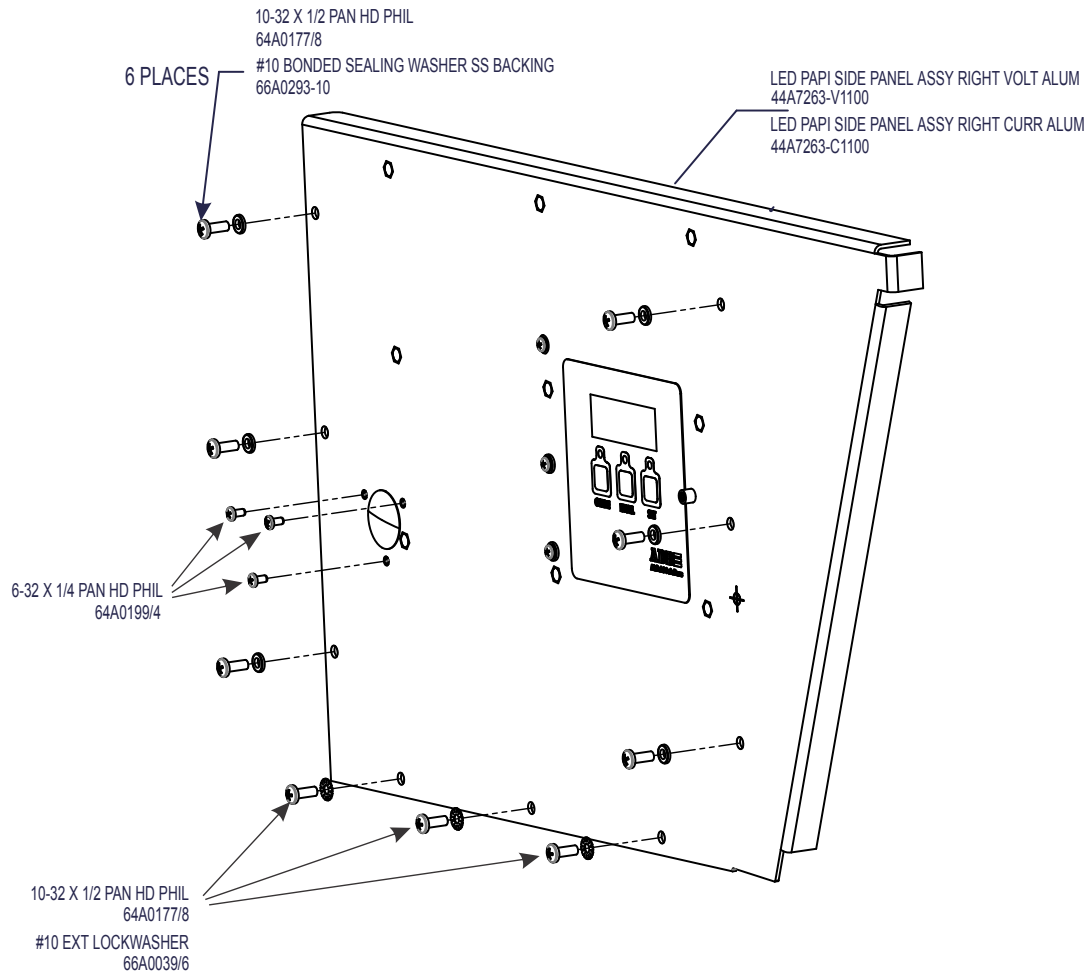




#### 4. Side Panel Removal - all configurations.

- a) Disconnect all of the plug-in attachments to the 44A7265 Side Panel Assembly.
- b) Remove (9) #10-3 screws attaching the 44A7263 Side Panel Assembly.
- c) Set DIP switches on the replacement 44A7263 Side Panel Assembly to match the DIP switches on the removed Side Panel Assembly. Reference the user manual 96A0446 for the LP series PAPI and DM00012-000-01 for the RP series PAPI for applicable wiring diagrams.

**Figure 4: Side Panel Removal/Replacement**

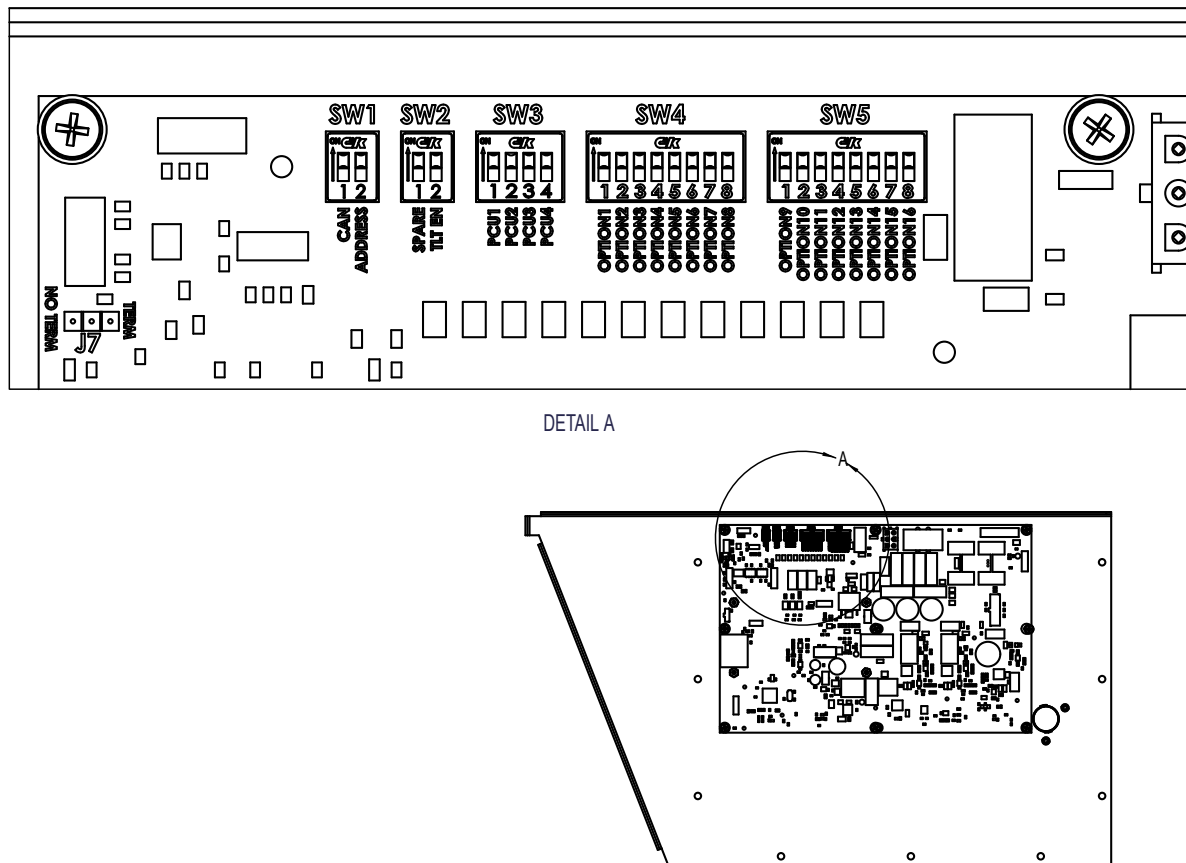


#### Note

Prior to Side Panel Replacement, set the Dip Switches per user manual 96A0446 for the LPL series PAPI and DM00012-000-01 for the RP series PAPI and Figure 6.

- Set DIP switches on the replacement Main PCB assembly to match the DIP switches on the removed Main PCB assembly.  
Refer to [Figure](#) for DIP switch location.

**Figure 5: Control PCB DIP Switch Location**



6. Reassembly of Baffle Actuator Assembly - if present.

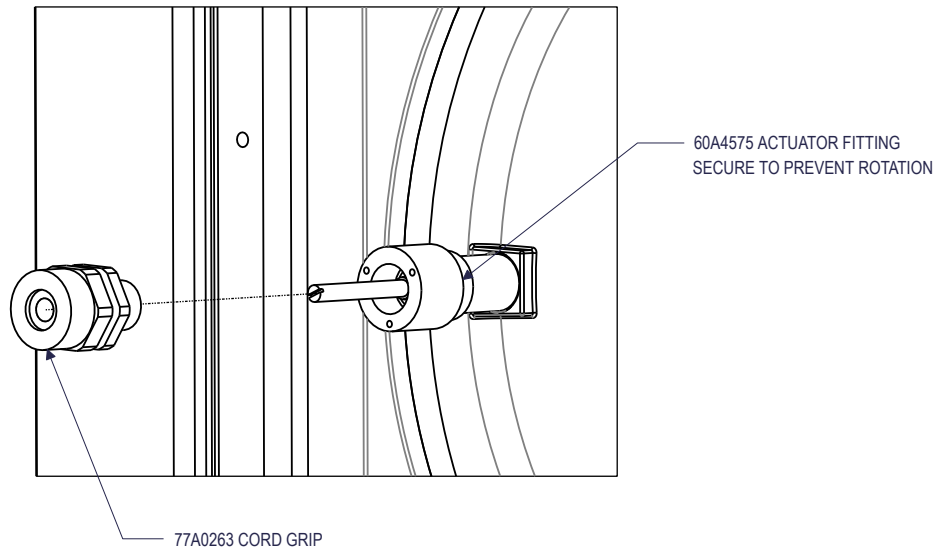
a) Enclosure without a baffle and configuration 3 Side Panel Replacement.

- Install the replacement side panel using the provided hardware - (9) # 10-32 screws.
- Re-attach cable-plugs to new RELIANCE PAPI control board. Reference the user manual 96A0446 for the LP series PAPI and DM00012-000-01 for the RP series PAPI for applicable wiring diagrams.

b) Configuration 1 Side Panel Replacement instructions.

- Apply a light coating of lubricant to the protruding 60A4571 adjusting rod.
- Install the 77A0263 cord grip using pipe thread sealant. It is necessary to secure the 60A4575 Actuator Fitting to prevent rotation. Do not allow the 60A4571 Adjusting Rod to rotate as this will change the baffle setting.

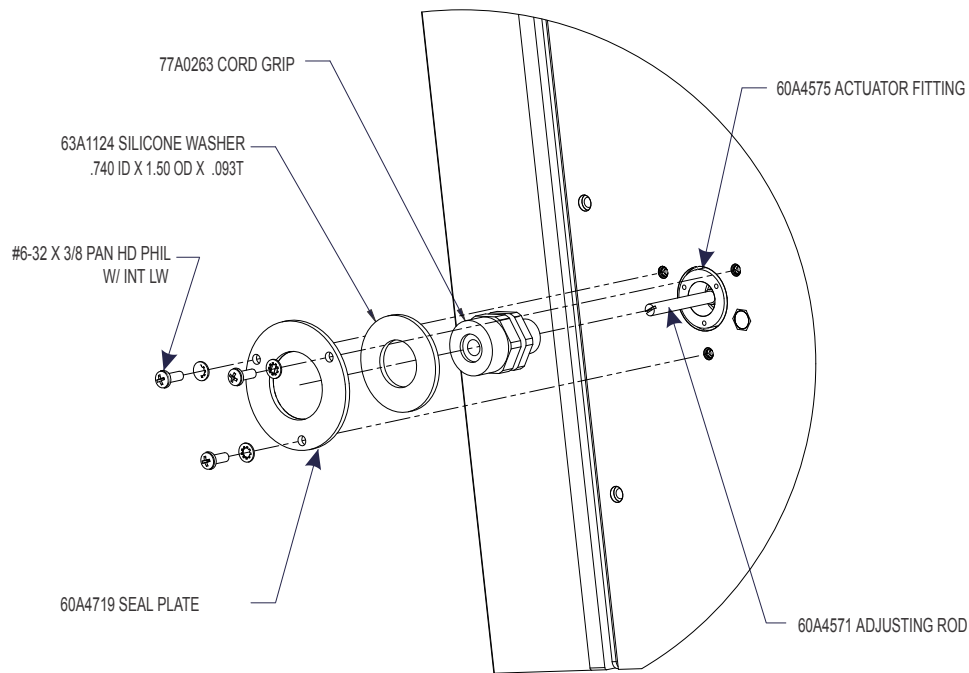
**Figure 6: Reassembly of the Baffle Actuator Fitting (configuration 1)**



- Install replacement side panel using provided hardware - (9) #10-32 screws.

- Stretch the 63A1124 Seal Washer over the cord grip fitting and install the 60A4719 Closeout Plate using the #6 hardware provided.
- Re-attach plugs to new RELIANCE PAPI control board. Reference the user manual 96A0446 for the LP series PAPI and DM00012-000-01 for the RP series PAPI for applicable wiring diagrams.

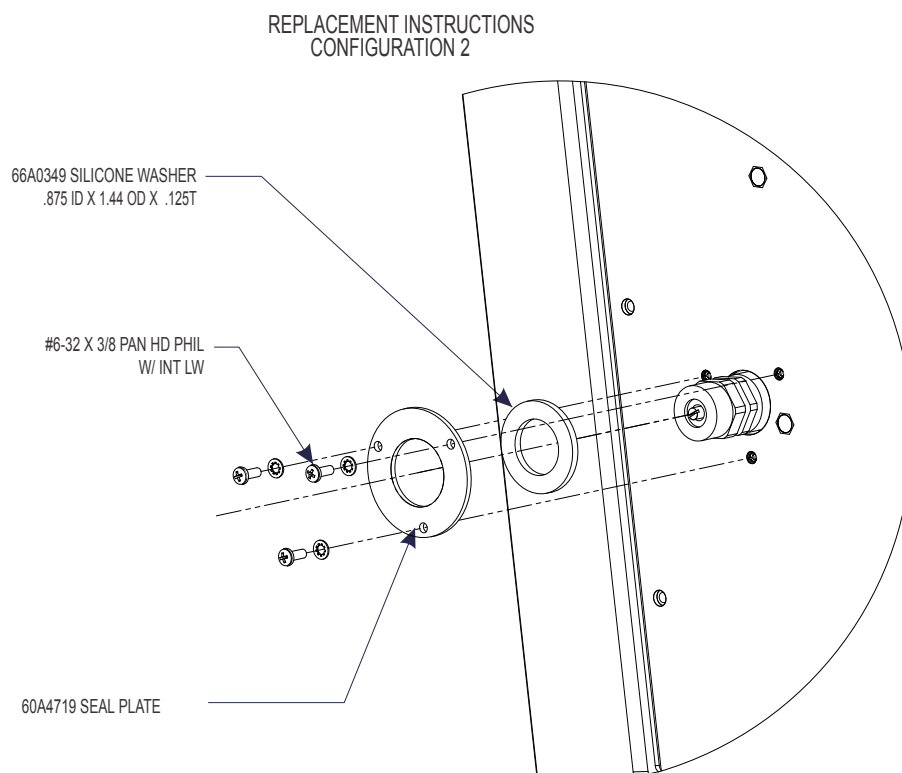
**Figure 7: Reassembly of the Baffle Seal Washer and Seal Plate (configuration 1)**



c) Configuration 2 Side Panel Replacement instructions.

- Install the replacement side panel using provided hardware - (9) #10-32 screws.
- Install the 66A0349 Seal Washer over the cord grip fitting and install the 60A4719 Seal Plate using the #6 hardware provided.
- Re-attach plugs to new RELIANCE PAPI control board. Reference the user manual 96A0446 for the LP series PAPI and DM00012-000-01 for the RP series PAPI for applicable wiring diagrams.

**Figure 8: Reassembly of the Baffle (configuration 2)**



7. Replace the input PCB as necessary. If input PCB is not replaced, proceed to step 8.



**Note**

With each control board assembly, the corresponding input PCB (44A7392/X) is provided and must be replaced.

- a) Disconnect wiring from the 44A7392/X input power assembly.
  - b) Remove 44A7392/X input power assembly by lifting the Din Rail mount tabs to release it from the Din Rail.
  - c) Replace with 44A7392/X input power assembly provided with the kit. Install by snapping the mounting tabs onto the Din Rail.
  - d) Re-connect wiring to 44A7392/X Input power assembly. Reference manual for applicable internal wiring diagram.
8. On main control board change dip switch 4-6 to the "ON" position.
  9. Turn Regulator on to step B5.
  10. Observe the digital display, the display will present the firmware version. If the digital display reads firmware version 1.33, skip to step 12. If the firmware version is newer (or higher) than 1.33, continue with the next step.
  11. Allow time for PAPI to execute calibration process. When finished light output from PAPI will blink every second.
  12. Turn regulator off.
  13. Change dip switch 4-6 to the "OFF" position.
  14. Turn regulator on and verify PAPI changes light intensity at all steps.
  15. Turn regulator off.
  16. Replace the top cover gasket if necessary. Attach the top cover.
  17. Go to Reference manual for Understanding the LED Readout and complete the setup and alignment procedures.



## 4.0 Front Glass Replacement

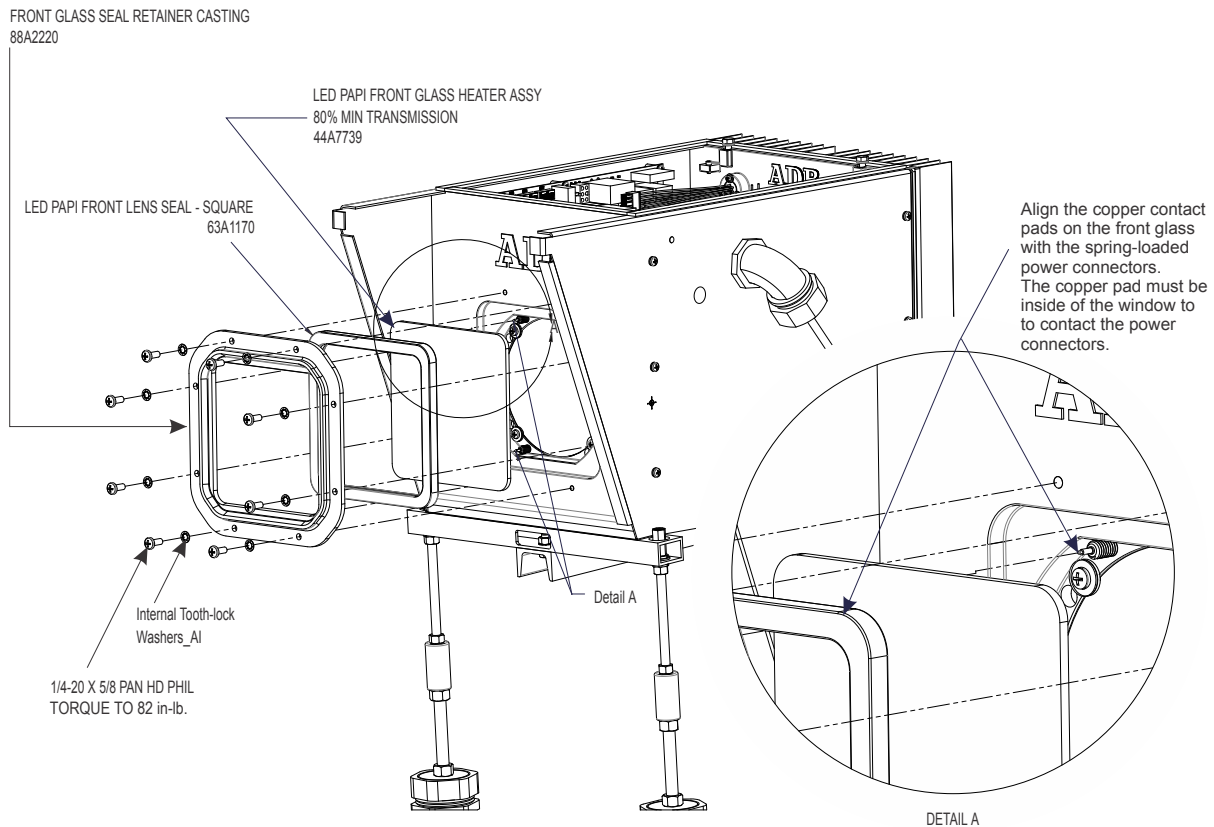
Kit 94A0674/1, RELIANCE PAPI front glass replacement kit.



### Note

When replacing the LED PAPI front glass, the desiccant packs must also be replaced. The required desiccant packs and mounting hardware are included in the front glass replacement kit 94A0674/1.

**Figure 9: Front Glass Replacement**

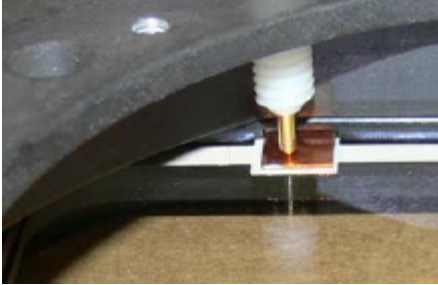


## 4.1 Replace the PAPI-L front glass

Kit 94A0674/1, RELIANCE PAPI Front Glass Replacement Kit (GL-01).

1. Remove and discard the (8) 1/4-20 fasteners and washers attaching the 88A2220 seal retainer.
2. Remove and discard the defective front glass and seal.
3. Install the new 63A1170 front lens seal by wrapping around the new 44A7739 front glass.
4. Align the copper contact pads on the 44A7739 front glass with the spring loaded power connectors. The copper pad must be on inside of window (facing the PAPI) to contact the spring loaded power connectors.

**Figure 10: Copper Tab and Spring Loaded Power Connector**



### Note

Align the copper contact pads on the front glass with the spring-loaded power connectors.  
The copper pad must be inside of the window (facing the PAPI) to contact the power connectors.

---

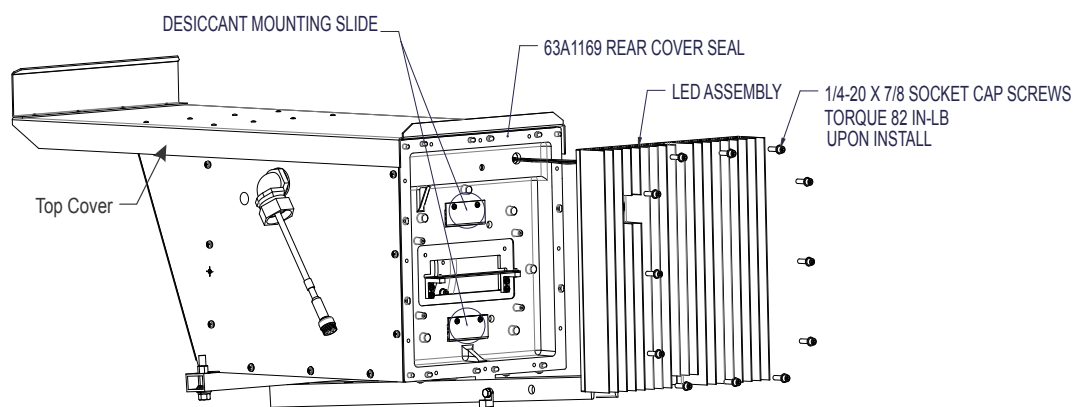
5. Install 88A2220 seal retainer with new (8) 1/4-20 fasteners and washers, torque to 82 IN-LB.
6. Replace the desiccant packs. See [Replace the Two Desiccant Packs](#).
7. Verify fuse F5 on the control board.



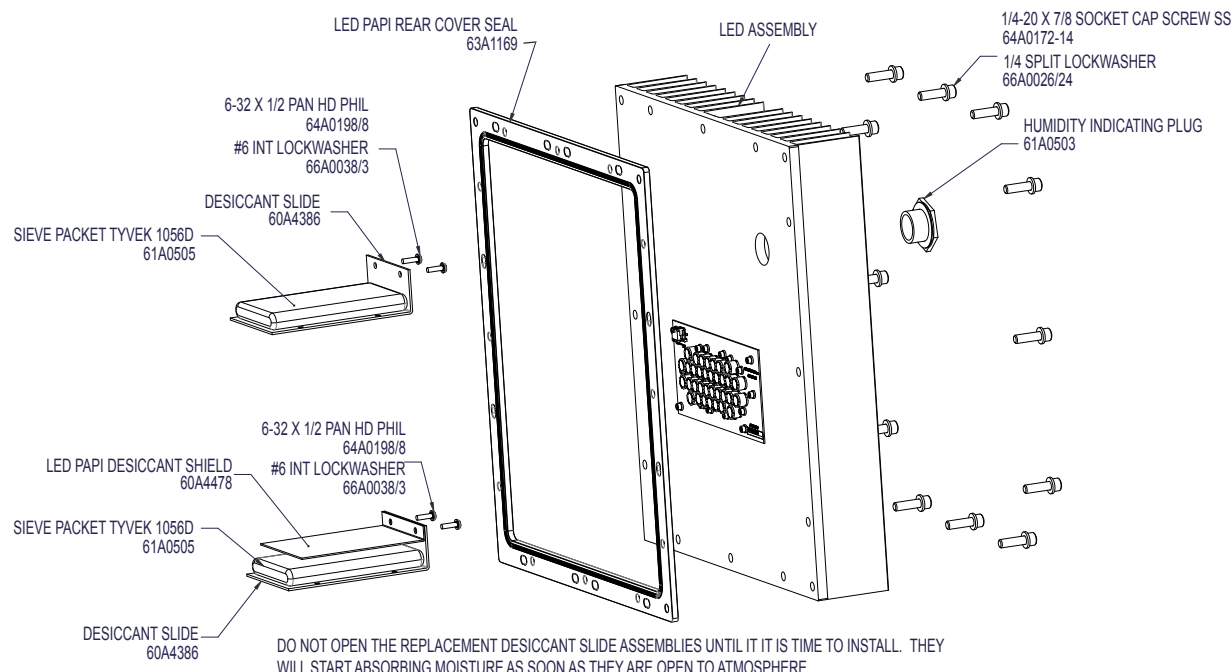
## 4.2 Replace the Two Desiccant Packs

1. Remove and discard the (12) 1/4-20 SHCS and washers from the rear of the LED assembly heat sink.
2. Disconnect the wire connector from the LED assembly.
3. Discard the rear cover seal gasket.
4. Replace the two desiccant packs. (only in dry conditions and not until ready to reassemble)
  - a) Remove and discard the two screws holding each desiccant slides.
  - b) Remove and discard the desiccants, slides and shield.
  - c) Insert the (2) new pre-assembled desiccant packs with slides and attach each with the two fasteners and washers. Ensure the new desiccant shield is installed with the lower slide only.

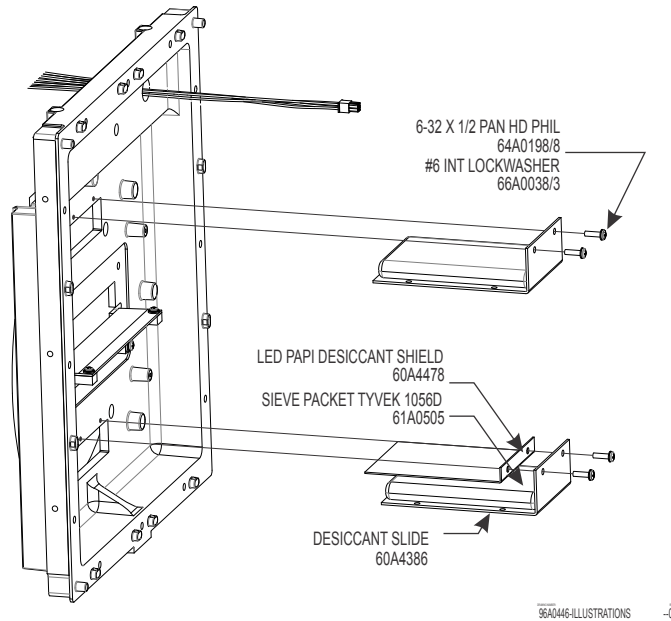
**Figure 11: LED Assembly**



**Figure 12: Desiccant Packs and Rear Seal**



**Figure 13: Desiccant Packs**



5. Replace the rear cover seal gasket.
6. Connect the wire connector to the LED assembly.
7. Replace the (12) 1/4-20 SHCS to the rear of the LED assembly, torque to 82 in-lb.

## Appendix A: SUPPORT

Our experienced engineers are available for support and service at all times, 24 hour/7 days a week. They are part of a dynamic organization making sure the entire ADB SAFEGATE is committed to minimal disturbance for airport operations.

### ADB SAFEGATE Support

#### Live Technical Support - Americas

If at any time you have a question or concern about your product, just contact ADB SAFEGATE's technical service department. Trained in all areas of system issues, troubleshooting, quality control and technical assistance, our highly experienced Technical support specialists are available 24 hours a day, seven days a week to provide assistance over the phone.

ADB SAFEGATE **Americas Technical Service & Support (US & Canada): +1-800-545-4157**

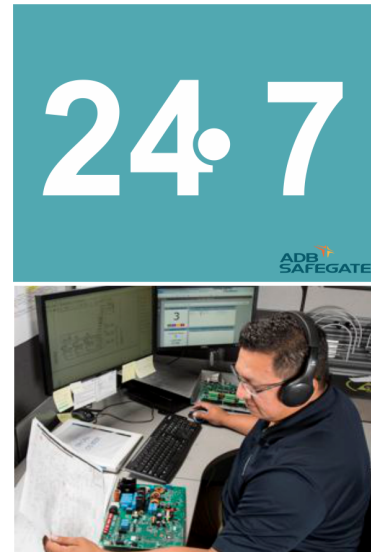
**ADB SAFEGATE Americas Technical Service & Support (International): +1-614-861-1304**

During regular business hours, you can also Chat with a Service Technician. We look forward to working with you!

#### Before You Call

When you have an airfield lighting or system control system problem it is our goal to support airfield maintenance staff as quickly as possible. To support this effort we ask that you have the following information ready before calling.

- The *airport code*
- If not with an airport, then company name (prefer customer id number)
- Contact phone number and email address
- Product with part number preferable or product number
- Have you reviewed the product's manual and troubleshooting guide
- Do you have a *True RMS* meter available (and any other necessary tools)
- Be located with the product ready to troubleshoot



#### Note

For more information, see [www.adbsafegate.com](http://www.adbsafegate.com), or contact ADB SAFEGATE Support via email at [support@adbsafegate.com](mailto:support@adbsafegate.com) or

Brussels: +32 2 722 17 11

Rest of Europe: +46 (0) 40 699 17 40

Americas: +1 614 861 1304. Press 3 for technical service or press 4 for sales support.

China: +86 (10) 8476 0106

### A.1 ADB SAFEGATE Website

The ADB SAFEGATE website, [www.adbsafegate.com](http://www.adbsafegate.com), offers information regarding our airport solutions, products, company, news, links, downloads, references, contacts and more.

## A.2 Recycling

### A.2.1 Local Authority Recycling

The disposal of ADB SAFEGATE products is to be made at an applicable collection point for the recycling of electrical and electronic equipment. The correct disposal of equipment prevents any potential negative consequences for the environment and human health, which could otherwise be caused by inappropriate waste handling. The recycling of materials helps to conserve natural resources. For more detailed information about recycling of products, contact your local authority city office.

### A.2.2 ADB SAFEGATE Recycling

ADB SAFEGATE is fully committed to environmentally-conscious manufacturing with strict monitoring of our own processes as well as supplier components and sub-contractor operations. ADB SAFEGATE offers a recycling program for our products to all customers worldwide, whether or not the products were sold within the EU.

ADB SAFEGATE products and/or specific electrical and electronic component parts which are fully removed/separated from any customer equipment and returned will be accepted for our recycling program.

All items returned must be clearly labeled as follows:

- For *ROHS/WEEE* Recycling
- Sender contact information (Name, Business Address, Phone number).
- Main Unit Serial Number.

ADB SAFEGATE will continue to monitor and update according for any future requirements for *EU directives* as and when *EU member states* implement new *regulations* and or *amendments*. It is our aim to maintain our *compliance plan* and assist our customers.

## Company Addresses

ADB SAFEGATE	ADB SAFEGATE, Belgium: Leuvensesteenweg 585, B-1930 Zaventem Belgium
Contact: Tel.: +32 2 722 17 11, Fax: +32 2 722 17 64	Email: <a href="mailto:marketing@adbsafegate.com">marketing@adbsafegate.com</a> Internet: <a href="http://www.adbsafegate.com">www.adbsafegate.com</a>
Americas LLC	ADB SAFEGATE, Americas: 977 Gahanna Parkway, Columbus, OH 43230 USA
Contact: Tel.: +1 (614) 861 1304, Fax: +1 (614) 864 2069	Email: <a href="mailto:sales.us@adbsafegate.com">sales.us@adbsafegate.com</a> Internet: <a href="http://www.adbsafegate.com">www.adbsafegate.com</a>
ADB SAFEGATE Sweden AB	ADB SAFEGATE, Sweden: Djurhagegatan 19 SE-213 76 Malmö Sweden
Contact: Tel.: +46 (0)40 699 17 00, Fax: +46 (0)40 699 17 30	Email: <a href="mailto:marketing@adbsafegate.com">marketing@adbsafegate.com</a> Internet: <a href="http://www.adbsafegate.com">www.adbsafegate.com</a>
ADB SAFEGATE Airfield Technologies Ltd. China	ADB SAFEGATE, China: Unit 603, D Block, CAMIC International Convention Center, No 3, Hua Jia Di East road, ChaoYang district, Beijing 100102 P.R. China
Contact: Tel.: +86 (10) 8476 0106, Fax: +86 (10) 8476 0090	Email: <a href="mailto:china@safegate.com">china@safegate.com</a> Internet: <a href="http://www.adbsafegate.com">www.adbsafegate.com</a>
ADB SAFEGATE Germany GmbH	ADB SAFEGATE Germany GmbH, Mannheim: Konrad-Zuse-Ring 6, D-68163 Mannheim Germany
Contact: Tel.: +49 (621) 87 55 76-0, Fax: +49 (621) 87 55 76-55	Email: <a href="mailto:marketing@adbsafegate.com">marketing@adbsafegate.com</a> Internet: <a href="http://www.adbsafegate.com">www.adbsafegate.com</a>



**Powering Your Airport Performance  
from Approach to Departure**

[adbsafegate.com](https://adbsafegate.com)

Copyright © ADB SAFEGATE, all rights reserved

