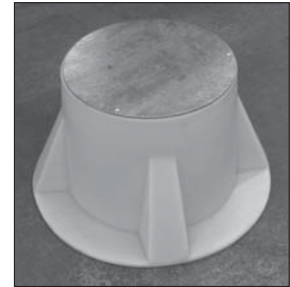


CPL Pullpits

CPL Series Molded Polyethylene Pullpits

Compliance with Standards

T/C: K303 - Transformer Housings for Soils



Application

- The CPL series round conical pullpits are manufactured from a high strength polyethylene compound to provide a rigid, non-brittle pullpit suitable for cable splicing and isolating transformer housings. The round tapered design is compliant with Transport Canada specification K303 and is H20 load rated, when used with the steel cover.
- The reinforced conical design provides for a rigid stable installation and the polyethylene material minimizes any cracking during handling or backfilling of the pullpit.
- Steel locking covers are secured in place using tabs and include provisions for customer supplied #10 SS woodscrews to further secure the cover in place. 600 series covers additionally allow for the installation of a 1/2"-13 SS locking bolt to help prevent inadvertent cover rotation. A tapped through hole is provided on all covers for customer installation of ground lug for connection of circuit grounding as required.
- Various cover options and accessories are available including bottom plates, riser rings and 2" mounting hubs for fixtures.

Features & Benefits

- Round Tapered unit with steel cover complies with Transport Canada Specification K303 and is rated for H20 (vehicle) loading. Test Reports available upon request.
- 1/4"-20 (400 Series Covers) and 3/8"-16 (600 Series Covers) tapped hole provided for ground lug in steel cover.
- Rotational molded polyethylene body provides for a durable, cost-effective construction.
- Conical shape and bottom flange help to eliminate frost heaving and reduce shipping volume.
- Non-metallic body and hot-dipped galvanized cover provide excellent resistance to corrosion.
- Various accessories such as bottom plates, transformer hangers, etc. available to provide for a complete installation.
- 2-3/4" high pullpit riser now available for cover height adjustment. Risers can be stacked for additional height.
- Optional ground lugs and cover warning labels are available, please contact ADB Airfield Solutions.
- Manufactured in Canada by Century Plastics Ltd.

Ordering Code

Pullpit Body
400 = 18" (450 mm) deep
600 = 24" (610 mm) deep
750 = 30" (750 mm) deep

Cover Type

401H = Cover with 2 x 1" turning holes and 2" NPT hub¹
402 = Cover with 2 x 1" turning holes¹
403 = Blank steel locking cover¹
40X = Blank steel non-locking cover (centering tabs only)¹
601H = Cover with 2" NPT center hub²
602 = Cover with 2 x 1" turning holes²
603 = Blank steel locking cover²
60X = Blank steel non-locking cover (centering tabs only)²

Notes

All pullpit covers are hot dip galvanized.

¹ All 400 Series covers have a 1/4"-20 tapped hole for ground lug (by others) and 3 x 1/4" countersunk holes.

² All 600 Series covers have a 3/8"-16 tapped hole for ground lug (by others) and 2 x 1/4" countersunk holes and a 1/2"-13 tapped hole for locking bolt (by others).

Ordering Code

CPL-R3

Pullpit Riser
2-3/4" nominal height

Note: Pullpit risers can be stacked for additional height.

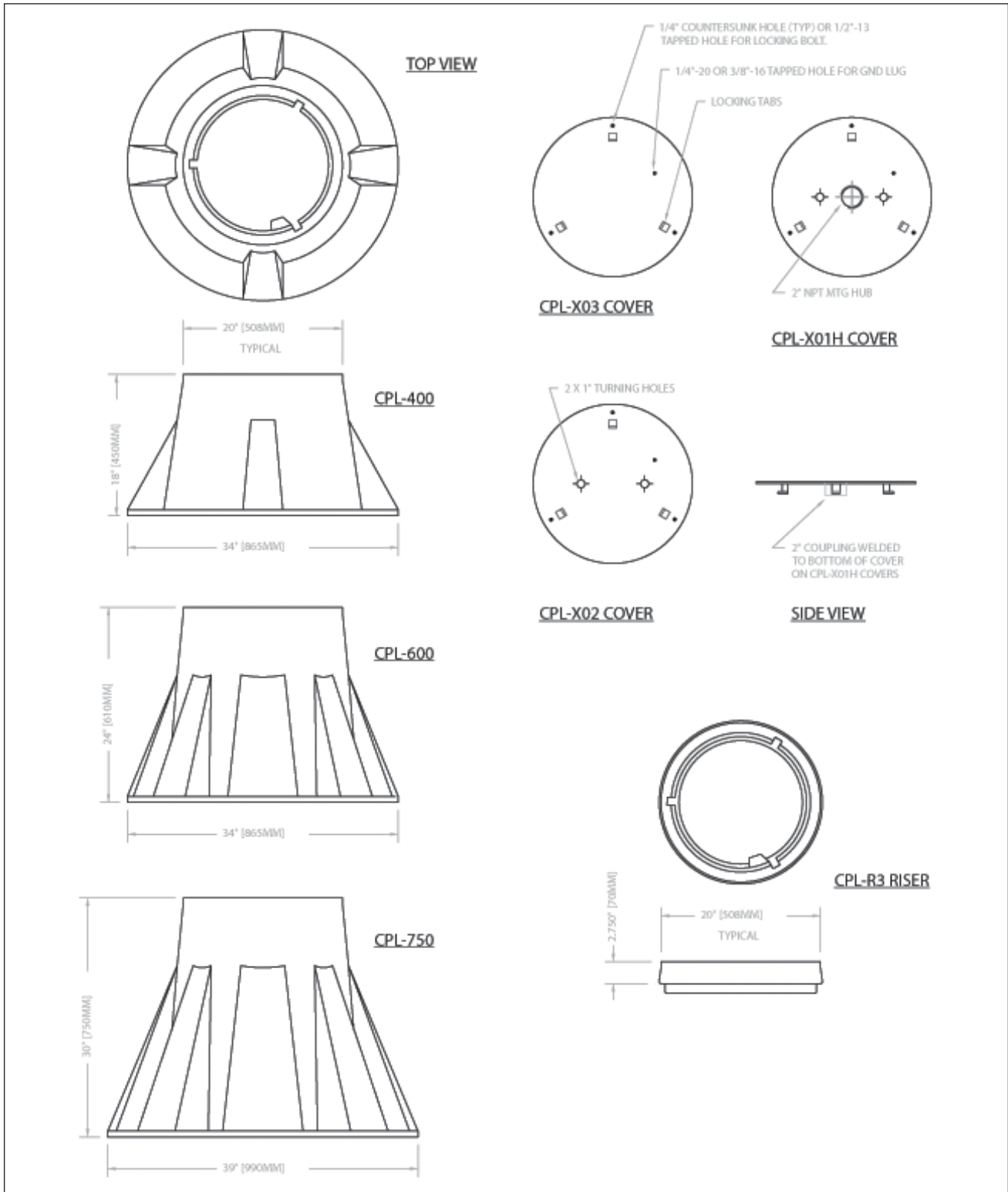
Ordering Code

TH2000

Transformer Hanger



CPL-R3 Riser



Product specifications may be subject to change, and specifications listed here are not binding. Confirm current specifications at time of order.

ADB Airfield Solutions
Leuvensesteenweg 585
B-1930 Zaventem
Belgium

ADB Airfield Solutions, LLC
977 Gahanna Parkway
Columbus, OH 43230
USA

© ADB Airfield Solutions
All rights reserved

Telephone: +32 (0)2 722.17.11
www.adb-air.com

Telephone: +1 614.861.1304
+1 800.545.4157