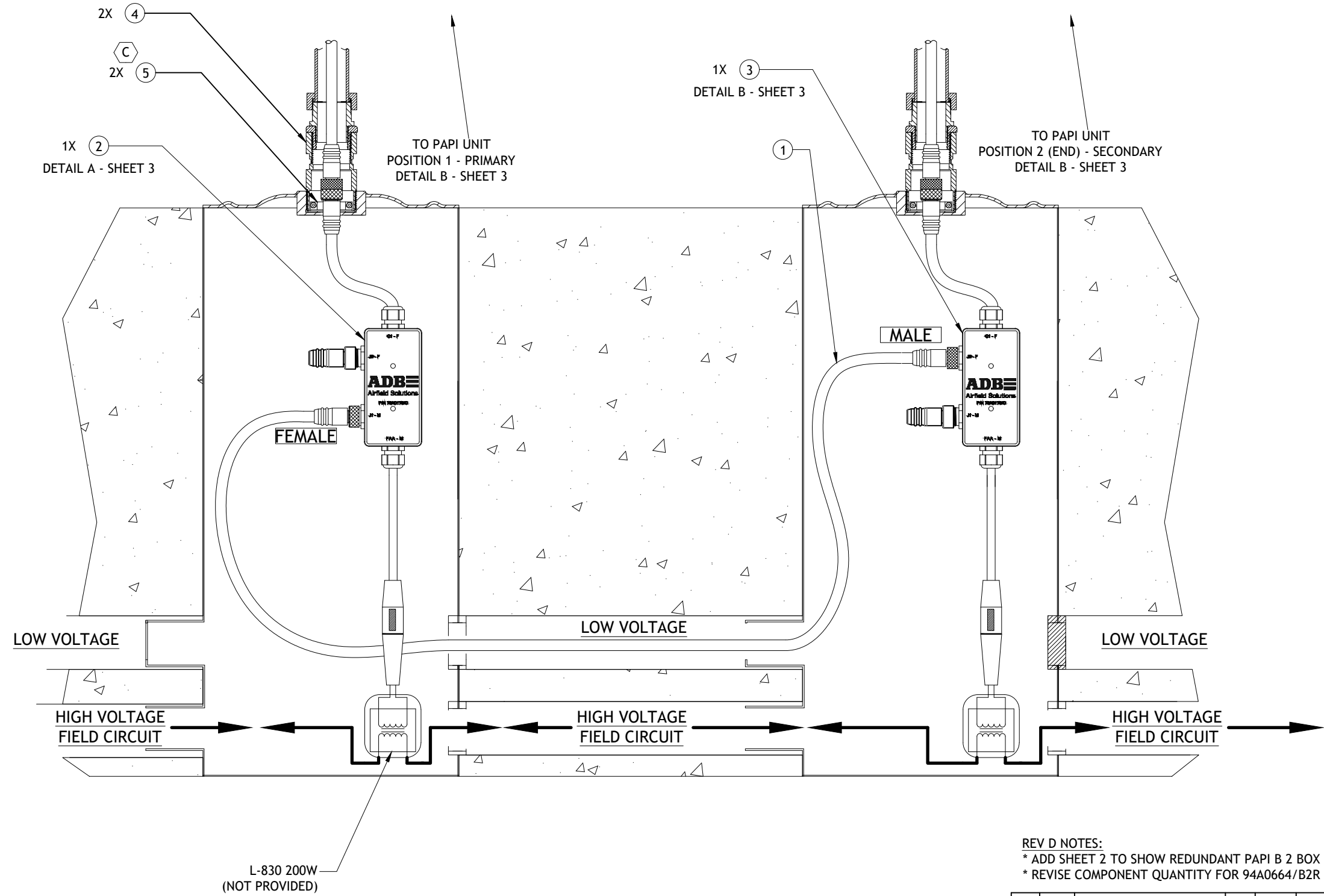


WARNING:  
PLUGS MAY HAVE BEEN LOOSENED  
DURING SHIPPING. AT TIME OF  
INSTALLATION VERIFY THAT PLUGS ARE  
SECURELY FASTENED TO RECEPTACLES.

### 2-BOX CURRENT DRIVEN FIELD INSTALLATION (NON-REDUNDANT SHOWN)



REV D NOTES:  
\* ADD SHEET 2 TO SHOW REDUNDANT PAPI B 2 BOX INSTALLATION.  
\* REVISE COMPONENT QUANTITY FOR 94A0664/B2R CONFIGURATION.

**NOTES:**

1. ALL EXTERNAL CABLES ARE PROVIDED IN ADB KIT # 94A0664/B2 AND /B2R (REDUNDANT).
2. THE 94A0664/B2R KIT CONTAINS (4) 63A0563 CABLE CLAMPS. ONLY (2) ARE REQUIRED IF THE REDUNDANT ISOLATION TRANSFORMERS ARE PROVIDED WITH STYLE 8 SECONDARY.
3. DURING INSTALLATION OF CABLE SYSTEM, LEAVE CAPS IN PLACE TO PROTECT CONNECTORS/RECEPTACLES. REMOVE CAPS ONLY WHEN MAKING FINAL CONNECTIONS. PLUGS ARE PRE-INSTALLED ON 73A0179/CX AND ARE NOT TO BE REMOVED.
4. DO NOT REMOVE THE CAPS ON THE UNUSED JUNCTION BOX RECEPTACLES. ENSURE CAPS OF UNUSED RECEPTACLES ARE SECURELY FASTENED.
5. FOR CORRECT PAPI UNIT POSITIONS AS ASSOCIATED TO THE RUNWAY, LOCATE UNITS PER ADB DOCUMENT # 117A0078 SHEET 3.
6. SEE SHEET 3 FOR PAPI UNIT TO EARTH GROUND CONNECTION.
7. REFERENCE ADB DOCUMENT # 43A4165/XXXX FOR INTERNAL WIRING OF PAPI UNITS.

94A0664/B2X : LED PAPI L-881 STYLE B EXTERNAL CABLE KIT (2-BOX CURRENT DRIVEN) - NOTE 2

ITEM NO.	PART NUMBER	DESCRIPTION	/B2	/B2R
1	73A0178/40	REMKE MINI-LINK 40FT 6P FEMALE/MALE-INT 16/6 STOW W/ SCREW CAP	1	1
2	73A0179/C1	LED PAPI STYLE B (CURRENT DRIVEN) JUNCTION BOX W/MALE PLUG	1	1
3	73A0179/C2	LED PAPI STYLE B (CURRENT DRIVEN) JUNCTION BOX W/FEMALE PLUG	1	1
4	62A0711	FRANGIBLE COUPLING 2-11.5 NPT L-880/L-881	2	4
5	63A0563	CABLE CLAMP 961-X	2	4

(D)  
(D)  
(D)

**CONTROLLED COPY**

Unauthorized duplication of this document in whole or part is prohibited. Initialed in RED ink below indicates authorized copy.

INITIAL & DATE:



P.O. Box 30829 Tel: (614) 861-1304  
977 Gahanna Parkway Fax: (614) 864-2069  
Columbus, OH 43230

DRAWING TITLE:  
LED PAPI L-881 STYLE B  
(2-BOX CURRENT DRIVEN SYSTEM)  
INSTALLATION OF FIELD CABLING

REV	ECO	NUMBER	REVISION DESCRIPTION	DRAWN BY	REV DATE
D	INC-421	SEE REV D NOTES	DLR	05JUN20	
C	INC-268	ADDITION OF POSITION 1 & 2 BOXES	SFS	19JUL19	
B	4274	ADD REDUNDANT CONFIGURATION	DLR	31AUG17	
A-01	----	INITIAL RELEASE	WH	20MAR14	

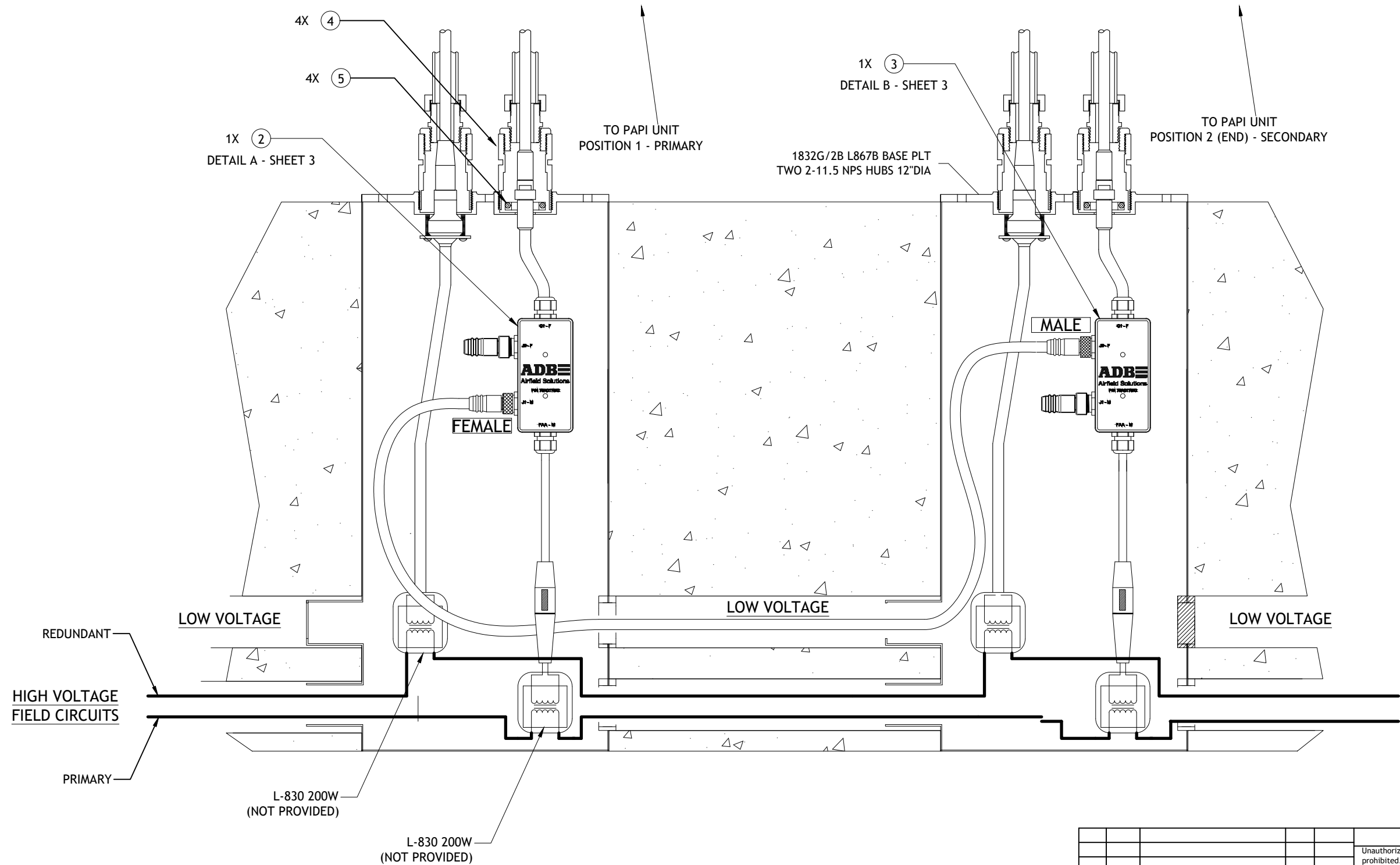
ASSOCIATED DRAWINGS:  
94A0664/X 117A0078 43A4165/XXXX  
DRAWN BY: WHALLAM  
DRAWN DATE: 19 FEB 2014  
Information contained on this drawing is to be used expressly in accord with purpose for which it was submitted. Any disclosure of this information is strictly prohibited except as ADB Airfield Solutions, Inc. may otherwise agree in writing.  
Copyright © 2011 ADB Airfield Solutions.

SCALE: N/A SHEET NUMBER: 1 OF 3

DRAWING NUMBER:  
**117A0085**

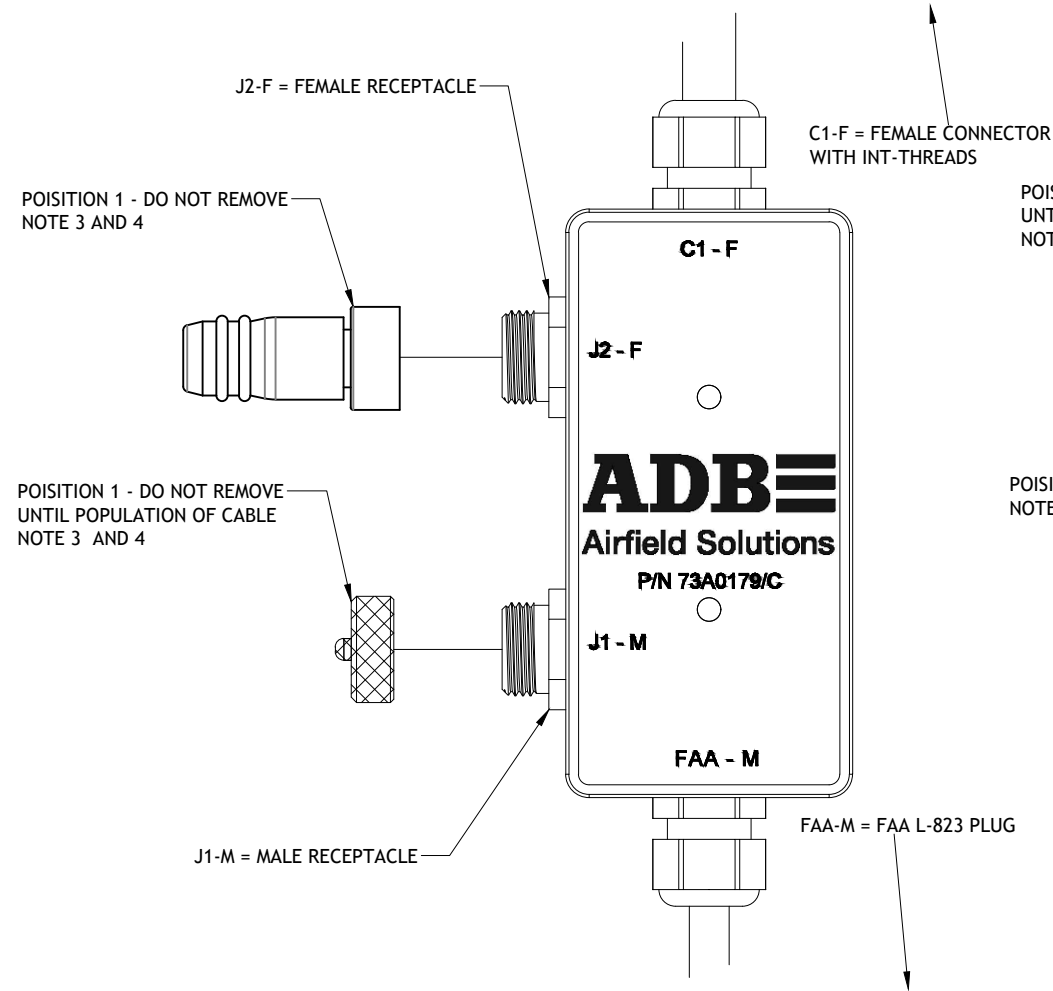
REV. **D**

## 2-BOX CURRENT DRIVEN FIELD INSTALLATION (REDUNDANT SHOWN)

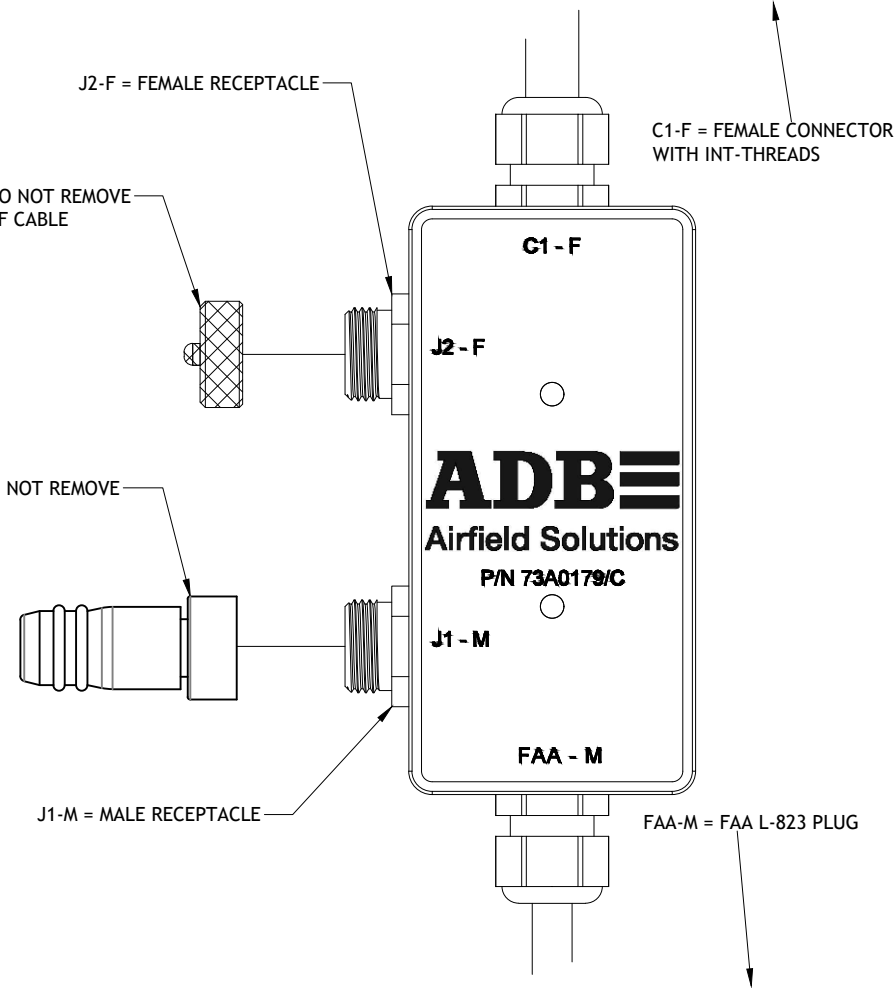


CONTROLLED COPY				
Unauthorized duplication of this document in whole or part is prohibited. Initialed in RED ink below indicates authorized copy.				
INITIAL & DATE:				
P.O. Box 30829      Tel: (614) 861-1304 977 Gahanna Parkway      Fax: (614) 864-2069 Columbus, OH 43230				
DRAWING TITLE: LED PAPI L-881 STYLE B (2-BOX CURRENT DRIVEN SYSTEM) INSTALLATION OF FIELD CABLING				
D	INC-421	SEE REV D NOTES	DLR	05MAR20
C	INC-268	ADDITION OF POSITION 1 & 2 BOXES	SFS	19JUL19
B	4274	ADD REDUNDANT CONFIGURATION	DLR	31AUG17
A-01	----	INITIAL RELEASE	WH	20MAR14
REV LEVEL	ECO NUMBER	REVISION DESCRIPTION	DRAWN BY	REV DATE
ASSOCIATED DRAWINGS: 94A0664/X 117A0078 43A4165/XXXX		DRAWN BY: WHALLAM	DRAWN DATE: 19 FEB 2014	
Information contained on this drawing is to be used expressly in accord with purpose for which it was submitted. Any disclosure of this information is strictly prohibited except as ADB Airfield Solutions, Inc. may otherwise agree in writing. Copyright © 2011 ADB Airfield Solutions.				
SCALE: N/A			SHEET NUMBER: 2 OF 3	
DRAWING NUMBER: <b>117A0085</b>				REV. <b>D</b>

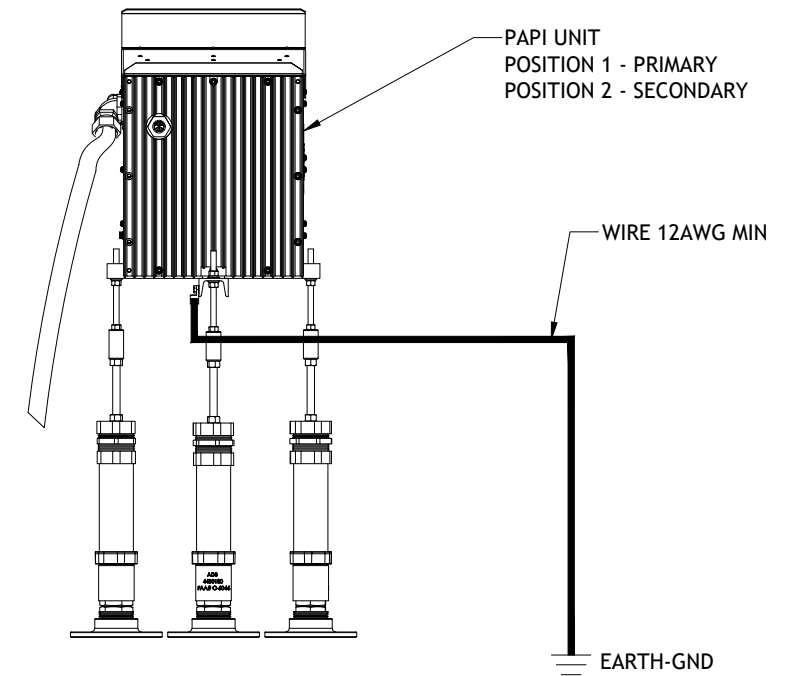
DETAIL A - 73A0179/C1: JUNCTION BOX



DETAIL B - 73A0179/C2: JUNCTION BOX



PRIMARY OR SECONDARY UNIT EARTH GROUND CONNECTION



CONTROLLED COPY			
Unauthorized duplication of this document in whole or part is prohibited. Initialed in RED ink below indicates authorized copy.			
INITIAL & DATE:			
<b>ADB SAFEGATE</b>			
P.O. Box 30829		Tel: (614) 861-1304	
977 Gahanna Parkway		Fax: (614) 864-2069	
Columbus, OH 43230			
DRAWING TITLE: LED PAPI L-881 STYLE B (2-BOX CURRENT DRIVEN SYSTEM) INSTALLATION OF FIELD CABLING			
D	INC-421	SEE REV D NOTES	DLR 05JUN20
C	INC-268	ADDITION OF POSITION 1 & 2 BOXES	SFS 19JUL19
B	4274	ADD REDUNDANT CONFIGURATION	DLR 31AUG17
A-01	----	INITIAL RELEASE	WH 20MAR14
REV LEVEL	ECO NUMBER	REVISION DESCRIPTION	DRAWN BY REV DATE
ASSOCIATED DRAWINGS: 94A0664/X 117A0078 43A4165/XXXX		DRAWN BY: WHALLAM	DRAWN DATE: 19 FEB 2014
Information contained on this drawing is to be used expressly in accord with purpose for which it was submitted. Any disclosure of this information is strictly prohibited except as ADB Airfield Solutions, Inc. may otherwise agree in writing. Copyright © 2011 ADB Airfield Solutions.			
SCALE: N/A		SHEET NUMBER: 3 OF 3	
DRAWING NUMBER: <b>117A0085</b>			REV. <b>D</b>