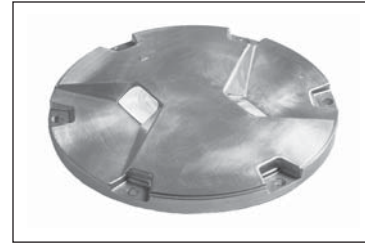


L-850A

Color	FAA Avg. Intensity (cd)	Performance		
		Peak Intensity (cd)	Average Intensity (cd)	Beam Spread
L-850A - 48W				
White	5,000	10,637	8,170-H 7,557-V	-5 to 5°-H 0.2 to 9°-V
Red	750	1,613	1,252-H 1,175-V	-5 to 5°-H 0.2 to 9°-V

V = Vertical H = Horizontal



L-850A

L-850B

Color	FAA Avg. Intensity (cd)	Performance		
		Peak Intensity (cd)	Average Intensity (cd)	Beam Spread
L-850B - 48W				
White	5,000	11,010	7,544-H 8,155-V	-1 to 9°-H 2 to 9°-V
MALSR Approach - 105W (FAA-E-2968)				
White	10,000	13,797	11,550-H 11,344-V	-1 to 9°-H 2 to 9°-V

V = Vertical H = Horizontal

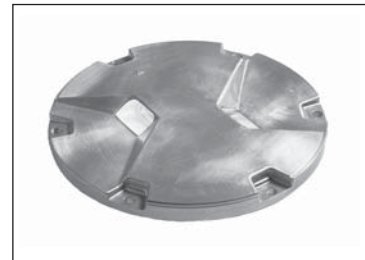


L-850B/MALSR (white)

L-850C

Color	FAA Avg. Intensity (cd)	Performance		
		Peak Intensity (cd)	Average Intensity (cd)	Beam Spread
L-850C - 105W				
White	10,000	15,798	11,730-H 12,109-V	-2 to 9°-H 0.2 to 7°-V
Yellow	5,000	9,701	6,971-H 7,357-V	-2 to 9°-H 0.2 to 7°-V

V = Vertical H = Horizontal



L-850C

L-850D Military

Lamps - Runway End: One 105W - 6.6A cold mirror prefocus halogen, 1,000 hours rated life at full intensity

Color	FAA Avg. Intensity (cd)	Performance		
		Peak Intensity (cd)	Average Intensity (cd)	Beam Spread
L-850D - 105W - Runway End				
Red	2,500	3,068	2,585-H 2,562-V	-6 to 6°-H 0.2 to 4.7°-V

Lamps - Threshold/End: Three 105W - 6.6A cold mirror prefocus halogen (one red, two green), 1,000 hours rated life at full intensity

Color	FAA Avg. Intensity (cd)	Performance		
		Peak Intensity (cd)	Average Intensity (cd)	Beam Spread
L-850D - 105W - Threshold/End				
Green*	3,300	12,947	11,157-H 10,804-V	-2 to 9°-H 1 to 10°-V
Red	2,500	3,068	2,585-H 2,562-V	-6 to 6°-H 0.2 to 4.7°-V

V = Vertical H = Horizontal

* Photometric data shown is with two 105W lamps.

L-850D FAA

Lamps - Runway End: One 62W - 6.6A cold mirror prefocus halogen, 1,000 hours rated life at full intensity

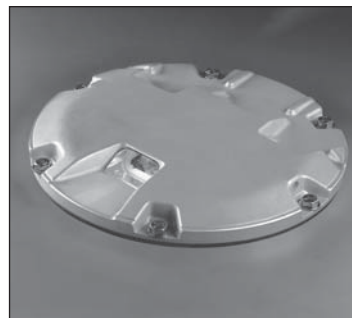
Color	FAA Avg. Intensity (cd)	Performance		
		Peak Intensity (cd)	Average Intensity (cd)	Beam Spread
L-850D - 105W - Runway End				
Green	3,300	4,851	3,492-H 3,912-V	-2 to 9°-H 1 to 10°-V

Lamps - Threshold/End: Three 62W - 6.6A cold mirror prefocus halogen (two red, one green), 1,000 hours rated life at full intensity

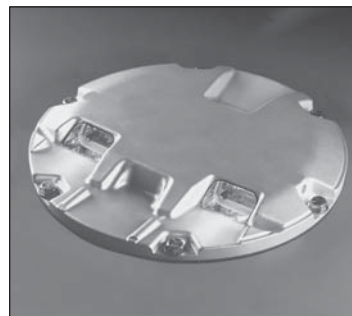
Color	FAA Avg. Intensity (cd)	Performance		
		Peak Intensity (cd)	Average Intensity (cd)	Beam Spread
L-850D - 105W - Threshold/End				
Red*	2,500	3,987	3,004-H 3,590-V	-6 to 6°-H 0.2 to 4.7°-V
Green	3,300	4,851	3,492-H 3,912-V	-2 to 9°-H 1 to 10°-V

V = Vertical H = Horizontal

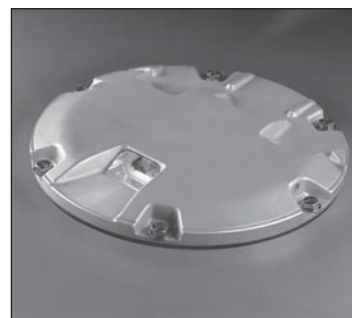
* Photometric data shown is with two 62W lamps.



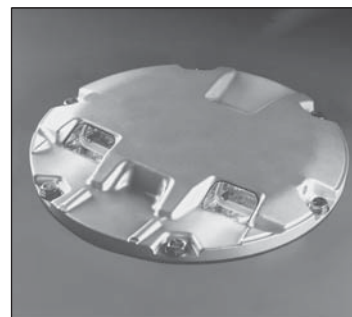
Runway End Light



Runway Threshold/End Light



Runway Threshold Light



Runway Threshold/End Light

L-850E

Lamps: Two 105W - 6.6A cold mirror prefocus halogen, 1,000 hours rated life at full intensity

Color	FAA Min. Intensity (cd)	Performance		
		Peak Intensity (cd)	Minimum Intensity (cd)	Beam Spread

L-850E - High-Intensity Threshold Applications

Green	5,000	13,100	7,110	-6 to 6°-H 1 to 9°-V
-------	-------	--------	-------	-------------------------

Color	AFMAN(I) 32-1187 Avg. Int. (cd)	Performance		
		Peak Intensity (cd)	Average Intensity (cd)	Beam Spread

Military Approach Applications

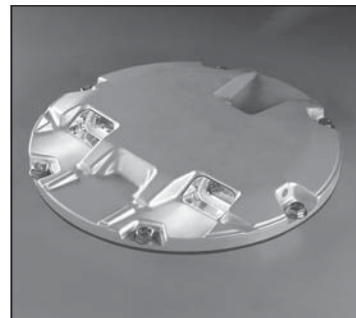
White	20,000	27,890	20,271	-7 to 7°-H 1 to 11°-V
-------	--------	--------	--------	--------------------------

Red	5,000	6,746	5,098	-7 to 7°-H 1 to 11°-V
-----	-------	-------	-------	--------------------------

Military Threshold Applications

Green	10,000	18,875	13,930	-5.5 to 5.5°-H 0 to 9°-V
-------	--------	--------	--------	-----------------------------

V = Vertical H = Horizontal



L-850E

L-850F

Color	FAA Avg. Intensity (cd)	Performance		
		Peak Intensity (cd)	Average Intensity (cd)	Beam Spread

L-850F - 48W

White	5,000	8,246	6,248-H 5,628-V	-5 to 5°-H 0.2 to 9°-V
-------	-------	-------	--------------------	---------------------------

H = Horizontal V = Vertical



L-850F

ALSF/MALSR Approach Light

ALSF Runway Approach (FAA-E-2952)

Lamps: Three 105W - 6.6A cold mirror prefocused halogen, 1,000 hours rated at full intensity.

Color	E-2952 Spec Avg.	Performance		
		Peak Intensity (cd)	Average Intensity (cd)	Beam Spread

White (Style A)	12,000	18,300	14,995-H 14,910-V	-15 to 15°-H 2 to 12°-V
-----------------	--------	--------	----------------------	----------------------------

Green (Style B)	10,000	18,999	18,315-H 18,696-V	-2 to 2°-H 2.5 to 5°-V
-----------------	--------	--------	----------------------	---------------------------

Red (Style C)	6,000	10,084	9,265-H 9,531-V	-2 to 2°-H 2.5 to 5°-V
---------------	-------	--------	--------------------	---------------------------

MALSR Threshold (FAA-E-2968)

Lamps: Three 62W-6.6A cold mirror prefocused halogen, 1,000 hours rated at full intensity.

Color	E-2968 Spec Min.	Performance		
		Peak Intensity (cd)	Minimum Intensity (cd)	Beam Spread

Green	8,000	10,420	8,241	-6 to +6°-H 1 to 9°-V
-------	-------	--------	-------	--------------------------

V = Vertical H = Horizontal



ALSF/MALSR

ALSF/MALSR Approach Light

ALSF Runway Approach (FAA-E-2952)

Lamps: Three 105W - 6.6A cold mirror prefocused halogen, 1,000 hours rated at full intensity.

Color	E-2952 Spec Avg.	Performance		
		Peak Intensity (cd)	Average Intensity (cd)	Beam Spread
White (Style A)	12,000	18,300	14,995-H 14,910-V	-15 to 15°-H 2 to 12°-V
Green (Style B)	10,000	18,999	18,315-H 18,696-V	-2 to 2°-H 2.5 to 5°-V
Red (Style C)	6,000	10,084	9,265-H 9,531-V	-2 to 2°-H 2.5 to 5°-V

MALSR Threshold (FAA-E-2968)

Lamps: Three 62W-6.6A cold mirror prefocused halogen, 1,000 hours rated at full intensity.

Color	E-2968 Spec Min.	Performance		
		Peak Intensity (cd)	Minimum Intensity (cd)	Beam Spread
Green	8,000	10,420	8,241	-6 to +6°-H 1 to 9°-V

V = Vertical H = Horizontal

High Intensity Style 2 ICAO/Military Approach Light

Lamps: Three 105W - 6.6A cold mirror prefocused halogen, 1,000 hours rated life at full intensity.

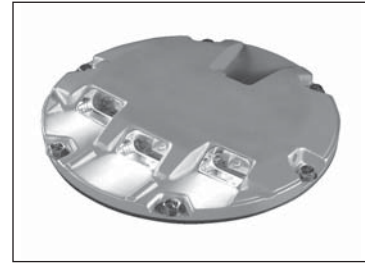
Approach Centerline and Cross Bar - ICAO

Color	Distance	Performance		
		Peak Intensity (cd)	Average Intensity (cd)	Beam Spread
White	0 to 475 m	32,493	22,940	-10 to 10°-H 0 to 11.5°-V
White	beyond 475 m	-	21,600	-10 to 10°-H 1.5 to 13.5°-V

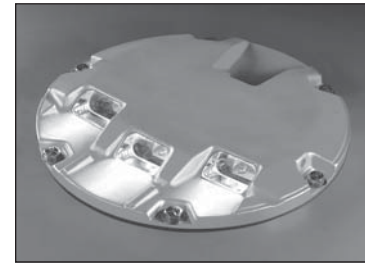
Approach Side-row - ICAO

Color	Distance	Performance		
		Peak Intensity (cd)	Average Intensity (cd)	Beam Spread
Red	-	7,970	6,260	-5 to 9°-H 0.5 to 11.5°-V

V = Vertical H = Horizontal



ALSF/MALSR



High Intensity ICAO/Military
Approach Light

L-852A-D

Color	FAA Avg. Intensity (cd)	Performance		
		Peak Intensity (cd)	Average Intensity (cd)	Beam Spread
L-852A - 30 Watt				
Yellow	20	832	664-H 678-V	-10 to 10°-H 1 to 4°-V
Green	20	529	438-H 435-V	-10 to 10°-H 1 to 4°-V
L-852B - 30 Watt				
Yellow	20	318	179-O	-30 to 30°-H 1 to 4°-V
Green	20	189	110-O	-30 to 30°-H 1 to 4°-V
L-852C - 30 Watt				
Yellow	200	929	851-H 785-V	-3.5 to 3.5°-H 1 to 8°-V
Green	200	567	532-H 494-V	-3.5 to 3.5°-H 1 to 8°-V
L-852D - 30 Watt				
Yellow	100	318	210-O	-30- to 30°-H 1 to 10°-V
Green	100	189	124-O	-30 to 30°-H 1 to 10°-V
L-852A - 48 Watt				
Yellow	20	1,715	1,074-H 1,105-V	-10 to 10°-H 1 to 4°-V
Green	20	1,168	796-H 803-V	-10 to 10°-H 1 to 4°-V
L-852B - 48 Watt				
Yellow	20	632	313-O	-30 to 30°-H 1 to 4°-V
Green	20	401	190-O	-30 to 30°-H 1 to 4°-V
L-852C - 48 Watt				
Yellow	200	2,168	1,895-H 1,410-V	-3.5 to 3.5°-H 1 to 8°-V
Green	200	1,288	1,250-H 999-V	-3.5 to 3.5°-H 1 to 8°-V
L-852D - 48 Watt				
Yellow	100	632	313-O	-30 to 30°-H 1 to 10°-V
Green	100	401	190-O	-30 to 30°-H 1 to 10°-V

V = Vertical H = Horizontal O = Overall



L-852A-D

L-852A/C

Color	FAA Avg. Intensity (cd)	Performance		
		Peak Intensity (cd)	Average Intensity (cd)	Beam Spread
L-852A - 45W				
Yellow	20	220	191-H 182-V	-10 to 10°-H 1 to 4°-V
Green	20	133	115-H 115-V	-10 to 10°-H 1 to 4°-V
L-852C - 45W				
Yellow	200	583	553-H 476-V	-3.5 to 3.5°-H 1 to 8°-V
Green	200	298	268-H 232-V	-3.5 to 3.5°-H 1 to 8°-V

V = Vertical H = Horizontal



L-852A/C

L-852E/F

Color	FAA Avg. Intensity (cd)	Performance		
		Peak Intensity (cd)	Average Intensity (cd)	Beam Spread
L-852E - 45W				
Yellow	50	194	90	360°-H 1 to 8°-V
L-852F - 120W				
Yellow	200	447	430	360°-H 1 to 10°-V

V = Vertical H = Horizontal

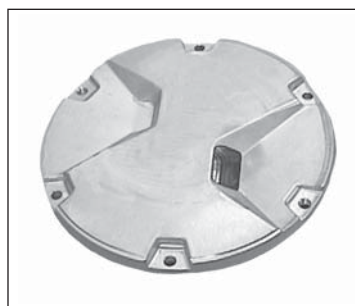


L-852E/F

L-852G

Color	FAA Avg. Intensity (cd)	Performance		
		Peak Intensity (cd)	Average Intensity (cd)	Beam Spread
L-852G - 105W				
Traffic Signal Yellow	1,000	1,740	1,216-O	-24 to 24°-H 1 to 10°-V

V = Vertical H = Horizontal O = Overall

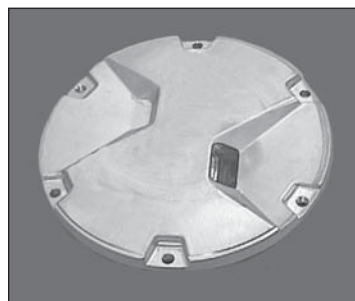


L-852G

L-852S

Color	FAA Avg. Intensity (cd)	Performance		
		Peak Intensity (cd)	Main Beam (cd)	Beam Spread
L-852S - 105W				
Traffic Signal Red	300	510	333	-24 to +24°-H 1 to +10°-V

V = Vertical H = Horizontal

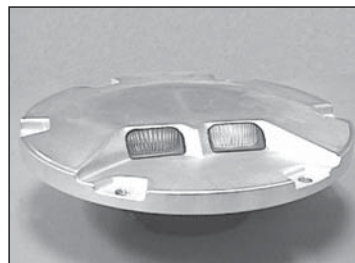


L-852S

L-852G/S

Color	FAA Avg. Intensity (cd)	Performance		
		Peak Intensity (cd)	Average Intensity (cd)	Beam Spread
L-852S - 105W				
Red	300	386	305-O	-24 to +24°-H 1 to +10°-V
L-852G - 105W				
Yellow	1,000	1,740	1,216-O	-24 to +24°-H 1 to +10°-V

V = Vertical H = Horizontal O = Overall



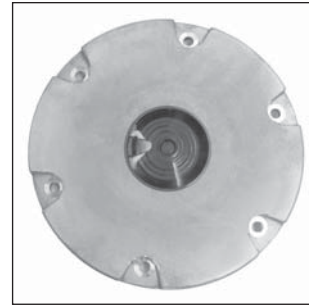
L-852G/S

L-852T

Lamp: 45W – PKX30d prefocus halogen lamp with nominal life of 1,000 hours.

Color	FAA Avg. Intensity (cd)	Performance		
		Peak Intensity (cd)	Average Intensity (cd)	Beam Spread
L-852T - 45W				
Blue	2	4.8	3.5	360°-H 1-6°-V

V = Vertical H = Horizontal



L-852T

ADB Airfield Solutions, LLC
977 Gahanna Parkway
Columbus, OH 43230 USA

ADB Airfield Solutions
Leuvensesteenweg 585
B-1930 Zaventem
Belgium

Tel: +1 614-861-1304
Fax: +1 614-864-2069
www.adb-airfieldsolutions.com

Tel: +32 (2) 722.17.11
Fax: +32 (2) 722.17.64

The information contained in this document is subject to change without notice. ADB reserves the right to make changes and improvements to its products and assumes no responsibility for making these modifications on any equipment previously sold.