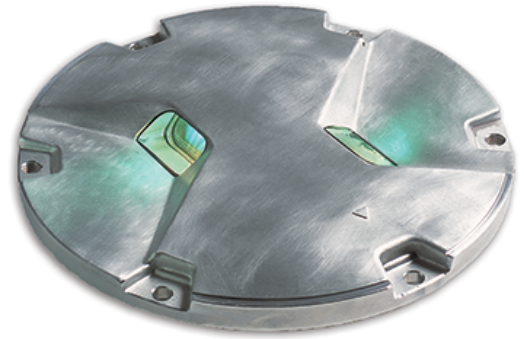


TAXIWAY LIGHTING

TCL-DL

Incandescent In-pavement Taxiway
Centerline Light

STYLE 3, MEDIUM-INTENSITY, DUAL-LAMP



Compliance with Standards

FAA: L-852 series AC 150/5345-46 (Current Edition). ETL Certified.

Uses

FAA L-852A

- Taxiway centerline on straight sections and clearance bar in category I and II applications

FAA L-852B

- Taxiway centerline on curved sections in category I and II applications

FAA L-852C

- Taxiway centerline on straight section and clearance bar in category III applications

FAA L-852D

- Taxiway centerline on curved sections in category III applications
- White/white or white/yellow used on MIRL runway edge for intersections where runway edge spacing >400 ft (122 m)

Use of two lamps allows the option of separate control of each lamp.

Features

- Designed and built with simplicity and ease of maintenance in mind
- Light channel in front of prism windows protects prisms from damage and prevents rubber buildup thereby maintaining optimal light output
- Low-energy/long-life halogen lamps are 30 W with a rated life of 1,500 hours at 6.6 A and in excess of 6,000 hours in practical use
- Low-temperature lights. Temperature rise at center of top cover remains below FAA-specified limit of 320 °F (160 °C).
- Aluminum alloy cover and inner cover, stainless steel hardware, and aluminum alloy and stainless steel optical assembly
- Includes a UL 467 rated ground lug, which accepts an AWG 6 earth ground wire

Ordering Code

44A476X - X X X X

Series

- 4 = L-852A¹ & L-852C
- 5 = L-852B¹ & L-852D

Filter Color

- 1 = Yellow/Yellow (ETL Certified)
- 2 = Green/Green (ETL Certified)
- 3 = Yellow/Green (ETL Certified)
- 4 = Red/Red²
- 5 = Green/Obscured (ETL Certified)
- 6 = Yellow/Obscured (ETL Certified)
- 7 = Red/Obscured²
- 8 = Green/Red²
- 9 = Yellow/Red²
- 0 = White/White (ETL Certified)
- A = White/Yellow (ETL Certified)
- B = White/Green^{2,3}
- C = White/Red^{2,3}

Film Disc Cutout

- 1 = Included
- 2 = Not Included

Base Mounting

- 1 = Two L-823 cord sets for L-868 Size B standard base
- 3 = One L-823 cord set for L-868 Size B standard base
- 5 = One L-823 cord set for 10-inch diameter base¹
- 6 = Two L-823 cord sets for 10-inch diameter base¹
- 7 = One cord set, two piece, for L-868 Size B standard base³

Lamp

- 2 = 1 lamp, 30 W/6.6 A for unidirectional application or
2 lamps, 30 W/6.6 A for bidirectional application

Notes

- ¹ Not ETL Certified.
- ² Color configuration not recognized by the FAA .
- ³ Only available on L-852B and L-852D fixtures.

Packaging

- In cardboard box: 7 × 13 × 13 in (17.8 × 33 × 33 cm)
- Weight with packing: 15.3 lb (6.94 kg)
- Weight without packing: 12.3 lb (5.58 kg)

www.adbsafegate.com

Product specifications may be subject to change, and specifications listed here are not binding. Confirm current specifications at time of order.