



Field Installation of Back-up Lamps L-858 Signature Series Sign

Document No. ALN114

Issued: April 22, 2005

Rev. A: April 22, 2005

ADB Airfield Solutions

P.O. Box 30829
977 Gahanna Parkway
Columbus, OH 43230

Tel: (614) 861-1304
Fax: (614) 864-2069

Copyright © 2005 by ADB Airfield Solutions, LLC All rights reserved.

ADB Airfield Solutions

*The innovative
approach™*

Installation of Back-up Lamp Option

1. Introduction

This service bulletin provides instructions for installing back-up lamps in the Siemens Airfield Solutions, Signature Series Signs. A second, back-up, lamp can be added to each of the existing lamp mounting brackets installed in each of the sign modules.

Back-up Lamp Kit, 94A0438-XX includes necessary lamps, terminal blocks, lamp clip, pop rivets, and wiring harnesses. See Table 2 for kit dash numbers and descriptions. Kits are for Style 2 or 3 only.

2. Tools and Equipment Required

Refer to Table 1 for the special tools and equipment required to install the back-up lamp kit.

Table 1. Required Tools/Equipment Not Supplied

Description	Quantity
Assorted Hex sockets and a ratchet	A/R
Pop Rivet Tool (manual or air operated) for 1/8 dia. rivets	A/R
Sign Instruction Manual 96A0286	
Wire Ties	A/R

Table 2. Required Tools/Equipment Supplied

Part Number	Description	Quantity
ALN113	Service Bulletin	1
94A0438-XX	Back-up Lamp Kits	
94A0438-11	Size 1/1 Module	A/R
94A0438-12	Size 1/2 Module	A/R
94A0438-13	Size 1/3 Module	A/R
94A0438-14	Size 1/4 Module	A/R
94A0438-21	Size 2/1 Module	A/R
94A0438-22	Size 2/2 Module	A/R
94A0438-23	Size 2/3 Module	A/R
94A0438-24	Size 2/4 Module	A/R
94A0438-31	Size 3/1 Module	A/R
94A0438-32	Size 3/2 Module	A/R
94A0438-33	Size 3/3 Module	A/R
94A0438-34	Size 3/4 Module	A/R
94A0438-31	Size 3/1 Module	A/R
94A0438-32	Size 3/2 Module	A/R
94A0438-33	Size 3/3 Module	A/R
94A0438-34	Size 3/4 Module	A/R
94A0438-41	Size 4/1 Module	A/R

3. Installation Procedure



WARNING: Before installing the back-up lamp kits disconnect power to the field circuit.



WARNING: High voltage is present in the field circuit. Failure to disconnect power may result in personal injury, death, or damage to equipment.

To install the back-up kits, perform the following procedure:

1. Remove the sign lid or lids on the sign that the kit is to be installed.

NOTE: See Figure 1 below to identify the pre-punched holes in the lamp bracket that will be used to mount the back-up lamp terminal block and the lamp clip.

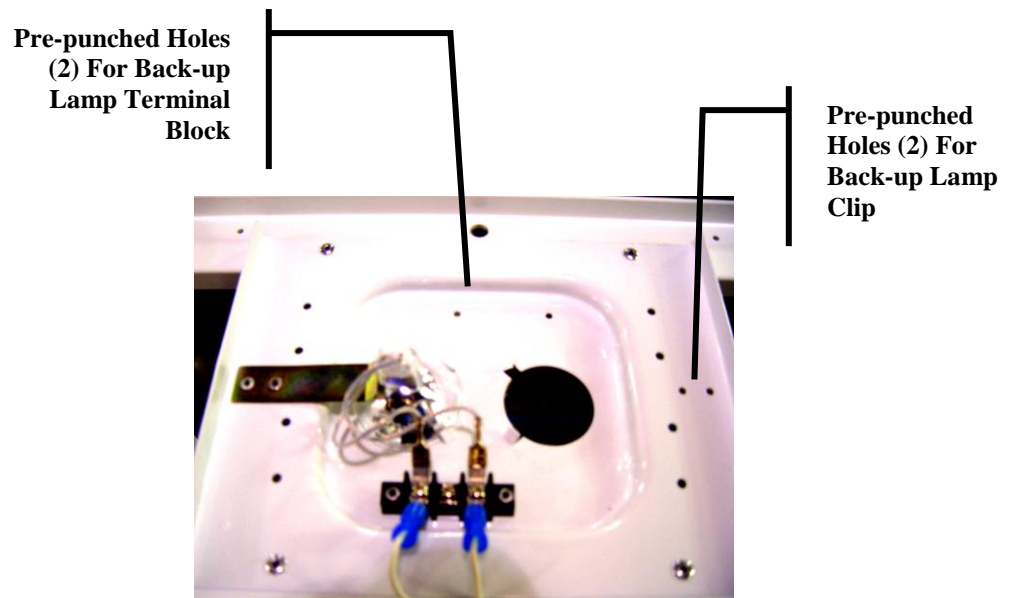


Figure 1

2. Using the two 1/8 dia **short grip** pop-rivets, install the lamp clip. Using the two 1/8 dia **long grip** pop-rivets, install the terminal block. See Figure 2

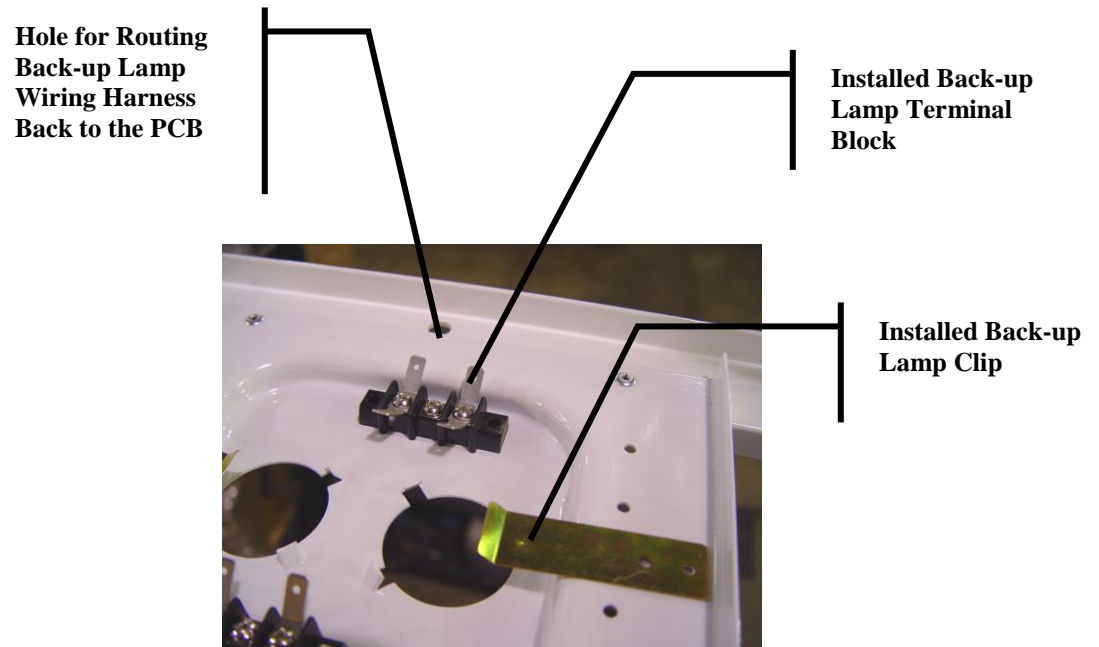


Figure 2

3. After the terminal block and lamp clip have been installed, slip the 48W/MR16 lamp under the lamp clip and connect the lamp leads to the inside set of spade terminals on the terminal block.
4. Find the correct length back-up lamp wiring harness and connect one end to the terminal block and then route the wiring harness down through the wire hole, See Figure 2, back to the Active Ballast - Main Board terminals (LA1, LA2 or LB1, LB2). See schematic for wiring harness hook-up to the Active Ballast Board. Also See Figure 3.
5. Use wire ties to dress the wiring harness against the underside of the sign frame.
6. After wiring has been completed power the sign to verify that lamps are working. Reinstall sign lids.

**Location of LB1 and LB2
Terminals. See wiring
schematic on page 6.**

**Location of LA1 and LA2
Terminals. See wiring
schematic on page 6.**

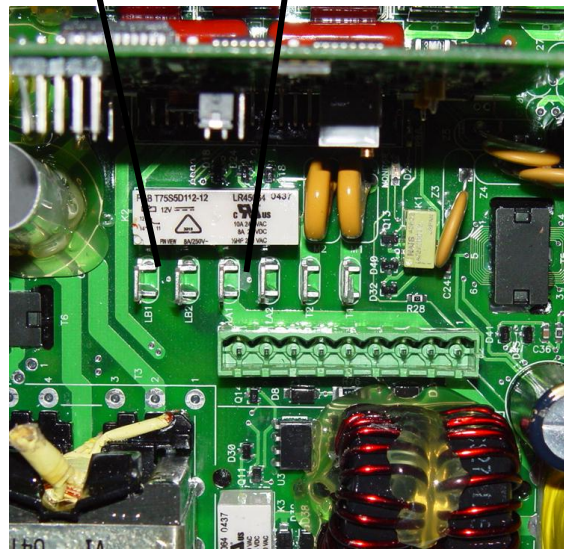


Figure 3

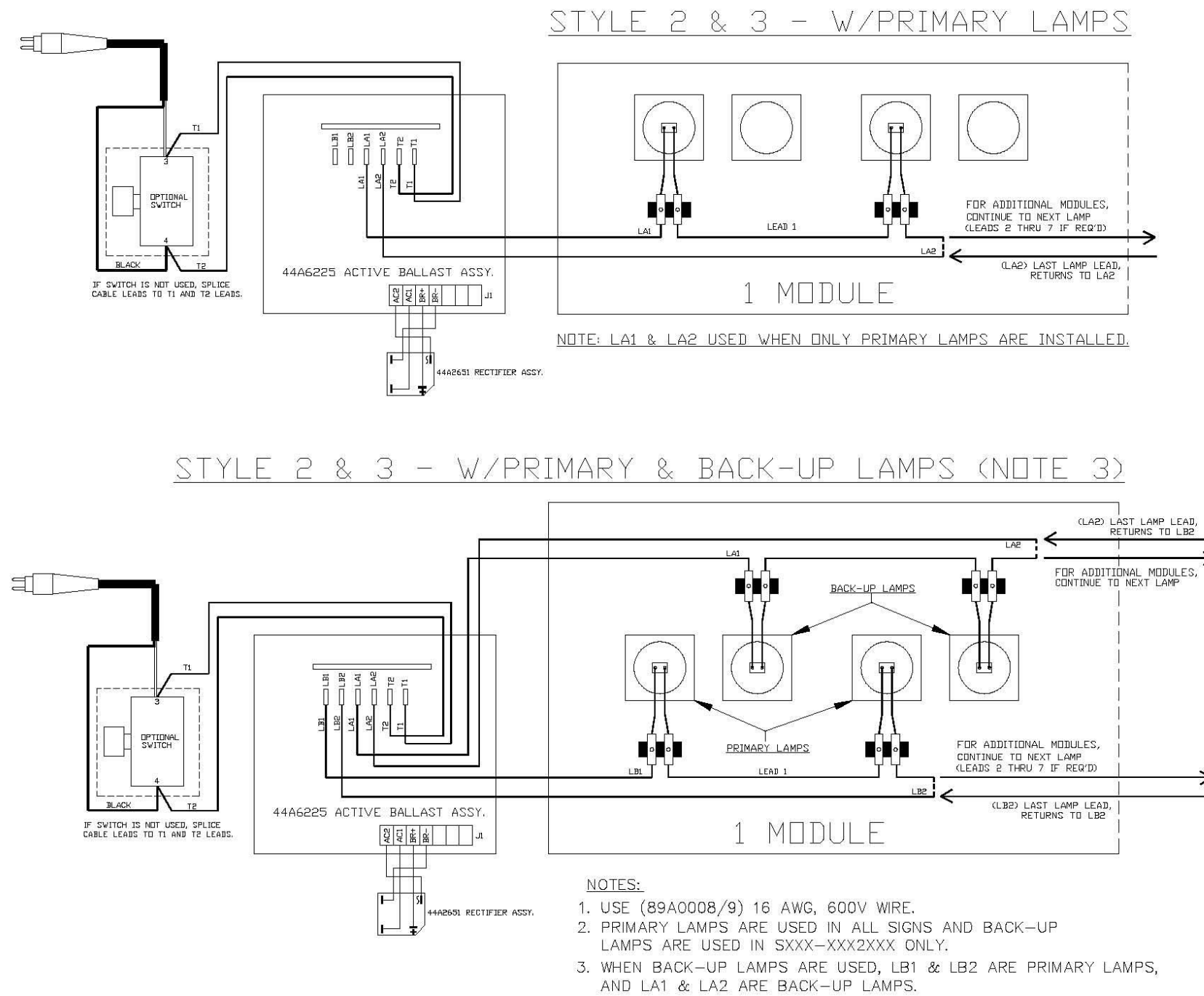


Figure 4 Wiring Schematic