

411 Sof-Tred™

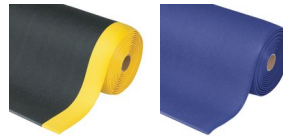
Microcellular vinyl foam with pebble pattern



Ergonomic, Anti-fatigue & Safety Matting - Dry Areas Linear Lengths

411 Sof-Tred™

Basic worker comfort derived from 9.4 mm thick worker platform comprised of a construction of microcellular vinyl consisting of millions of air bubbles that provide basic ergonomic benefit.



- Pebble pattern provides non-directional traction and is easy to clean
- All four sides are bevelled and sealed to minimize tripping hazards

Recommended use

- Dry Areas
- For placement in manufacturing plants, assembly lines, picking, packing and logistics warehouses, individual work stations.
- Light duty

Colors:

- Black
- Blue
- Black/Yellow
- Grey

Sizes:

- 60cm x 91cm
- 91cm x 150cm
- 122cm x linm
- 60cm x linm
- 91cm x linm
- 122cm x 18.3m
- 60cm x 18.3m
- 91cm x 18.3m

WEAR RESISTANCE

SLIP RESISTANCE

ANTI-FATIGUE

Ergonomic, Anti-fatigue & Safety Matting - Dry Areas Linear Lengths Sof-Tred™

General

Brand	Notrax
Category	Dry Areas Linear Lengths
Product Number	411
Product Family	Industrial & Commercial Matting
Product Group	Ergonomic, Anti-fatigue & Safety Matting
Product Name	Sof-Tred™
Recommended use	For placement in manufacturing plants, assembly lines, picking, packing and logistics warehouses, individual work stations.
Shipping Location	Barendrecht 2992SB, The Netherlands, Moselle, MS 39459, United States
Type	Dry Areas - Comfort™
Update trigger	20210310-1301
Usage Intensity	Light duty

Sustainability

REACH	Reach compliant (Registration, Evaluation, Authorization and Restriction of Chemicals).
Reach US	Reach compliant (Registration, Evaluation, Authorization and Restriction of Chemicals).
Rohs US	Rohs compliant (Restriction of Hazardous Substances).
Sustainability	Recyclable material
Warranty	1

Tests

Abrasion Resistance 1000	18.1%
Compression Deflection 1.4	0.4 cm
Compression Deflection 2.8	0.6 cm
Elongation	192%
Fire rating EU	Class 2 according NFPS Safety Code 101
Fire rating US	Pass
Slip Rating	R10
Coefficient Friction Dry	0.79
Surface Flammability	Pass
Tear Strength	11.4 lb

Technical Specifications

Application	Industrial Environments
Backing	Microcellular vinyl
Edges	Bevelled edges on all sides
Material	Microcellular vinyl
Material Group	Vinyl
Process	Foaming

Sof-Tred™ Grey

Art. nr.	Dimension (cm)	Weight (kg)	Height (cm)
411S0323GY	60cm x 91cm	1.2	0.94
411R0348GY	122cm x 18.3m	51	0.94
411C0324GY	60cm x linm	1.4	0.94
411S0335GY	91cm x 150cm	3	0.94
411C0336GY	91cm x linm	2	0.94
411R0336GY	91cm x 18.3m	37	0.94
411R0324GY	60cm x 18.3m	26	0.94
411C0348GY	122cm x linm	2.8	0.94

Sof-Tred™ Blue

Art. nr.	Dimension (cm)	Weight (kg)	Height (cm)
411C0336BU	91cm x linm	2	0.94
411S0323BU	60cm x 91cm	1.2	0.94
411C0324BU	60cm x linm	1.4	0.94
411R0348BU	122cm x 18.3m	51	0.94
411R0324BU	60cm x 18.3m	26	0.94
411R0336BU	91cm x 18.3m	37	0.94
411C0348BU	122cm x linm	2.8	0.94
411S0335BU	91cm x 150cm	3	0.94

Sof-Tred™ Black/Yellow

Art. nr.	Dimension (cm)	Weight (kg)	Height (cm)
411S0323BY	60cm x 91cm	1.2	0.94
411R0348BY	122cm x 18.3m	51	0.94
411C0324BY	60cm x linm	1.4	0.94
411R0324BY	60cm x 18.3m	26	0.94
411C0348BY	122cm x linm	2.8	0.94
411C0336BY	91cm x linm	2	0.94
411S0335BY	91cm x 150cm	3	0.94
411R0336BY	91cm x 18.3m	37	0.94

Sof-Tred™ Black

Art. nr.	Dimension (cm)	Weight (kg)	Height (cm)
411S0323BL	60cm x 91cm	1.2	0.94
411C0336BL	91cm x linm	2	0.94
411C0324BL	60cm x linm	1.4	0.94
411S0335BL	91cm x 150cm	3	0.94
411R0324BL	60cm x 18.3m	26	0.94
411R0336BL	91cm x 18.3m	37	0.94
411C0348BL	122cm x linm	2.8	0.94
411R0348BL	122cm x 18.3m	51	0.94